

# THE STINGER

LONDON WASPS V  
GLOUCESTER RUGBY  
SAT 19TH APRIL 2014 - KO: 15.15

OFFICIAL MATCHDAY  
PROGRAMME  
ISSUE: 15 / £3.00





ON THE LINE

## BARNEY'S COLUMN

# ON THE LINE



I love games against Gloucester. Whatever the circumstances, there's always a special atmosphere at clashes with The Cherry and Whites - and

it's all down to their passionate, vociferous, outrageously one-eyed supporters.

Kingsholm is one of the great rugby venues - famous above all, for The Shed. A heaving mass of pugnaciously partisan humanity which makes many a timorous visitor shudder.

I find The Shed enormously entertaining. A highlight of each season comes when Gloucester concede their first penalty of the game. That outraged, furious, exasperated, bewildered and pained roar of "Noooooooooooo!"

is hilariously priceless.

Perhaps surprisingly, in the county of Vaughan Williams, Holst and Howells, their musical gifts are limited. The time-honoured 'Glawster' chant, using the familiar descending minor third, is hardly inspired - but the West Country burr does give it a hint of menace.

The loyal burghers of Castle Grim have memories which shame the average pachyderm. Unprompted, they can recite long lists of injustices committed against them. They love their



Simon Shaw of Wasps takes on the Gloucester defence during the Heineken Cup Quarter Final match between London Wasps and Gloucester at The Causeway Stadium on April 11, 2004 in High Wycombe. (Photo by David Rogers/Getty Images)





Raphael Ibanez of Wasps dives over to score his second try during the Guinness Premiership match between London Wasps and Gloucester at Adams Park on May 4, 2008 in High Wycombe, England. (Photo by David Rogers/Getty Images)

pantomime villains, and even as you read this, someone in the Forest of Dean could be sticking pins into waxen effigies of Dallaglio, Worsley and other unspeakable Wasps guilty of crimes against Glaws.

Despite all this, they are, beneath their feral exterior, a truly welcoming bunch. Most visiting supporters who brave The Shed report that the banter, while often barbed, is excellent, and the game, whatever the result, usually ends in handshakes and the invitation to a nearby hostelry.

Remember a few seasons back, when The Gay Vampire (aka E. Griffiths, Prince of Darkness) hired a crowd, laid on a coach full of booze for them, dressed them up in those stupid tabards and had them dumped into the middle of The Shed? Highly irresponsible, and it speaks volumes for the home crowd that they didn't give them the kicking they deserved.

He did the same at Welford Road.

There's always been a sense of the wronged outsider about Gloucester fans. Rightly or wrongly, they feel the establishment has never given their team the credit it deserves. They can name many Kingsholm heroes cruelly ignored by national selectors. However, if international sides were crammed full of Gloucester players, the Shed faithful would see it as an evil plot to scupper their Premiership campaign.

Perhaps the perceived injustice which hurts them the most is our last Twickenham meeting, for the first final to decide the Premiership title, in 2002/3. Nigel Melville's men finished top of the league, by a country mile, but Wasps crushed them that day, to be crowned champions. That really hurt them - understandably so. It still does. For Gloucester fans, time is not a great healer.

The website [www.gloucester rugby.net](http://www.gloucester rugby.net) offers an interesting insight into the Shed's view on life. An entertaining mixture of wit, wisdom, hope, despair and anger, it even has its own resident poet, who is anything but McGonagallesque.

It was set up by my good friend Bob Fenton, with whom I've walked many a mile and downed many a pint. After running it (at his own expense) for fifteen years, he's calling it a day at the end of the season. Good luck, Bob - but not until this evening.

With both sides eyeing a European play-off place, this afternoon will be a special occasion. The noisy presence of England's most passionate fans can only make it even more special. (Note to editor: please check whether Saracens have copyrighted the word 'special').



## OPPONENTS

### TODAY'S VISITORS

# GLOUCESTER

GLOUCESTER RUGBY ARRIVE IN THE CAPITAL FOR ROUND 20 OF THE AVIVA PREMIERSHIP READY FOR THEIR SECOND MEETING WITH LONDON WASPS IN A MATTER OF WEEKS.

The season has been a mixed one for the Cherry and Whites. A 16-22 defeat on the opening day to a well-drilled Sale Sharks side was followed by a heavy loss to a ruthless Saracens outfit at Allianz Park in Round Two.

But the first win came in round three, as Northampton Saints were defeated 26-24 in the Kingsholm sunshine, with Billy Twelvetrees knocking over a late penalty to overcome the East Midlanders in one of the most thrilling games of the season. That win was quickly followed up by a win on the road at Newcastle Falcons.

Exeter Chiefs then arrived at Kingsholm, and a disciplined and clinical performance from the Devon club was too much for the hosts in front of a bumper crowd.

Onto European action and, in the first round of the Heineken Cup, Gloucester overcame USA Perpignan 27-22 on a classic European evening at Kingsholm.

They then faced the daunting task of a clash at Thomond Park. Despite a really brave performance, Gloucester went down 10-26 to the European giants, roared on by great travelling support.

Back to back defeats in the autumn to Bath Rugby (13-15) and London Wasps (30-32) coupled with a defeat to Northampton Saints (6-33) in the LV= Cup, made it a tough few weeks.

Wins over Newcastle and a Japanese national side were impressive though and a big confidence boost to the whole squad.

Subsequent narrow defeats to Harlequins (19-27) and Leicester Tigers (17-22) were disappointing but facets of the performances promised much.

An excellent 23-12 win at Murrayfield against Edinburgh as the Heineken Cup returned was a perfect away trip, but the return leg a week later saw a flat performance and the Scots battled to a 10-16 win.

Back to domestic action, back-to-back wins over Worcester (12-6) and London Irish (22-19) during the Festive period gave the Cherry and Whites a huge boost as 2013 drew to a close.

2014 started with a heavy defeat to a clinical Saracens (8-29), but a hugely spirited show against Munster saw the Cherry and Whites go down fighting by 20 points to 7.

Needing a bonus point win in Perpignan to qualify as second in the pool and clinch and Amlin Challenge Cup Quarter Final spot, the Cherry and Whites duly delivered and a five try show in Catalan country saw the team triumph 36-18.

A pair of narrow defeats at Sale and Leicester were tough to take but, back on home turf, an impressive 25-20 win over Harlequins was a great boost heading into a clash at Northampton.

Again it was a case of one step forward and one step back as, well in the game at half time, the league leaders took their chances to win comfortably.

After the two-week break, Gloucester hosted Newcastle Falcons and despite leading 37-7 after an hour, the Falcons ran in four tries in the final quarter to take the gloss off what looked set to be a runaway win.

Back-to-back wins followed, as the Cherry and Whites secured a hugely important 14-13 victory over Exeter Chiefs at Sandy Park, a tough ask on any day.

That was followed by the defeat at Adams Park in the Amlin Challenge Cup quarterfinal against today's opponents.

Last weekend, back to domestic matters, the Cherry and Whites faced Wasps' semifinal opponents Bath, in a controversial West Country derby.

The spiky match went in the favour of the men from the Rec 17-18, as the hosts finished with 11 players.

The new 2014/15 European set-up provides a lifeline onto the top table of European club rugby for both today's clubs.

With seventh place in the Aviva Premiership the goal, a route into the European Champions Cup is possible via a play off with French counterparts.

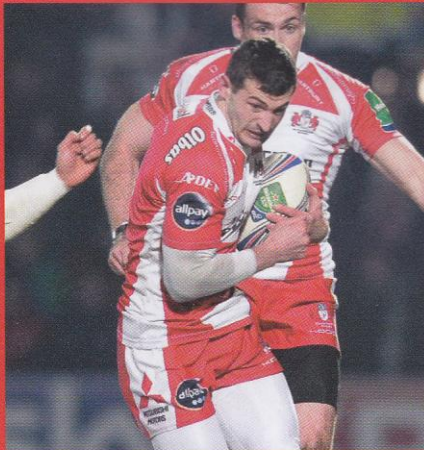
That therefore, puts an extra spice on today's game, with seventh place a realistic prospect for both teams.

With Twickenham the venue for this eagerly anticipated clash, the Cherry and Whites will dust themselves down from last week's disappointment and will aim to acquit themselves as best they can



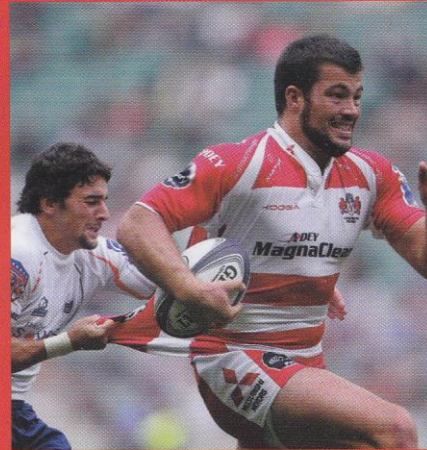
## JONNY MAY

Jonny is now accustomed to the Twickenham environment after making his Six Nations bow for England in the spring, and starring in the wins over Ireland and Wales at HQ. He made his debut on the summer tour of Argentina. The express paced winger started as a centre after developing through the Gloucester Rugby academy alongside playing for Hartpury RFC, but now features more regularly on the flank. The Swindon born flyer isn't perhaps even the fastest player in the Gloucester Rugby squad, although it's a close run thing. However, he is most definitely a player that excites supporters every time he touches the ball.



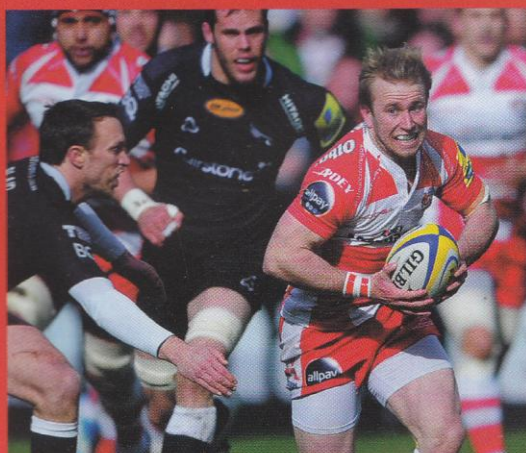
## GARETH EVANS

2013/14 has been a breakthrough season for the Swindon born back rower. After impressing during the club's victorious JP Morgan Premiership Sevens campaign, as well as during the World Club 7s at Twickenham, Evans took his good form onto the fifteen-a-side stage and has been a stand out performer. A try scorer on April 6th against Wasps, Evans is a powerful ball carrier and highly dependable in defence with a staggering turn of pace. Started in the Heineken Cup clashes with Munster and USA Perpignan and is a very highly rated member of the Gloucester squad



## DAN ROBSON

Dan is a young scrum half who has impressed greatly over the past two campaigns with a plethora of dependable and quality displays. With two internationals half-backs to learn from, Robson has been a stand out performer in Cherry and White. Robson showed great form that lead to a call up to the England Saxons squad in January and, despite a recent injury, Robson is hoping to end the season on a high as he targets today's Stinger match as his return to the first team.





STATISTICS

opta

# STAT-ATTACK : LONDON WASPS V GLOUCESTER RUGBY

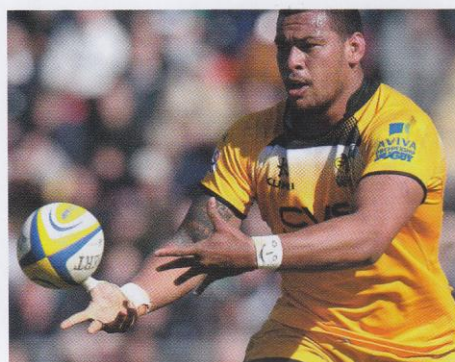
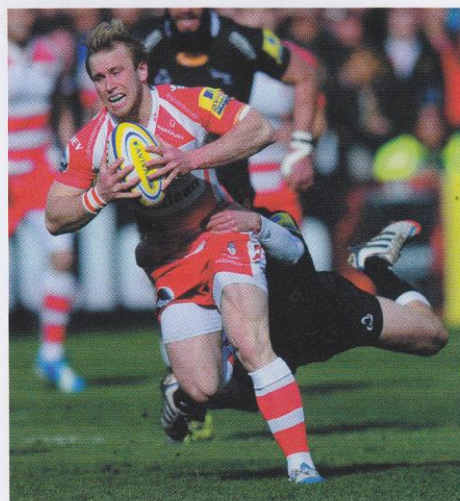
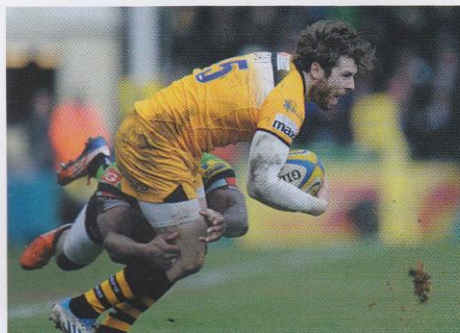
**London Wasps have the best tackle success rate (91%) of any side in the Aviva Premiership this season. Gloucester's tackle success rate is 85%.**

**Rob Cook (1270) is one of just two players to make over 1,000 meters with the ball in hand this season, Elliot Daly is fifth on this ranking with 789 metres.**

**Only Bath and Northampton (both 13) have scored more tries than Wasps (11) this season where the possession originated in their own half.**

**Gloucester have scored five tries from tap penalties this season, no other side has scored more than two in this fashion.**

**Wasps have scored 16 tries in the final 20 minutes of their games this season, only Northampton (20) have crossed for more in this period. Gloucester have conceded the most (18) in this period.**



# London Wasps v Gloucester

Date: 19TH APRIL  
Kick Off: 15:15

**opta**  
we live sport

## Top Performers

### Total Metres

Elliot Daly	789
Ashley Johnson	394
Christian Wade	391

### Total Carries

Ashley Johnson	130
Elliot Daly	113
Nathan Hughes	89

### Total Tackles

James Haskell	162
Sam Jones	133
Joe Launchbury	128

### Lineouts Won

Tom Palmer	54
Kearnan Myall	51
Joe Launchbury	31



Joe Simpson Jimmy Cowan

50	Total Carries	30
232	Total Metres	86
57	Tackles	50
12	Missed Tackles	7
2	Tries Scored	0
5	Clean Breaks	2
6	Defenders Beaten	2
446	Total Passes	404
1	Try Assists	3

## Top Performers

### Total Metres

Rob Cook	1270
Jonny May	626
Henry Trinder	550

### Total Carries

Rob Cook	147
Sione Kalamafoni	141
Billy Twelvetrees	105

### Total Tackles

Matt Kvesic	170
Sione Kalamafoni	108
Ben Morgan	101

### Lineouts Won

Elliot Stooke	46
James Hudson	45
Will James	25

## Team Stats

### Scrum

144	Put Ins	132
123	Won	103
85	% Won	78
33	Pen Won	23
24	Won Opp Feed	18
19	% Opp Feed	15
19	Pen Opp Feed	14

### Lineouts

234	Throw Ins	247
202	Won	217
86	% Won	88
10	Not Straight	9
5	Quick Throw	13
36	Won Opp Throw	34
13	% Stolen	12

### Tries

35	Scored	34
19	No. 1st Phase	17
11	No. Own Half	7
12	No. In 1st Half	14
23	No. In Second Half	20
19	From Set Piece	13
6	From Turnover	7

### Open Play

116	Av. Tackles	90
12	Av. Misses	16
84	Av. Carries	92
291	Av. Metres	366
13	Av. Def Beaten	18
13	Av. T'Overs Con	12
12	Av. Pens Con	13



TEAMS

7-0  
7-7  
10-7  
17-7  
17-10  
17-13  
24-13  
24-16  
—  
31-16  
31-23  
38-23  
38-30



**Director of Rugby:**  
DAI YOUNG

**Matt Mullan**  
**Carlo Festuccia**  
**Jake Cooper-Woolley**  
**Joe Launchbury**  
**Kearnan Myall**  
**Ashley Johnson**  
**James Haskell**  
**Nathan Hughes**  
**Joe Simpson**  
**Andy Goode**  
**Tom Varndell**  
**(C) Chris Bell**  
**Elliot Daly**  
**Will Helu**  
**Andrea Masi**

**Tom Lindsay**  
**Simon McIntyre**  
**Phil Swainston**  
**Tom Palmer**  
**Sam Jones**  
**Charlie Davies**  
**Joe Carlisle**  
**Charlie Hayter**



**Director of Rugby:**  
NIGEL DAVIES

**Nick Wood**  
**Dan George** Edmonds T  
**Rupert Harden** Knicker  
**Elliott Stooke**  
**Will James** Hudson  
**Sione Kalamafoni**  
**Matt Kvesic**  
**Ben Morgan**  
**Jimmy Cowan**  
**Billy Twelvetrees (C)** Burns T  
**Jonny May** T  
**Mike Tindall**  
**Henry Trinder** C? PPCC  
**Charlie Sharples**  
**Rob Cook**

1. PROP
2. HOOKER
3. PROP
4. LOCK
5. LOCK
6. FLANKER
7. FLANKER
8. EIGHT
9. SCRUM-HALF
10. FLY-HALF
11. WING
12. CENTRE
13. CENTRE
14. WING
15. FULL BACK
16. REPLACEMENT
17. REPLACEMENT
18. REPLACEMENT
19. REPLACEMENT
20. REPLACEMENT
21. REPLACEMENT
22. REPLACEMENT
23. REPLACEMENT

**Huia Edmonds**  
**Dan Murphy**  
**Yann Thomas**  
**James Hudson**  
**Matt Cox**  
**Dan Robson**  
**Freddie Burns**  
**Martyn Thomas**

**REFEREE:** WAYNE BARNES **ASSISTANT REFEREE:** STUART TERHEEGE  
**ASSISTANT REFEREE:** ROGER BAILEFF **4TH OFFICIAL:** JP DOYLE