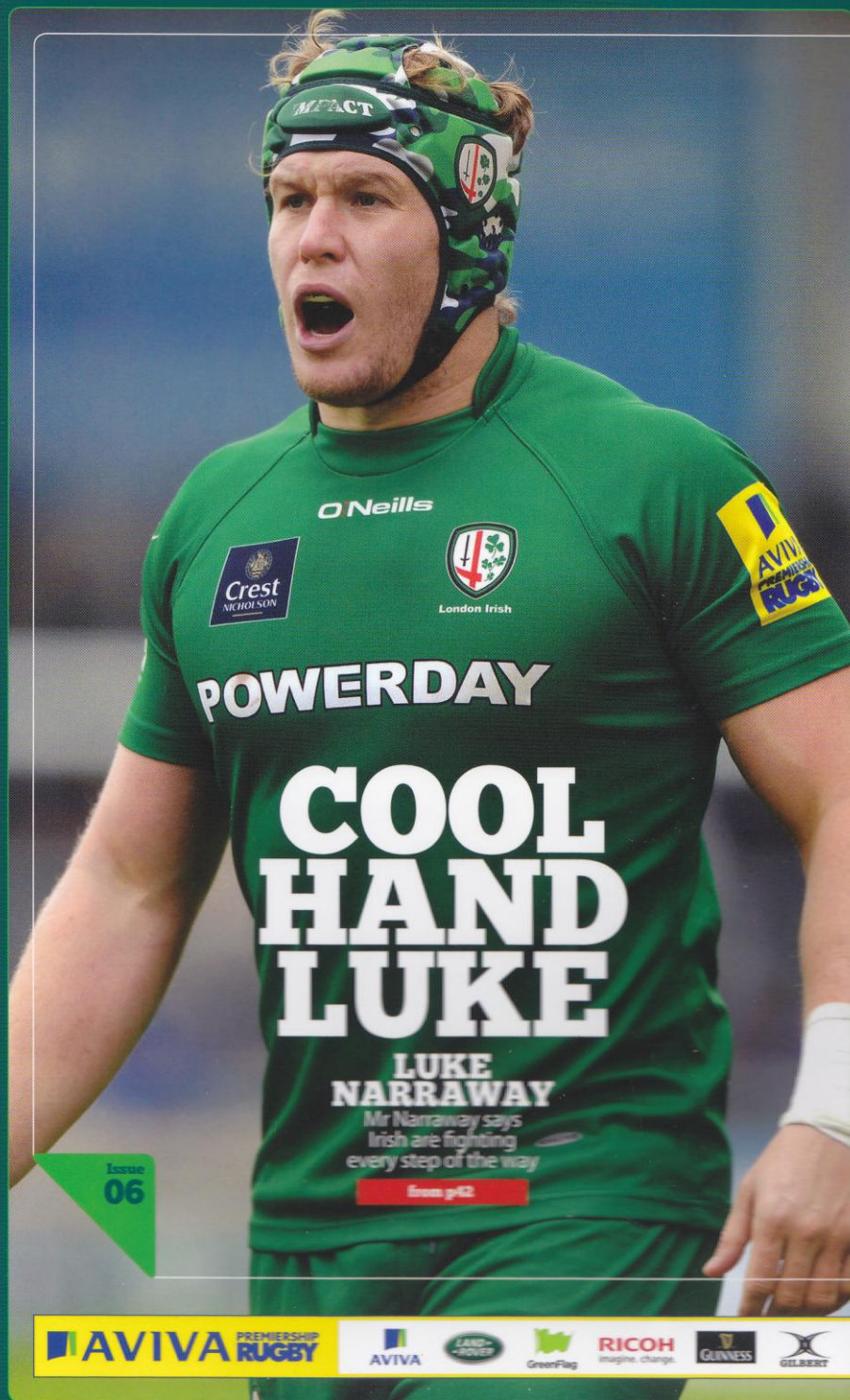




# THE EXILE

THE OFFICIAL MATCHDAY MAGAZINE OF LONDON IRISH RUGBY CLUB

vs. Gloucester Rugby  
AVIVA PREMIERSHIP RUGBY  
30.11.2014 - 13.00 KO  
Magazine Price €3



Issue  
**06**

## POWERDAY COOL HAND LUKE

**LUKE  
NARRAWAY**

Mr Narryaway says  
Irish are fighting  
every step of the way

from p42



### HOME COMFORTS

An update on our new  
home at Hazelwood

from p18



### DREAM TEAM

We continue our selection  
for the ages

from p36



### NEW FRONTIERS

Rugby set to tackle US  
challenge

from p28

Main Club Sponsor  
**POWERDAY**  
Innovative - Recycling - Solutions

**AVIVA** PREMIERSHIP RUGBY

AVIVA

LAND-ROVER

GreenFlag

RICOH  
imagine. change.

GUINNESS

GILBERT

CITIZEN

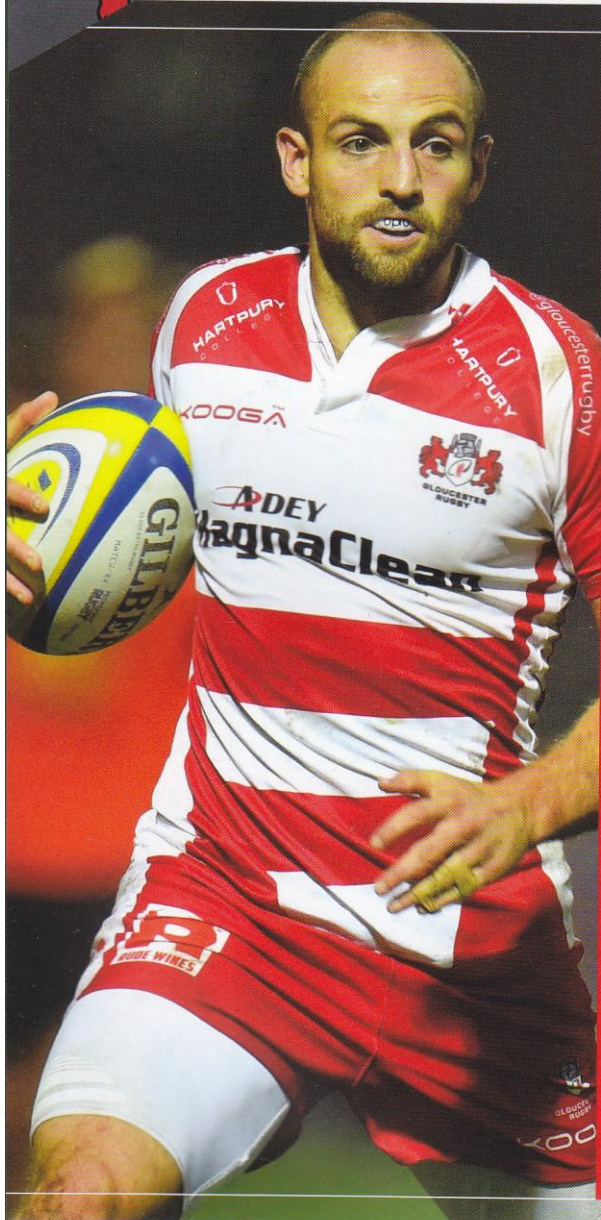
BT Sport





TODAY'S LEAGUE OPPOSITION

# GLOUCESTER RUGBY



## ONE TO WATCH CHARLIE SHARPLES

**Weight:**  
89kg (14st)  
**Height:**  
1.83m (6'0")  
**Club Apps:** 96 +15  
**Club Points:** 160

**SHARPLES**, then a member of the Gloucester Rugby Academy, made a dramatic impact on the first team squad in 2008-9.

He was set to represent England U20s against Wales but was recalled by the club and went on to make nine first team appearances, scoring a memorable first senior try against Bath Rugby.

The 2009-10 season was a memorable one for Sharples, scoring 12 tries from 18 starts (including friendlies) and was shortlisted for Try of the Year at the Guinness Premiership Awards.

2010-11 went even better for Charlie as he scored 18 tries in 29 appearances, was voted Young Player of the Year by the supporters and was selected for England Saxons.

Charlie was named in England's Rugby World Cup training squad in the summer, making his debut as a replacement against Wales and agreed a two year contract extension in July.

2011-12 was another fine campaign at club level with his try scoring tally in double figures once again and a first England start, in Paris against France. He has since added to his England cap tally, and scored his first international try against Fiji, as well as cementing a place on the right wing for Gloucester.

Charlie continues to be a potent weapon on the right wing for Gloucester and signed a new contract with the club in January 2014.



## CLUB FACTS

GLOUCESTER RUGBY

GLOUCESTER REVEALED A TURNOVER OF £12M FOR THE 2013-14 SEASON, UP 3.7% ON THE PREVIOUS YEAR, WHILE RETURNING A PRE-TAX PROFIT OF £512K, UP NEARLY 68% ON THE PREVIOUS YEAR.

ISSUE 06

THE EXILE

## GLOUCESTER RUGBY TRAVEL TO THE MADEJSKI STADIUM TO TAKE ON LONDON IRISH THIS AFTERNOON, HOPING TO BOUNCE BACK FROM THE DISAPPOINTMENT OF BACK TO BACK DEFEATS IN THE AVIVA PREMIERSHIP.

HAVING played last Friday evening, at Kingston Park against Newcastle Falcons, the squad have enjoyed a relatively long turnaround – something that is much needed given the availability of players over the past couple of weeks.

The Cherry and Whites went into the Newcastle game missing an incredible 17 players. Nine were missing on international duty, a further eight unavailable due to illness or injury.

And, by the time the team emerged for the second half, a further three players had been lost to injury. An already reshuffled side now featured a number of individuals



“For the club to increase turnover and profit reflects the hard work of everyone at the club, and is also thanks to the continued magnificent support of our sponsors and supporters who have been first class in every respect.”

STEPHEN VAUGHAN, C.E.O GLOUCESTER RUGBY

### IN CHARGE DAVID HUMPHREYS

DAVID Humphreys was announced as the next Director of Rugby at Gloucester Rugby in June 2014, and will need no introduction to Irish supporters.

Belfast born, he started his playing career at his home province of Ulster, enjoyed a spell in the Premiership with London Irish before returning to Ulster ahead of the 1998-9 season.

That season saw him play a pivotal role in the Irish province lifting the Heineken Cup, defeating Colomiers in the final at Lansdowne Road.

Capped 72 times for his country, scoring 560 points, Humphreys spent the rest of his playing career with Ulster before retiring in 2008 and taking on the role of Director of Rugby at Ravenhill.

A qualified solicitor, his time at Ulster saw him oversee the province establish itself as one of the true giants of the European rugby scene, regularly reaching the knock out stages of the Heineken Cup in the last few years, losing out in the final in 2012.

playing out of position.

Thankfully, the coaching staff will welcome back a number of players from international duty for this weekend's game. Greig Laidlaw (Scotland), Richard Hibbard and James Hook (Wales) and Sione Kalamafoni, Aleki Lutui and Sila Puafisi (Tonga) have all returned to Gloucester this week.

Having lost two games in a row in the Aviva Premiership, Gloucester will be looking to get back to winning ways this weekend before the return to European action with the back to back ties against Zebre.

What is for sure, is that it will be another step along the learning curve for Gloucester Rugby in what has been an eventful season to date.

After the many changes in personnel during the close season, both on and off the field, the main message from Kingsholm was a plea for patience, the predominant theme being that everything will take time to gel.

After all, incoming Director of Rugby David Humphreys didn't take up his post until the first day of August, and new Head Coach Laurie Fisher didn't arrive until after the

## CLUB INFO

GLOUCESTER RUGBY

WWW.GLOUCESTERRUGBY.CO.UK

GLOUCESTERRUGBY

@GLOUCESTERRUGBY

TICKET HOTLINE: 08718718781



► Brumbies' Super Rugby season came to an end.

In hindsight, perhaps winning the Premiership Rugby 7s for a second season running didn't help with the tempering of expectations!

Even then, "judge us after the first phase of the Premiership is over" was the Gloucester mantra, even after the heavy opening night defeat at reigning champions Northampton Saints.

Indeed, Gloucester have got steadily better. Premiership wins over Sale, London Welsh and Leicester have followed in addition to narrow defeats against Saracens, Exeter Chiefs and, over the past two weekends, against Quins and Newcastle.

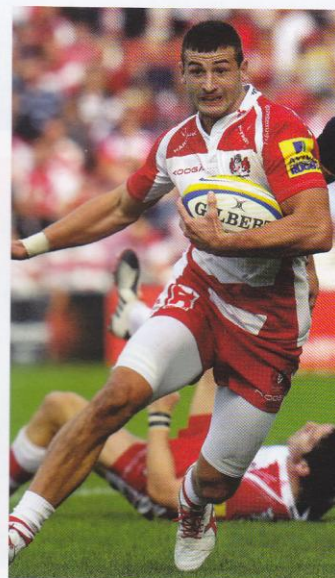
And the development has

continued through the first two weeks of European action. A 55-0 victory over CA Brive at Kingsholm was followed by a hard fought win in France over Oyonnax – wins on French soil are not to be sniffed at.

That French 'double header' was followed by the return of the LV= Cup, and a tough opener against the current holders, Exeter Chiefs. The Chiefs sneaked that one with a last minute penalty try, but Gloucester bounced back with a dogged win on the road at London Welsh.

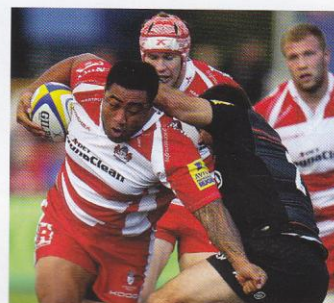
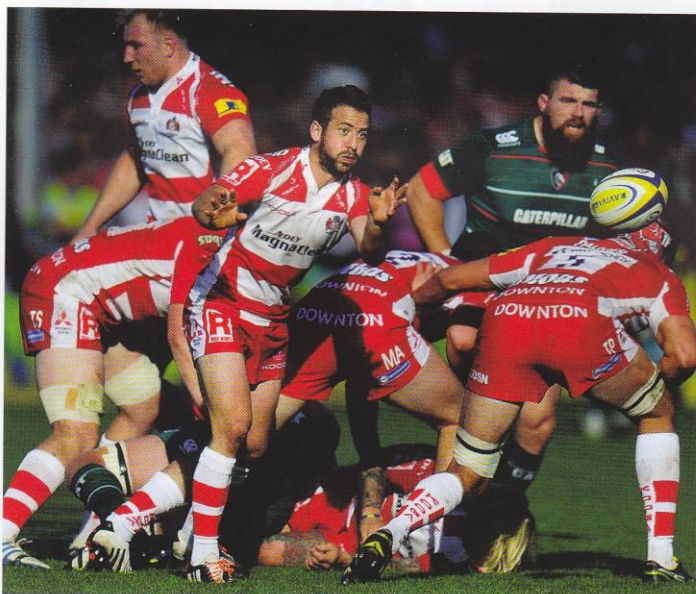
That set up the return to Aviva Premiership action, and the Cherry and Whites will be disappointed to have suffered two defeats in a row.

The goal now is to respond to that disappointment with a



**“I've got great mates here, and even though there have been some tough times here last year and in the past, I'm really happy with the way everything's looking at the moment. All our new coaches have been really impressive and for me it's just a great place to be at the moment. We're a team for the future that's building all the time.”**

**”** JONNY MAY



strong performance this afternoon. Gloucester won at the Madejski in the corresponding fixture last season and a repeat of that result would be most welcome.

Whoever dons the Cherry and White this afternoon though, they will have to be at their best as a solid team performance is what is required to leave with the points.

## CLUB FACTS

GLoucester Rugby

GLoucester REACHED THE INAUGURAL PREMIERSHIP FINAL (1999/2000) 15 POINTS CLEAR OF THEIR NEAREST RIVAL, HOWEVER UNDER THE NEW PREMIERSHIP PLAYOFF SYSTEM GLoucester LOST THE FINAL TO LONDON WASPS.



**“I’ve had the honour to have represented two of England’s greatest clubs in Leicester Tigers and the Cherry and Whites and to now have the privilege to captain Gloucester is something I dreamt of and I am thankful to the coaches for entrusting me with the role.”**

**”**

BILLY TWELVETREES

### **▲ CAPTAIN BILLY TWELVETREES**

**BILLY Twelvetrees joined Gloucester Rugby from the Leicester Tigers ahead of the 2012-13 season.**

Originally from Sussex, Billy joined the Tigers Academy in 2007 and had a spell at Leicester Lions as well as scoring 18 tries, 16 conversions, and 13 penalties for Bedford in 2008-09.

His form for Bedford saw him quickly recalled by the Tigers and he went on to become a first team regular.

Capped at Saxons level by England, he possesses an ideal mix of size and skill. He has a fine boot when kicking out of hand and is a more than

capable goal kicker.

He quickly impressed with Gloucester and earned a call up to England's Elite Player Squad for the 2013 Six Nations, making his debut against Scotland at Twickenham, scoring a try in the process.

A fine first season was reflected in his selection for the England tour of Argentina. He scored a try in the first test before being called up to the British & Irish Lions squad.

Billy then continued his fine form on the international stage coupled with picking up the captaincy for the Cherry and Whites as he appeared in all five games in the 2014 RBS Six Nations.



## A MINUTE WITH GLOUCESTER RUGBY

TODAY WE SHARE A MINUTE WITH DUBLIN BORN SHANE MONAHAN. AS YOU CAN SEE HE HAS CREATIVE FLAIR ON AND OFF THE PITCH!

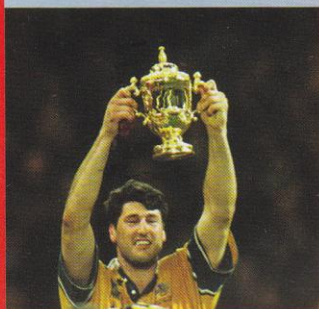


TELL US YOUR MIDDLE NAMES!

**SM.** Michael

WHAT IS YOUR FAVOURITE  
RUGBY WORLD CUP MOMENT?

**SM.** The first time I attended a game in 1999



DESCRIBE YOUR FIRST EVER  
TRY?

**SM.** Nothing special. I just put the ball down over the line at Under 7s

WHAT IS THE FIRST ALBUM OR  
SONG YOU EVER BOUGHT?

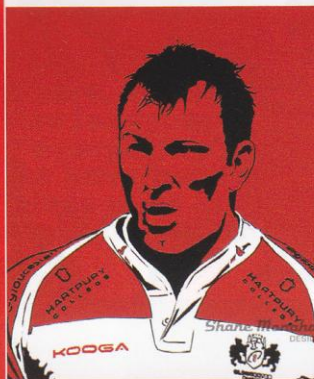
**SM.** Limp Bizkit – Chocolate Starfish and the Hot Dog Flavored Water



WHO IS YOUR AWAY DAY ROOM  
MATE?

**SM.** Matt Kvesic

DRAW US A PICTURE OF YOUR  
ROOM MATE



[www.shanemonahandesigns.com](http://www.shanemonahandesigns.com)

[@shanemdesigns](https://twitter.com/shanemdesigns)

[f shane monahan designs](https://www.facebook.com/shanemonahandesigns)

WHO IS YOUR FAVOURITE  
COMEDIAN?

**SM.** Ricky Gervais

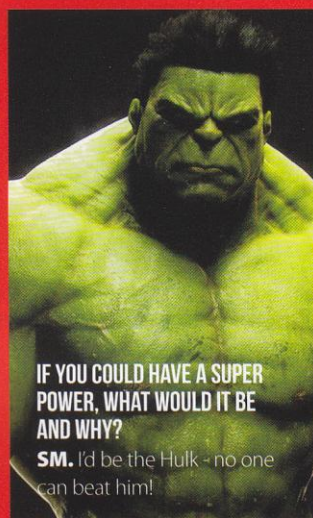


WHERE IS YOUR FAVOURITE  
HOLIDAY DESTINATION?

**SM.** Canada

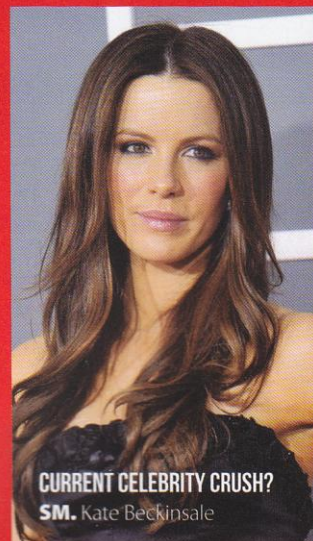
WHAT IS YOUR GUILTY PLEASURE  
FOR FOOD?

**SM.** Chocolate



IF YOU COULD HAVE A SUPER  
POWER, WHAT WOULD IT BE  
AND WHY?

**SM.** I'd be the Hulk - no one can beat him!



CURRENT CELEBRITY CRUSH?

**SM.** Kate Beckinsale



# London Irish vs Gloucester Rugby



London Irish

ROUND 9  
Sunday 30th November 2014  
KO13:00

GLOUCESTER  
RUGBY

## Top Performers

### Total Metres

Andrew Fenby	428
Alex Lewington	350
James Short	338

### Total Carries

Andrew Fenby	79
David Paice	57
Blair Cowan	48

### Total Tackles

George Skivington	53
David Paice	51
Blair Cowan	49

### Lineouts Won

Kieran Low	23
George Skivington	21
Tom Guest	9



Shane Geraghty Mark Atkinson



33	Total Carries	43
132	Total Metres	183
32	Tackles	40
9	Missed Tackles	2
1	Defenders Beaten	14
101	Total Passes	16
15	Penalties Kicked	0
1	Tries Assisted	0
0	Tries Scored	2

## Top Performers

### Total Metres

Rob Cook	512
Jonny May	293
Henry Purdy	217

### Total Carries

Rob Cook	66
Sione Kalamafoni	64
Ben Morgan	60

### Total Tackles

Tom Savage	72
Tom Palmer	69
Matt Kvesic	61

### Lineouts Won

Tom Palmer	21
Ben Morgan	16
Tom Savage	14

## Team Stats

Scrums			Lineouts			Tries			Open Play		
50	Put Ins	53	100	Throw Ins	104	13	Scored	18	86	Av. Tackles	107
36	Won	43	92	Won	87	6	No. 1st Phase	8	12	Av. Misses	16
72	% Won	81	92	% Won	84	3	No. Own Half	8	98	Av. Carries	107
15	Pen Won	23	2	Not Straight	3	4	No. In 1st Half	9	358	Av. Metres	375
17	Won Opp Feed	9	7	Quick Throw	8	9	No. In Second Half	9	15	Av. Def Beaten	22
30	% Opp Feed	18	7	Won Opp Throw	17	7	From Set Piece	8	13	Av. T'Overs Con	13
15	Pen Opp Feed	9	7	% Stolen	17	1	From Turnover	3	13	Av. Pens Con	11





0-3 0-12 6-11 9-14  
0-6 3-11 6-14 9-21

vs. Gloucester Rugby AVIVA PREMIERSHIP RUGBY

ISSUE 06

THE EXILE

## London Irish™

T P C D

■■■■

■■■■

■■■■

■■■■ PPF

■■■■

■■■■

■■■■

■■■■

■■■■

■■■■

■■■■

■■■■

■■■■

■■■■

■■■■

■■■■

■■■■

■■■■

■■■■

■■■■

■■■■

■■■■

■■■■

■■■■

■■■■

TOM HOMER  
FULL-BACK

ALEX LEWINGTON  
RIGHT WING

FERGUS MULCHRONE  
OUTSIDE CENTRE

SHANE GERAGHTY  
INSIDE CENTRE

JAMES SHORT  
LEFT WING

CHRIS NOAKES  
FLY-HALF

SCOTT STEELE  
SCRUM-HALF

TOM COURT  
LOOSEHEAD PROP

DAVID PAICE  
HOOKER

HALANI AULIKA  
TIGHTHEAD PROP

GEORGE SKIVINGTON (C)  
LOCK

SEAN COX  
LOCK

JEBB SINCLAIR  
BLINDSIDE FLANKER

BLAIR COWAN  
OPENSIDE FLANKER

OFISA TREVIRANUS  
NUMBER EIGHT

JIMMY STEVENS  
REPLACEMENT 1

LEO HALAVATAU  
REPLACEMENT 2

GEOFF CROSS  
REPLACEMENT 3

KIERAN LOW  
REPLACEMENT 4

LUKE NARRAWAY  
REPLACEMENT 5

DARREN ALLINSON  
REPLACEMENT 6

EOIN GRIFFIN  
REPLACEMENT 7

ANDREW FENBY  
REPLACEMENT 8

## Gloucester Rugby

T P C D

■■■■

■■■■

■■■■

■■■■

■■■■

■■■■

■■■■ PPF

■■■■

■■■■

■■■■

■■■■

■■■■

■■■■

■■■■

■■■■

■■■■

■■■■

■■■■

■■■■

■■■■

■■■■

■■■■

■■■■

■■■■

■■■■

STEVE MCCOLL  
FULL-BACK

CHARLIE SHARPLES  
RIGHT WING

BILL MEAKES  
OUTSIDE CENTRE

MARK ATKINSON  
INSIDE CENTRE

HENRY PURDY  
LEFT WING

JAMES HOOK  
FLY-HALF

GREIG LAIDLAW  
SCRUM-HALF

YANN THOMAS  
LOOSEHEAD PROP

RICHARD HIBBARD  
HOOKER

JOHN AFOA  
TIGHTHEAD PROP

TOM PALMER  
LOCK

TOM SAVAGE  
LOCK

SIONE KALAMAFONI  
BLINDSIDE FLANKER

MATT KVESIC (C)  
OPENSIDE FLANKER

GARETH EVANS  
NUMBER EIGHT

DARREN DAWIDIUK  
REPLACEMENT 1

SILA PUAFISI  
REPLACEMENT 2

SHAUN KNIGHT  
REPLACEMENT 3

ELLIOTT STOOKE  
REPLACEMENT 4

ROSS MORIARTY  
REPLACEMENT 5

DAN ROBSON  
REPLACEMENT 6

BILLY BURNS  
REPLACEMENT 7

SHANE MONAHAN  
REPLACEMENT 8

### THE OFFICIALS

REFEREE: Matthew Carley ASSISTANT REFEREES: Roy Maybank & Ashley Rowden TMO: David Sainsbury