

WARRIOR



Vs **GLOUCESTER RUGBY** | THURSDAY 10.12.2015 | KICK-OFF 19:45 | £3.00 | :05



OFFICIAL PARTNERS



OFFICIAL SUPPLIERS

WELCOME
GLOUCESTER RUGBY



THE BOSS

DIRECTOR OF RUGBY DAVID HUMPHREYS

David Humphreys was announced as the Director of Rugby at Gloucester Rugby in June 2014.

Belfast born, he started his playing career at his home province of Ulster, and enjoyed a spell in the Premiership with London Irish before returning to Ulster ahead of the 1998/99 season.

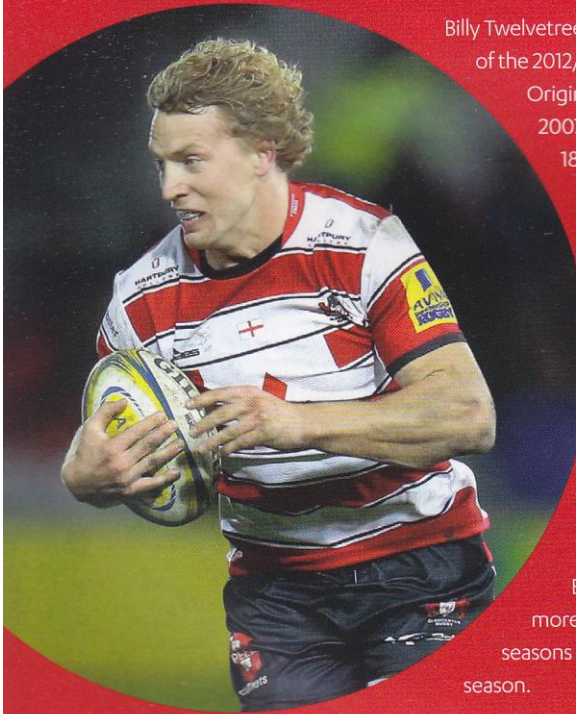
That season saw him play a pivotal role in the Irish province lifting the Heineken Cup, defeating Colomiers in the final at Lansdowne Road.

Capped 72 times by his country, scoring 560 points, Humphreys spent the rest of his playing career with Ulster before retiring in 2008 and taking on the role of Director of Rugby at Ravenhill.

A qualified solicitor, his time at Ulster saw him oversee the province establish itself as one of the true giants of the European rugby scene, regularly reaching the knock-out stages of the Heineken Cup in the last few years, losing out in the final in 2012.



THE CAPTAIN : BILLY TWELVETREES



Billy Twelvetrees joined Gloucester Rugby from Leicester Tigers ahead of the 2012/13 season.

Originally from Sussex, Billy joined the Tigers Academy in 2007 and had a spell at Leicester Lions as well as scoring 18 tries, 16 conversions, and 13 penalties for Bedford in 2008/09.

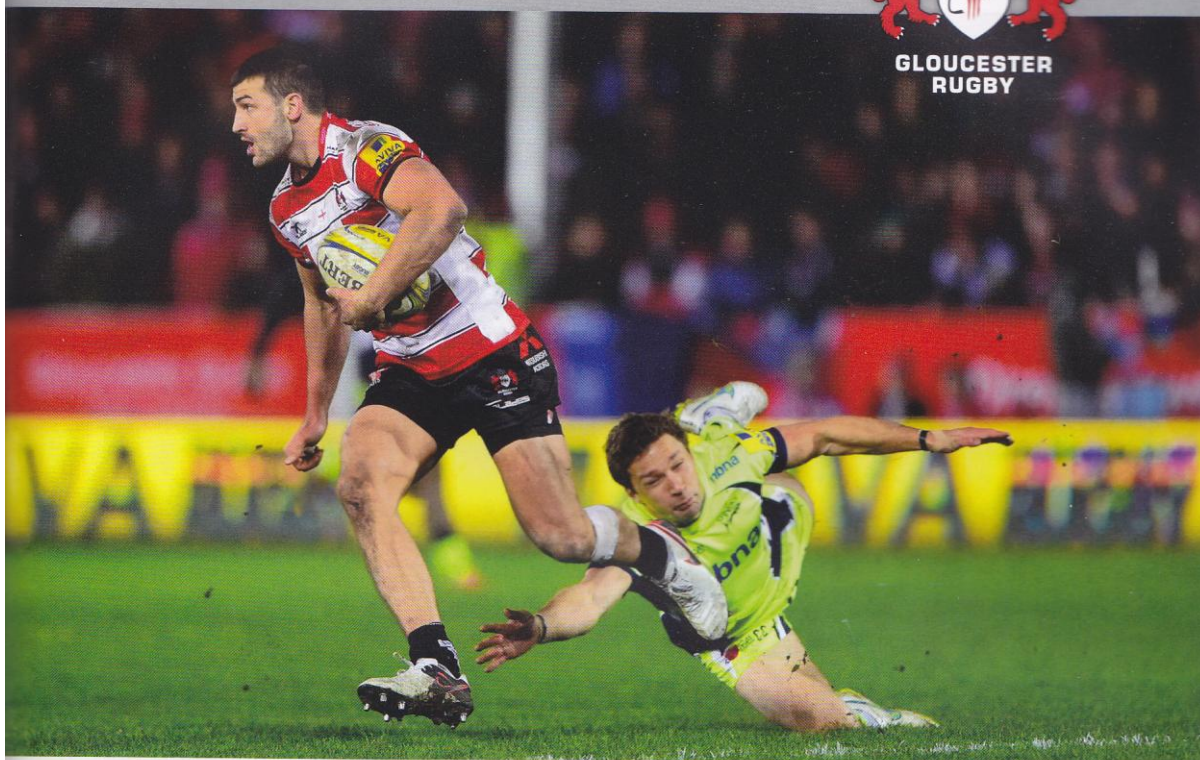
His form for Bedford saw him quickly recalled by the Tigers and he went on to become a first-team regular.

He quickly impressed with Gloucester and earned a call-up to England's Elite Player Squad for the 2013 Six Nations, making his debut against Scotland at Twickenham - scoring a try in the process.

A fine first season was reflected in his selection for the England tour of Argentina. He scored a try in the first test before being called-up to the British & Irish Lions squad.

Billy has now won 22 caps for England and featured in more than 20 games for Gloucester in each of his three full seasons with the club, as well as taking over the captaincy last season.

GLOUCESTER LOOKING TO MAKE STRIDES FORWARD



The Cherry and Whites headed into the 2015/16 campaign with a greater sense of familiarity than in recent years, with a much quieter and settled summer setting the squad up well ahead of the new season.

As Gloucester kicked-off 2014/15 at Northampton, a whole host of new players were finding their feet and the coaching team had literally just arrived.

It was little surprise that the season got off to a shaky start away at the then defending champions.

Wind the clock forward and Director of Rugby David Humphreys and Head Coach Laurie Fisher embark on their second season at the helm, with the only new face seeing Jonny Bell join as Defence Coach alongside the Senior Coaching Team of Nick Walshe and Trevor Woodman.

With All Black Jeremy Thrush and stand-out Super Rugby performer Tom Marshall two new high-profile signings, the Cherry and Whites are building a strong squad as well as focusing on continuing to utilise the efforts of the Gloucester Rugby Academy following impressive debut seasons from a number of their young stars.

Meanwhile, Paul Doran Jones returns to the club for a second spell, joined as new front row resources by fellow props Paddy McAllister and Nicky Thomas, while former Wasps Tom Lindsay will add considerable experience to the hooking ranks.

The challenge for Gloucester is to build on the progress made last season. The team may well have lifted the European Rugby Challenge Cup, but no one was happy with the team's finishing position in the Aviva

Premiership.

To date, it's been a steady start for the Cherry and Whites. An efficient opening day win at Newcastle, traditionally a tough venue for Gloucester, was followed by a narrow home defeat at home to Saracens.

However, Gloucester bounced back with a hard-fought victory over today's opponents Worcester Warriors before an away defeat at Wasps.

The defence of the European Rugby Challenge Cup got off to a decent start with wins over Zebre and La Rochelle setting-up the double-header against the Warriors and Gloucester come into today's 'first leg' off the back of an away defeat at Northampton and a hard-fought home win over Sale Sharks.

CAPTAIN TWELVETREES LOOKING TO BUILD ON SALE VICTORY

The Cherry and Whites picked-up a crucial Aviva Premiership victory last Friday evening over Sale Sharks.

And with a short turnaround to contend with, skipper Billy Twelvetrees is delighted with the win to boost the squad ahead of a tricky European double header.

He said: "We knew coming back home we needed to defend well and we did that in patches, put Sale under pressure in their half and came away with some good tries.

"This showed resilience and there was a lot of relief at the end to get over the line."

The Gloucester forwards were put

under the microscope by certain media pundits in midweek, but Twelvetrees was thrilled that the Cherry and White pack was able to show its true quality against a stubborn Sharks' engine room.

He continued: "We've got a great squad here and we really believe in what we are doing as a team.

"A lot of the boys were angry about the Saints game and they wanted to get back out there and against Sale we were judged on that 80 minutes.

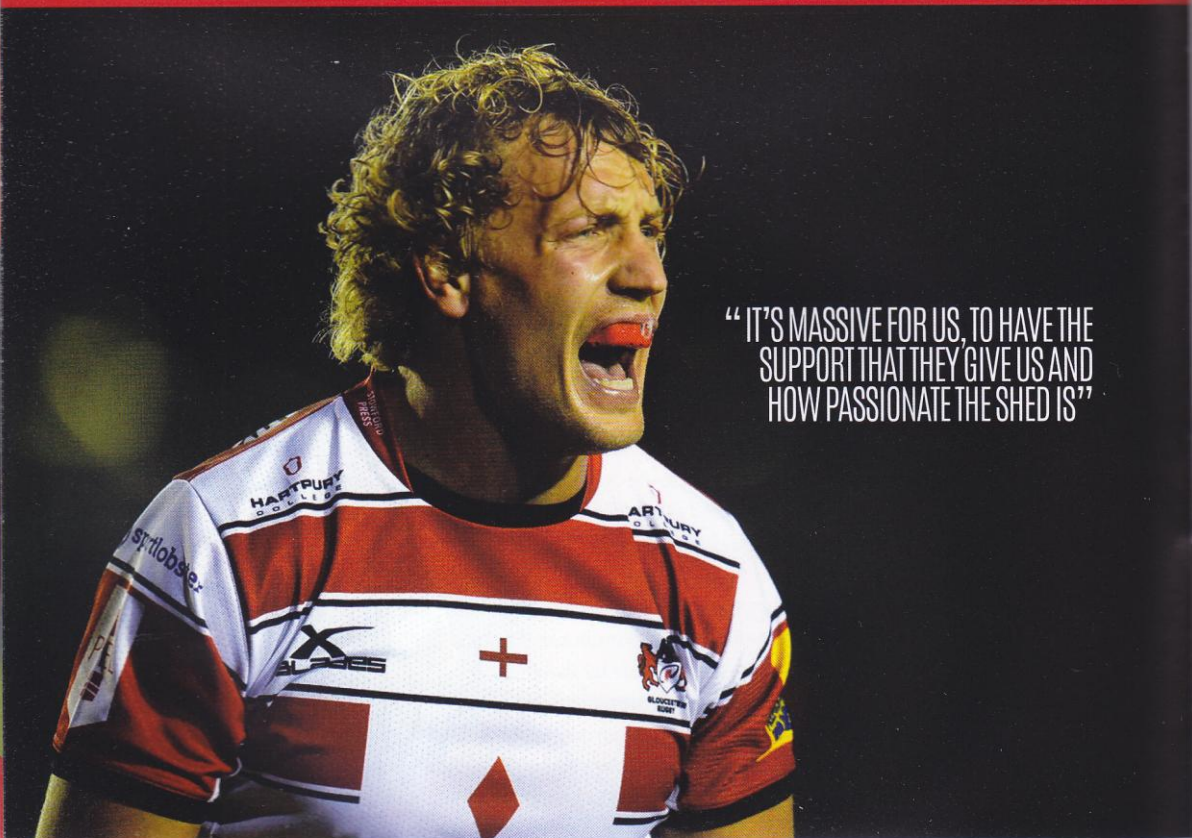
"The boys love being out there playing rugby, so we thoroughly deserved to get those four points at home."

Captain Twelvetrees noticed the lift in atmosphere as the hosts hit their straps in the second-half, and thanked the Kingsholm faithful for their backing.

"It's massive for us, to have the support that they give us and how passionate The Shed is.

"It is intimidating for the opposition and it shows the reaction we get when we put the tries on the board. It's deafening and we love it."

There is set to be a good number of travelling supporters heading to Sixways tonight in what will be another great contest between the two local rivals.

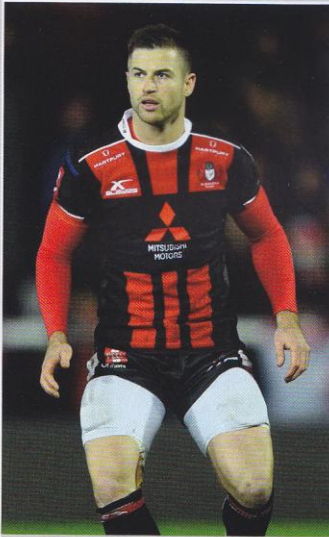


"IT'S MASSIVE FOR US, TO HAVE THE SUPPORT THAT THEY GIVE US AND HOW PASSIONATE THE SHED IS"



**GLOUCESTER
RUGBY**

THE DANGER MEN



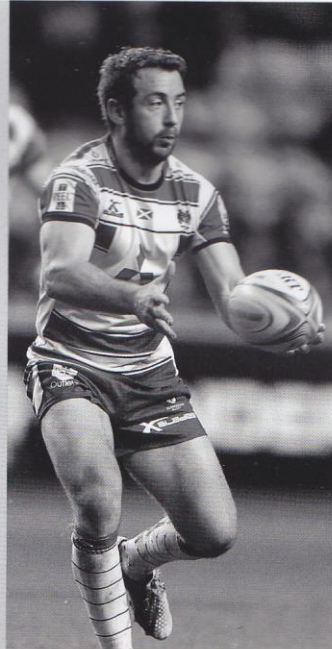
HENRY TRINDER

The talented centre has been working his way back to full match fitness after a series of injuries have disrupted the last 12 months.

The 26-year-old made his debut at the tail end of the 2007/08 season and is closing in on 100 competitive appearances for the club.

Capped at England Under 20 and Saxons level, Trinder has also represented England against the Barbarians in a non-capped international.

On his day, he can unlock the tightest of defences and boasts an impressive try-scoring record. His return to the Gloucester first-team squad helps to give the back line a different dimension.



GREIG LAIDLAW

Scrum-half Greig Laidlaw is in his second season at Gloucester, having moved south from Edinburgh.

Capable of playing both scrum-half and fly-half, but preferring the number nine jersey, Laidlaw is a top-class kicker and brings vital experience and leadership to the Gloucester Rugby squad.

He certainly shone in his first season in the Cherry and White of Gloucester, scoring 269 points in total and starring in the club's successful European Rugby Challenge Cup campaign.

Laidlaw has also been a regular for Scotland in recent seasons, skipping his country at the 2015 Rugby World Cup and being shortlisted for World Rugby Player of the Year.



JACOB ROWAN

Jacob Rowan is starting to make a real impression in the Cherry and White of Gloucester in his second season at Kingsholm.

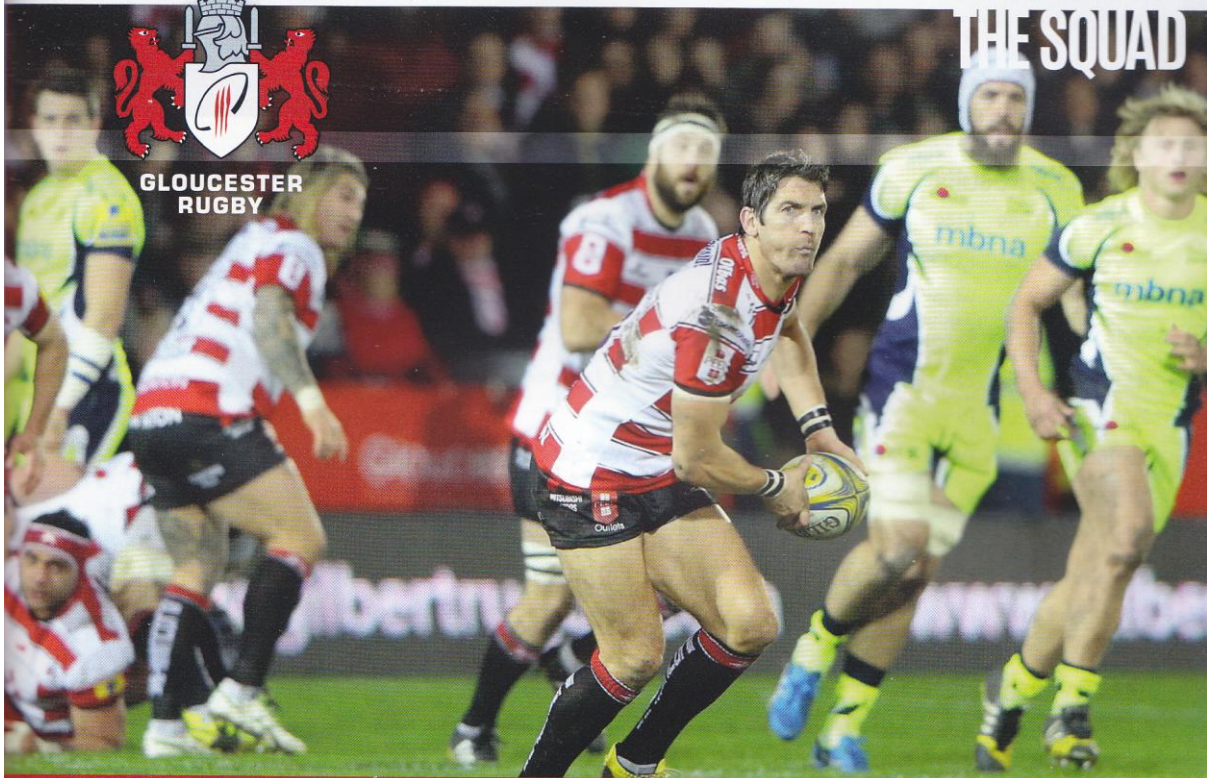
Named as the youngest ever Leeds' captain in 2012, Jacob is a former England Under 18 and Under 20 international who captained the Under 20s during their Junior World Championship campaign in 2009/10.

His first season with Gloucester was disrupted slightly by injury, but he is pushing former Worcester favourite Matt Kvesic hard for the starting openside position, and has won some key turnovers in recent weeks in the wins over La Rochelle and Sale and skippered the side against Zebre Rugby.



**GLOUCESTER
RUGBY**

THE SQUAD



SURNAME	FORENAME	POSITION	HEIGHT	WEIGHT	DOB	HONOURS		
Afoa	John	prop	1.82m	6ft	119kg	18st 11lb	16.10.83	New Zealand
Atkinson	Mark	centre	1.98m	6ft 5in	108kg	17st	08.03.90	
Braley	Callum	scrum half	1.78m	5ft 10in	86kg	13st 7lb	23.03.94	
Burns	Billy	fly half	1.82m	6ft	86kg	13st 7lb	13.06.94	
Cook	Rob	full-back	1.81m	6ft	94kg	14st 12lb	07.07.84	
Dawidiuk	Darren	hooker	1.77m	5ft 9in	108kg	17st	21.09.87	
Doran-Jones	Paul	prop	1.84m	6ft	121kg	19st	02.05.85	England
Evans	Gareth	back row	1.90m	6ft 3in	110kg	17st 5lb	19.09.91	
Galarza	Mariano	lock	2.04m	6ft 7in	118kg	18st 8lb	11.12.86	Argentina
Halaifonua	David	wing	1.88m	6ft 2in	104kg	16st 5lb	05.07.87	Tonga
Hibbard	Richard	hooker	1.82m	6ft	112kg	17st 9lb	13.12.83	Wales
Hicks	Tom	lock	2.03m	6ft 8in	119kg	18st 9lb	25.10.91	
Hook	James	fly half	1.85m	6ft 1in	96kg	15st 2lb	27.06.85	Wales
Hudson	James	lock	2.00m	6ft 7in	114kg	17st 13lb	28.10.81	
Kalamafoni	Sione	back row	1.90m	6ft 3in	121kg	19st	18.05.88	Tonga
Kvesic	Matt	back row	1.88m	6ft 2in	105kg	16st 8lb	14.04.92	England
Heinz	Willi	scrum half	1.81m	5ft 11in	94kg	14st 11lb	24.11.86	
Laidlaw	Greig	half back	1.76m	5ft 8in	80kg	12st 8lb	12.10.85	Scotland
Latta	Joe	lock	1.97m	6ft 6in	114kg	17st 13lb	07.04.92	
Lindsay	Tom	hooker	1.87m	6ft 2in	108kg	17st	18.11.87	
Marshall	Tom	centre	1.83m	6ft	91kg	14st 5lb	05.07.90	
May	Jonny	centre	1.88m	6ft 2in	92kg	14st 7lb	01.04.90	England
McAllister	Paddy	prop	1.83m	6ft	122kg	19st 4lb	20.07.89	
McCull	Steve	full-back	1.85m	6ft 1in	98kg	15st 6lb	16.08.88	
Meakes	Billy	centre	1.86m	6ft 2in	100kg	15st 10lb	23.02.91	
Morgan	Ben	number eight	1.91m	6ft 3in	115kg	18st 7lb	18.02.89	England
Moriarty	Ross	back row	1.88m	6ft 2in	103kg	16st 2lb	18.04.94	Wales
Murphy	Dan	prop	1.86m	6ft 1in	119kg	18st 12lb	27.10.85	
Protheroe	Matt	fly half	1.79m	5ft 11in	73kg	11st 6lb	10.10.96	
Purdy	Henry	wing	1.87m	6ft 2in	97kg	15st 3lb	21.05.94	
Reynolds	Steph	wing	1.75m	5ft 9in	83kg	13st	23.10.93	
Rowan	Jacob	back row	1.85m	6ft 1in	105kg	16st 8lb	14.01.90	
Savage	Tom	lock/ back row	1.95m	6ft 5in	118kg	18st 9lb	18.04.89	
Sharples	Charlie	wing	1.83m	6ft	90kg	14st 2lb	17.08.89	England
Stooke	Elliott	lock	2.01m	6ft 7in	125kg	19st 10lb	10.09.93	
Thomas	Dan	back row	1.83m	6ft 1in	100kg	15st 11lb	11.10.93	
Thomas	Nicky	prop	1.89m	6ft 2in	116kg	18st 4lb	26.08.94	
Thomas	Yann	prop	1.86m	6ft 1in	117kg	18st 7lb	16.04.90	
Thrush	Jeremy	lock	1.98m	6ft 6in	118kg	18st 8lb	19.04.85	New Zealand
Trinder	Henry	centre	1.84m	6ft 1in	93kg	14st 8lb	14.04.89	
Twelvetrees	Billy	centre	1.92m	6ft 3in	103kg	16st 3lb	15.11.88	England
Wood	Nick	prop	1.83m	6ft 1in	107kg	16st 12lb	09.01.83	

TODAY'S TEAMS

Vs **Gloucester Rugby** | Thursday 10.12.2015 | Kick-off 19:45

0-3
7-3
7-10
10-10

10-17
10-22
17-22
17-29



17-34
22-34



WARRIORS

Versus

GLOUCESTER

BEN HOWARD 15	FULL-BACK	15 STEVE McCOLL <i>T</i>
<i>T</i> DEAN HAMMOND 14	WING	14 DAVID HALAIFONUA
ALEX GROVE 13	CENTRE	13 HENRY TRINDER
ANDY SYMONS 12	CENTRE	12 MARK ATKINSON
TOM BIGGS 11	WING	11 HENRY PURDY <i>TT</i>
<i>C DGC</i> RYAN LAMB 10	FLY-HALF	10 BILLY BURNS
CHARLIE MULCHRONE (C) 9	SCRUM-HALF	9 GREIG LAIDLAW (C) <i>PCGG</i>
RYAN BOWER 1	PROP	1 NICK WOOD
JABA BREGVADZE 2	HOOKER	2 TOM LINDSAY
GARETH MILASINOVICH 3	PROP	3 PAUL DORAN-JONES
DAN SANDERSON 4	LOCK	4 ELLIOTT STOOKE
<i>T</i> DARREN O'SHEA 5	LOCK	5 MARIANO GALARZA
MATT COX 6	FLANKER	6 SIONE KALAMAFONI
CARL KIRWAN 7	FLANKER	7 JACOB ROWAN
MARCO MAMA 8	NO.8	8 LEWIS LUDLOW
BEN SOWREY 16	REPLACEMENT	16 DARREN DAWIDIUK
VAL RAPAVA RUSKIN 17	REPLACEMENT	17 YANN THOMAS
<i>T</i> MIKE DANIELS 18	REPLACEMENT	18 NICKY THOMAS
DARREN BARRY 19	REPLACEMENT	19 TOM HICKS
SAM BETTY 20	REPLACEMENT	20 DAN THOMAS
JONNY ARR 21	REPLACEMENT	21 CALLUM BRALEY
TIFF EDEN 22	REPLACEMENT	22 BILLY TWELVETREES <i>T</i>
MAX STELLING 23	REPLACEMENT	23 ROB COOK <i>T</i>

MATCH OFFICIALS

Referee: Alexandre Ruiz (FRA)
Assistant Referees: Salem Attalah & Mathieu Noirot
TMO: Philippe Bonhoure