

PRICE—ONE PENNY.

THE FINEST BREAD IN THE UNITED KINGDOM
 IS MADE IN NEWPORT, Mon.

HAVE YOU TRIED

JOHNS' ?

"GOLD MEDAL" BREAD

WINNER OF OVER 500 GOLD AND SILVER MEDALS.

A. E. JOHNS : BELLE VUE BAKERY : Tel. 3429.

Newport Rugby Football Club

OFFICIAL



PROGRAMME

Saturday, January 14th, 1933.

Gloucester v. Newport

KICK-OFF AT 2.45 P.M.

Telephone 2951.

After the Match Call at

SWEETING'S CAFE

23 MILL STREET

(Near Station and Bus Centre).

TEAS & REFRESHMENTS at reasonable prices.

Try our famous PORK PIES.

Other Address—12 CORPORATION ROAD.

GEORGE BELL, Printer and Stationer, 53 Commercial Street, Newport

GREAT WESTERN RAILWAY.
EXCURSIONS from NEWPORT

RUGBY INTERNATIONAL MATCH

ENGLAND v. WALES

AT TWICKENHAM, SATURDAY, JANUARY 21st, 1933.

Depart 5.50 and 9.0 a.m. to London (Paddington) 13/6.

Depart 5.50 a.m. to London—Combined Trips—Rail to and from London : Motor Coach Drive to Restaurant for Breakfast (Bacon and Eggs, Rolls, Butter, Preserves, Tea or Coffee). Conducted Morning Motor Coach Tour of London (Tower of London, St. Paul's, Mansion House, etc.), terminating at Restaurant for Hot Luncheon (Soup, Roast Beef, Vegetables, Sweets, Roll and Cheese).

Motor Coach Drive to Twickenham for Match and back to City for Meat Tea (Cold Ham, Beef, Tongue, Salads, Preserves, Bread and Butter, Cake and Tea). **Inclusive Charge—27/6 per person.**

(The Charge for organised Parties of 25 to 27 is 1/- per head less)

Depart 10.45 a.m. **Inclusive Half-day Excursion to London (Ealing Broadway):**

By Rail, Luncheon on Train, Motor Coach Drive direct to **Twickenham Football Ground**. After the Match, Motor Drive to London being set down at a Restaurant where a Meat Tea will be provided. Returning from Paddington at 7.50 p.m. Inclusive fare 19/6 per person.

Tickets for the above combined trips must be booked in advance.

For full details see special announcements.

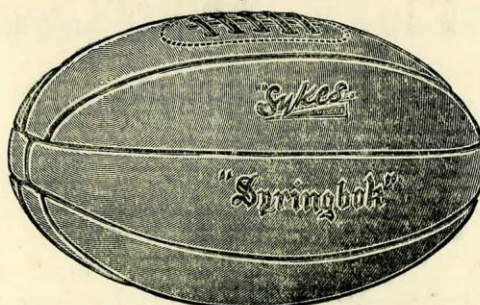
Paddington Station.

JAMES MILNE, General Manager.

FUSSELL'S SPORTS DEPOT
2 DOCK ST., NEWPORT.

Established
1889.

Hockey.
Football.
Squash.
Badminton.
Fencing.



Telephone
4508.

Golf.
Running.
Tennis.
Lacrosse.
Net Ball.

GUNS & CARTRIDGES.

We hold the largest Stock of **GUNS & CARTRIDGES** in S. Wales.
CALL AND INSPECT.

FIFTY YEARS AGO.

WHEN GLOUCESTER LAST WON AT NEWPORT.

Gloucester, our visitors to-day, are, in spite of their big reputation, one of the few teams left who seem to find it impossible to win at Newport. It is an extraordinary fact that the Citizens have not won here for fifty years, for their last victory was on January 6th, 1883, by 1 goal, 1 try to nil. At Kingsholm it has been a different matter, for generally Newport have had considerable difficulty in winning on that famous ground. Still, it is noteworthy that a famous Club like Gloucester have found it possible to beat Newport only 13 times since fixtures were first arranged. Newport's victories number 62, and there have been 12 draws.

In the Gloucester side to-day we hope to see Peter Hordern, last year's Vice-Captain of Newport, and an old Monmouth School Colleague of his, Orichton-Miller, the Scottish International winging forward. Other interesting personalities in the Gloucester team are Roy James, their outside half, who will be remembered for a wonderfully fine display for a badly beaten side against Newport last year, and Boughton, who has for years been in the first flight of full backs.

LUCKY PROGRAMME NUMBERS.

To-day we are giving Two Lucky Programme Numbers. Each person holding the numbered Programme sent round at half-time will be given Two Tickets for our Dance and Whist Drive at the Baths, on January 19th, on application to Secretary after the game.

Winner of Lucky Programme v. Plymouth Albion, No. 672, was Mr. S. J. Mainwaring, Lon Towy, Sketty, Swansea.

PILL GROUNDS.

Saturday, Jan. 21—v. Blaenavon, 3.15 p.m.

Saturday, Jan. 28—v. Abertillery, 3.15 p.m.

L. R. CROUCH

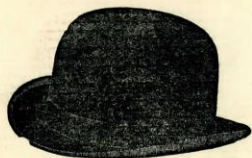
**THE CITY JEWELLER,
NEWPORT & CARDIFF**

Telephone 3799. .'. Established 1796.

**Specialist in Trophies of every description suitable for
Public and Private Presentations
at Lowest Cash Prices.**

ENGAGEMENT RINGS

of the
Finest Quality and Workmanship.



PURE Silk Lined 10/6
FUR
Official Club Ties in Stock.

The Practical Hatters

WITH OVER 30 YEARS' EXPERIENCE.

NOTT BROS LTD

OPPOSITE HILL ST

52 COMMERCIAL STREET



PURE In Four Shades 10/6
FUR

Official Club Ties in Stock.



The Fastest Track in the Country
Holder of 3 World's Records

525 yds. Flat, 29.55 'Mick the Miller'
725 yds. Flat, 41.86 'Clandown Sweep'
525 yds. Hurdle 30.52 'Front Rogue'

7.15 RACING 7.15

Every **TUESDAY, THURSDAY**
and ***SATURDAY**
*Also 3.30

Admission 3/6 (Ladies 2/5), 1/6, 1/3
Fully Electric Tote in all Enclosures.

Colours		GLOUCESTER		RED AND WHITE	
RIGHT.		Full Back, D. M. Parker (1)		LEFT.	
Right Wing, R. G. Hook (2)	Right Centre, F. Edwards (3)	Left Centre, J. C. Brooks (4)	Left Wing, W. V. Sheppard (5)		
Outside Half, D. Meadows (7)		Forwards, F. Wadley, Capt. (8) A. Carpenter (9)	E. Comley (10) R. Morris (11)	Inside Half, C. Fifield (6)	P. Hordern (15) T. Hiam (16)
Referee, Mr. W. H. Harris, Risca.				NEXT HOME MATCH— Kick-off 3.15 p.m. Llanelli, Sat., Feb. 4th.	
		Forwards, E. J. Shiner, Capt. (10) W. G. C. Williams (12)	G. L. Gwilliam (19) K. Taylor (16)	S. R. Elms (18) V. J. Law (17)	H. A. Shiner (14) J. R. Evans (11)
Inside Half, A. R. Tovey (7)		Left Wing, Hywel Jones (5)	Left Centre, K. Squires (4)	Right Centre, G. V. Jones (3)	Right Wing, S. I. Evans (2)
LEFT.		Full Back, W. A. Everson (1)		RIGHT.	
Colours		NEWPORT		BLACK AND AMBER	



FURNISHING
COMPANY
FOR A
SQUARE DEAL!

The
ROATH
FURNISHING CO

137a Commercial St.
NEWPORT.

Telephone **2649**.
After Hours **2892**.

Telegrams: "VILE BROS, NEWPORT"

VILE BROTHERS

(T. H. VILE)

MANUFACTURERS OF HIGH CLASS AERATED WATERS.

ASK FOR VILBRO AND FOOTBALL STOUT OUR SPECIALITIES

Factory—ALMA STREET, NEWPORT, MON.

QUEEN'S HOTEL

FOR

LUNCHEONS. TEAS. DINNERS.

PHILLIPS' NOTED ALES AND STOUT.

SUPPORTERS' ANNUAL OUTING.

DON'T FORGET January 28th, our Trip to Bristol. We want a good following to support the Team. Following are the times of Trains—

TRAIN ARRANGEMENTS.

A Special Train leaves Newport **1.35 p.m.**, arriving Ashley Hill 2.15 p.m., Stapleton Road 2.20 p.m., Lawrence Hill 2.25.

Return Times—Leave Lawrence Hill **11.10 p.m.**, Stapleton Road **11.15 p.m.**, arriving Newport 11.55 p.m.

Supporters who wish to return earlier can do so by the following trains from **Stapleton Road** only—**6.5 p.m.**, **7.30 p.m.**, and **9.15 p.m.**
Return Fare 3/-.

Our 9th ANNUAL Whist Drive and Dance.

BATHS, STOW HILL.

1. Don't forget Thursday next.
2. **The Leading Dance of Newport.**
3. Night of Nights—The Night of the Year.
4. Everybody assured of a Jolly Time.
5. **Whist Prizes and Spot Dance Prizes over £20/0/0.**
6. **Whist 7.50 to 9.50. Dancing 8 to 2 a.m. Novelties.**
7. **Billy Griffiths and his Band.**
8. **Also the Great Chain Dance.**
9. Six Hours real enjoyment.
10. **Tickets (Limited) 3/- each**, and can be obtained from any Member of the Committee, or at Gymnasium from Secretary after the Match.

PAVILION THEATRE

STOW HILL

Sole Lessee and Manager - J. W. Wiffen.

Week commencing Monday, January 16th, 1933

MAUREEN O'SULLIVAN, Betty Compson and Montagu Love
IN

THE SILVER LINING

ALSO

HIS LORDSHIP

Featuring **POLLY WARD and JERRY VERNON**

FREE Car Service—Post Office—5 to 8 p.m. 15 minute Service.

Admission—Before 4 p.m., 6d. After 4 p.m., 6d., 9d. 1-, 1/3

WHEN IN NEWPORT

VISIT THE

Lord Raglan Hotel

Commercial Street.

NOTED FOR

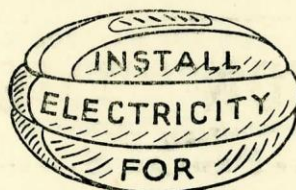
BASS' ALES AND STOUT.

Proprietor—MORGAN MOSES.

COUNTY BOROUGH OF NEWPORT ELECTRICITY DEPT.

FOR THE
BEST RESULTS.

ALL —



—WAYS

LIGHTING, HEATING,
POWER & COOKING.

LIGHTING INSTALLED FREE.

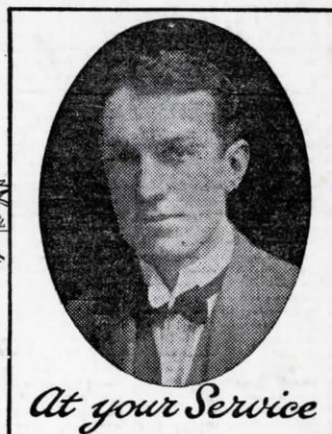
For Particulars apply :

Phone { 3154
3155

"Electric House," 191-2 Dock Street,
NEWPORT, Mon.

**RACING.
FOOTBALL.**

The Oldest Business in Wales.
Established over 25 years.



PERSONALLY CONDUCTED BY
J.E. JONES EXETER CHAMBERS, DEVON PLACE, **NEWPORT** MON.
TELEPHONE: 2165 (Ten Lines) Private Branch Exchange. TELEGRAMS: "JIMMY" NEWPORT.

NO LIMIT.

WIN AND PLACE. SINGLES AND DOUBLES.

*DAILY LETTER COMMISSIONS a Speciality.
Winnings by Return immediately Results are known.*

DO YOUR BUSINESS WITH THE MAN YOU KNOW
ONE MAN—ONE ADDRESS—ONE BUSINESS.

Are YOU participating in "JIMMY'S" FOOTBALL
POOLS

Compare my Weekly Returns and send for Coupons

Please send Coupons to—

NAME.....

ADDRESS.....

Only ½d. Stamp required.

Published by the Newport Rugby Supporters' Club.

General Hon. Sec., R. J. WEBB, 72 Blewitt Street.