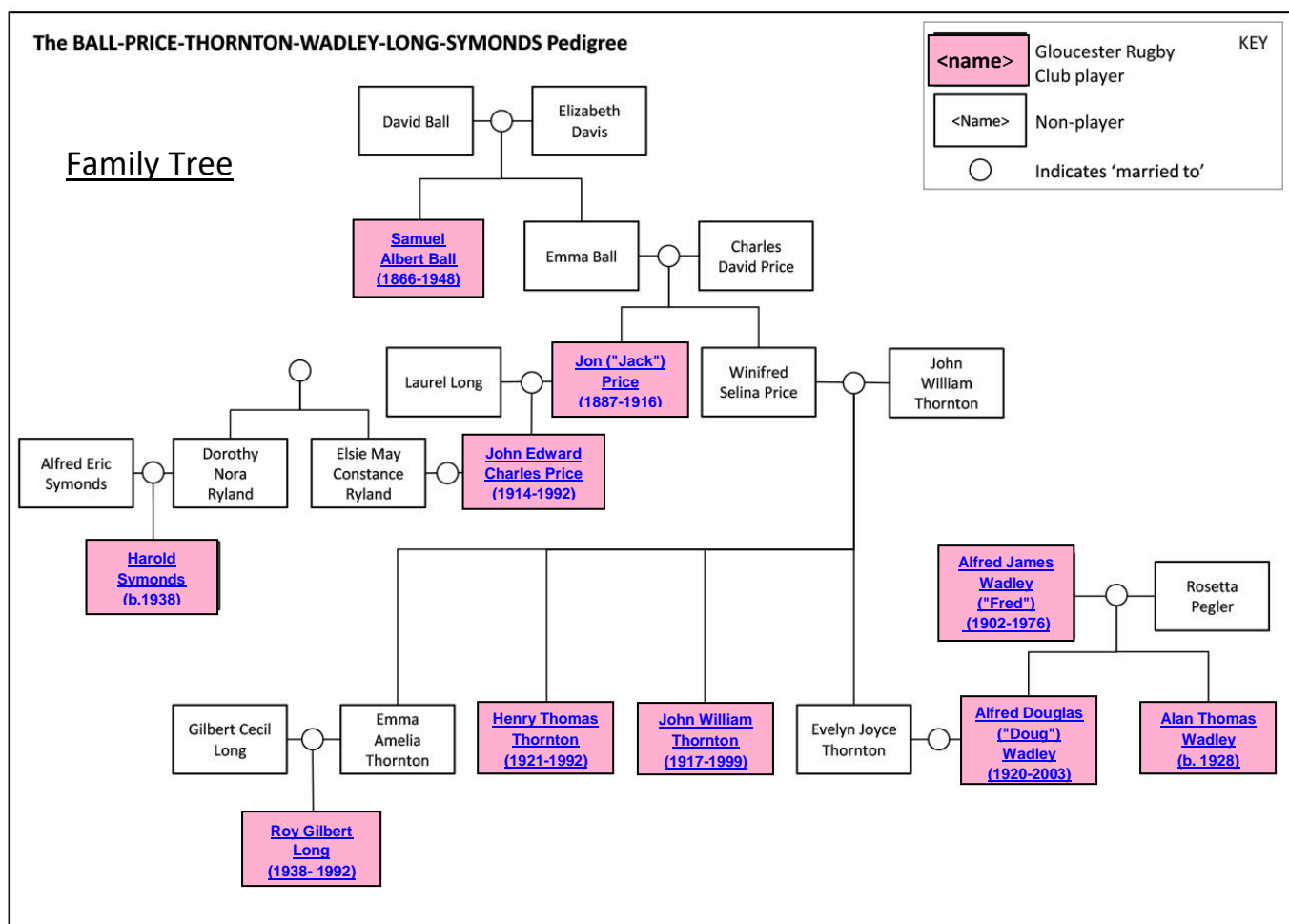


**EXTENDED FAMILIES: The BALL, PRICE, THORNTON, LONG, WADLEY and SYMONDS Greater Family:** The relationships based on marriage between the families of [Samuel Albert Ball](#), father and son [John \('Jack'\) Price](#) and [John Edward Charles \('Jack'\) Price](#), brothers [Henry Thomas Thornton](#) and [John \('Johnny'\) William Thornton](#), [Royston \('Roy'\) Gilbert Long](#) and the father and sons [Alfred \('Fred'\) James Wadley](#), [Alfred Douglas \('Doug'\) Wadley](#) and [Alan Thomas Wadley](#), and [Harold \('Hal'\) Symonds](#)



[Go to Family Tree](#)

[Go to top of page](#)

[Go to Families homepage](#)

### The BALL Family – Samuel Albert Ball

**Samuel Albert Ball** was born in Gloucester in 1866 and baptised on 20 May 1866 at St Nicholas Church. He was the son of David Ball (1831-1892), a Sawmill Labourer and Elizabeth Ball (née Davis) (1830-1915). He was the second youngest of seven children. His family lived variously at Westgate Street, Forty Feet Road and Albion Street all in Gloucester. His only sister Emma Ball (1856-1905) married Charles David Price, and is the mother of [John \('Jack'\) Price](#); Samuel is his uncle. Samuel was employed as a Match Cutter and Wood Sawyer and on 4 May 1898 married Sarah Ann Ellis and the couple had two children. Samuel as a half-back played 128 times for the Gloucester First XV between 1886 and 1892 and scored 20 tries. He was also awarded 15 Gloucestershire County caps. After retiring as a player he served as a local referee and on the Gloucestershire Selection Committee, Samuel died at Calton Road, Gloucester on 17 January 1914 aged 46 years He was buried at Gloucester Cemetery with the rugby club sending a floral tribute in the form of goal posts tied in the Gloucester colours. His wife, Sarah died in 1948 aged 79 years.

[Go to Family Tree](#)

[Go to top of page](#)

[Go to Families homepage](#)

## The PRICE Family, father and son John ('Jack') Price and John Edward Charles ('Jack') Price

**John ('Jack') Price** was born in Gloucester on 28 June 1887, the son of Charles David Price (1860-1938) and Emma Price (née Ball) (1856-1907); Emma was the sister of [Samuel Albert Ball](#). Jack was one of seven children; his sister Winfred Selina Price married John William Thornton whose sons and hence Jack's nephews, were [John William Thornton](#) and [Henry Thomas Thornton](#). The family lived variously at Westgate Street and Philip Street, Gloucester. Jack had worked at the Morelands Match Factory before joining the Council as a Mason's Labourer. On the 27 September 1913 he married Laurel Kean Long. The couple had one son, [John Edward Charles \('Jack'\) Price](#). **Jack as a forward played 12 times for the Gloucester Club, 2 of which were for the First XV in the 1909-10 season.** In 1914 after the declaration of war he enlisted in the 5<sup>th</sup> Battalion, Gloucestershire Regiment but was immediately transferred to the Worcestershire Regiment. On the 3 July 1916 the 10<sup>th</sup> Battalion, Worcestershire Regiment had been brought up to the front line to attack the fortified village of La Boisselle on the Somme. Jack died in that attack and his body was never recovered; [Henry Collins](#) also in the Worcestershire Regiment suffered the same fate. Jack is commemorated on the Thiepval Memorial to the Missing of the Somme 1916; he was 30 years old. His wife, Laurel, died on 23 December 1947 aged 70 years.

[Go to Family Tree](#)

[Go to top of page](#)

[Go to Families homepage](#)

**John Edward Charles ('Jack') Price** was born in Gloucester on 9 April 1914, the son of [John \('Jack'\) Price](#) and Laurel Price (née Long). In 1939 Jack married Elsie May Constance Ryland and together they had two children. His mother's sister, Dorothy Nora Ryland, married Alfred Symonds and would become the parents of [Harold \('Hal'\) Symonds](#), Jack's nephew. **Although Jack was a Millwright, and despite not working there, he played as a stand-off for the Fielding and Platt (Atlas Works) rugby club. The club had close ties to Kingsholm and as such players were regularly supplied to cover for injuries at the senior club. Jack played for United on several occasions but particularly in the 1936-37 season when he turned out five times, one of which was at Kingsholm.** Jack died at Gloucester on 23 October 1994 aged 80 years; his wife, Elsie, had died two years previously in 1992 aged 80 years.

[Go to Family Tree](#)

[Go to top of page](#)

[Go to Families homepage](#)

## The THORNTON Family, brothers John ('Johnny') William Thornton and Henry Thomas Thornton

The brothers were the sons of John William Thornton (1890-1965) from Redditch, Worcestershire and Winifred Selina Thornton (née Price) (1888-1989) from Gloucester; Winifred was the sister of [John \('Jack'\) Price](#). The couple married in 1912 and together they had seven children.

**John ('Johnny') William Thornton** was born in Gloucester on 17 March 1917 and was one of seven children. His brother [Henry Thomas Thornton](#) **would also play for Gloucester**, while one of his sisters, Emma Thornton would marry Gilbert Long and their son [Roy Long](#) **would become a Gloucester player**. Another sister Evelyn Thornton would marry [Alfred Douglas \('Doug'\) Wadley](#), the son of [Fred Wadley](#). Hence [Roy Long](#) was his nephew, [Doug Wadley](#) his brother-in-law and [Fred Wadley](#) his brother-in-law's father. In 1939 the family, Johnny's mother and father, sister Gladys and her husband George Win were living at 66 Moor Street, while four doors away lived Emma, her husband Gilbert Long and their one year old son [Roy Long](#). **Johnny as a backrow forward played 55 times for the Gloucester First XV between 1938 and 1949, scoring 5 tries. He was awarded 7 Gloucestershire County caps and played for England in three of the Victory Internationals in 1946. On at least one occasion Johnny and his brother Henry played together in the back row for the Gloucester First XV.** Johnny and his brother [Henry Thomas Thornton](#) served with the RAF in the Second World War. On 13 February 1943 Johnny who was serving as a Leading Aircraftman (LAC) married Betty Joyce Langford at St Catharine's Church, Gloucester; [Roy Long](#) then five years old acted as a page boy and was dressed in the uniform of an RAF Sergeant Pilot. The couple now moved to Armscroft Road, Barnwood and

together had three children. Johnny died on 22 September 1992 aged 75 years; at the time of his death he was living in Cleeve Road, Gotherington, Cheltenham. His wife, Betty died seven years later in 1999 aged 78 years.

[Go to Family Tree](#)

[Go to top of page](#)

[Go to Families homepage](#)

**Henry Thomas Thornton** was born in Gloucester on 20 January 1921 and was one of seven children. His brother [John \('Johnny'\) William Thornton](#) also played for Gloucester, while one of his sisters, Emma Thornton would marry Gilbert Long and their son [Roy Long](#) would become a Gloucester player. Another sister Evelyn Thornton would marry [Alfred Douglas \('Doug'\) Wadley](#), the son of [Fred Wadley](#). Hence [Roy Long](#) was his nephew, [Doug Wadley](#) his brother-in-law and [Fred Wadley](#) his brother-in-law's father. Henry never married. **Henry as a backrow forward played 5 times for the Gloucesters First XV between 1946 and 1947 as well as making numerous appearances for the United XV. On at least one occasion Henry and his brother Johnny played together in the back row for the Gloucester First XV. Henry was described by the Citizen as a "weighty forward".** During the Second World War Henry and his brother [Johnny Thornton](#) both served with the RAF. Henry like his brother, Johnny, was a Leading Aircraftman (LAC) (service number 614752) with 62 Squadron; He was later promoted to Corporal. **He represented the RAF at rugby during the war.** However Henry was taken prisoner by the Japanese and was incarcerated as a Prisoner of War at Hakodate Camp, Java from 20 March 1942 until 2 September 1945. Whilst in the camp he met a school boy friend LAC W. Gwilliam from their days at Hatherley Road School. They were together for nine months before being separated, only to be re-united in 1945 when they returned, a few days apart, to Gloucester; the *Citizen* photographed the two returnees to celebrate their freedom. Henry died on 17 March 1992 at Blenheim Road, Gloucester aged 71 years.

[Go to Family Tree](#)

[Go to top of page](#)

[Go to Families homepage](#)

#### The LONG Family – Royston ('Roy') Gilbert Long

**Royston ('Roy') Gilbert Long** was born on 26 January 1938 at Gloucester, the only child of Gilbert Cecil Long (1913-1971) and Emma Amelia Long (née Thornton) (1915-1999); Emma was the sister of [John \('Johnny'\) William Thornton](#) and [Henry Thomas Thornton](#) who in consequence were Roy's uncles. In 1939 Roy's family were living at 70 Moor Street, four doors away from the Thornton Family at number 66. Roy did his National Service in the RAF and in 1960 he married Diana ('Di') Langston at Gloucester and the couple had two children; in 1939 Di lived in Guinea Street, Gloucester next door to **Fred Cornelius Bloxsome** who had made 31 appearances for the Gloucester First XV between 1906 and 1914 and fought with the Gloucestershire Regiment in the Great War. **Roy a second row forward played for Gloucester Old Boys and Old Cryptians before joining Gloucester where between 1956 and 1969 he made 339 appearances for the Gloucester First XV scoring 12 tries. He was also awarded 12 Gloucestershire County caps.** Roy died on 28 February 1992 aged 54 years after a long illness; he was survived by his wife, Di. There is a [detailed profile of Roy Long](#) in the People/Player Profiles section of this website as well as [an interview with his wife, Di](#), in the Recordings/Audio Recordings/Heritage Team Interviews of this website.

[Go to Family Tree](#)

[Go to top of page](#)

[Go to Families homepage](#)

#### The WADLEY Family, father and two sons Alfred James Wadley, Alfred Douglas Wadley and Alan Thomas Wadley

**Alfred ('Fred' senior) James Wadley** was born on 28 August 1902 in Gloucester the son of Alfred Charles Wadley (1879-1954) and Jane Elizabeth Wadley (née Smith) (1880-1928); the couple married in 1901. However in 1930 Fred's father re-married, after the death of Fred's mother, to Florence May Wadley (née Goscombe), the

widow of William Thomas Wadley (no relation). Fred was one of seven children and in 1911 the family were living at 3 Windmill Cottages, Derby Road, Gloucester. Aged 19 years he married Rosetta Elizabeth Pegler at Gloucester in 1921. The couple had three children which included [Alfred Douglas \('Doug'\) Wadley](#) and [Alan Thomas Wadley](#). By 1939 Fred along with his family and his wife's parents, Harry and Mary Pegler, lived at 77 Linden Road, Gloucester, while Fred was employed as Wagon Repairer and Vehicle Builder. Fred as a front row forward appeared 287 times for the Gloucester First XV scoring 22 tries between 1927 and 1935. He was also awarded 22 Gloucestershire County caps. Fred died in Gloucester in 1976 aged 74 years. His wife, Rosetta, died in 1990 aged 90 years. There is a detailed [profile Fred Wadley](#) in the People/Player Profiles section of this website.

[Go to Family Tree](#)

[Go to top of page](#)

[Go to Families homepage](#)

**Alfred Douglas ('Doug') Wadley** was born on 11 August 1920 in Gloucester, the son of [Alfred \('Fred'\) James Wadley](#) and Rosetta Elizabeth Wadley (née Pegler). Doug was one of three children, and was the brother of [Alan Thomas Wadley](#) who also played for Gloucester. In 1932 Doug was awarded a free place to attend Sir Thomas Rich's School. In June 1947 he married Evelyn Joyce Thornton at St James Church, Gloucester; the couple had one daughter. Evelyn was the sister of [John \('Johnny'\) William Thornton](#) and [Henry Thomas Thornton](#) who were Doug's brothers-in-law. This also meant that Doug was the uncle of [Roy Long](#). During and after the Second World War, Doug served in the RAF. Following in his father's footsteps Doug played in the front row and had two games for the Gloucester First XV, one in 1941 and the other in 1946 although he played frequently for Gloucester United; in the 1946-47 season Doug along with his brother [Alan Wadley](#) were described as part of the "...hard-working nucleus..." of the pack. However he is best remembered as the Club Treasurer/Secretary between 1963 and 1995. He died in 2003 whilst living in Belmont Avenue, Gloucester. There is a [detailed profile Doug Wadley](#) in the People/Administrators section of this website.

[Go to Family Tree](#)

[Go to top of page](#)

[Go to Families homepage](#)

**Alan Thomas Wadley** was born in 1928 in Gloucester, the son of [Alfred \('Fred'\) James Wadley](#) and Rosetta Elizabeth Wadley (née Pegler). He was one of three children and was the brother of [Alfred Douglas \('Doug'\) Wadley](#) who also played for Gloucester. In 1950 Alan married Joyce W. Harris and the couple lived in Western Road, Cheltenham. Alan who played in various positions in the forwards, in all three rows, appeared for the Gloucester First XV in 56 matches between 1946 and 1954; he scored 1 try. Alan and his brother [Doug Wadley](#) played together for the Gloucester United on several occasions where they were described as part of the "...hard-working nucleus..." of the pack in the 1946-1947 season. Alan served as a Police Officer as in the early 1950s Gloucester regularly had an all-police front row of Alan, [Cyril Thomas](#) and [Jack Watkins](#).

[Go to Family Tree](#)

[Go to top of page](#)

[Go to Families homepage](#)

### **The SYMONDS Family – Harold ('Hal') Symonds**

**Harold ('Hal') Symonds** was born on 3 September 1938 at Gloucester, the son of Alfred Eric Symonds (1914-1999) and Dorothy Nora Symonds (née Ryland) (1916-1991); the couple had two children. Hal's mother, Dorothy, was the sister of Elsie May Constance Ryland who in 1939 married [John Edward Charles Price](#), the son of [John \('Jack'\) Price](#). [John Price](#) the younger was therefore Hal's uncle. In November 1964 Hal married Shirley Anne Ruston who was born in Stroud in 1936. Hal a back row/second row forward appeared 73 times for the Gloucesters First XV between 1959 and 1968, scoring 13 tries. He was awarded 2 Gloucestershire County caps. On 51 occasions for the Gloucester First XV, Hal played with [Roy Long](#) who he described as his "...second row partner..."; [Roy Long](#) is, by marriage, a distant relative of Hal. Sadly Hal's wife, Shirley, passed away in 2017. Hal now lives near the banks of the

Severn at Minsterworth in the Forest of Dean. There is a [detailed profile Hal Symonds](#) in the People/Player Profiles section of this website.

[Go to Family Tree](#)

[Go to top of page](#)

[Go to Families homepage](#)

-----//-----