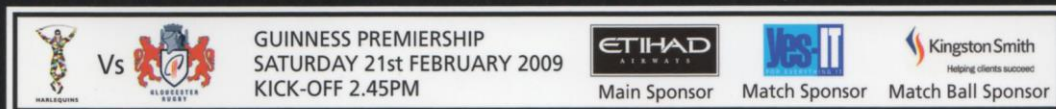


YOUR TEAM, YOUR...

QUINS



OFFICIAL MATCHDAY MAGAZINE ♦ ISSUE 12 ♦ £3.00 ♦ SEASON 2008/2009

More than 10
years of proud
support – Rawlins
Davy PLC sponsors
of Dean Richards



DEAN RICHARDS

**“THIS SEASON
THEY WILL BE
DESPERATE
TO GET SOME
SILVERWARE IN
THE CABINET”**

Today we face Guinness Premiership leaders, Gloucester, and like all our previous encounters, it will no doubt be a tight affair. The last few encounters have been won in controversial circumstances, with the referee deciding the result on two occasions.

Gloucester are a quality side, and will be strengthened by the return of players from International duty in the 6 Nations, such as Alasdair Strokosch and Alasdair Dickinson from Scotland, and Gareth Cooper from Wales. They will still be missing the experience of Mike Tindall, who remains on England duty, along with our own England players, Nick Easter and Danny Care.

One player which everyone will be focusing their attentions on is the New Zealander,

Carlos Spencer, who moved to Gloucester only a matter of weeks ago. With so much international experience, questions will be asked about why he left Northampton?!

You don't get to the top of the Guinness Premiership, at this point in the season, unless you are a side who consistently perform week in, week out and although Gloucester prove each season how strong a side they are, they tend to be the team which are always the bridesmaid and never the bride. This season they will be desperate to get some silverware in the cabinet.

With so many internationally capped players in the side, we will have to be on the top of our game to get the win we are looking for today.

Enjoy the game!

Dean Richards





TODAY'S VISITORS

GLOUCESTER RUGBY – THE SEASON SO FAR:

In the unique world that is Gloucester Rugby, the team that was written off and rubbished following back-to-back Heineken Cup defeats, arrive at Harlequins today top of the Guinness Premiership.

Consistency has never been Gloucester's problem. Indeed, they have finished top of the pile for the last two seasons. What they have not been able to do is transmit that ability into play-off success but momentum is suddenly beginning to shift again at Castle Grim.

Victory from the back of beyond against London Irish was full of all the things Gloucester get regularly criticised for not having: Resolve, attitude, stratospheric belief and bulging physicality levels. Combine that with another recovery job against Sale Sharks last weekend and suddenly Dean Ryan's side are believing in themselves once again.

There are signs that the likes of Gareth Delve and Greg Somerville may just be the dogs unmentionables given their last two performances. Delve's return from a long-term knee injury has given Gloucester a carrier in heavy traffic, while Somerville's mountain of knowledge and all-round expertise have been a galvanising influence.

Throw in new arrival Carlos Spencer and his box of tricks, the game-breaking qualities of James Simpson-Daniel, the running abilities of Iain Balshaw and the marksmanship of Olly Barkley and it is easy to appreciate that Gloucester are feeling pretty good about themselves again.

However, early season defeats against Leicester and Sale Sharks had left one of the most fancied sides in the country staring up from the uncomfortable position of seventh place, struggling to adapt to the new Experimental Law Variations (ELV's) and generally fumbling around for cohesion and reliability at the start of the campaign.

The close season was not so much about what happened at Gloucester, as what didn't happen. Despite finishing top of the Guinness Premiership pile again at the end of the regular 2007/2008 season, Gloucester again failed to transfer their obvious potential into a dividend during the play-offs – it was a familiar, unfulfilled ending to what threatened to be a triumphant season.

By that time, head coach Ryan had done the majority of his recruiting – a policy that included nabbing one of Bath's diamonds in Barkley – Llanelli centre Matthew Watkins and former Gloucester second row Adam Eustace – also from Stradey Park.

When he completed negotiations to bring Canterbury prop Somerville to Kingsholm, the general thought was that Gloucester's squad was stronger than last season's and well capable of challenging again this season.

But the most striking advances have been made by players already in situ. The increasingly influential Luke Narraway is maturing into a leader, while the safe as houses Olly Morgan is a year older and a year wiser and attracting the attentions of the England selectors.

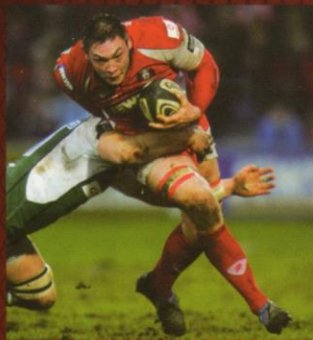
Gloucester's Premiership campaign got off to the worst possible start

with a home defeat to those Tigers – their third successive victory at Kingsholm in eight months. Tries from Geordan Murphy and Toby Flood sealed a 20-8 victory – Gloucester's only try coming from the outstanding Morgan in the first-half.

But they responded by winning for the first time ever at the Rec in league rugby in a spot of west country tribalism, unique to the people involved. They backed that up with a tense victory over Harlequins, the Premiership pace-setters, with tries from Morgan and Alasdair Strokosch before Charlie Hodgson subjected them to a withering kicking assault at Edgeley Park, as they struggled to come to terms with the ELV's. They have won games, but have not been convincing so far this season – as the Falcons will testify.

They re-grouped with a 39-23 win over Newcastle at Kingsholm, that included a bonus point and then built on that success with a 24-19 victory over Wasps in the EDF Energy Cup, with tries from Willie Walker and Lesley Vainikolo and will face the Ospreys in the semi-finals next month.

Despite bitter Heineken Cup disappointment, victories over Saracens and then back-to-back bonus point successes over Bristol and Northampton, means Gloucester make their latest journey of 2009 in good heart and shape and in the Guinness Premiership that has accelerated in recent weeks with wins over Irish and Sale, before the trip to the capital today.



GARETH DELVE

Position: Back row
Height: 1.91m
Weight: 115kg
D.O.B: 30/12/82

The Wales number eight is back in action after recovering from a ruptured ACL against South Africa in the summer.

In two appearances so far against London Irish and Sale Sharks, Delve's physicality levels, endurance and energy have been key to Gloucester's forward momentum.

Desperate to make up for lost time this season, Delve's return could have come at just the right time for Gloucester, as they search for a play-off place.



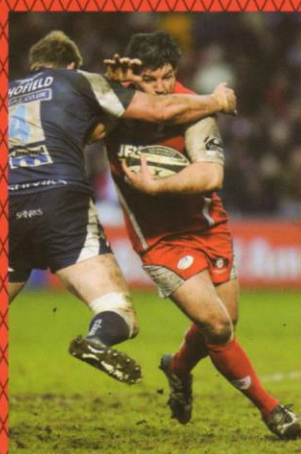
IAIN BALSCHAW

Position: Full-back/wing
Height: 1.85m
Weight: 94kg
D.O.B: 14/04/79

With five Guinness Premiership tries to his name this season, Balshaw is in outstanding form.

Able to play at either wing or full-back, his versatility, beautifully balanced running game and safety in defence has marked him down as one of Gloucester's most consistent performers this season.

His winning try against Irish three weeks ago was the 50th of his Premiership career and his threat on turn-over ball makes him one of the most threatening outside backs in the business.

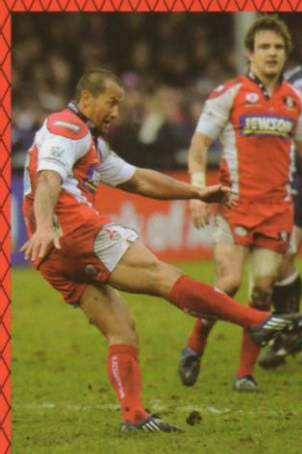


GREG SOMERVILLE

Position: Prop
Height: 1.86m
Weight: 115kg
D.O.B: 28/11/77

Despite suffering a detached retina in his left eye on his first Guinness Premiership appearance against London Irish in December, the most capped prop in All Black history returned to action after only eight weeks and has already stamped his quality on Gloucester's forward effort.

The former Canterbury star is renowned for his excellent scrummaging, outstanding organisational skills and experience. A key asset in Gloucester's charge towards the end of the season.



CARLOS SPENCER

Position: Fly-half
Height: 1.84m
Weight: 98kg
D.O.B: 08/06/82

Signed a fortnight ago from Northampton Saints on a 17-month contract, Spencer made his debut against Sale last weekend in the stand-off position and immediately showed his quality.

He won 33 caps for the All Blacks, and his footballing qualities, awareness and subtleties could be exactly what Gloucester need towards the run in towards the end of the season.



GLOUCESTER RUGBY

FOUNDED: 1873

GROUND: KINGSHOLM

CAPACITY: 16,500

HEAD COACH: DEAN RYAN

CAPTAIN: MIKE TINDALL

LEAGUE: GUINNESS PREMIERSHIP

POSITION: 1ST

WEBSITE: WWW.GLOUCESTERRUGBY.CO.UK

ANTHONY ALLEN

Position: Centre
D.O.B: 01.09.86
Height: 1.80m
Weight: 92kg
Honours: England

OLIVIER AZAM

Position: Hooker
D.O.B: 24.10.74
Height: 1.85m
Weight: 120kg
Honours: France

OLLY BARKLEY

Position: Centre/
stand-off
D.O.B: 28.11.81
Height: 1.78m
Weight: 92kg
Honours: England

MARCO BORTOLAMI

Position: Lock
D.O.B: 12.06.80
Height: 1.95m
Weight: 112kg
Honours: Italy

ALEX BROWN

Position: Lock
D.O.B: 17.05.79
Height: 2.01m
Weight: 116kg
Honours: England

PETER BUXTON

Position: Back row
D.O.B: 21.08.78
Height: 1.92m
Weight: 115kg

ALASDAIR DICKINSON

Position: Prop
D.O.B: 11.09.83
Height: 1.84m
Weight: 112kg
Honours: Scotland

ADAM EUSTACE

Position: Lock
D.O.B: 09.01.79
Height: 1.95m
Weight: 107kg

JAMES FORRESTER

Position: Back row
D.O.B: 09.02.81
Height: 1.95m
Weight: 110kg
Honours: England

JACK FORSTER

Position: Prop
D.O.B: 19.03.87
Height: 1.86m
Weight: 120kg

MARK FOSTER

Position: Wing
D.O.B: 02.09.83
Height: 1.83m
Weight: 100kg

ANDREW HAZELL

Position: Back row
D.O.B: 25.04.78
Height: 1.83m
Weight: 95kg
Honours: England

WILL JAMES

Position: Lock
D.O.B: 22.12.76
Height: 1.99m
Weight: 120kg
Honours: Wales

RYAN LAMB

Position: Stand-off
D.O.B: 18.05.86
Height: 1.76m
Weight: 85kg

RORY LAWSON

Position: Scrum-half
D.O.B: 12.03.81
Height: 1.73m
Weight: 85kg
Honours: Scotland

DAVE LEWIS

Position: Scrum-half
D.O.B: 29.04.89
Height: 1.70m
Weight: 80kg

ROSS MCMILLAN

Position: Hooker
D.O.B: 02.06.87
Height: 1.85m
Weight: 104kg

CARLOS NIETO

Position: Prop
D.O.B: 28.04.76
Height: 1.86m
Weight: 110kg
Honours: Italy

DAN NORTON

Position: Wing
D.O.B: 22.03.88
Height: 1.79m
Weight: 80kg

JEREMY PAUL

Position: Hooker
D.O.B: 14.03.77
Height: 1.84m
Weight: 16st 4lb
Honours: Australia

AKAPUSI QERA

Position: Back row
D.O.B: 24.04.84
Height: 1.94m
Weight: 103kg
Honours: Fiji

CHARLIE SHARPLES

Position: Wing
D.O.B: 17.08.89
Height: 1.84m
Weight: 93kg

JAMES SIMPSON-DANIEL

Position: Wing
D.O.B: 30.05.82
Height: 1.82m
Weight: 92kg
Honours: England

ALASDAIR STOKOSCH

Position: Back row
D.O.B: 21.02.83
Height: 1.91m
Weight: 107kg
Honours: Scotland

ANDY TITTERRELL

Position: Hooker
D.O.B: 10.01.81
Height: 1.81m
Weight: 94kg
Honours: England/Lions

HENRY TRINDER

Position: Centre
D.O.B: 14.04.89
Height: 1.83m
Weight: 85kg

MATTHEW WATKINS

Position: Centre
D.O.B: 02.09.78
Height: 1.83m
Weight: 92kg
Honours: Wales

DAN WILLIAMS

Position: Number eight
D.O.B: 01.02.89
Height: 1.97m
Weight: 104kg

NICK WOOD

Position: Prop
D.O.B: 09.01.83
Height: 1.86m
Weight: 112kg

DAVE YOUNG

Position: Prop
D.O.B: 18.12.85
Height: 1.85m
Weight: 117kg



HARLEQUINS



GLOUCESTER
RUGBY

HARLEQUINS Vs GLOUCESTER

Guinness Premiership
Round 14

Saturday 21st February
Kick-Off 2.45pm

Referee: Dave Pearson
Touch Judge: Roy Maybank
Touch Judge: Kevin Stewart
Fourth Official: Tom Moses

NOTES	HARLEQUINS	Vs	GLOUCESTER	NOTES
	Mike Brown	15: Full-Back	Iain Balshaw	
	David Strettle	14: Wing	Mark Foster	
	Gonzalo Tiesi	13: Centre	Matthew Watkins	
	Jordan Turner-Hall	12: Centre	Olly Barkley	
	Tom Williams	11: Wing	James Simpson-Daniel	
	Nick Evans	10: Fly-Half	Carlos Spencer	
	Andy Gomarsall	9: Scrum-Half	Rory Lawson	
	Ceri Jones	1: Prop	Nick Wood	
	Gary Botha	2: Hooker	Olivier Azam	
	Mike Ross	3: Prop	Greg Somerville	
	Ollie Kohn	4: Lock	Marco Bortolami	
	George Robson	5: Lock	Alex Brown	
	Chris Robshaw	6: Flanker	Luke Narraway (c)	
	Will Skinner (c)	7: Flanker	Andy Hazell	
	Tom Guest	8	Gareth Delve	
Replacements				
	Aston Croall	16	Andy Titterrell	
	Mark Lambert	17	Alasdair Dickinson	
	Jim Evans	18	Adam Eustace	
	Neil McMillan	19	Alasdair Strokosch	
	Junior Poluleuligaga	20	Ryan Lamb	
	Chris Malone	21	Anthony Allen	
	Ugo Monye	22	Henry Trinder	

5th	League Position	1st
13	Matches Played	14
7	Matches Won	10
5	Matches Lost	4
1	Matches Drawn	0
35	League Points	45

MATCH STATS

HARLEQUINS

GLOUCESTER

	TRIES	
	CONVERSIONS	
	PENALTIES	
	DROP GOALS	
	FINAL SCORE	



Main Sponsor



TODAY'S TEAMS