

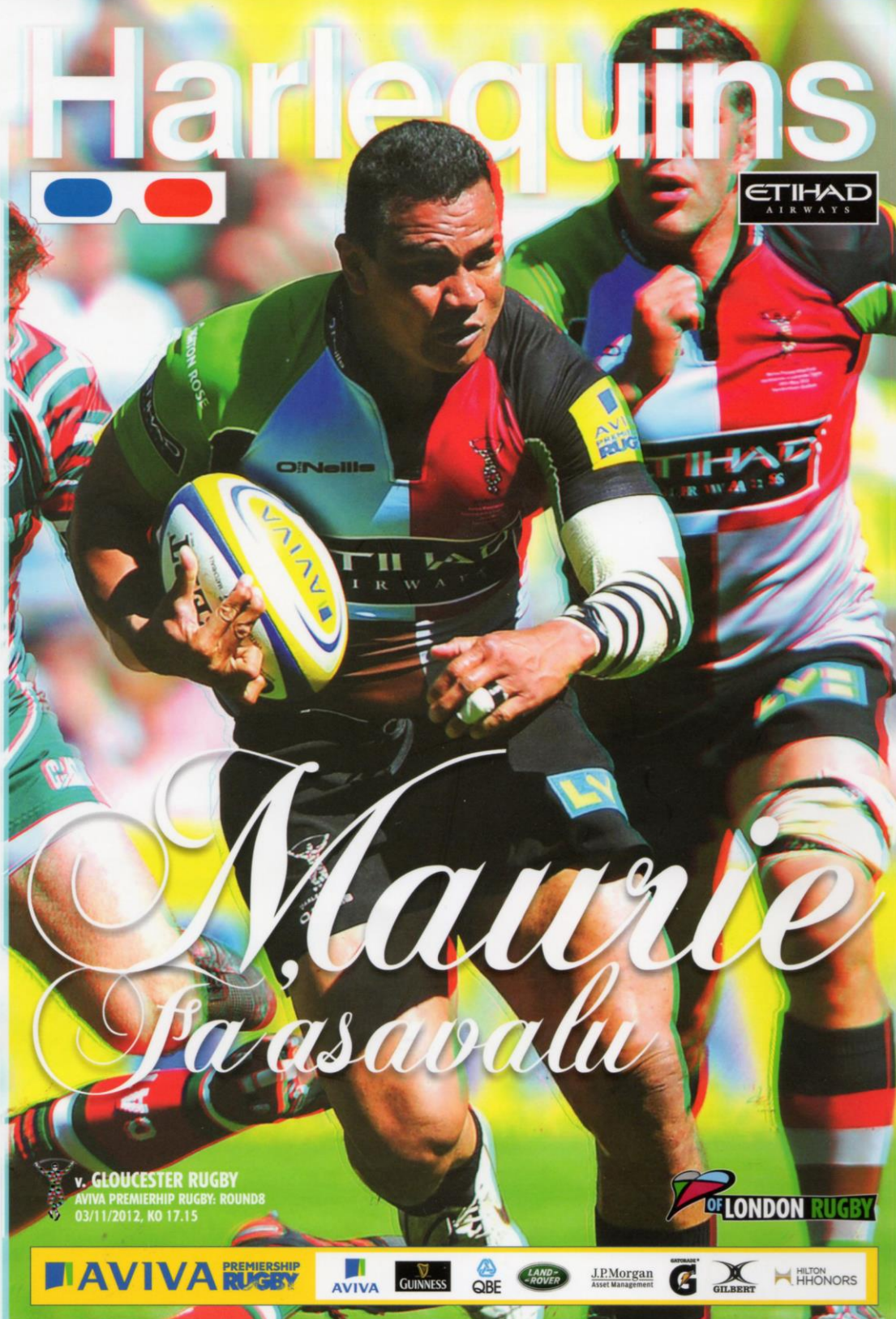
ISSUE 05 // 2012-13 Official Matchday Magazine

// £3

Harlequins



ETIHAD
AIRWAYS



*Maurie
Faasavalu*

v. GLOUCESTER RUGBY
AVIVA PREMIERSHIP RUGBY: ROUNDS
03/11/2012, KO 17.15

OF LONDON RUGBY

AVIVA PREMIERSHIP RUGBY

AVIVA

GUINNESS

QBE

LAND-ROVER

J.P.Morgan
Asset Management

GILBERT

HILTON
HONORS



GLOUCESTER RUGBY



FOUNDED 1873
GROUND Kingsholm
CAPACITY 16,500
DIR. OF RUGBY Nigel Davies
CAPTAIN Jim Hamilton




**GLOUCESTER
RUGBY**

2011/12 LEAGUE POSITION

9th

OFFICIAL WEBSITE

www.gloucesterrugby.co.uk

 [@gloucesterrugby](https://twitter.com/gloucesterrugby)

AFTER a close season of upheaval at Kingsholm, Gloucester Rugby's 2012-13 season is off to a promising start.

Following what can best be described as a disappointing end to 2011-12, the club was rocked by the sudden, and unexpected, departure of Head Coach Bryan Redpath followed

his back room staff with only Carl Hogg remaining from last season.

In came Paul Moriarty as Defence Coach, Tony Windo as Scrum Coach and Mike Tindall was offered a new contract, which saw the World Cup winner take his first steps into the world of coaching as well as continuing to play.

a new look side and no-one was under any illusions as the season kicked off. This was a long term project and it would take time.

The Aviva Premiership though is obviously a tough place to learn and develop, but the Cherry and Whites are making a good fist of it so far.

A slow start in the season opener



by the tragic passing of John Brain.

The Gloucester Rugby board needed to act quickly and identify a new figurehead to lead the club into a new era.

That man was Nigel Davies, who was appointed Director of Rugby in early June and the former Scarlets supremo had to act fast to assemble

There was also the small matter of integrating a number of new signings into the squad and restoring confidence after 2011-12 finished with a series of defeats.

It's a cliché, but everyone at the club started out taking things one game at a time.

It was a new look coaching set up,

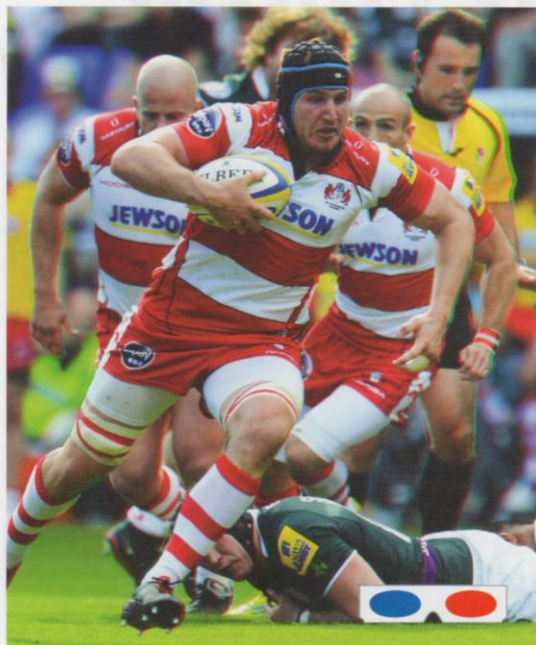
at home to Northampton meant that there was just too much ground to claw back and a losing bonus point was the only reward.

That, however, was the last time that the Cherry and Whites tasted defeat as they have battled to some memorable victories. The wins may not always have been achieved in

style, but, at the end of the day, a win's a win.

A rare victory at the Madejski Stadium got Gloucester off and running in the victory column, followed by a tense draw at Sixways against Worcester.

Gloucester took another step forward with an exciting 29-22 victory over London Wasps to chalk up their first home win of the season and this was backed up by another



win on the road against London Welsh.

The first round of Aviva Premiership fixtures came to a close with one of the sweetest wins for Gloucester fans – a home win against local rivals Bath Rugby.

It sent the team into European action on the back of a five match unbeaten run and this was extended by Amlin Challenge Cup wins over Mont de Marsan and Bordeaux-Begles.

One criticism had been levelled at Nigel Davies' side at this point – that they hadn't beaten a side in the top four of the Premiership.

This was duly remedied in fine style last weekend as Gloucester outlasted the Leicester Tigers, taking the spoils in a 27-21 thriller.

It sets up this afternoon beautifully. First against third – a real top of the table clash.

Quins are current champions and lead the way once again.

How Gloucester fare this afternoon will establish how the development of this new look Gloucester team is progressing.

GLoucester RUGBY

CAPTAIN

JIM HAMILTON
SECOND ROW



Born in Swindon, 'Big Jim' started his professional career with the Leicester Academy before moving to Edinburgh to enhance his international career with Scotland.

The 6ft 8in powerhouse, who weighs in at 19st 8lb, has now been capped 39 times. Jim won selection for the Rugby World Cup 2011 in New Zealand and, shortly before flying out, signed a new contract with Gloucester Rugby.

In his first season, Jim rapidly became a crowd favourite and played a key role in Gloucester's successful LV= Cup campaign.

He is now closing in on 50 first team appearances for the club and is deeply proud to skipper the team this season.



NIGEL DAVIES

DIRECTOR OF RUGBY



Nigel Davies joined Gloucester Rugby as Director of Rugby in June 2012, having been the Head Coach at Welsh region the Scarlets since June 2008.

The Llanelli born and bred centre won 29 caps for his country between 1988 and 1997, before joining the Welsh national coaching set up under Gareth Jenkins. Davies is one of the very few Welsh players to have both coached and captained his country.

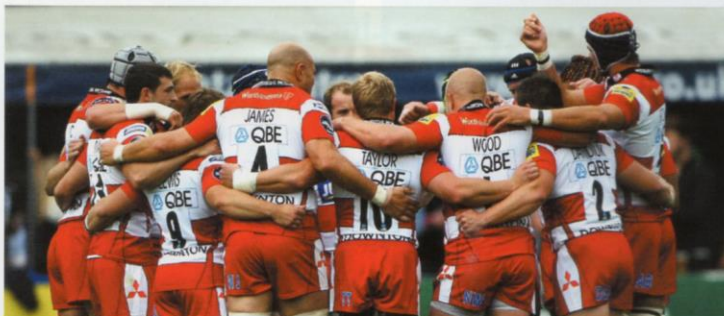
He has been associated with top-flight rugby for more than 28 years as a player and then coach, and has been tasked with returning Gloucester to the pinnacle of the English club game.

GLOUCESTER RUGBY

PLAYING SQUAD 2012/13



SURNAME	FIRST NAME	DOB	AGE	HEIGHT	WEIGHT	HONOURS
Britton	Koree	04/03/92	20	5' 11"	16 st 11 lb	
Brown	Alex	17/05/79	33	6' 7"	18 st 3 lb	🏴󠁧󠁢󠁥󠁮󠁧󠁿 (3)
Burns	Freddie	13/05/90	22	6' 1"	12 st 8 lb	
Buxton	Peter	21/08/78	34	6' 4"	18 st 1 lb	
Chistolini	Dario	14/09/88	24	5' 11"	17 st 3 lb	
Cook	Rob	07/07/84	28	6' 0"	14 st 0 lb	
Cowan	Jimmy	06/03/82	30	6' 1"	14 st 6 lb	🏴󠁧󠁢󠁥󠁮󠁧󠁿 (51)
Cox	Matt	06/03/88	24	6' 3"	15 st 5 lb	
d'Apice	Tommaso	30/06/88	24	6' 0"	16 st 5 lb	🇮🇹 (10)
Dawidiuk	Darren	21/09/87	25	5' 11"	14 st 12 lb	
Edmonds	Huia	20/10/81	30	6' 0"	16 st 3 lb	🇺🇸 (4)
Evans	Gareth	19/09/91	21	6' 3"	17 st 4 lb	
Hamilton	Jim	17/11/82	29	6' 8"	19 st 7 lb	🇸🇬 (39)
Harden	Rupert	09/05/85	27	6' 3"	18 st 7 lb	
Hazell	Andy	25/04/78	34	6' 0"	14 st 12 lb	🏴󠁧󠁢󠁥󠁮󠁧󠁿 (7)
James	Will	22/12/76	35	6' 6"	18 st 12 lb	🇪🇸 (4)
Kalamafoni	Sione	18/05/88	24	6' 5"	17 st 9 lb	🇳🇷 (18)
Knight	Shaun	19/02/90	22	6' 0"	17 st 7 lb	
Lewis	Dave	29/04/89	23	5' 7"	12 st 8 lb	
Locke	Drew	11/09/86	26	5' 11"	13 st 13 lb	
May	Jonny	01/04/90	22	6' 1"	14 st 2 lb	
Mills	Ryan	30/05/92	20	6' 0"	14 st 11 lb	
Molenaar	Tim	19/02/81	31	6' 2"	17 st 6 lb	
Monahan	Shane	28/04/87	25	6' 2"	16 st 3 lb	
Morgan	Ben	18/02/89	23	6' 3"	18 st 3 lb	🏴󠁧󠁢󠁥󠁮󠁧󠁿 (7)
Morgan	Olly	03/11/85	26	6' 2"	14 st 10 lb	🏴󠁧󠁢󠁥󠁮󠁧󠁿 (2)
Murphy	Dan	27/10/85	26	6' 3"	18 st 0 lb	
Qera	Akapusi	24/04/84	28	6' 4"	16 st 2 lb	🇳🇷 (26)
Robson	Dan	14/03/92	20	5' 7"	12 st 1 lb	
Savage	Tom	18/04/89	23	6' 5"	18 st 1 lb	
Sharples	Charlie	17/08/89	23	6' 0"	14 st 8 lb	🏴󠁧󠁢󠁥󠁮󠁧󠁿 (2)
Simpson-Daniel	James	30/05/82	30	6' 0"	14 st 6 lb	🏴󠁧󠁢󠁥󠁮󠁧󠁿 (10)
Taylor	Tim	04/10/82	30	6' 0"	13 st 12 lb	
Thomas	Martyn	24/04/87	25	5' 11"	12 st 10 lb	
Thomas	Yann	16/04/90	22	6' 2"	18 st 12 lb	
Tindall	Mike	18/10/78	33	6' 2"	16 st 0 lb	🏴󠁧󠁢󠁥󠁮󠁧󠁿 (75)
Trinder	Henry	14/04/89	23	6' 0"	13 st 5 lb	
Twelvetrees	Billy	15/11/88	23	6' 3"	15 st 10 lb	
Wood	Nick	09/01/83	29	6' 1"	17 st 8 lb	



Images courtesy of Martin Bennett/Gloucester Rugby

opta

PREMIERSHIP
RUGBY

OFFICIAL
DATA PROVIDER

Harlequins v Gloucester

Date: 3th November
Kick Off: 17:15

opta
we live sport

Top Performers

Total Metres

Mike Brown	581
Ugo Monye	384
Nick Easter	247

Total Carries

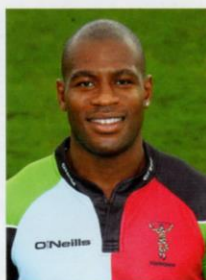
Nick Easter	85
Mike Brown	81
Chris Robshaw	65

Total Tackles

Chris Robshaw	77
Nick Easter	51
Joe Gray	44

Lineouts Won

George Robson	20
Nick Easter	14
Charlie Matthews	10



Ugo Monye J Simpson - Daniel

63	Total Carries	36
384	Total Metres	294
23	Tackles	37
5	Missed Tackles	3
4	Tries Scored	2
5	Initial Breaks	4
4	Defenders Beaten	12
9	Turnovers Conceded	2
21	Total Passes	21

Top Performers

Total Metres

Shane Monahan	312
James Simpson-Daniel	294
Freddie Burns	293

Total Carries

Ben Morgan	62
Sione Kalamafoni	51
Billy Twelvetrees	46

Total Tackles

Ben Morgan	53
Billy Twelvetrees	52
Akapusi Qera	50

Lineouts Won

James Hamilton	18
Tom Savage	16
Will James	13

Team Stats

Scrum

41	Put Ins	57
37	Won	52
90	% Won	91
17	Pen Won	22
7	Won Opp Feed	11
16	% Opp Feed	23
6	Pen Opp Feed	8

Lineouts

90	Throw Ins	94
75	Won	77
83	% Won	82
4	Not Straight	5
8	Quick Throw	6
9	Won Opp Throw	12
12	% Stolen	14

Tries

23	Scored	14
7	No. 1st Phase	3
5	No. Own Half	5
11	No. In 1st Half	7
12	No. In Second Half	7
13	From Set Piece	6
4	From Turnover	2

Open Play

86	Av. Tackles	95
14	Av. Misses	13
114	Av. Carries	87
449	Av. Metres	369
14	Av. Def Beaten	16
13	Av. T'Over Con	12
10	Av. Pens Con	12

AVIVA PREMIERSHIP RUGBY

AVIVA

GUINNESS

QBE

LAND-ROVER

J.P.Morgan
Asset Management

GILBERT

GILBERT

HILTON
HONORS



The Last TIME WE MET



14th January 2012

Heineken Cup

ATTENDANCE: 12,772 REFEREE: George Clancy



HARLEQUINS

20

TRIES: Hopper (18), Brown (73) CONS: Evans (19, 74) PENS: Evans (12, 46)



Gloucester Rugby

14

TRY: Simpson-Daniel (29) PENS: Burns (10, 25, 53)

HEINEKEN CUP DOUBLE OVER GLOUCESTER RUGBY

Harlequins ambitions to reach the latter stages of the Heineken Cup continued following a 20-14 victory over Gloucester at The Stoop.

Tries from Matt Hopper and Mike Brown alongside ten points from the boot of Nick Evans outmatched scores from James Simpson-Daniel and Freddie Burns.

Harlequins came close to opening the scoring when seamless offloading from Brown, Hopper and Jordan Turner-Hall found Maurie Fa'asavalu who charged into the Gloucester 22. Although the attack broke down, it was a positive sign of things to come.

Despite the early threat from Harlequins, Burns put the first points on the board with a penalty, but this was quickly cancelled out by Evans just three minutes later.

It wasn't long before Evans was lining



up a conversion following Hopper's try. Tom Williams found space from a lineout and offloaded to Hopper. Ugo

Monye found space on the wing and despite his pass to Brown going to ground, the full-back flicked the ball up

for Hopper to score.

As the 20 minute mark passed, Gloucester hit back with another penalty. Burns then played a part in Gloucester's first try when he offloaded to Simpson-Daniel, the winger ran an arcing line through the Quins defence, taking his side back into a 10-11 lead.

Both fly-halves exchanged kicks after half-time and Harlequins again came

close from the restart. Monye stole a lofted drop kick and when Fa'asavalu offloaded to Tom Williams, he was denied by a forward pass.

A number of scrums followed in the Gloucester 22 before Nick Wood was shown yellow with 12 minutes remaining. Sadly, Quins could not turn pressure into points, and Care was eventually penalised for being

offside. Gloucester cleared their lines, but Harlequins' numerical advantage eventually counted. With seven minutes remaining, Sharples was unable to gather a Care grubber kick. The unfortunate bounce fell kindly for Brown to score his 11th try of the season. Evans added the extras and Harlequins kept their pool 6 dreams alive with a 20-14 win.



25th February 2012

Aviva Premiership Rugby

ATTENDANCE: 13,559 REFEREE: Dave Pearson



Gloucester Rugby

TRIES: Sharples (9), May (24), Qera (57) CON: Burns (10) PENS: Burns (1, 34, 40, 49)

29



HARLEQUINS

TRIES: Chisholm (37, 79) CONS: Evans (38, 80) PENS: Evans (13, 19, 46)

23

CHISHOLM INSPIRES A VITAL LOSING BONUS POINT FOR QUINS



An 80th minute try from Ross Chisholm and a touchline conversion from Nick Evans gifted Harlequins an important losing bonus point during their 29-23 defeat against Gloucester.

That touchline conversion from Evans also had great significance as this took his total points tally for the club past the 1,000 mark.

Tries from Gloucester's Charlie Sharples, Jonny May and Akapusi Qera and a mixed kicking display from Freddie Burns outweighed Chisholm's brace and a 13 point haul from Evans.

It was the home side that enjoyed the early pressure in the game with

a penalty and a try inside the first 10 minutes. Quins' early ill-discipline at the breakdown allowed Freddie Burns to break the deadlock.

Gloucester were dangerous going forward in the early stages of the game and from a lineout, a dummy switch in the centres resulted in Charlie Sharples crossing over.

Quins responded well and worked their way into Gloucester's 22. Nick Evans got Quins' first points on the score board from the boot.

After a second penalty kick from Evans, Gloucester's Jonny May set Kingsholm alight. The full back made

a break from halfway and slipped three tackles to score giving the hosts a 15-6 lead.

Burns added two further penalties as the half approached, but it was Harlequins that went into the break on a high.

Monye, who had been a dangerous runner all evening brought Quins into the Gloucester half and when the ball was shipped wide, Evans slotted a neat grubber kick past the defence for Chisholm to collect and score.

Both kickers exchanged early penalties in the second half before Akapusi Qera scored on the the hour. Another midfield break through the Quins line allowed Gloucester to enjoy many phases in the Quins 22. The ball was spun wide and the miss match in defence allowed the flanker to score.

Although Gloucester enjoyed late possession it was Harlequins who had the final say.

Playing in their own 22, Evans shipped the ball wide to Chisholm. The full-back charged up field, out running his opposite number May to score. Evans added the extras to secure the bonus point for Quins and took his personal points tally to 1,001.



HARLEQUINS

MIKE BROWN
TOM WILLIAMS
MATT HOPPER
TOM CASSON
SAM SMITH
NICK EVANS
KARL DICKSON
MARK LAMBERT
JOE GRAY
JAMES JOHNSTON
OLLY KOHN
GEORGE ROBSON
MAURIE FA'ASAVALU
LUKE WALLACE
NICK EASTER (C)

ROB BUCHANAN
DARRYL MARFO
WILL COLLIER
CHARLIE MATTHEWS
TOM GUEST
JORDAN BURNS
BEN BOTICA
SEB STEGMANN

THE TEAMS

10

15

14

13

12

11

10

09

01

02

03

04

05

06

07

08

16

17

18

19

20

21

22

23



GLOUCESTER RUGBY

ROB COOK
SHANE MONAHAN
MIKE TINDALL (C)
BILLY TWELVETREES
JAMES SIMPSON-DANIEL
FREDDIE BURNS
JIMMY COWAN
NICK WOOD
HUIA EDMONDS
RUPERT HARDEN
TOM SAVAGE
WILL JAMES
PETER BUXTON
AKAPUSI QERA
BEN MORGAN
KOREE BRITTON
DAN MURPHY
SHAUN KNIGHT
ELLIOTT STOOKE
MATT COX
DAN ROBSON
TIM TAYLOR
MARTYN THOMAS

THE OFFICIALS REFEREE: Wayne Barnes ASSISTANT REFEREES: Paul Dix and Robin Goodliffe 4th: Tom Moses