

GLOUCESTER
RUGBY

3^d.

FOOTBALL
CLUB

OFFICIAL

PROGRAMME

KINGSHOLM, GLOUCESTER

on

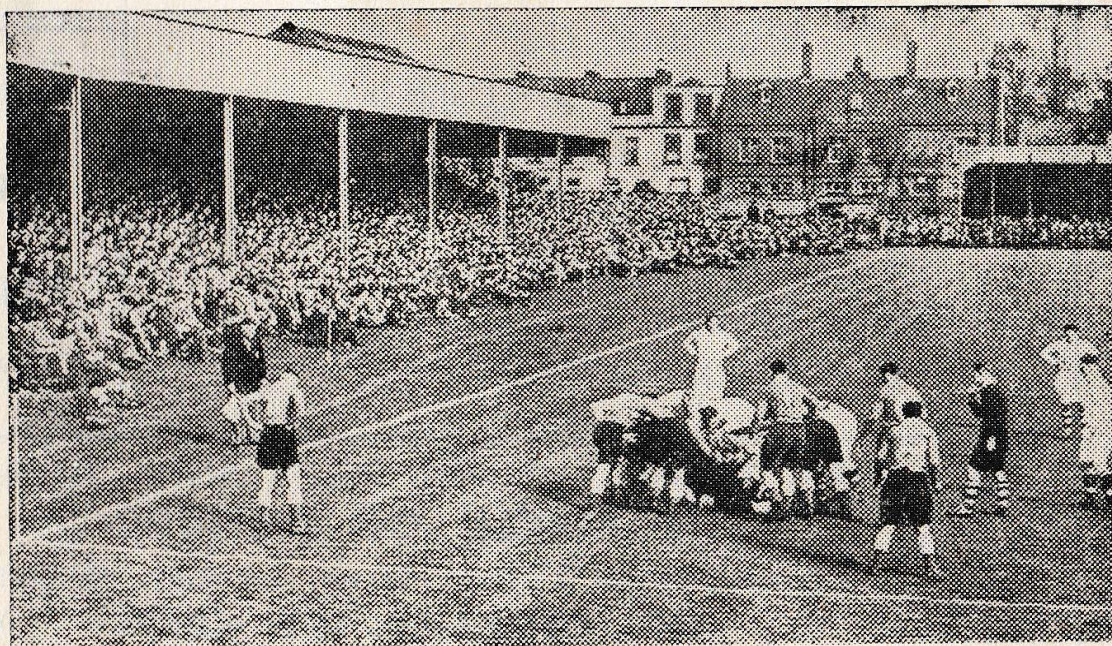
SATURDAY, SEPT. 15th, 1951.

Kick-off 3-15 p.m.

GLOUCESTER

v.

MOSELEY



"Gloucester Journal" Photograph

COMPLETE YOUR DAYS PLEASURE by Visiting
GLOUCESTER HIPPODROME

SEE BELOW

GLOUCESTER (Red and White)

Full Back—

1 Hook, W.

Three-quarters—

2 Crabtree, C. Right Wing

3 Sutton, R.

4 Syme, J. *J. HILL*

5 Taylor, J. Left Wing

Half Backs—

6 Cartmell, W. B.

7 Humphries, D.

Forwards—

8 Parry, R.

9 Thomas, C.

10 Watkins, J. (Captain)

11 Wells, H. G.

12 Hastings, G.

14 Ibbotson, D.

15 Hodge, R.

16 Hudson, G.

Monday, Sept. 17th

Gloucester

v.

Waterloo

Kick-off 6-15

Referee—

Mr. W. E. Owens

(Bristol)

Saturday, Sept. 22nd

Gloucester

v.

Neath

Kick-off 3-15

MOSELEY (Red and Black)

Full Back—

1 Morgan, L.

Three-quarters—

2 Viney, B. E. Left Wing

3 Genders, D. N. Left Centre

4 Brighton, B. P. Right Centre

5 Laton, D. N. Right Wing

Half Backs—

6 Edge, A. M. Stand-off

7 Morgan, G. L. Scrum

Forwards—

8 Cathcart, A. D.

9 Humphreys, E. R. H.

10 Puddifoot, P. S.

11 Rossiter, E.

12 Little, R. J.

14 Chambers, P. F. M.

15 Perry, R. W.

16 Windridge, T. F.



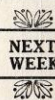
To-Night

Ray Milland - Patricia Roc - Marius Goring

THE CIRCLE OF DANGER (u)

Lizabeth Scott - Jane Greer - Dennis O'Keefe

THE COMPANY SHE KEEPS (a)



NEXT WEEK

James Stewart - Marlene Dietrich

NO HIGHWAY (u)

Dana Andrews - Jean Peters

DEEP WATERS (u)

NOTES

Moseley have drawn two of the recent games at Kingsholm. As one of the oldest clubs in the country, Moseley's visit in Gloucester's Jubilee Year will be a fitting tribute to the long existence of the fixture.

The form against Lydney was encouraging, the forwards particularly showing promise of being a good pack.

J. Taylor of Bristol University and Lydney, was also the County Wing last Season and his presence in the team will be watched with interest.

The GLOUCESTER RUGBY MEMORIAL FUND thanks the patrons of the Rugby Club for a fine send-off last Saturday, when the sale of Programmes showed an advance over last season. A continuance of this support will go on building up the Fund against the time when the long search for a suitable ground for the use of Local Clubs can be ended.

1951						1952					
Sep. 8	Lydney	H	11	3	Jan. 5	London Scottish	...	A	
" 13	Stroud	A	3	3	" 10	Army	...	H	
" 15	Moseley	H			" 12	Leicester	...	A	
" 17	Waterloo	H			" 19	Wasps	...	H	
" 22	Neath	H			" 26	Bristol	...	A	
" 27	Blackheath	H			Feb. 2	United Services	...	H	
" 29	Bristol	H			" 9	Bath	...	H	
Oct. 3	Cheltenham	A			" 16	Swansea	...	H	
" 6	Bedford	A			" 23	Cardiff	...	H	
" 10	Cardiff	A			Mar. 1	Northampton	...	A	
" 13	Old Paulines	H			" 8	R.A.F.	...	H	
" 20	Birkenhead Park	A			" 15	Guys Hospital	...	A	
" 27	Old Blues	H			" 22	Coventry	...	A	
Nov. 3	Leicester	H			" 29	Newport	...	H	
" 10	Newport	A			Apr. 5	Harlequins	...	H	
" 17	Devonport Services	H			" 10	Cheltenham	...	H	
" 24	Stroud	H			" 12	London Welsh	...	H	
Dec. 1	Oxford University	H			" 14	Bradford	...	H	
" 8	Glos. v. Dorset & Wilts., at Kingsholm	H			" 15	Lydney	...	A	
" 15	Coventry	H			" 19	Llanelli	...	H	
" 22	Bath	A			" 26	Exeter	...	A	
" 26	O.M.T.'s	H			" 28	Penzance and Newlyn	...	A	
" 27	Univ. Ath. Union	H			" 29	Teignmouth	...	A	
" 29	Richmond	H							

Printed by Ford & Branch Ltd., Stroud Road, Gloucester; and
Published by the Trustees of the Gloucester Rugby Memorial Fund