

GLOUCESTER
RUGBY

3^{d.}

FOOTBALL
CLUB

OFFICIAL PROGRAMME

KINGSHOLM, GLOUCESTER

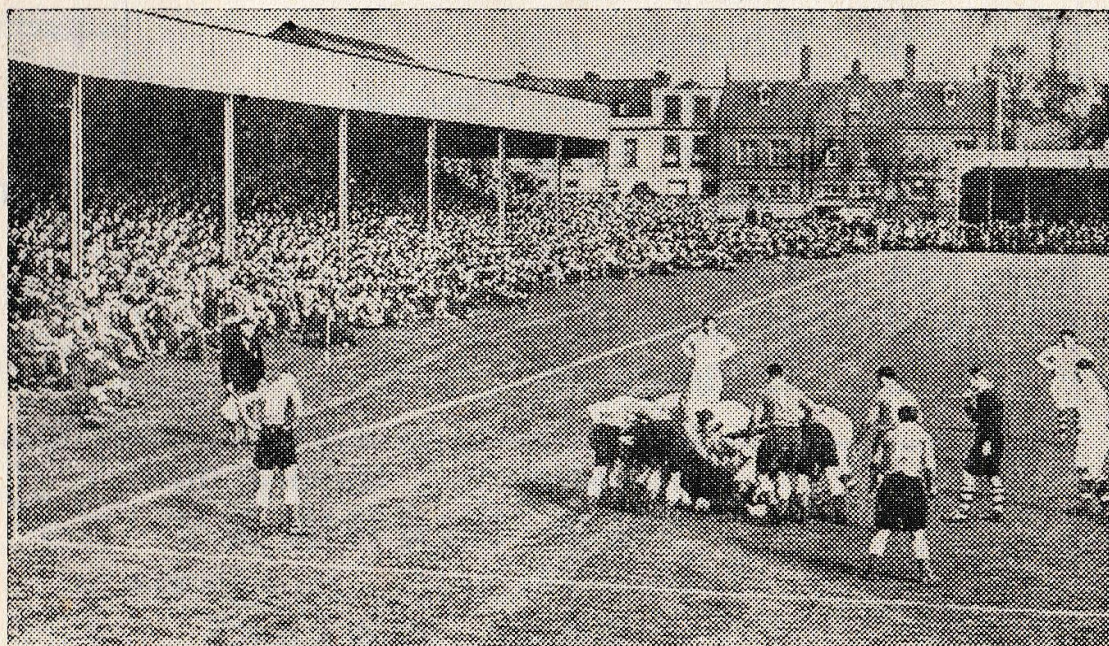
on

SATURDAY, SEPT. 22nd, 1951. Kick-off 3-15 p.m.

GLOUCESTER

v.

NEATH



"Gloucester Journal" Photograph

COMPLETE YOUR DAY'S PLEASURE by Visiting
GLOUCESTER HIPPODROME

SEE BELOW

GLOUCESTER (Red and White)

Full Back—

1 Hook, W.

Three-quarters—

2 Taylor, J. Right Wing

3 Sutton, R.

4 Hill, D.

5 Beamish, R. Left Wing

Half Backs—

6 Cartmell, W. B.

7 Humphries, D.

Forwards—

8 Parry, R.

9 Thomas, C.

10 Watkins, J. (Captain)

11 Wells, H. G.

12 Hastings, G.

14 Ibbotson, D.

15 Hodge, R.

16 Hudson, G.

Thursday, Sept. 27th

Gloucester

v.

Blackheath

Kick-off 5-45

Referee—

Dr. P. F. Cooper

(London Society)

Saturday, Sept. 29th

Gloucester

v.

Bristol

Kick-off 3-15

NEATH (Black)

Full Back—

Vivian Davies

Three-quarters—

Huine, J. Right Wing

Wells, G. Right Centre

Edwards, N. Left Centre

Maddocks, K. Left Wing

Half Backs—

Thomas, D. Outside Half

Thomas, G. Scrum Half

Forwards—

Thorley, J.

Jenkins, R.

Meredith, C.

Harris, L.

Harris, J.

Brennen, W.

Lewis, G.

Thomas, E.

To-Night

James Stewart - Marlene Dietrich

NO HIGHWAY (u)

Dana Andrews - Jean Peters

DEEP WATERS (u)

NEXT
WEEK

Abbott and Costello

MEET THE INVISIBLE MAN (u)

Richard Conte - Julia Adams - Richard Egan

HOLLYWOOD STORY (a)

NOTES

The very fine display by Waterloo on Monday, inspired Gloucester to put up their best performance of the season to date and the same team, except for the inclusion of Hook at full back, does duty to-day. Syme is not yet certain to remain in the district and Troughton has two cracked ribs. Beamish retains his place deservedly on his good showing on Monday. Turner, Teakle, Crabtree and V. Davies are others who are on the injured list.

Neath have started the season well and have a home victory over Cardiff to their credit.

The GLOUCESTER RUGBY MEMORIAL FUND has received a good send-off this season as regards proceeds from the Sale of these Programmes. Purchase one regularly and help the Fund.

| 1951 | | | | | | 1952 | | | | | |
|--------|---|-----|-----|---|----|------|--------|---------------------|-----|---|--|
| Sep. 8 | Lydney | ... | ... | H | 11 | 3 | Jan. 5 | London Scottish | ... | A | |
| " 13 | Stroud | ... | ... | A | 3 | 3 | " 10 | Army | ... | H | |
| " 15 | Moseley | ... | ... | H | 11 | 6 | " 12 | Leicester | ... | A | |
| " 17 | Waterloo | ... | ... | H | 9 | 5 | " 19 | Wasps | ... | H | |
| " 22 | Neath | ... | ... | H | | | " 26 | Bristol | ... | A | |
| " 27 | Blackheath | ... | ... | H | | | Feb. 2 | United Services | ... | H | |
| " 29 | Bristol | ... | ... | H | | | " 9 | Bath | ... | H | |
| Oct. 3 | Cheltenham | ... | ... | A | | | " 16 | Swansea | ... | H | |
| " 6 | Bedford | ... | ... | A | | | " 23 | Cardiff | ... | H | |
| " 10 | Cardiff | ... | ... | A | | | Mar. 1 | Northampton | ... | A | |
| " 13 | Old Paulines | ... | ... | H | | | " 8 | R.A.F. | ... | H | |
| " 20 | Birkenhead Park | ... | ... | A | | | " 15 | Guys Hospital | ... | A | |
| " 27 | Old Blues | ... | ... | H | | | " 22 | Coventry | ... | A | |
| Nov. 3 | Leicester | ... | ... | H | | | " 29 | Newport | ... | H | |
| " 10 | Newport | ... | ... | A | | | Apr. 5 | Harlequins | ... | H | |
| " 17 | Devonport Services | ... | ... | H | | | " 10 | Cheltenham | ... | H | |
| " 24 | Stroud | ... | ... | H | | | " 12 | London Welsh | ... | H | |
| Dec. 1 | Oxford University | ... | ... | H | | | " 14 | Bradford | ... | H | |
| " 8 | Glos. v. Dorset & Wilts., at Kingsholm | ... | ... | H | | | " 15 | Lydney | ... | A | |
| " 15 | Coventry | ... | ... | H | | | " 19 | Llanelli | ... | H | |
| " 22 | Bath | ... | ... | A | | | " 26 | Exeter | ... | A | |
| " 26 | O.M.T.'s | ... | ... | H | | | " 28 | Penzance and Newlyn | ... | A | |
| " 27 | Univ. Ath. Union | ... | ... | H | | | " 29 | Teignmouth | ... | A | |
| " 29 | Richmond | ... | ... | H | | | | | | | |

Printed by Ford & Branch Ltd., Stroud Road, Gloucester; and
Published by the Trustees of the Gloucester Rugby Memorial Fund