

GLOUCESTER  
RUGBY

3<sup>d.</sup>

FOOTBALL  
CLUB

**OFFICIAL**

**PROGRAMME**

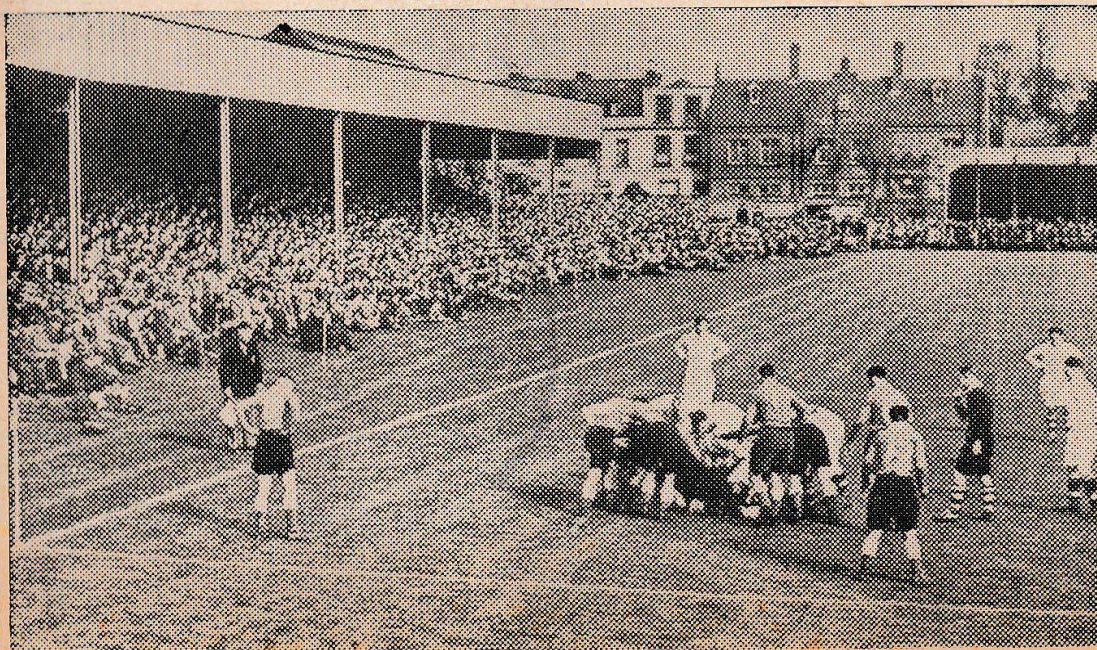
**KINGSHOLM, GLOUCESTER**

on

**SATURDAY, NOV. 3rd, 1951.**

**Kick-off 3-0 p.m.**

**GLOUCESTER**  
v.  
**LEICESTER**







"Gloucester Journal" Photograph



COMPLETE YOUR DAY'S PLEASURE by Visiting  
**GLOUCESTER HIPPODROME**

SEE BELOW

<b>GLOUCESTER</b>	Red and White	<b>Saturday, Nov. 10th</b>	<b>LEICESTER</b>	Yellow, Red, Green and Blue
Full Back—		<b>United</b>	Full Back—	
1	Hook, W.	v.	O	Marshall, R.
Three-quarters—		<b>Newport United</b>	Three-quarters—	
2	Taylor, J.	Kick-off 3-0	N	Redfern, W. H. Left Wing
3	Terrington, H.		M	Cullen, G. H.
4	Sutton, R.		L	Thomas, H.
5	Crabtree, C.		K	Lawrence, C. G. S. Right Wing
Half Backs—		Referee—	Half Backs—	
6	Cartmell, W. B.	Mr. T. David	J	Doyle, L. T. Stand-off
7	Davies, V.	Welsh Union.	I	Moore, W. K. T. Scrum
Forwards—			Forwards—	
8	Parry, R.		A	Bolesworth, D.
9	Thomas, C.		B	Pratt, S.
10	Hastings, G.	<b>Saturday, Nov. 17th</b>	C	Chawner, L.
11	Wells, H. G.	<b>Gloucester</b>	D	Lacey, E.
12	Hudson, B.	v.	E	Smith, R. H.
14	Ford, P.	<b>Devonport Services</b>	F	Day, J. D.
15	Hodge, R.	Kick-off 2-45	G	Bleasdale, T.
16	Hudson, G.		H	Ashurst, A. D.
	Humphrey Bogart in		Robert Mitchum - Jane Russell	
<b>To-Night</b>	<b>SIROCCO</b> (a)	<b>NEXT WEEK</b>	<b>HIS KIND OF WOMAN</b> (a)	
	Stanley Holloway in		Leon Errol	
	<b>MIDNIGHT EPISODE</b> (a)		<b>POP ALWAYS PAYS</b> (u)	



## NOTES

Last season Leicester won at Kingsholm for the first time since the war, thus avenging a defeat at Leicester in 1947/8. Although their record this season is not so impressive as Gloucester's (it is P 10, W 5, L 5. Points 112—100) they have some good performances against other leading clubs to their credit.

Jack Watkins is away to-day with the British Police team in France. The five County Players of last week and R. Parry (Reserve) return to the side and B. Hudson retains his place vice Watkins.

Make it a habit to look out for

SELLERS OF PROGRAMMES, they are at or near each of the entrances. Every Programme purchased helps along the GLOUCESTER RUGBY MEMORIAL FUND.

1951				1952					
Sep. 8	Lydney	...	H	11	3	Jan. 5	London Scottish	...	A
" 13	Stroud	...	A	3	3	" 10	Army	...	H
" 15	Moseley	...	H	11	6	" 12	Leicester	...	A
" 17	Waterloo	...	H	9	5	" 19	Wasps	...	H
" 22	Neath	...	H	11	11	" 26	Bristol	...	A
" 27	Blackheath	...	H	14	8	Feb. 2	United Services	...	H
" 29	Bristol	...	H	11	6	" 9	Bath	...	H
Oct. 3	Cheltenham	...	A	6	3	" 16	Swansea	...	H
" 6	Bedford	...	A	9	19	" 23	Cardifi	...	H
" 10	Cardiff	...	A	3	24	Mar. 1	Northampton	...	A
" 13	Old Paulines	...	H	21	5	" 8	R.A.F.	...	H
" 20	Birkenhead Park	...	A	9	3	" 15	Guys Hospital	...	A
" 27	Old Blues	...	H	56		" 22	Coventry	...	A
Nov. 3	Leicester	...	H			" 29	Newport	...	H
" 10	Newport	...	A			Apr. 5	Harlequins	...	H
" 17	Devonport Services	...	H			" 10	Cheltenham	...	H
" 24	Stroud	...	H			" 12	London Welsh	...	H
Dec. 1	Oxford University	...	H			" 14	Bradford	...	H
" 8	Glos. v. Dorset & Wilts., at Kingsholm	...	H			" 15	Lydney	...	A
" 15	Coventry	...	H			" 19	Llanelly	...	H
" 22	Bath	...	A			" 26	Exeter	...	A
" 26	O.M.T.'s	...	H			" 28	Penzance and Newlyn	...	A
" 27	Univ. Ath. Union	...	H			" 29	Teignmouth	...	A
" 29	Richmond	...	H						

Printed by Ford & Branch Ltd., Stroud Road, Gloucester; and  
Published by the Trustees of the Gloucester Rugby Memorial Fund