

GLOUCESTER
RUGBY

3^{d.}

FOOTBALL
CLUB

OFFICIAL

PROGRAMME

KINGSHOLM, GLOUCESTER

on

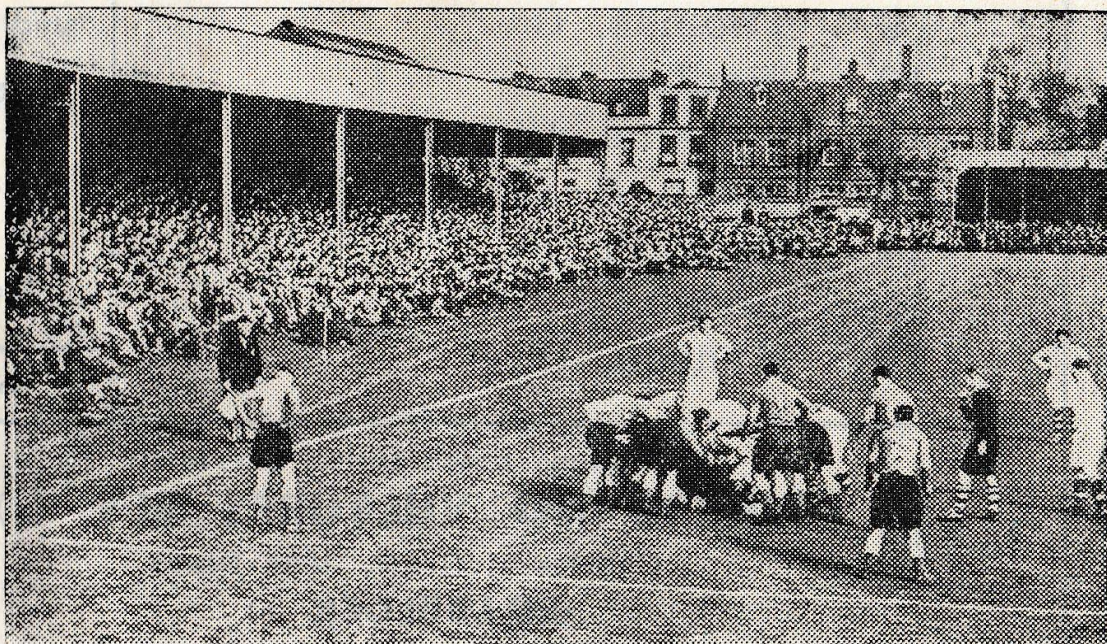
SATURDAY, FEB. 16th, 1952.

Kick-off 3-0 p.m.

GLOUCESTER

v.

SWANSEA



"Gloucester Journal" Photograph

COMPLETE YOUR DAY'S PLEASURE by Visiting
GLOUCESTER HIPPODROME

| GLOUCESTER Red and White | | Saturday, Feb. 23rd | SWANSEA (White) |
|---|--|--|-------------------------|
| Full Back— | | Gloucester | Full Back— |
| 1 *Hook, W. | | v. | 1 Terry Davies |
| Three-quarters— | | Cardiff | Three-quarters— |
| 2 Taylor, J. (R) | | Kick-off 3-15 | 5 Perris James (R) |
| 3 Terrington, H. | | | 4 L. Gazzi |
| 4 Teakle, J. | | | 3 B. Edwards |
| 5 Turner, E. (L) | | | 2 H. D. Phillips (L) |
| Half Backs— | | Referee— | Half Backs— |
| 6 Cartmell, W. B. | | Mr. W. Woodhall | 6 T. Williams |
| 7 Davies, V. | | (London) | 7 Roy Sutton |
| Forwards— | | | Forwards— |
| 8 Hastings, G. | | Saturday, March 1st | 8 Doug. Jones |
| 9 Thomas, C. | | United | 9 Dudley Thomas |
| 10 Wadley, A. | | v. | 10 H. V. Payne |
| 11 Watkins, J. (Captain) | | Cleve | 11 Wilf. Jones |
| 12 Wells, H. G. | | Kick-off 3-30 | 12 Bryn Evans |
| 14 Ford, P. | | | 14 *Len Blyth (Captain) |
| 15 Hodge, R. | | | 15 W. D. Johnson |
| 16 Hudson, G. | | *Internationals. | 16 *R. C. C. Thomas |
| Anthony Steel, Dinah Sheridan WHERE NO VULTURES FLY (u) Charles McGraw, Joan Dixon ROADBLOCK (a) | | NEXT WEEK Dana Andrews, Dorothy McGuire, Farley Granger I WANT YOU (u) Dick Powell, Rhonda Fleming CRY DANGER (a) | |

To-Night

NEXT WEEK

The late King George VI

A minutes' silence will be observed before the commencement
of to-day's game as a mark of respect to His Late Majesty.
This will be followed by the playing of the National Anthem.

NOTES

The free-scoring against the Wasps and the United Services, and the great display against Bristol will give Gloucester confidence to face the hard matches which lie ahead. To meet Swansea and Cardiff in successive weeks is a stern task, and we welcome the first of these teams to-day. They have the distinction of running the South Africans close and always provide strong opposition at Kingsholm.

Swansea bring their two International forwards, and H. D. Phillips, who is on the fringe of the Welsh selection this season. Their young full-back, Terry Davies, has been winning good reports since commencing with the side last season, and Roy Sutton has been unlucky in not gaining a Welsh Cap.

Vivian Davies will be in opposition to his home-town team and it is good that his recent injuries have not prevented him turning out to-day. Charlie Crabtree and Roy Parry are still unfit. E. Turner retains his place and with Teakle returning after representing Somerset in the County Semi-Final, the three-quarter line is an all "T" quartette.

The good record this season of the United side and their recent performances have attracted notice in the local press, and it is intended to publish their record on future programmes.

THE GLOUCESTER RUGBY MEMORIAL FUND is grateful to all patrons who help the Fund by continued purchase of these programmes.

| 1951 | | | | | | | | | | 1952 | | | | | | | | | |
|--------|---|-----|-----|---|----|----|--------|---------------------|----------|------|---|----|----|--|--|--|--|--|--|
| Sep. 8 | Lydney | ... | ... | H | 11 | 3 | Jan. 5 | London | Scottish | ... | A | 5 | 3 | | | | | | |
| " 13 | Stroud | ... | ... | A | 3 | 3 | " 10 | Army | ... | ... | H | 0 | 5 | | | | | | |
| " 15 | Moseley | ... | ... | H | 11 | 6 | " 12 | Leicester | ... | ... | A | 5 | 9 | | | | | | |
| " 17 | Waterloo | ... | ... | H | 9 | 5 | " 19 | Wasps | ... | ... | H | 27 | 12 | | | | | | |
| " 22 | Neath | ... | ... | H | 11 | 11 | " 26 | Bristol | ... | ... | A | 11 | 6 | | | | | | |
| " 27 | Blackheath | ... | ... | H | 14 | 8 | Feb. 2 | United Services | ... | ... | H | 27 | 11 | | | | | | |
| " 29 | Bristol | ... | ... | H | 11 | 6 | " 9 | Bath | ... | ... | H | — | — | | | | | | |
| Oct. 3 | Cheltenham | ... | ... | A | 6 | 3 | " 16 | Swansea | ... | ... | H | | | | | | | | |
| " 6 | Bedford | ... | ... | A | 9 | 19 | " 23 | Cardiff | ... | ... | H | | | | | | | | |
| " 10 | Cardiff | ... | ... | A | 3 | 24 | Mar. 1 | Northampton | ... | ... | A | | | | | | | | |
| " 13 | Old Paulines | ... | ... | H | 21 | 5 | " 8 | R.A.F. | ... | ... | H | | | | | | | | |
| " 20 | Birkenhead Park | ... | ... | A | 9 | 3 | " 15 | Guys Hospital | ... | ... | A | | | | | | | | |
| " 27 | Old Blues | ... | ... | H | 56 | 3 | " 22 | Coventry | ... | ... | A | | | | | | | | |
| Nov. 3 | Leicester | ... | ... | H | 16 | 8 | " 29 | Newport | ... | ... | H | | | | | | | | |
| " 10 | Newport | ... | ... | A | 0 | 15 | Apr. 5 | Harlequins | ... | ... | H | | | | | | | | |
| " 17 | Devonport Services | ... | ... | H | 32 | 8 | " 10 | Cheltenham | ... | ... | H | | | | | | | | |
| " 24 | Stroud | ... | ... | H | 0 | 0 | " 12 | London Welsh | ... | ... | H | | | | | | | | |
| Dec. 1 | Oxford University | ... | ... | H | 24 | 21 | " 14 | Bradford | ... | ... | H | | | | | | | | |
| " 8 | Glos. v. Dorset & Wilts., at Kingsholm | ... | ... | | | | " 15 | Lydney | ... | ... | A | | | | | | | | |
| " 15 | Coventry | ... | ... | H | 16 | 8 | " 19 | Llanelli | ... | ... | A | | | | | | | | |
| " 22 | Bath | ... | ... | A | 0 | 3 | " 26 | Exeter | ... | ... | A | | | | | | | | |
| " 26 | O.M.T.'s | ... | ... | H | 12 | 6 | " 28 | Penzance and Newlyn | ... | ... | A | | | | | | | | |
| " 27 | Univ. Ath. Union | ... | ... | H | 3 | 5 | " 29 | Teignmouth | ... | ... | A | | | | | | | | |
| " 29 | Richmond | ... | ... | H | 15 | 8 | | | | | | | | | | | | | |

SATURDAY, MARCH 1st

Kick-off 2-30 p.m.

Gloucester & District Schools R.U. v Warwick Schools R.U. (15 GROUP)

Printed by Ford & Branch Ltd., Stroud Road, Gloucester; and
Published by the Trustees of the Gloucester Rugby Memorial Fund