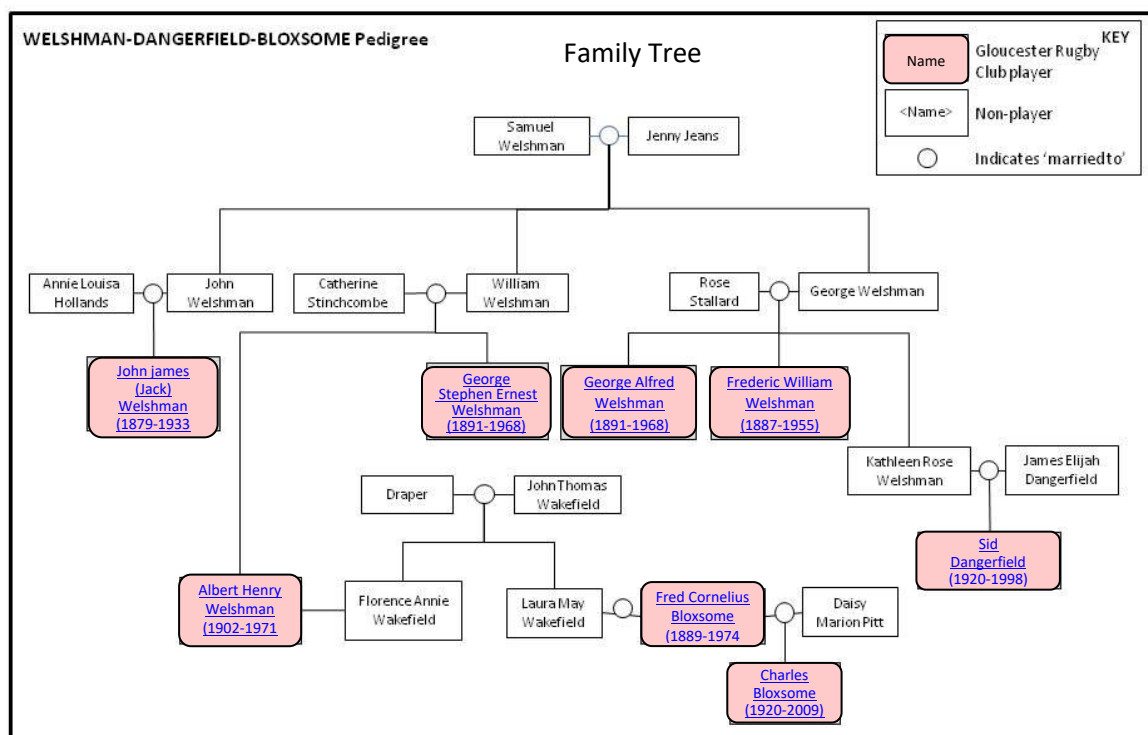


## EXTENDED FAMILIES: The WELSHMAN, DANGERFIELD and BLOXSOME Greater Family:

The relationships based on the families [John James \('Jack'\) Welshman](#), [Albert Henry Welshman](#), [George Stephen Ernest Welshman](#), [George Alfred Welshman](#), [Frederick William Welshman](#), [Sydney \('Sid'\) Frederick W. Dangerfield](#), [Frederick Cornelius Bloxsome](#) and [Charles Leonard Bloxsome](#).



The **WELSHMAN** Family, brothers [Albert Henry Welshman](#) and [George Stephen Ernest Welshman](#), brothers [George Alfred Welshman](#) and [Frederick William Welshman](#) and their cousin [John James \('Jack'\) Welshman](#). Also [Sid Dangerfield](#) who was the nephew of [George Alfred Welshman](#) and [Frederick William Welshman](#).

**Albert Henry Welshman** was born in Gloucester on 28 December 1902, the son of William Welshman (1865-1938), a Blacksmith, and his second wife, Catherine May Welshman (née Stinchcombe) (1870-1940). Albert was one of seven children of William and Catherine, including his brother, [George Stephen Ernest Welshman](#); he also had five half siblings from his father's previous marriage. The family lived in Frampton Road, Gloucester. Albert's cousins were [John James Welshman](#) and the brothers, [George Alfred Welshman](#) and [Frederick William Welshman](#). On 10 November 1934 Albert married Florence Annie Wakefield at Stephen's Church, Gloucester; his Best Man was **Fred Wadley**, the Gloucester rugby captain. The couple moved to Goodyere Street, Gloucester and had one son. Albert's his sister-in-law, Laura May Wakefield, was married to [Fred Bloxsome](#). Albert worked at the Gloucester Carriage and Wagon Works and by 1939 was the Head Riveter of Rolling Stock. **As a back row forward, Albert made 185 appearances for the Gloucester First XV between 1930 and 1937 scoring 15 tries. He also made 5 appearances for the Second XV and was awarded 2 Gloucestershire County caps.** Albert died at Gloucester in 1971 aged 69 years.

[Back to top of page](#)

[Back to Family Tree](#)

[Go to List of all inter-relationships](#)

**George Stephen Ernest Welshman** was born at Gloucester on 9 June 1910, the son of William Welshman (1865-1938), a Blacksmith, and his second wife, Catherine May Bloxsome (née Stinchcombe) (1870-1940). George was one of seven children of William and Catherine, including his brother, [Albert Henry Welshman](#); he also had five half siblings from his father's previous marriage. The family lived in Frampton Road, Gloucester. George's cousins were [John James Welshman](#) and the brothers, [George Alfred Welshman](#) and [Frederick William Welshman](#). At Gloucester on 5 June 1933 he married Emily Louisa Trenfield and the couple had two children. They resided at Frampton Road, Gloucester where George initially worked as Fitter. However by 1939 they had moved to Northover Road, Portsmouth and George was now employed as an Aircraft Engineer. **George, a forward, appeared 8 times for the Gloucester First XV between 1930 and 1931 and a further 26 games for the Second XV between 1931 and 1933.** He died in Hampshire in 1975 aged 65 years while his wife, Emily died in 2000 aged 90 years.

[Back to top of page](#)

[Back to Family Tree](#)

[Go to List of all inter-relationships](#)

**George Alfred Welshman** was born in Gloucester on 28 August 1891, the son of George Welshman (1869-1941), landlord of the Sir Colin Campbell Inn, Gloucester, and Rose Welshman (1868-1919) (née Stallard) who lived in Llanthony Lane, Hempstead; by 1911 his father has switched occupations and had become a Fisherman. George was one of five children including his brother of [Frederick William Welshman](#). He was the cousin of [John James Welshman](#) and the brothers [Alfred Henry Welshman](#) and [George Stephen Ernest Welshman](#). On 11 August 1911 George married Fanny Francis Woodcock at St Paul's Church, Gloucester and together they would have three children. Soon after the marriage and living at Tredworth Road, Gloucester, George changed his occupation as a Blacksmith and became a Beer Retailer while his wife worked as a Greengrocer which was also her father's occupation. **George, a fullback, appeared 22 times for the Gloucester First XV between 1919 and 1920 and as a kicker scored 29 points. He was also awarded one Gloucestershire County cap.** In 1920 George and his wife separated and shortly after he emigrated to Australia along with his brother [Frederick William Welshman](#) and his wife Nellie and their three children. They joined their uncle and auntie, John and Annie Welshman, who had emigrated to Fremantle, Western Australia in 1912 together with their five sons. George and Frederick's cousin, [John James Welshman](#); however by 1914 John had returned to Gloucester. George died in Albany, Western Australia in 1968 age 77 years.

[Back to top of page](#)

[Back to Family Tree](#)

[Go to List of all inter-relationships](#)

**Frederick William Welshman** was born in Gloucester in 1887 and baptised on 22 January 1888, the son of George Welshman (1869-1941), landlord of the Sir Colin Campbell Inn, Gloucester and Rose Welshman (1868-1919) (née Stallard); by 1911 his father has switched occupations and had become a Fisherman. Frederick was one of five children including his brother George Alfred Welshman. He was the cousin of [John James Welshman](#) and the brothers [Alfred Henry Welshman](#) and [George Stephen Ernest Welshman](#). Frederick worked as a Blacksmith and at St Luke's Church on 4 November 1912 married Nellie Davenport. The couple had three children, all born in Gloucester, including Sydney George Welshman who as a Squadron Leader in the RAF in the Second World War

was killed in action on 1 December 1943. Frederick, a fullback made 50 appearances for the Gloucester First XV between 1907 and 1910 and as a kicker scored 100 points. He also appeared on 36 times for the Gloucester Second XV between 1906 and 1910. He was awarded five Gloucestershire County caps. In 1920 Frederick, now a farmer, and his wife Nellie and their three children together with his brother [George Alfred Welshman](#) travelled third class on board S.S. Orvieto to Western Australia together. They joined up with their uncle and auntie, John and Annie Welshman; their cousin [John James Welshman](#) by this time had returned to Gloucester. Frederick died in 1955 in New South Wales, Australia age 68 years.

[Back to top of page](#)

[Back to Family Tree](#)

[Go to List of all inter-relationships](#)

**John James ('Jack') Welshman** was born in Gloucester in 1879, the son of John Welshman (1859-1927) and Annie Louisa Welshman (née Hollands) (1861-1935). Jack was the cousin of the brothers [Alfred Henry Welshman](#) and [George Stephen Ernest Welshman](#) and of the brothers [George Alfred Welshman](#) and [Frederick William Welshman](#). He lived in Gloucester with his family, primarily in Albany Street, but by 1901 the family had moved to Leeds where he was employed as a Blacksmith. By 1911 he had returned to Gloucester and lodged with his uncle William Hollands in Clifton Road. However in 1912 his parents emigrated to Western Australia together with their five sons which included John. His stay in Australia was short lived and by 1914 he was once more back in Gloucester. On 7 August 1914, following the outbreak of war, he enlisted in the Army Ordnance Corps. He was promoted to the rank of Armourer Sergeant but did not serve overseas. On 28 July 1916 he married Emily Alice Hipwood and the couple lived in Quay Street, Gloucester. At the time of his marriage he was a Staff Sergeant, A/2356, with the Army Ordnance Corps. On the 24 May 1919 he was discharged from the army as 'no longer fit for service' owing to an illness and was awarded a Silver War Badge. His four brothers who had remained in Australia all served in the Great War with the Australian Imperial Force; one of his brothers, Alfred Charles Welshman was killed in action on 8 June 1917 age 20 years and is commemorated on the Menin Gate Memorial. **Jack, a forward, made 3 appearances for the Gloucester First XV in 1906 as well as 3 for the Second XV.** He died at Granville Street, Gloucester on 13 August 1933 age 54 years after a long and painful illness; his wife, Emily had previously died in 1929 age 48 years.

[Back to top of page](#)

[Back to Family Tree](#)

[Go to List of all inter-relationships](#)

**Sydney ('Syd') Frederick W. Dangerfield** was born in Gloucester on 19 December 1920, one of the six children of James Elijah Dangerfield (1885-1951), a Coal Merchant, and Kathleen Rose Dangerfield (née Welshman) (1893-1939). His mother, Kathleen, was the sister of [George Alfred Welshman](#) and [Frederick William Welshman](#) and as a consequence they were Syd's uncles. Syd's father fought in the Great War with the 4<sup>th</sup> Battalion, Gloucestershire Regiment but was discharged in 1916 with heart disease while Syd would serve in the Royal Air Force during the Second World War. **He would represent the RAF at rugby and play in the 1945-46 Service Internationals** which celebrated end of Second World War and which heralded the resumption of international matches which had been suspended during the war. **Syd, a three quarter, made 116 appearances for the Gloucester First XV between 1945 and 1950 and scored 44 tries. He was also awarded 11**

**Gloucestershire County caps.** In 1951 Syd married Marian Matilda White and the couple lived initially at Hempstead and then Hucclecote. Syd served for over 26 years as a Police Officer, rising to the rank of Sergeant serving the communities of Cheltenham, Lydney, Stroud and Gloucester; he would inevitably play rugby for the Gloucestershire Police. After retirement from the Police he became an Educational Welfare Officer in Gloucestershire. Syd died at the Woodstock Nursing Home on 25 December 1998 following a long illness aged 78 years; his funeral was held at St James' Church, Hucclecote. There is a [detailed player profile of Sid Dangerfield](#) on the People/Player Profiles section of this website.

[Back to top of page](#)

[Back to Family Tree](#)

[Go to List of all inter-relationships](#)

The **BLOXSOME** Family, father and son [Frederick Cornelius Bloxsome](#) and [Charles Bloxsome](#).

**Frederick Cornelius Bloxsome** was born in Gloucester on 21 July 1889, the son of William Bloxsome (1856-1933), a General Labourer, and Ann Bloxsome (1864-1932) (née Saunders). Frederick was one of five children, three of whom died in infancy. The family lived in Alvin Street, Gloucester and by the age of 14 years Frederick is described as a General Labourer, although he would become a Packer in a jam factory. On 2 August 1913 at All Saints Church, Gloucester, Frederick married Daisy Marion Pitt. The couple lived at 191 Barton Street, Gloucester and together they had three children, one of whom died only 10 months old and another died age 3 years. The remaining son, [Charles Leonard Bloxsome](#) would survive childhood and play for the Gloucester Rugby Club. Sadly his wife, Daisy, died in 1926 age 34 years. In 1927 Frederick married Laura May Wakefield and together they had six children. Laura's sister Florence Annie married [Albert Henry Welshman](#). During the Great War Frederick enlisted in the army and fought in France on the Western Front initially with the 2<sup>nd</sup>/6<sup>th</sup> Battalion and then with the 2<sup>nd</sup>/5<sup>th</sup> Battalion of the Gloucestershire Regiment. **As a wing Frederick made 31 appearances for the Gloucester First XV between 1906 and 1914 and scored 12 tries. He also made 69 appearances for the Second XV and was the captain for the 1913-1914 season.** Frederick died in Gloucester in 1974 age 85 years while Laura died in 1984 age 82 years.

[Back to top of page](#)

[Back to Family Tree](#)

[Go to List of all inter-relationships](#)

**Charles Leonard Bloxsome** was born in Gloucester in 1920, the son of [Frederick Cornelius Bloxsome](#) and Daisy Bloxsome (née Pitt). In 1951 Charles married Pamela Rose (Rosemary) Price. **Charles, a wing, would make one appearance for the Gloucester First XV in 1946.** He died in 2016 age 96 years; his wife, Pamela had died previously in 2009 age 84 years.

[Back to top of page](#)

[Back to Family Tree](#)

[Go to List of all inter-relationships](#)

-----//-----