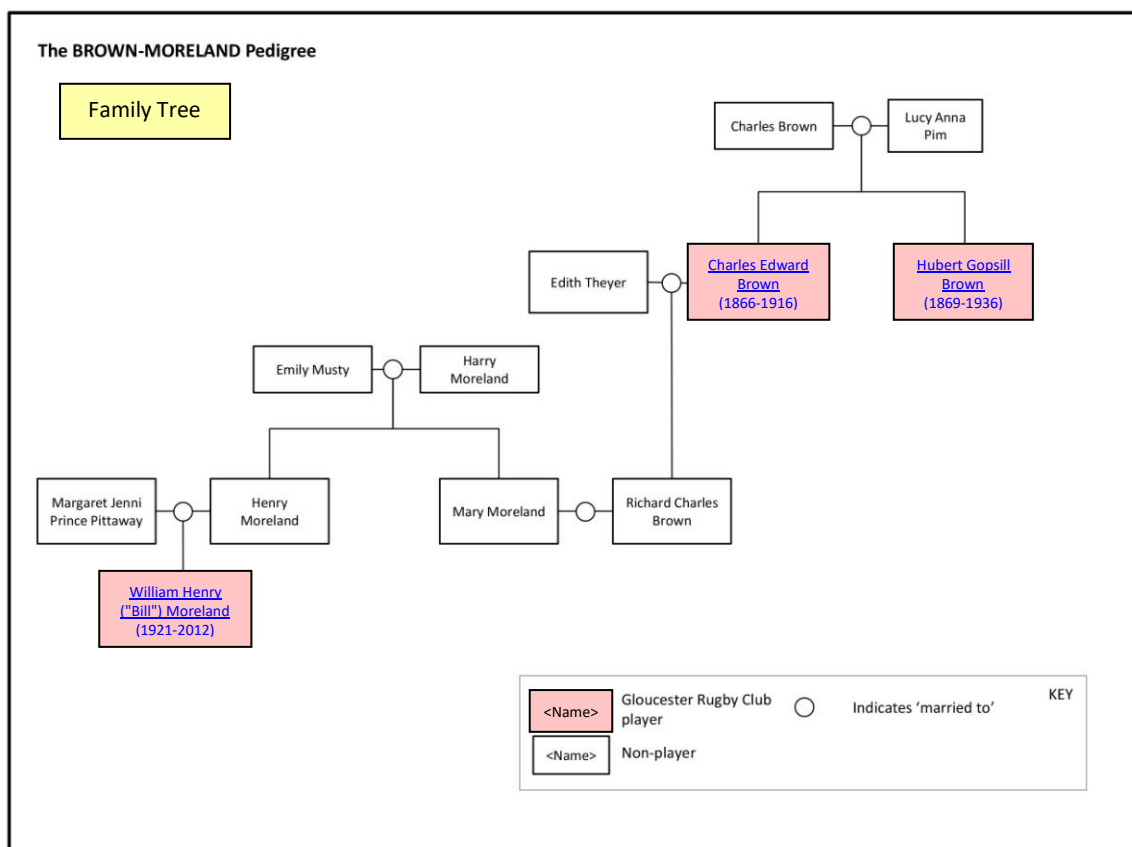


EXTENDED FAMILIES: The BROWN and MORELAND Greater Family: The relationships based on marriage between the families of the brothers [Charles Edward Brown](#) and [Hubert Gopsill Brown](#) and Charles' son's nephew [William Henry \('Bill'\) Moreland](#)



The **BROWN** Family – brothers [Charles Edward Brown](#) and [Hubert Gopsill Brown](#)

Charles Edward Brown was born in Gloucester on 3 June 1866, the son of Charles Brown (1832-1900) and Lucy Anna Brown (née Pim) (1836-1917). The couple had four children including Charles and his brother [Hubert Gopsill Brown](#) who would also play for Gloucester. Charles' father set up the firm of Gopsill Brown and Sons Ltd., sack contractors which traded until its demise in the 1990s from the Lock Warehouse at Gloucester Quays; he died in 1900 at the Grand Hotel, Teriet, Switzerland on Lake Geneva where he had gone for his failing health. Charles worked at the family business. The family were Quakers and lived variously at Belle Vue House South Hamlet, Wayside Barnwood and Saintbridge House Upton St Leonards. On 10 August 1892 Charles married Edith Theyer at Badgeworth and the couple had two sons and eldest, James, became a Doctor while the youngest, Richard, became a Director in the family business. Richard married Mary Moreland of Moreland Matches; Mary was the aunt of [William Henry \('Bill'\) Moreland](#), the Gloucester player. **Charles who played as a forward, a half-back and in the three quarters, represented the Gloucester First XV in 81 games between 1885 and 1891 scoring 17 tries; he captained the Club in the 1889-1890 season. He also won 9 Gloucestershire County caps.** Charles after retiring from playing rugby served on the Club committee and held the posts of Secretary and President; he attended the opening of Kingsholm in 1891. Charles died on 22 January 1916 aged 50 years from a heart attack near Ross-on-Wye whilst out shooting rabbits with a group of friends; he is buried at Gloucester Cemetery. His wife, Edith died in 1940 aged 72 years.

There is [a detailed profile of Charles Edward Brown](#) in the People/Player Profiles section of this website.

Goto

[Top of Page](#)

[Family Tree](#)

[List of all Family Inter-relationships](#)

Hubert Gopsill Brown was born in Gloucester in 1869, the son of Charles Brown (1832-1900) and Lucy Anna Brown (née Pim) (1836-1917). The couple had four children including Hubert and his older brother [Charles Edward Brown](#) who also played for Gloucester. Hubert's father set up the firm of Gopsill Brown and Sons Ltd., sack contractors which traded until its demise in the 1990s from the Lock Warehouse at Gloucester Quays. However unlike his brother, Hubert did not work for the family business and set up a separate company, Edwards and Brown, Coal Factors, but ceased trading in 1905 due to a downturn in coal demand. He continued to be employed in the fuel industry selling coal and oil on commission. On 22 January 1906 he married Alice Maud Johnson and lived in Bloomfield Road, Gloucester; the couple had one daughter. However in 1926 the couple separated. **Hubert, a forward, played 28 games for the Gloucester First XV scoring 2 tries between 1888 and 1892.** Hubert died on 17 March 1936 aged 67 years and was cremated with his ashes being interred in the family grave at Gloucester Cemetery. His wife, Alice, died in 1947 in Folkestone where she lived with her daughter.

Goto

[Top of Page](#)

[Family Tree](#)

[List of all Family Inter-relationships](#)

The **MORELAND** Family – [William Henry \('Bill'\) Moreland](#)

William Henry ('Bill') Moreland was born at Ross on Wye on 27 May 1921, the son of Henry Moreland (1896-1964) and Margaret Jenni Prince Moreland (née Pittaway) (1896-1964). The couple had four children. Bill's father, Henry, was the grandson of Samuel J. Moreland, the founder of S.J. Moreland and Sons Ltd. (a.k.a. Moreland Matches), the manufacturer of *Lucifer* and *Vesta* matches; the company closed in 1976 after 109 years. Henry became a Director of the firm after serving as a Second Lieutenant in the 9th Battalion, Cheshire Regiment during the Great War. Bill's uncle Richard, the husband of his mother's sister, was the son of [Charles Edward Brown](#). Bill did not go into the family business but became the Managing Director of Simon-Barron Ltd., Gloucester, manufacturing animal feed pellets. During the Second World War he served as a Captain in the 43rd Battalion, Reconnaissance (RECCE) Corps; the was the same unit as **Walter Critchley** who had played for Gloucester in the season immediately prior to the war. Bill was Mentioned in Despatches. His brother Samuel John Moreland served with the Royal Gloucestershire Hussars and was awarded the Military Cross while his other brother Robert served with the Royal Navy. In March 1948 Bill married the former Tewkesbury resident Sheila Ann Crowder at St Margaret's Church at Thimbleby in Lincolnshire; the couple had four children. **Bill, played as a scrum half and a centre and represented the Gloucester First XV on 33 occasions between 1940 and 1950, scoring 5 tries. In the 1947-48 season was the Captain of Gloucester United.** Bill died on 1 July 2012 at Stroud aged 91 years.

Goto

[Top of Page](#)

[Family Tree](#)

[List of all Family Inter-relationships](#)

-----//-----