



CHERRY & WHITES



GLOUCESTER RUGBY v BRISTOL BEARS

GALLAGHER PREMIERSHIP
12 FEBRUARY 2021
7.45PM

DIGITAL DOWNLOAD —
FREE FOR THE 2020-21 SEASON

 **MITSUBISHI MOTORS**
MAIN CLUB PARTNER





GLOUCESTER RUGBY

KINGSHOLM STADIUM, KINGSHOLM
ROAD GLOUCESTER GL1 3AX

www.gloucester rugby.co.uk

Facebook gloucester rugby

Twitter @gloucester rugby

Main Switchboard

01452 872250

Customer Email

customerservices@gloucester rugby.co.uk

Club President: Fred Reed

PLAYING DEPARTMENT

Head Coach: George Skivington

Team Manager: Sam Raven

Rugby Administrator: Karen Harrington

CLUB MANAGEMENT

Chairman: Martin St. Quinton

CEO: Lance Bradley

COO: Alex Brown

Interim Finance Director: Richard Weller

Marketing Manager: Lucy Nottage

Media & Digital Communications

Manager: Tim Rogers

Head of Venue Sales: Angela Sanders

Head of Partnerships: Mike Thomas

Commercial Sales Manager: Tom Adams

Operations Manager: Helen Grayer

Finance Manager: Matt Mulcahy

HR Manager: Zofia Karkola-Lubacha

PROGRAMME

Lead Editor: Louis Shaw

Co-editor: Tim Rogers

Photography: Martin Bennett, Getty Images

Design: Daniel Parker

Produced by: Amberley Court Associates

aca

CREATIVE DESIGN, PRINT & PUBLISHING



07 George Skivington

10 Club News

12 Men's Squad

14 In Opposition

17 Last Time We Met

18 Gloucester Rugby Heritage

20 Andy Hazell

22 Feature Interview

25 Community

27 Academy Squad

29 Gloucester-Hartpury Women Squad

30 Gloucester-Hartpury Women Feature

34 Match Action / London Irish

38 Team Line Ups





COLUMN SPONSORED BY



HEAD COACH

GEORGE SKIVINGTON



HELLO AND WELCOME TO OUR DIGITAL MATCHDAY PROGRAMME. WHILST FANS AREN'T ALLOWED INTO THE STADIUM WE'RE TRYING THIS DIGITAL FORMAT TO HELP BRING YOU CLOSER TO THE ACTION FROM KINGSHOLM.

This evening it's the West Country derby as we host Bristol Bears under the lights. It's not going to be the same without you, but we know you'll be giving us the support you always do from home.

This fixture against Bristol is one that goes back a long way and George Skivington is looking forward to the challenge.

"It doesn't get much tougher than Bristol who are top of the league. They play great rugby. They are a tough team to analyse because they have scored a lot of maul tries, they have scored a lot of wonder tries out the back, there is a lot of variation in what they do.

"They are coached very, very well. It is exciting because it is a local derby and they are currently the best team in the country and it is going to be another level to test ourselves.

"I am expecting they will be disappointed with the result last week and I am expecting a sharp Bristol team, a team who are not used to losing. I am certain they will come here sharp and looking to make amends.



"They've got stardust all over the place in the squad and there's plenty of threats even without Semi Radradra on the field.

"I'd have loved to have come in and turned the fortunes around in a couple of months but I've said before, we've got a very strong plan, we're happy with that plan.

"It doesn't make it any less painful when you're trying to build things and

you're going through the process but there are a lot of good blueprints. Bristol have done it, Exeter and London Irish have gone through that process as well. When you get it right and you set those foundations and then put layers on top, the rewards are there at the end.

"You've got to be patient and you've got to do it the right way. There's no point in trying to cut corners as I think it would just come crumbling down."



CLUB NEWS

INTERNATIONAL ROUND UP

GLOUCESTER RUGBY WAS WELL REPRESENTED IN THE SIX NATIONS WITH LOUIS REES-ZAMMIT, CHRIS HARRIS, STEPHEN VARNEY AND JONNY MAY ALL STARTING FOR THEIR INTERNATIONAL TEAMS IN ROUND 1 OF THE TOURNAMENT.



LOUIS REES-ZAMMIT

Wales beat Ireland 21-16 at the Principality Stadium and it was a try from Rees-Zammit that secured the victory for the Welsh. The winger received the ball from Leigh Halfpenny in the wide channel and with a burst of acceleration, dotted down with one hand to put his side ahead.



CHRIS HARRIS

Scotland beat England 11-6, the first time they have beaten England at Twickenham in 38 years. Harris started in the centre and was solid in attack and defence and even filled in on the wing late in the game.

STEPHEN VARNEY

Stephen Varney was a live wire in Italy's 50-10 loss to France. Starting at scrum-half, Varney made 109 passes and managed the Italian game well. It looked like he had set up a try when he made an arching break, running through defenders and offloading to Monty Ioane who went over the line, but the score was chalked off for a forward pass.

SIX NATIONS STANDINGS

| | P | W | D | L | PF | PA | PD | PTS |
|--------------------|---|---|---|---|----|----|-----|-----|
| 1 🇫🇷 France | 1 | 1 | 0 | 0 | 50 | 10 | 40 | 5 |
| 2 🇬🇧 Wales | 1 | 1 | 0 | 0 | 21 | 16 | 5 | 4 |
| 3 🏴󠁧󠁢󠁥󠁮󠁧󠁿 Scotland | 1 | 1 | 0 | 0 | 11 | 6 | 5 | 4 |
| 4 🇮🇪 Ireland | 1 | 0 | 0 | 1 | 16 | 21 | -5 | 1 |
| 5 🏴󠁧󠁢󠁥󠁮󠁧󠁿 England | 1 | 0 | 0 | 1 | 6 | 11 | -5 | 1 |
| 6 🇮🇹 Italy | 1 | 0 | 0 | 1 | 10 | 50 | -40 | 0 |

JONNY MAY

Jonny May would have liked to have seen some more ball in England's 11-6 loss to Scotland. The winger made 20 metres in attack from six runs and filled in at the scrum when Billy Vunipola was yellow carded. May will hope to get more opportunity in space out wide next time out.



JAMES HANSON HEADS BACK HOME

James Hanson has returned home to Australia and has left Gloucester Rugby after three years at the club.

Initially joining the Cherry & Whites on a short-term deal back in December 2017, the Aussie signed a permanent deal later that year that led to 37 appearances for Gloucester Rugby.

Hanson leaves Kingsholm to pursue opportunities in his homeland with his young family and departs with the best wishes from all at Gloucester Rugby.

GLOUCESTER RUGBY SIGN SANTIAGO SOCINO



Following Hanson's imminent departure, Gloucester Rugby can confirm the arrival of Argentine international hooker Santiago Socino with immediate effect.

Twice capped by Argentina, the hooker will also arrive with Premiership experience under his belt, having made 34 appearances for Newcastle during his spell with the Falcons.

GLOUCESTER RUGBY PARTNERS WITH WCD GROUP FOR HYDRATION

Gloucester Rugby are proud to partner up with the WCD Group for hydration. In a bid to become more sustainable, a variety of environmentally friendly drinking water solutions that provide chilled and filtered water have been installed at Kingsholm Stadium for fans, staff and also the players to use.

The WCD Group has installed a number of high capacity, plumbed in refill water dispensers, bar taps and chillers for use on match days and for conference delegates. Water coolers are also in use at the club's training ground for players to refill sports bottles and stay hydrated.





MEN'S SQUAD

RUAN ACKERMANN



BACK ROW

CRX

MATIAS ALEMANNO



LOCK

THE CULLIMORE GROUP OF COMPANIES

OLLIE ATKINS



LOCK

AVAILABLE

MARK ATKINSON



CENTRE

THE CULLIMORE GROUP OF COMPANIES

FRASER BALMAIN



PROP

Electrical Solutions Direct Ltd

MATT BANAHAN



WINGER

AVAILABLE

SANTIAGO CARRERAS



FULLBACK

AVAILABLE

CHARLIE CHAPMAN



SCRUM HALF

The Mortgage Brain
Your mortgage made simple

FREDDIE CLARKE



BACK ROW

AVAILABLE

ALEX CRAIG



LOCK

LEXI YOUNG & FAMILY

LLOYD EVANS



FLY HALF

WCS Group
The H₂O experts
MARLBOROUGH Critical Services

JAMAL FORD-ROBINSON



PROP

THE CULLIMORE GROUP OF COMPANIES

CORNE FOURIE



PROP

AVAILABLE

MATT GARVEY



LOCK

AVAILABLE

JAMIE GIBSON



BACK ROW

AVAILABLE

TODD GLEAVE



HOOVER

F3 GROUP

CHRIS HARRIS



CENTRE

miworks
SOUTH WEST LTD

WILLI HEINZ



SCRUM HALF

AVAILABLE

TOM HUDSON



FULLBACK

AVAILABLE

CIARAN KNIGHT



PROP

Cellar Supplies

GIORGIO KVESLADZE



CENTRE

AVAILABLE

LEWIS LUDLOW



BACK ROW

Auto Air

JONNY MAY



WINGER

Auto Air

BEN MORGAN



BACK ROW

RENISHAW
apply innovation™

KYLE MOYLE



FULLBACK

AVAILABLE

| | | | | |
|--|--|---|--|---|
| SEB NAGLE-TAYLOR 1873 BACK ROW AVAILABLE | JAKE POLLEDRI 1873 BACK ROW MITSUBISHI MOTORS | VAL RAPAVA-RUSKIN PROP AVAILABLE | LOUIS REES-ZAMMIT WINGER BRUNSDON INSURANCE | JORDY REID BACK ROW AVAILABLE |
| TOM SEABROOK CENTRE DEAN CLOSE CHELTEMHAM SENIOR SCHOOL | ALEX SEVILLE PROP UK PROCESS VALVES | CHARLIE SHARPLES WINGER RSG CONSTRUCTION | JOE SIMPSON SCRUM HALF WLS SOLICITORS | JACK SINGLETON HOOKER AVAILABLE |
| ED SLATER LOCK K B Building Services | SANTIAGO SOCINO 1873 HOOKER THE CULLMORE GROUP OF COMPANIES | JACK STANLEY PROP MITSUBISHI MOTORS | OLLIE THORLEY WINGER ROCKET RENTALS | HENRY TRINDER CENTRE THE CULLMORE GROUP OF COMPANIES |
| BILLY TWELVETREES CENTRE AVAILABLE | STEPHEN VARNEY SCRUM HALF Miworks SOUTH WEST LTD | HENRY WALKER HOOKER MITSUBISHI MOTORS | JASON WOODWARD FULL BACK Davies & Partners SOLICITORS | |

BACKROOM STAFF

| | | | | | |
|---|--|---|---|---|--|
| GEORGE SKIVINGTON HEAD COACH | ALEX KING ATTACK COACH | DOM WALDOUCK DEFENCE COACH | TREVOR WOODMAN ASSISTANT COACH | TIM TAYLOR ASSISTANT COACH | DAN TOBIN HEAD OF PERFORMANCE |
| EOIN POWER HEAD OF MEDICAL | DARREN LEWIS HEAD OF PERFORMANCE ANALYSIS | WILL CARVALHO PERFORMANCE CHEF | SHAUN BULLOCK KIT MANAGER | PETER WALTON HEAD OF ACADEMY | |

LAST TIME WE MET



LAST TIME THE CHERRY AND WHITES PLAYED THE BEARS, GLOUCESTER RUGBY WERE BEATEN 24-33 IN AN EIGHT TRY THRILLER AT KINGSHOLM WHICH SAW BRISTOL TRAVEL BACK DOWN THE M5 WITH THE WIN.



Bristol got off to a solid start and Semi Radradra was on a different level, helping his side secure the try scoring bonus point before half time. The Cherry and Whites stayed in the fight and came back with two tries of their own through Fraser Balmain and Chris Harris before the break.

Gloucester Rugby's back three impressed with Jonny May, Louis Rees-Zammit and Ollie Thorley all utilising their speed and power throughout the game but despite their efforts, it was not enough.

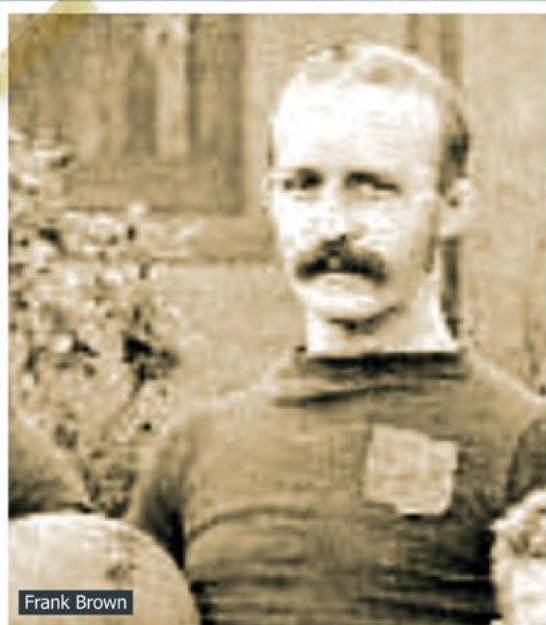
Bristol had built up quick points and the Cherry and Whites were forced to play catch up for the rest of the game.

A Ben Earl try in the second half continued Bristol's momentum but it wasn't long until things swung back in the favour of Gloucester Rugby. Steven Varney replaced Joe Simpson and immediately made an impact with a try underneath the Bears' sticks.

Ultimately, it was too little too late and the Cherry and Whites ended the game empty handed after 80 minutes at Kingsholm.

SHEDDING LIGHT ON GLOUCESTER RUGBY

Gloucester Rugby first held a match under floodlights on 30th January 1879, when the Club played its home games on the Council-owned ground at the Spa. It was against Rockleaze of Bristol. Four electric floodlights were erected, but one failed and another flickered on and off. Nevertheless the match went ahead with 16 players on each side, and Gloucester managed a good win by four goals and four tries to nil, including a hat trick for Frank Brown, the Club captain.



Frank Brown

This novel event attracted over two thousand spectators, who stumbled around the park in the dark, doing substantial damage to the shrubbery as they tried to find their way to the pitch. Although the Club regarded the occasion as a great success at the time, the horticultural consequences were taken very seriously by the Corporation's Park Committee.

Not wishing to exacerbate the situation, the Club played their last home fixture of the season on the King's School ground at Deans Walk, at the western end of what is now the Kingsholm ground. The Park Committee decided in April that tennis, cricket and bowls could continue on the Spa, but that football was banned, which had no immediate effect because the rugby season had ended.

The Club adopted a carrot and stick approach, offering to pay for repairs whilst also stirring up public opinion in their favour. They promoted the health benefits of the sport, and enlisted the support of the Crypt School, whose pupils also used the Spa for football. The Club proposed new crowd control measures, such as putting up canvas screens, and charging entry to the popular side (which would also have the effect of consolidating the Club's income from gate money).

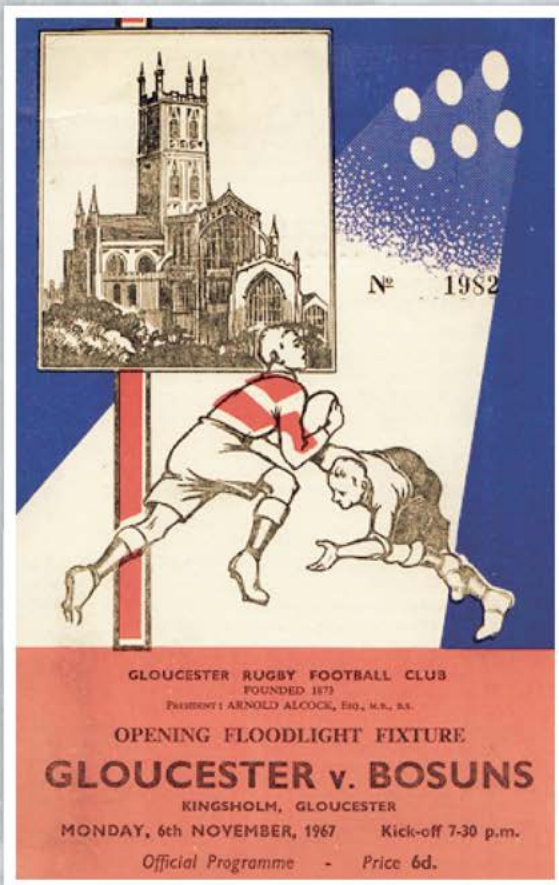
A strong delegation from the Club and Crypt School presented petitions with thousands of signatures, and argued their case at a meeting of the full Town Council. The Park Committee ban was overturned unanimously, and two weeks later the Club played the first match of the 1879-80 season on the Spa. But they had agreed not to play any more night-time matches.

Although the Club stopped playing on the Spa in 1891, the best part of a century passed before the next night-time match, when floodlights were installed at Kingsholm in 1967. They were formally switched on for a charity match to raise money for the Star Centre. The opposition were the Bosuns, an invitational side composed of internationals, trialists and county players.

A determined, energetic and well organised Gloucester team, led by Don Rutherford, giving his usual cultured performance at full-back, outplayed them. Mickey Booth and Terry Hopson showed their mastery at half-back, whilst John Bayliss and Ron Pitt exuded a bristling threat in the centre. Dick Smith, Gary White, Alan Brinn and Dave



Kingsholm in the 1960s



Owen gained control in the loose, Jim Jarrett ruled the line-outs, and Mike Burton and Jack Fowke dominated their opponents in the scrums.

Mickey Booth opened the scoring with a trademark

try scuttling round the blind side of a scrum, before Foice ran one in behind the posts; Rutherford converted both. The Bosuns fought back to score a try in the corner, but Booth dropped a goal from 35 yards to give Gloucester a comfortable cushion at half-time.

Gloucester added to their lead with tries from Booth and Hopson, and any remote prospect of a Bosuns revival was scotched as they lost two players to injury. In the last 15 minutes, White kicked through to score, John Groves went over from a tapped penalty, and Bayliss from a slick passing move, although the Bosuns had the last word with a converted try.

Gloucester thus enjoyed a comfortable win, 34-8, scoring seven tries to two, the lights worked well, a considerable feather in the Club's cap, and led to an expansion of the fixture list in subsequent seasons as more midweek games could be played.

The expansion of rugby coverage on television contributed to a new and better set of floodlights being installed in 1994, and they in turn were replaced when the new stadium was built in 2007. Kingsholm having been selected as a venue for RWC 2015, various improvements to the ground were funded by the tournament organisers, which were afterwards left in place if the Club so wished. Amongst these were new bulbs for the floodlights with twice the previous luminosity. These are quite acceptable at reduced power but can be turned up fully as required for televised matches, which certainly adds to the sense of theatre at a night time match.



Kingsholm during the 2015 Rugby World Cup

ANDY HAZELL – SEVEN YEARS SINCE THE FORMIDABLE FLANKER RETIRED



20

ANDY HAZELL IS A CHERRY AND WHITE LEGEND. GLOUCESTER THROUGH AND THROUGH, HE PLAYED 268 1ST XV GAMES IN A CAREER SPANNING ACROSS 17 SEASONS. IT IS NOW SEVEN YEARS SINCE THE FORMIDABLE FLANKER RETIRED, PROVIDING THE PERFECT OPPORTUNITY TO LOOK BACK ON THE INCREDIBLE CAREER FROM THE ONE CLUB MAN.

Making his debut for the club in 1997, Hazell retired in 2014 having fulfilled his childhood dream of playing for the club he grew up watching.

"It's the old cliché but I first went to Kingsholm with my gramps," Hazell says as he remembers his first visit to the stadium. "All I wanted to do was play for Gloucester. To do that and stay there is what I'm most proud of really.

"That's one of the things I took from my career, in my 17th season I gave the same amount of effort in preseason and throughout the season as I did in my first. I think that's why I was I was lucky enough to stay there so long."

As a local lad, Hazell was often found down at the rugby and picked up the passion from what he saw from The Shed.

"I used to go to Kingsholm with my gramps and stand in The Shed. I was a young lad and coming from Gloucester, rugby is everything really. I know that's a crazy thing to say but it's massive. People love it and it's fundamental to the city.



"I remember going as a young lad and experiencing The Shed and just being totally enthralled by it all and just dreaming of being able to play for Gloucester."

In 1997, the dream came true and he pulled on the Cherry and White shirt for the first time in a Premiership fixture against Newcastle at Kingsholm.

"It was a special moment for me personally," Hazell says. "All my family support the club and did before I decided to play so it was nice for everyone. It always kept a bit of pressure on being from Gloucester with cousins, friends and parents always watching and judging! It was great really to be able to share that career with all those people looking back."

"My nan used to come to every game. I went to the rugby with my gramp when I was young and unfortunately, he passed away before I first started to play. My nan used to come in his place in reality, so it was a big thing for her as well. She'd come to away games and she was one of the biggest fans."

Hazell is regarded by many Cherry and White supporters to be one of the best openside flankers to have ever taken to the field at Kingsholm. Part of what made him so popular was how obvious it was that the club ran through his veins.

"I absolutely loved all of it. I couldn't say I had a favourite moment because I loved all of it," he says when asked to pick a highlight. "I loved the day to day, I loved having a laugh with the lads and taking the mick out of the boys, the banter."

"I felt so honoured and proud every time I put on the shirt. It's hard to say there's one particular moment, I enjoyed all of it. Even when I'd get abused in Tesco by the fans! They'd say we didn't play very well, all of those things added up to it all."

Hazell misses the interaction with the fans and has plenty of stories of how the Cherry and White fans would let him know what they thought of recent results.

"I remember, I was in Tesco and one of the fans came up to me and said, 'That was absolutely rubbish at the weekend,' and I said that I totally

agreed! They didn't know what to say! At the end of the day, I'm a Gloucester Rugby fan as well so I think he was taken aback!

"That's how it was. Any bad performance really made a difference to the fans. It put extra pressure on as a group, which wasn't a bad thing."

To so many, Gloucester Rugby is the heartbeat of the city and a good win can raise the spirits of everyone, from Longlevens to Quedgeley.

"When the rugby club is doing well, the city thrives off it. I know it's a crazy thing to say but it really does. A good win for Gloucester at Kingsholm on a Saturday really sets the city up for a good week."

"If Gloucester lose, it's the most stupid thing ever, but I go to bed and I'll think about the game! I know I've been retired seven years and it's absolutely ridiculous. I think about the game even when I'm not involved. I don't watch masses of rugby, of course I watch Gloucester, but I do think about the game even though I'm not involved. I have no doubt that's what the fans do as well."



"I'm Gloucester through and through. I love the rugby and I always will. It's my team and I'll support them all the way through. I'm like everyone, I want the club to do well."

Hazell won seven England caps throughout his career but said when he retired that he would have swapped them all for one Premiership trophy with Gloucester Rugby.

"Winning an England cap is phenomenal, and I don't want to take anything away from that, but for me, I'd rather have won the Premiership with Gloucester. I think it's because I have

such a big family throughout the city. When you get an England cap, I've got no doubt that they're all proud but to have won the Premiership with Gloucester would have just been amazing."

Playing in the club's most successful period, Hazell came so close to achieving his goal. He helped the club lift the Powergen Cup in 2003, the European Challenge Cup in 2006 and the LV Cup in 2011. Despite reaching the Premiership final and topping the league, Gloucester Rugby always fell short at the final hurdle.

"So close but so far! I just hope that I can eventually see Gloucester Rugby lift the trophy. That's what I'd love to see as a fan now."



MATIAS ALEMANNO



THE PAST 12 MONTHS HAVE BEEN DIFFICULT, STRANGE AND NEW FOR EVERYONE. IT'S BEEN EVEN STRANGER FOR GLOUCESTER RUGBY'S MATIAS ALEMANNO WHO JOINED THE CLUB LAST SUMMER, TRAVELLING HALFWAY AROUND THE WORLD TO JOIN THE CHERRY AND WHITES IN THE MIDDLE OF THE COVID-19 PANDEMIC

22

Making an immediate impact to the Gloucester Rugby side, Alemanno has faced some challenges whilst settling into a new country and the current restrictions haven't helped! Despite everything that's been going on he has enjoyed the challenge of coming to the West Country with his wife, who is expecting a baby.

The 29-year-old Argentine was born in Cordoba and grew up playing rugby from a young age. The second row joined the Cherry and Whites from the Jaguares in July and is settling in well to his new life in Gloucester.

"I started playing rugby when I was very young at around five years old at a club called La Tablada in Cordoba, Argentina," Alemanno says. "It was my dad who took me the first time. He likes sport a lot, especially rugby, and it was he who inspired me because I always wanted to enjoy this sport like him."

Standing at 6ft 5in, Alemanno was destined for life as a lock and went from strength to strength playing for La Tablada, Pampas XV and then the Jaguares. Life was very different in Argentina but he is enjoying the test of a new opportunity.

"Moving to England has been a great choice but also a great challenge,"

Alemanno says. "England is a beautiful country with a great quality of life, but it is a very big challenge for me and my family because it is very different from Argentina. The language and the weather being the two biggest changes!

"I have always liked English rugby a lot, the Premiership is a very competitive competition, and I chose Gloucester because it is a club with a great history in English rugby and a lot of ambition."

It hasn't just been the change in language that Alemanno has had to deal with. The northern hemisphere style of play is much different to what he's played before.

"The difference between English rugby and Super Rugby is that here, more tactical and strategic rugby is played. They give much importance to the set piece whilst Super Rugby is a more dynamic and fast-paced game."

With Spanish as his native tongue, Alemanno has been forced to learn a new language, something he has picked up quickly. He's even found somebody in the squad who speaks Spanish and can help him.





"My English is not very good but day by day I am improving," he says. "When I arrived in England, my greatest challenge was, and is, to overcome the language barrier. Luckily the team is always ready to help me with whatever I need. I am studying and every day I feel better."

"It is a great challenge but Jack Clement, who has lived in Spain and speaks perfect Spanish, helps me a lot."

Gloucester Rugby have a strong Argentinian representation with Alemanno, Santiago Carreras and more recently Santiago Socino joining the squad.

"It is very nice to have friends and colleagues from the same country sharing a team. Adaptation becomes easier," the second row says.

In the Northampton Saints game, Carreras took a nasty blow to the head and Matias was seen kneeling by the winger as he received treatment showing how close they are as teammates.

"It was a very hard moment," he says. "I just wanted to know if he was okay, be calm that it had only been a blow and make sure Santi felt calm and accompanied and also try to translate what the doctors said."

Fortunately, Carreras was ok and they will both be in action against Bristol where they will be hoping to turn around the Cherry and Whites' recent run of results.

"I think that Gloucester Rugby is going through a time of change and reconstruction, with many new people

who have come to the club and important people who have left the club. I am sure that the club will soon find good results because we work hard and it is an ambitious club with a lot of talent."

"Bristol are proven to be one of the best teams in the tournament and that is why it will be a great challenge to face them. I am very eager and excited to play."

One thing that Alemanno is yet to experience is the roar of a packed out Shed in the Cherry and White shirt. However, he has played there for his country in the 2015 Rugby World Cup so knows what to expect when fans are allowed to return to stadiums.

"Gloucester have the best Premiership fans and I can't wait to play at Kingsholm with them," he says. "It would be an incredible atmosphere. It is a very special stadium with a lot of history in English rugby."

"I had already had the opportunity to play in Kingsholm at Rugby World Cup in 2015 vs Georgia. It was wonderful, it is a stadium that I really like."

Alemanno has over 60 caps for Argentina and has established himself as one of the best second rows in world rugby. Having played across the globe, he already knows that playing rugby in Gloucester is something special.

"Gloucester is a city that breathes rugby, and they are very fanatical, it is very important that people are encouraged in these difficult moments. I am aware that the results are not good but we are working hard so that good times arrive."



LONDON IRISH GLOUCESTER RUGBY

32
26



GLOUCESTER RUGBY WERE IN ACTION AGAINST LONDON IRISH LAST WEEKEND AND CAME AWAY FROM THE BRENTFORD COMMUNITY STADIUM WITH TWO LOSING BONUS POINTS.

It was a very tight first half and it wasn't an ideal start for Gloucester Rugby who conceded a try within the opening minute after Willi Heinz's box kick was charged down and Blair Cowan went over to score. Paddy Jackson slotted the conversion to give his side a 7-point lead.

However, it wasn't long until the Cherry and Whites were scoring themselves. From the kick-off, Ollie Thorley put serious pressure on the catcher and Jordy Reid collected the ball and tapped it on to Henry Trinder who went over to score. Billy Twelvetrees nailed the conversion to make it level.

Next to strike a blow were London Irish who scored through Ollie Hassell-Collins after a period of good attacking play from the home side. Jackson missed the conversion meaning that Gloucester Rugby had an opportunity to take the lead with their next score.

Alex Craig got over for the Cherry and Whites and Twelvetrees' conversion gave the side a two-point lead at the break.

After half time, London Irish scored three further tries through Blair Cowan, Agustin Creevy and Tom Parton with Paddy Jackson slotting one conversion and a penalty.

Mark Atkinson got over for Gloucester Rugby, wrestling his way over the line from close range but going into the last three minutes of the game Irish were 32-21 up.

With just a few minutes left on the clock, Alex Craig went over for his second try to give Gloucester Rugby the two losing bonus points meaning the Cherry and Whites reduce the gap to Worcester at the bottom of the league.





VS



38

| T | P | C | D | |
|---|---|---|---|-----------------------------|
| | | | | Jason WOODWARD 15 |
| | | | | Santiago CARRERAS 14 |
| | | | | Henry TRINDER 13 |
| | | | | Mark ATKINSON 12 |
| | | | | Ollie THORLEY 11 |
| | | | | Billy TWELVETREES 10 |
| | | | | Willi HEINZ 9 |
| | | | | Val RAPAVA-RUSKIN 1 |
| | | | | Henry WALKER 2 |
| | | | | Fraser BALMAIN 3 |
| | | | | Matt GARVEY 4 |
| | | | | Matias ALEMANNO 5 |
| | | | | Jamie GIBSON 6 |
| | | | | Lewis LUDLOW (C) 7 |
| | | | | Freddie CLARKE 8 |

REPLACEMENTS

| | | | | |
|--|--|--|--|-------------------------------|
| | | | | Santiago SOCINO 16 |
| | | | | Alex SEVILLE 17 |
| | | | | Jamal FORD-ROBINSON 18 |
| | | | | Alex CRAIG 19 |
| | | | | Ben MORGAN 20 |
| | | | | Charlie CHAPMAN 21 |
| | | | | Georgi KVESELADZE 22 |
| | | | | Kyle MOYLE 23 |

POSITION

| |
|-------------------|
| FULL BACK |
| RIGHT WING |
| OUTSIDE CENTRE |
| INSIDE CENTRE |
| LEFT WING |
| FLY-HALF |
| SCRUM-HALF |
| LOOSEHEAD PROP |
| HOOVER |
| TIGHTHEAD PROP |
| LOCK |
| LOCK |
| BLINDSIDE FLANKER |
| OPENSIDE FLANKER |
| NUMBER 8 |

| T | P | C | D | |
|---|---|---|---|--------------------------------|
| | | | | 15 Charles PIUTAU |
| | | | | 14 Luke MORAHAN |
| | | | | 13 Piers O'CONOR |
| | | | | 12 Siale PIUTAU |
| | | | | 11 Henry PURDY |
| | | | | 10 Ioan LLOYD |
| | | | | 9 Andy UREN |
| | | | | 1 Nahuel TETAZ CHAPARRO |
| | | | | 2 Bryan BYRNE |
| | | | | 3 John AFOA (C) |
| | | | | 4 Dave ATTWOOD |
| | | | | 5 Chris VUI |
| | | | | 6 Jake HEENAN |
| | | | | 7 Dan THOMAS |
| | | | | 8 Nathan HUGHES |

REPLACEMENTS

| | | | | |
|--|--|--|--|--------------------------|
| | | | | 16 Will CAPON |
| | | | | 17 Jake WOOLMORE |
| | | | | 18 Jake ARMSTRONG |
| | | | | 19 Ed HOLMES |
| | | | | 20 Fitz HARDING |
| | | | | 21 Tom KESSELL |
| | | | | 22 Sam BEDLOW |
| | | | | 23 Alapati LEIUA |



MATCH OFFICIALS

Referee:
Tom Foley

Assistant Referees:
Simon Harding & Simon McConnell

TMO:
David Rose

Citing Officer:
Grant Seely

