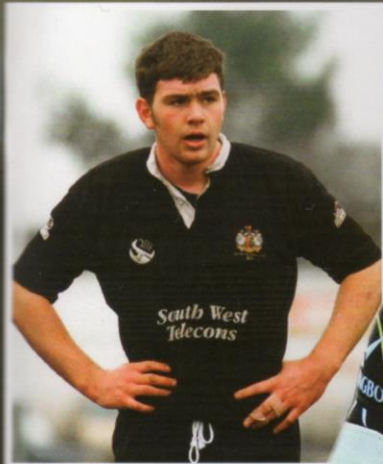


Chiefs

Match day programme

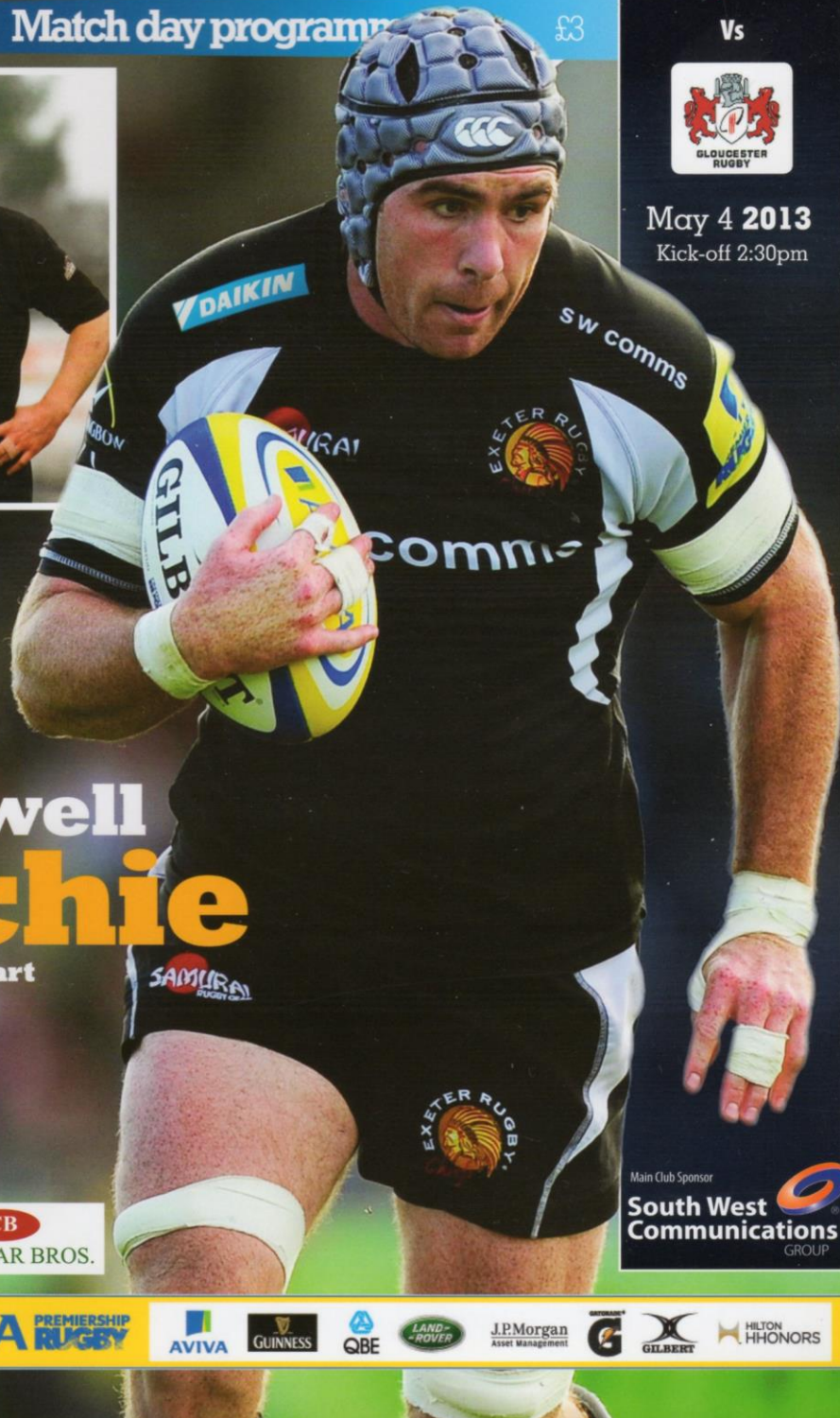


Vs



May 4 2013

Kick-off 2:30pm



Farewell Richie

Chiefs stalwart
retires P38-40

Joint Match Sponsors



Main Club Sponsor



Today's Opposition

After a close season of upheaval at Kingsholm, Gloucester Rugby's 2012-13 season draws to a close this afternoon at Sandy Park, after a roller coaster ride!

Following what can best be described as a disappointing end to 2011-12, the club was rocked by the sudden, and unexpected, departure of Head Coach Bryan Redpath followed by the tragic passing of John Brain.

The Gloucester Rugby board needed to act quickly and identify a new figurehead to lead the club into a new era.

That man was Nigel Davies, who was appointed Director of Rugby in early June, and the former Scarlets supremo had to act fast to assemble his back room staff with only Carl Hogg remaining from last season.

In came Paul Moriarty as Defence Coach, Tony Windo as Scrum Coach and Mike Tindall was offered a new contract, which saw the World Cup winner take his first steps into the world of coaching as well as continuing to play.

There was also the small matter of integrating a number of new signings into the squad and restoring confidence after 2011-12 finished with a series of defeats.

It's a cliché, but everyone at the club started out taking things one game at a time.

It was a new look coaching set up, a new look side and no-one was under any illusions as the season kicked off.

This was a long term project, it would take time and there were bound to be some bumpy moments along the way.

The Aviva Premiership is obviously a tough place to learn and develop, but the Cherry and Whites have made a good fist of it.

The season got off to a disappointing start with a home defeat against Northampton, but Gloucester have since made themselves a difficult side to beat, taking at least a losing bonus point from every Premiership fixture to date bar one.

There have also been some notable wins, particularly on the road, which has been something of an Achilles heel in recent seasons. Away wins at London Irish, London Welsh and Northampton Saints helped to keep the push going for a play-off place.

The play-off aspirations came to an end a couple of weeks ago, but at least Gloucester are in the fortunate position of knowing that they will be competing in the Heineken Cup again next season, following the superb win over Saracens.

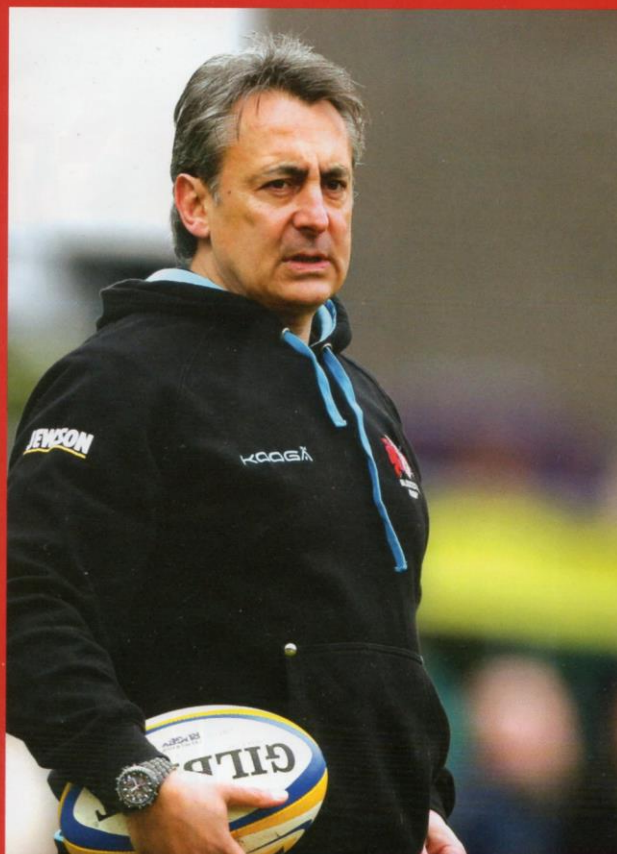


It will be a welcome return to Europe's top table for Nigel Davies' side, although the Amlin Challenge Cup did prove to be a positive experience overall this season.

A perfect six wins from six matches record in the pool stages of the Amlin Challenge Cup, saw the Cherry and Whites qualify for the knock out stages, and welcomed Biarritz Olympique to Kingsholm for the first home European quarter final in five years.

Today, however, is about keeping going right up to the very end of the season and trying to finish on a positive note – no easy task against a Chiefs side looking to secure their own Heineken Cup spot.

May the best team win.



Director of Rugby Nigel Davies

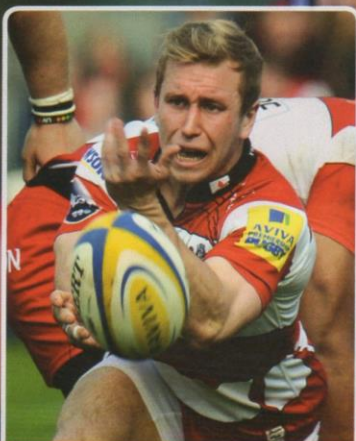
Nigel Davies joined Gloucester Rugby as Director of Rugby in June 2012, having been the Head Coach at Welsh region the Scarlets since June 2008.

The Llanelli born and bred centre won 29 caps for his country between 1988 and 1997, before joining the Welsh national coaching set up under Gareth Jenkins.

Davies is one of the very few Welsh players to have both coached and captained his country.

He has been associated with top-flight rugby for more than 28 years as a player and then coach, and has been tasked with returning Gloucester to the pinnacle of the English club game.

Marked men



Dan Robson

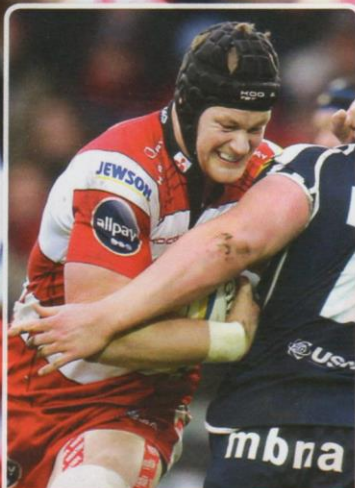
Position	Scrum Half
Height	1.71m (5'7")
Weight	77kg (12st 1lb)
DOB	14/03/92
Hons.	-

20 year old scrum half Robson is one of the most exciting talents to emerge from the Gloucester Rugby Academy in recent seasons.

Although he wears the number nine shirt for Gloucester, he is versatile enough to turn out at fly half as he did regularly last season for Hartpury RFC.

Has played for England through the respective age groups including featuring for England U20s at the 2011 and 2012 IRB Junior World Championships.

Has made 28 appearances in total for the first team so far this season, scored his first try in the Aviva Premiership against London Wasps and was voted Supporters Young Player of the Season.



Tom Savage

Position	Lock
Height	1.96m (6' 5")
Weight	115kg (18st 1lb)
DOB	18/04/89
Hons.	-

Tom Savage is making a big name for himself in only his second season in professional rugby.

Formerly captain of Hartpury RFC, the 24 year old asked to train with Gloucester Rugby in the summer of 2011 and impressed enough to quickly be offered a full contract.

Capable of playing in the second row or on the blindside flank, he went on to make 18 first team appearances in total in his first full season with the club and signed a new, long term contract earlier this season.

He has already bettered that appearance total so far in 2012-13 and has skippered the side on a number of occasions.



Sione Kalamafoni

Position	Back Row
Height	1.96m (6' 5")
Weight	8112kg (17st 9lb)
DOB	18/05/88
Hons.	Tonga

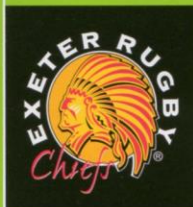
The Tongan international back row forward has been a revelation in his first season with Gloucester Rugby, having arrived at Kingsholm after two seasons with Championship side Nottingham.

He started three of his country's four matches in Rugby World Cup 2011 as blindside flanker and appeared as a replacement in the fourth.

He particularly caught the eye in the memorable 19-14 victory over France when he was named Man of the Match.

A big ball carrier in attack and a tough tackler in defence, Kalamafoni has quickly established himself as a first team regular and become a favourite of the Gloucester supporters who named him their Player of the Season recently.

Teams line up



Replacements

16 Chris Whitehead
17 Carl Rimmer
18 Craig Mitchell
19 Aly Muldowney
20 Dave Ewers
21 Will Chudley
22 Henry Slade
23 Ian Whitten



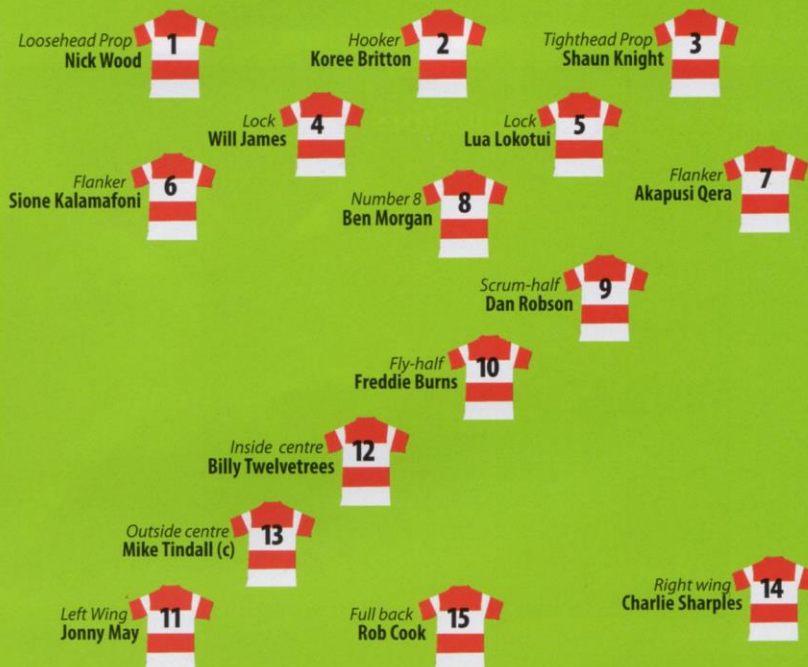
Replacements

16 Darren Dawiduk
17 Dan Murphy
18 Yann Thomas
19 Tom Savage
20 Andy Hazell
21 Dave Lewis
22 Henry Trinder
23 Shane Monahan

Today's Sponsors

CONIBEAR BROS.

CB



Nuffield Health



Vision



Officials

Sponsored by



Referee: Greg Garner
Touch Judges: Paul Burton & Pete Huckle
4th Official: David Rose
TMO: Geoff Warren
TK: Laurie Bryant

147