



CHERRY & WHITES



GLoucester RUGBY v WORCESTER WARRIORS

GALLAGHER PREMIERSHIP
27 FEBRUARY 2021
3.15PM

DIGITAL DOWNLOAD —
FREE FOR THE 2020-21 SEASON

 **mitsubishi MOTORS**

MAIN CLUB PARTNER



Gallagher

**PREMIERSHIP
RUGBY**





GLoucester Rugby

KINGSHOLM STADIUM, KINGSHOLM
ROAD GLOUCESTER GL1 3AX

www.gloucester rugby.co.uk

Facebook gloucester rugby

Twitter @gloucester rugby

Main Switchboard

01452 872250

Customer Email

customerservices@gloucester rugby.co.uk

Club President: Fred Reed

PLAYING DEPARTMENT

Head Coach: George Skivington

Team Manager: Sam Raven

Rugby Administrator: Karen Harrington

CLUB MANAGEMENT

Chairman: Martin St. Quinton

CEO: Lance Bradley

COO: Alex Brown

Interim Finance Director: Richard Weller

Marketing Manager: Lucy Nottage

Media & Digital Communications

Manager: Tim Rogers

Head of Venue Sales: Angela Sanders

Head of Partnerships: Mike Thomas

Commercial Sales Manager: Tom Adams

Operations Manager: Helen Grayer

Finance Manager: Matt Mulcahy

HR Manager: Zofia Karkola-Lubacha

PROGRAMME

Lead Editor: Louis Shaw

Co-editor: Tim Rogers

Photography: Martin Bennett, Getty Images

Design: Daniel Parker

Produced by: Amberley Court Associates

aca

CREATIVE DESIGN, PRINT & PUBLISHING



20



10



18

- 07 Introduction
- 10 Club News
- 12 Men's Squad
- 14 In Opposition
- 17 Last Time We Met
- 18 Gloucester Rugby Heritage
- 20 Feature Interview
- 23 Community
- 25 Academy Squad
- 26 Academy Update
- 29 Gloucester-Hartpury Women Squad
- 30 Gloucester-Hartpury Women Feature
- 34 Match Action / Bath Rugby
- 38 Team Line Ups



26



34

03

INTRODUCTION



COLUMN SPONSORED BY



WELCOME TO GLOUCESTER RUGBY'S DIGITAL PROGRAMME FOR THE M5 DERBY AGAINST WORCESTER WARRIORS AT KINGSHOLM.

It's Round 11 of the Gallagher Premiership and a chance for the Cherry and Whites to improve their league position with a good result against Alan Solomons' side who currently sit 11th.

It's the third local derby in a row for Gloucester Rugby who played Bath last time out and Bristol in Round 9. After a handful of narrow losses, the Cherry and Whites will hope to execute the gameplan to perfection on gameday and give the Squad of Thousands watching from home something to cheer about.

In the week leading up to the game, Lance Bradley sat down with Colin Boag, who asked the Club's CEO questions on behalf of ShedWeb.

Bradley spoke in depth about all things Gloucester Rugby, from recent performances on the pitch, to the Club's plans for the future and the vision the Cherry and Whites have going forward.

With the COVID-19 road map announced on Monday, all of us at



**TO WATCH THE
FULL 50-MINUTE
INTERVIEW YOU
CAN CLICK HERE**

Gloucester Rugby are looking forward to welcoming supporters back to Kingsholm as soon as we can but know that we can count on your continued support from home in the meantime.

**“ALL OF US
AT GLOUCESTER
RUGBY ARE
LOOKING
FORWARD TO
WELCOMING
SUPPORTERS
BACK TO
KINGSHOLM AS
SOON AS WE
CAN”**

WILLI HEINZ SET TO DEPART GLOUCESTER RUGBY AT THE END OF THE SEASON

Gloucester Rugby can confirm that Willi Heinz will be leaving the Club at the end of this season to join Worcester Warriors ahead of the 2021-22 campaign.

Heinz, 34, initially joined the Cherry & Whites ahead of the 2015-16 season and has since developed into a fully-fledged England international. The scrum-half was selected for the 2019 Rugby World Cup in Japan, only missing out on a place in the final due to injury.

Over his six years at Kingsholm so far, Heinz has made 90 appearances for the Club and was keen to place his thanks on record to all those who have made his time in Gloucester so enjoyable.

"I've really enjoyed my six seasons at Gloucester Rugby, and would like to thank the fans, my fellow players, the coaches and support staff, as well as Martin and the other board members.



"I've thoroughly enjoyed my time at what is an iconic club in English rugby. I still am entirely committed to the team until the end of the season, and hope that before it ends, we can run out in front of fans at Kingsholm once more.

"It's been a great honour having had the opportunity to captain the side, and my family and I have made friends for life during our time at Kingsholm."

THREE GLOUCESTER RUGBY PLAYERS COMMIT FUTURE TO KINGSHOLM



Jordy Reid, Henry Walker and Jamal Ford-Robinson have all pledged their future to Gloucester Rugby having signed contract extensions.

Reid joined Gloucester Rugby from Ealing last summer and despite only being early in his career with Gloucester Rugby, in



just 15 appearances, the hard-hitting back-rower has already made a name for himself in the Premiership.

Walker, 22, has made played 40 times for the Cherry & Whites having signed his first senior deal in 2019, having progressed via the Gloucester Rugby Academy



and is looking forward to more game time with the club in the future.

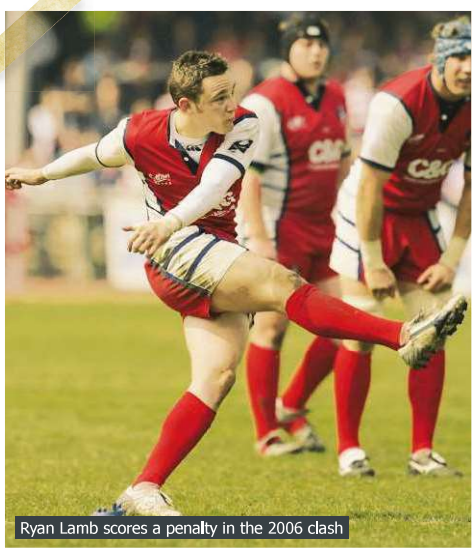
Ford-Robinson is a fan favourite and with the valuable ability to play both loose and tighthead prop, he'll be key to George Skivington's plans going forward.

WELCOME TO WORCESTER WARRIORS

WORCESTER RUGBY CLUB WAS FOUNDED IN 1871, A FULL TWO YEARS BEFORE GLOUCESTER RUGBY. THEIR FIRST GAME WAS ON 8 NOVEMBER 1871 AND THE OPPONENTS WERE WORCESTER ARTILLERY.

The club must have prospered quickly, because by November 1877, Worcester and Gloucester met for the first time. Travelling to Worcester, Gloucester achieved an overwhelming win by 8 goals and 4 tries to nil. The Gloucester team was led by Frank Brown, who captained the club from 1876 to 1883. Also, in the side were the legendary Boughton brothers, Hubert and William. Frank Brown scored four tries, William three and Hubert one, who also kicked eight conversions.

The next time the clubs met was on 12 November 1881, again at Worcester, and the winning margin in favour of Gloucester was much tighter, at one goal and two tries to nil. However, there were problems. The home crowd prevented the second conversion from being attempted, and had invaded the pitch several times during the game. Whether this caused a fracture between the clubs is unknown, but they did not play again (at least at first team level) for 117 years.



Ryan Lamb scores a penalty in the 2006 clash

The Worcester club folded in 1896, only to be reformed in 1908. By 1930 they were back on Gloucester's fixture list, but playing the United. This continued on a regular basis until the late fifties. Worcester moved to Sixways in September 1975, and soon after the first national leagues began, they started their inexorable rise. In 1990 they won North Midlands 1, and by 1998 had reached League 1 (now known as the Championship). A lot of this success was due to the investment provided by owner Cecil Duckworth. Worcester finally attained Premiership status in 2004, with John Brain as Director of Rugby. Two years later the Warriors had a good run in the European Challenge Cup.

22 April 2006, Kingsholm European Challenge Cup Semi Final Gloucester 31 Worcester 23

The Gloucester team was: Ollie Morgan; James Simpson-Daniel, Mike Tindall, Anthony Allan, Mark Foster; Ryan Lamb, Peter Richards; Patrice Collazo, Mefin Davies, Gary Powell, Adam Eustace, Alex Brown, Peter Buxton (captain), Andy Hazell, James Forrester. Replacements: Jack Forster, Jonathan Pendlebury, Luke Narraway, Ludovic Mercier, James Bailey.

The Cherry & Whites got off to a quick start with two penalties from Ryan Lamb, and a try from Anthony Allen, which Lamb also converted. Worcester fought back bravely with tries from Shane Drahm and Pat Sanderson. The former converted the tries and added a penalty so that at half-time the Warriors were leading 17-13. The home side were further embarrassed as Drahm dropped a goal as well as kicking another penalty. Worcester were now two scores to the good and an upset seemed likely. A penalty from Ludovic Mercier left Gloucester trailing 23-16 well into the second half. However, tries from James Simpson-Daniel and Mark Foster put Gloucester back in the lead at 28-23, whilst a last-minute penalty from Lamb was the icing on the cake.

Worcester went one better in 2008 and reached the final of the Challenge Cup only to lose 24-16 to Bath. The game was played at Kingsholm.

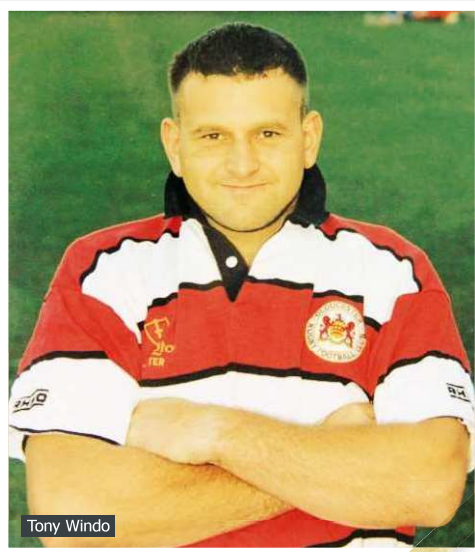
Gloucester/Worcester Players

There are several players who have represented both dubs. Full-back Tim Smith, played 351 times for Gloucester from 1982-96, scoring 2703 points. He then went to Worcester and in three seasons helped them move up the leagues from National Division 4 (North) to League 1. In his first season he scored 242 points breaking the club record.

Prop Tony Windo, a Shed favourite, played eleven seasons at Kingsholm before moving on to Worcester in 1999. He was a regular for a further nine seasons there, before he made his final appearance in 2008, when Worcester, as mentioned earlier, played Bath in the final of the European Challenge Cup, ironically, at Kingsholm. He had been such a stalwart for the Warriors that he was awarded a testimonial game in August 2008. Tony went on to join the coaching staff at Sixways.



Tim Smith



Tony Windo

Ryan Lamb, the mercurial fly-half who scored 574 points for Gloucester, had left for spells at London Irish, Northampton and Leicester, before arriving at Sixways in the middle of the 2013-14 season. By the last game Worcester were already doomed to relegation, having only won one game. The final game was against Gloucester, and an inspired Lamb scored a try, two conversions and three penalties, as the Warriors won 28-27. There was more drama the following season, when Worcester played Bristol in the Championship final (played over two legs) to determine which team would gain promotion to the Premiership. With ten minutes of the second leg to go, Bristol were two scores clear, only for Worcester to touch down twice, leaving the conversion to decide if Worcester would prevail. Ryan Lamb stepped up to put the ball between the posts for a remarkable victory.



Ryan Lamb

There has been speculation recently about the merits or otherwise of relegation. With so many games already cancelled through Covid infections, and points awarded to teams which do not take to the field, it seemed unfair that dubs which had played every game were being disadvantaged, and it is only equitable that, for this season at least, relegation has been suspended. It has been argued that it would render many games uninteresting when relegation was not an issue. Currently, Worcester and Gloucester are the bottom two. There is no danger that with this local derby, there will be any lack of passion on the field. If only the Shed could be full as well!



KYLE MOYLE



KYLE MOYLE HAS BEEN A CONSISTENT OPERATOR IN THE BACK THREE FOR GLOUCESTER RUGBY THIS SEASON, PLAYING IN SUCH A WAY THAT IT WOULD BE EASY TO ASSUME HE'D SPENT YEARS PLAYING AT A PREMIERSHIP LEVEL. HAVING INITIALLY JOINED THE CLUB ON LOAN FROM CORNISH PIRATES, MOYLE IMPRESSED ENOUGH TO EARN A FULL-TIME PROFESSIONAL CONTRACT AT KINGSHOLM WHERE HE IS CONTINUING TO IMPRESS.

20



Having played in the Championship for eight years, Moyle quickly earned a reputation as being one of the best fullbacks in the second division of English rugby, picking up Player of the Year awards for two years in a row.

It is therefore no surprise at how well and how quickly he has settled into life at Gloucester Rugby.

"I got a call from my coach at Pirates and he told me that Gloucester needed some cover as they had picked up a few injuries and asked me if I'd like to go on loan for a couple of months until around Christmas which was when the Championship was due to start," Moyle says when asked about how his move to the Cherry and Whites came about. "We were only training down Pirates; we weren't playing or anything, so it was a great opportunity to actually get back in the swing of rugby and actually play."

"Now what's happened, I could never have dreamt of! I was just happy to come up and get the opportunity to train and be coached by such good people at the club and to get that Premiership experience is something that you always want as a rugby player. To get that was pretty cool and to get welcomed the way I did was something I didn't expect. You never know what you're going to walk into or how people will react and treat you. From the first day, everyone was so kind and open and welcoming that I just felt part of the team straight away."

Moyle initially joined the Cherry and Whites on loan but after impressing early on, the Cornishman earned himself a permanent contract and has played in all but one game so far this season.

"To get rewarded after the two-month period with the contract was a special moment," he says. "I was fortunate that I actually got to play a few games whilst on the loan period. With Jason (Woodward) picking up an injury that gave me a chance to get to play and get some game time and show the coaches my ability and gave me a chance to put my best foot forward to try and earn a contract. Around Christmas time, a contract came in and I was absolutely delighted to actually call myself a Premiership player which was a real nice feeling after so many years of wanting that. To play in the Premiership was a special moment for me."

Playing in the Premiership is every young rugby player's dream and growing up in Cornwall, all Moyle wanted to do was play rugby.

"I started playing for Penzance and Newlyn when I was about seven years old. I went down there on a Friday night and just absolutely loved it. My friends were all there so it was a good social thing for me and it just grew into loving rugby. I ended up playing in the mini junior's section, through Colts before I went on to Truro College. That's how rugby started for me, through that friendship group and just really enjoying it."

Moyle did not follow the usual path to top flight rugby and it wasn't until later on that he realised that playing professional rugby was something that he could have a go at.

"I never really saw rugby as a full-time opportunity, for me it was just something that I enjoyed doing. When I got to college and saw people go on to get contracts, that made me think that maybe this could happen. It didn't happen with Exeter, so I had to leave college and play for Launceston Rugby Club. Then going back and playing local rugby at St Ives was where I got picked up by the Cornish Pirates and that's where I became full time at 19. It's a bit later than most but I missed the academy route and went into rugby with a full-time contract with Pirates."

Moyle has very much enjoyed the move to the Premiership and has been enjoying every moment of his time at the club.

"The highlight is getting to train every day with people I watched on TV for years. I'd watch them every week and now I call them my teammates and come in and say hello to them every day. Getting to play against some big names as well, it's pretty special."

The fullback has also enjoyed the move off the field but is looking forward to exploring the local area more when the COVID restrictions are eased.

"I was living in Cornwall, where I've lived my whole life, I've never actually moved outside of Cornwall! It was very strange! I literally moved to Cheltenham on the day of lockdown! So I've come up into the flat and haven't got to experience any part of Cheltenham apart from nipping to a coffee shop and getting a takeaway coffee and walking around the park. So that's something I'm really looking forward to. I spoke to a few players to get the gist of what it's like and I'm really looking forward to when

restrictions lift a little bit so me and my partner can explore Cheltenham a little bit more and really start to enjoy our new life up here."

A further difficulty of the COVID restrictions for a player joining a new team is the lack of opportunity to really get to know your teammates. With the restrictions in place, Moyle was forced to meet everyone at training and hasn't been able to socialise and get to know his teammates as he usually would.

"I played club rugby before I was professional when I was 18 and it's such a big part of rugby. There's nothing better than getting together

doing good things at the moment. It's just little bits in the game that are letting us down. We've focused on that this week just with a big emphasis on us. We've got to turn up physically, we've got to turn up mentally. We've done our prep on Worcester and we've prepped ourselves on where we need to get better. The boys are raring to go this weekend, to put on a performance for the fans and for ourselves within that changing room. We need to now start turning our season around."

And that's what Moyle is most looking forward to now. The return of fans. A big difference between the Championship and the Premiership is



as a group and having a few beers and sharing stories and creating memories. It really is a part of the game that we're missing at the moment. It can't happen, we've got to be very sensible. At the club we're very good with COVID restrictions and we're taking it very seriously. It would be lovely to have a beer but it's just something that we can't afford to do at the moment."

With Worcester travelling to Kingsholm this weekend, Moyle is looking forward to helping turn Gloucester Rugby's recent performances around.

"Preparations are good. We are staying very positive because we are

the difference is the number of fans in attendance and that's something Moyle is yet to experience since joining the league.

"That's the thing, it's been amazing to be able to play Premiership rugby. To play against great players and to get to play with great players. One thing I haven't experienced yet is the atmospheres at the games. I've been to Premiership games and you hear that noise from the stands, but I can't wait to actually be on that pitch and listen to the Kingsholm roar. I've heard so many good things about The Shed and I honestly cannot wait until that place is packed and I get to play in front of them."

GLOUCESTER RUGBY PLAYERS OUT ON LOAN

The COVID-19 pandemic has meant that only the top level of rugby has been allowed to be played recently. This has meant that many of Gloucester Rugby's Academy talent haven't played a game of rugby for around 12 months.

With the Championship returning to action in early March, there is an opportunity for a number of players to go out on loan and get game time playing in the second division of English rugby.

Eight Gloucester Rugby Academy players have joined Hartpury on loan with Cameron Jordan also out on loan linking up with Coventry.

Head of Academy, Peter Walton, sees this as a great opportunity for the players.

"We just want them to go and play rugby. There's no substitute for playing. You need to play. That's why it's important with our relationship with Hartpury RFC and BUCS is that our players are able to get some rugby. We'd rather have our players playing than being sat in the gym. They need to be playing rugby.

"Hopefully they get some game time with Hartpury but there is no guarantee as they've got a big squad but they've been training with Hartpury for the last three months. It's a good chance for them to play some Championship rugby if they get the opportunity and give them some rugby."

GLOUCESTER RUGBY PLAYERS OUT ON LOAN

Cameron Jordan – Coventry
Seb Blake – Hartpury
Arthur Clark – Hartpury
Josh Gray – Hartpury
Joe Howard – Hartpury
Harry Taylor – Hartpury
Matty Jones – Hartpury
Isaac Marsh – Hartpury
Tom Stanton – Hartpury



**“ WE’D RATHER
HAVE OUR PLAYERS
PLAYING THAN
BEING SAT IN THE
GYM. THEY NEED
TO BE PLAYING
RUGBY ”**



BATH RUGBY GLOUCESTER RUGBY

16
14



GLOUCESTER RUGBY WERE PIPPED BY TWO POINTS IN A HEART BREAKING 16-14 LOSS TO BATH IN THE WEST COUNTRY DERBY.

Gloucester Rugby made things hard for themselves as Val Rapava-Ruskin was red carded for leading with his elbow 10 minutes into the game.

Despite being a man down, Gloucester Rugby led for much of the first half and were playing the better rugby. Billy Twelvetrees kicked two penalties adding six points to the scoreboard.

Against the grain of play, Bath made a late attacking surge and made a break which resulted in Taulupe Faletau getting over for a try as the clock hit 40 minutes. Rhys Priestland's conversion gave

the hosts a one-point lead at the break.

Things were equally tight in the second half but it was Bath who put points on the board first through a Priestland penalty.

However, Bath were soon down to 14 men as well after Mike Williams was red carded for making a dangerous tackle on Kyle Moyle.

With both sides now evenly matched for players, the game got even tighter with neither side giving an inch.

At the 60 minute mark, Gloucester

Rugby put in a massive defensive effort on their try line to stop a Bath try but before too long Priestland had extended the hosts' lead through a further penalty.

The Cherry and Whites were next to score and hit back through a penalty of their own before Lewis Ludlow got over the try line to put Gloucester Rugby ahead.

With just minutes on the clock it looked like the Cherry and Whites could edge the win but a late penalty for Bath saw Priestland slot a kick from 45m out to take the two point win.



35





WORCESTER
WARRIORS