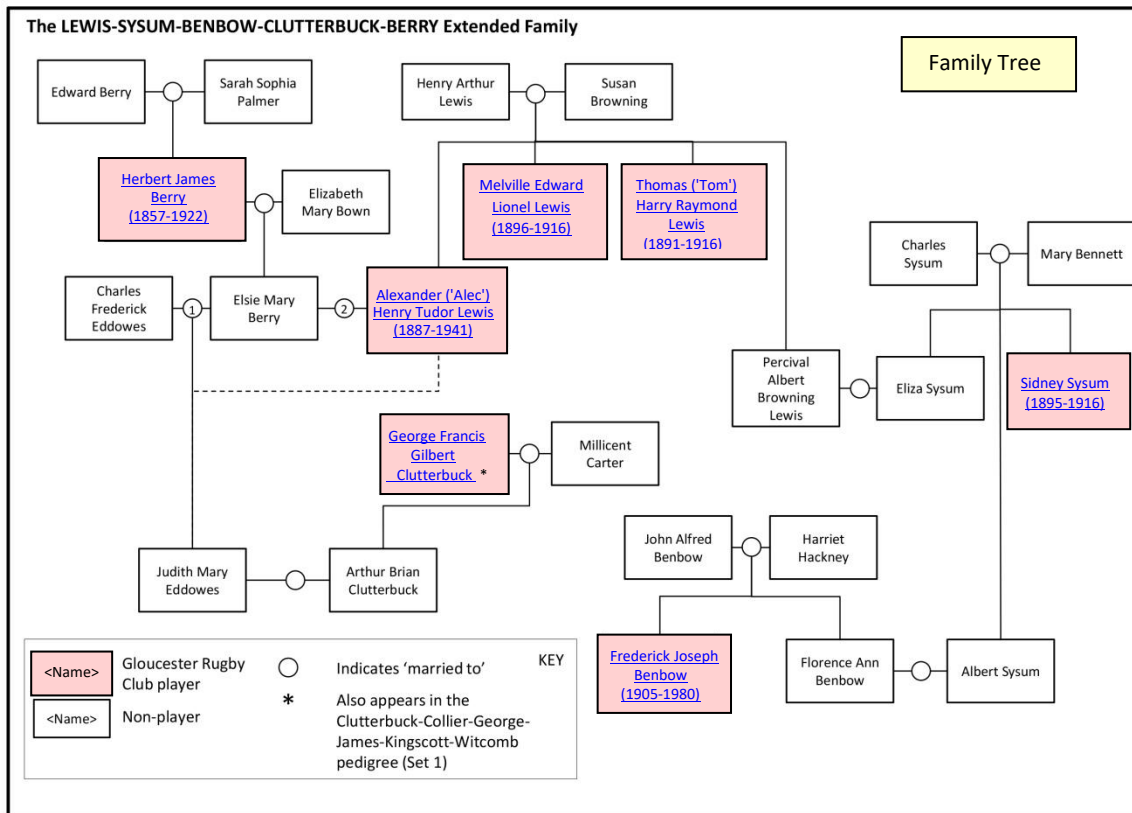


EXTENDED FAMILIES: The LEWIS, SYSUM, BENBOW, CLUTTERBUCK and BERRY Greater Family: The relationships based on marriage between the families of the brothers [Alexander \('Alec'\) Henry Tudor Lewis](#), [Melville Edward Lionel Lewis](#) and [Thomas \('Tom'\) Harry Raymond Lewis](#), [Sidney Sysum](#) and [George Francis Gilbert Clutterbuck](#) and [Frederick Joseph Benbow](#) and [Herbert James Berry](#).



The **LEWIS** Family – brothers [Alexander \('Alec'\) Henry Tudor Lewis](#), [Melville Edward Lionel Lewis](#) and [Thomas \('Tom'\) Harry Raymond Lewis](#)

The brothers were the sons of Arthur Henry Lewis (1855-1910) and Susannah Lewis (née Browning) (1856-1932). The couple married at Cheltenham on 30 August 1877 and lived in Gloucester at Widden Street, Conduit Street and Deansway. Together they had thirteen children.

Alexander ('Alec') Henry Tudor Lewis was born in Gloucester on 7 January 1887 and **together with his two brothers [Melville Edward Lionel Lewis](#) and [Thomas \('Tom'\) Harry Raymond Lewis](#) would play for Gloucester**. Alec's eldest brother Percival Arthur Browning Lewis (1878-1923) in 1906 married Eliza Mary Ann Sysum (1877-1972), the sister of [Sidney Sysum](#). In 1922 at Gloucester Alec married Elsie Mary Berry who had two children from a previous marriage to Charles Eddowes; Elsie Berry was the daughter of [Herbert James Berry](#). In 1931 Alec's step-daughter Judith Mary Eddowes married Albert Brian Clutterbuck, the son of [George Francis Gilbert Clutterbuck](#). Alec was employed as an Assistant Housemaster at Tredworth Council School, but in August 1914 he left his job to join the army. Like the majority of the Gloucester Rugby Club players and former players, including his two brothers [Melville Edward Lionel Lewis](#) and [Thomas Harry Raymond Lewis](#) and [Sidney Sysum](#), he joined the 5th Battalion Gloucestershire Regiment; the three brothers stood in the enlistment

queue together and had consecutive service numbers i.e. Alec 2693, Melville 2694 and Tom 2695. The battalion landed at Boulogne on 29 March 1915 and after a short period of acclimatisation, went into the trenches on 8 April. Between 19 and 23 July 1916 the battalion was part of the attacks on Pozières on the Somme which resulted in the deaths of five Gloucester players – Alec’s brothers [Melville Edward Lionel Lewis](#) and [Thomas Harry Raymond Lewis](#), [Sidney Sysum](#), [Sydney Millard](#) (78 games for the Gloucester First XV between 1909 and 1914) and [James Griffiths](#) (1 game for the Gloucester First XV and 3 games for Gloucester A); a mile away a sixth player [Jack Nelmes](#) (37 games for Gloucester First XV between 1909 and 1910 and won 8 Gloucestershire County caps) was also killed in action. During the attack on Pozières Alec was wounded for the third time along with many of the other rugby players. On recovery from his wounds Alec was granted a commission as a Second Lieutenant in 6th Battalion Berkshire Regiment. During this period with the Berkshires he won the Military Cross for conspicuous gallantry in December 1916. However in a rare event he was awarded a second Military Cross in December 1917 as recognition for several reconnaissance missions into No-Man’s-Land under heavy shell and rifle fire. Alec was eventually promoted to the rank of Major in the Intelligence Corps. After the war he initially returned to Gloucester before moving to Birmingham to work for Dunlop Limited (Rubber). During the Second World War he served with the Birmingham Home Guard and was awarded the War Medal 1939-1945 and the Victory Medal to add to the five medals he was awarded in the Great War. **Alec, as a centre, played 87 games for the Gloucester First XV between 1908 and 1920 (war interrupted), scoring 15 tries. He was also awarded 7 Gloucestershire County caps.** He died on 27 October 1941 at Meridan, Warwickshire aged 54 years and at the request of his employers he was accorded full military honours at his funeral. His wife Elsie died in 1963 aged 77 years. There is a [detailed profile of Alec Lewis](#) in the People/Player Profiles section of this website.

Goto [Top of page](#)

[Family Tree](#)

[Full list of family inter-relationships](#)

Thomas ('Tom') Harry Raymond Lewis was born in Gloucester on 21 July 1890 and **together with his two brothers [Alexander \('Alec'\) Henry Tudor Lewis](#) and [Melville Edward Lionel Lewis](#) would play for Gloucester.** Tom’s eldest brother Percival Arthur Browning Lewis (1878-1923) in 1906 married Eliza Mary Ann Sysum (1877-1972), the sister of [Sidney Sysum](#). Tom never married but trained as a Draughtsman and along with his brother Melville worked for Fielding and Platt Limited at the Atlas Works. In August 1914 along with his brothers [Alexander \('Alec'\) Henry Tudor Lewis](#) and [Melville Edward Lionel Lewis](#) and [Sidney Sysum](#), Tom joined the 5th Battalion Gloucestershire Regiment in August 1914. Tom died along with his brother [Melville](#) and [Sidney Sysum](#) in the attacks on Pozières between 19 and 23 July 1916. By 24 July 1916 the Germans had abandoned the outer trenches at Pozières except for ‘suicide’ machine gun teams which were soon overwhelmed. The 5th Gloucesters Chaplain, the Reverend George Francis Helm, the vicar of All Saints Church, crossed No-Man’s-Land soon after and later confirmed that he had seen the bodies of the Gloucester Rugby players, [Melville Edward Lionel Lewis](#), [Thomas \('Tom'\) Harry Raymond Lewis](#) and [Sydney Millard](#) in the German trench and [Sidney Sysum](#) on the trench parapet. Tom died on the 21 July 1916 on his 26th birthday but after the war his body was never recovered and he is commemorated amongst the Missing of the Somme on the Thiepval Memorial, as is his brother [Melville Edward Lionel Lewis](#) and [Sidney Sysum](#) and [Sydney Millard](#); in total 10 Gloucester Rugby Club players are commemorated on the Thiepval Memorial to the Missing of the Somme 1916. **Tom, a stand-off/scrum-half played mostly**

for the Gloucester Old Boys but like his brother, [Melville Lewis](#), assisted the Gloucester Rugby Club between 1911 and 1914 as cover for injured players.

Goto [Top of page](#)

[Family Tree](#)

[Full list of family inter-relationships](#)

Melville Edward Lionel Lewis was born in Gloucester in 1896 and together with two of his brothers [Alexander \('Alec'\) Henry Tudor Lewis](#) and [Thomas \('Tom'\) Harry Raymond Lewis](#) would play for Gloucester. Melville's eldest brother Percival Arthur Browning Lewis (1878-1923) in 1906 married Eliza Mary Ann Sysum (1877-1972), the sister of [Sidney Sysum](#). Melville never married and immediately prior to the war he worked for Messrs Fielding and Platt Limited at the Atlas Iron Works. Melville together with many other Gloucester Rugby Club players including his brothers [Alexander \('Alec'\) Henry Tudor Lewis](#) and [Thomas \('Tom'\) Harry Raymond Lewis](#) and [Sidney Sysum](#), joined the 5th Battalion Gloucestershire Regiment which landed in France on 29 March 1915. By June 1916 the battalion was stationed on the Somme and after several unsuccessful attempts between 19 and 21 July 1916, took part in the main attack on 23 July 1916 the fortified village of Pozières. During those attacks only four soldiers of the 5th Gloucesters made it across No-Man's-Land to the battalion's objective of the outer German trenches – all four were killed, three of which were the Gloucesters players [Melville Edward Lionel Lewis](#), his brother [Thomas \('Tom'\) Harry Raymond Lewis](#) and [Sydney Millard](#). A fourth player, [Sidney Sysum](#) was killed on the parapet in the act of jumping into the German trench. Melville died on the 23 July 1916 age 20 years but after the war his body, although seen by the Reverend Helm on 24 July, was never recovered and he is commemorated amongst the Missing of the Somme on the Thiepval Memorial, as is his brother [Thomas \('Tom'\) Harry Raymond Lewis](#), [Sidney Sysum](#) and [Sydney Millard](#); in total 10 Gloucester Rugby Club players are commemorated on the Thiepval Memorial amongst the Missing of the Somme 1916. **Melville, a backrow forward played mostly for the Southend club but like his brother, [Tom Lewis](#), assisted the Gloucester Rugby Club between 1913 and 1914 as cover for injured players.**

Goto [Top of page](#)

[Family Tree](#)

[Full list of family inter-relationships](#)

The **SYSUM** Family – [Sidney Sysum](#)

Sidney Sysum was born in Gloucester on 9 June 1895, the fifth son of Charles Henry Sysum (1853-1935) and Mary Sysum (née Bennett) (1855-1936). The couple married in 1873 and had twelve children and lived variously in Gloucester at St Mary' Street and St Mary's Square. One of Sidney's sisters, Eliza, married Percival Lewis, the brother of [Alexander \('Alec'\) Henry Tudor Lewis](#), [Melville Edward Lionel Lewis](#) and [Thomas \('Tom'\) Harry Raymond Lewis](#). Sidney's brother Albert married Florence Ann Benbow who was the sister of [Frederick Joseph Benbow](#). Sidney never married. He initially worked as a Marble Polisher at the Manu-Marble Company Limited but by the outbreak of the Great War was employed by the Gloucester Railway Carriage and Wagon Company Limited. In August 1914 and in the company of many other Gloucester Rugby Club players, Sidney enlisted in the 5th Battalion Gloucestershire Regiment and landed in France on 29 March 1915. By June 1916 the battalion was stationed on the Somme and after several unsuccessful attempts between the 19 and 21 July 1916, took part in the main attack on 23 July 1916 against the fortified village of Pozières.

Attacking the left-hand section of the German trenches Sidney was killed on the parapet whilst attempting to enter the German trench and join his four other comrades, all of whom, were killed and included his sister's brothers-in-law [Melville Edward Lionel Lewis](#) and [Thomas \('Tom'\) Harry Raymond Lewis](#) and his team mate **Sydney Millard**. Sidney's body was identified by the Reverend Helm the following day but despite this his body was never recovered and he is commemorated amongst the Missing of the Somme on the Thiepval Memorial, as are [Thomas \('Tom'\) Harry Raymond Lewis](#) and [Melville Edward Lionel Lewis](#) and **Sydney Millard**; in total 10 Gloucester Rugby Club players are commemorated on the Thiepval Memorial amongst the Missing of the Somme. Sidney, as a centre, played 26 games for the Gloucester First XV in his only season with the Club, 1913-1914, scoring 7 tries; undoubtedly he would have played a great many more games had he survived the war.

Goto [Top of page](#) [Family Tree](#) [Full list of family inter-relationships](#)

The **BENBOW** Family – [Frederick Joseph Benbow](#)

Frederick Joseph Benbow was born in Gloucester on 22 September 1905, the son of John Alfred Benbow (1859-1924) and Harriet Benbow (née Hackney) (1863-1936). The couple married on 21 May 1884 at St Catharine's Church. Together they had nine children. On the 27 December 1909 one of Frederick's sisters, Florence Ann Benbow (1884-1958) married Albert Sysum (1883-1963), the brother of [Sidney Sysum](#). In July 1936 Frederick married Molly Rodway (1913-1983) and the couple lived at Mount Gardens, Gloucester, and then went to Stroud for a period before returning to Gloucester. Frederick, as a half back or centre played 13 games for the Gloucester First XV in the 1928-1929 season, scoring 1 try. Frederick died at Gloucester in June 1980 age 75 years while his wife, Molly, died three years later age 70 years.

Goto [Top of page](#) [Family Tree](#) [Full list of family inter-relationships](#)

The **CLUTTERBUCK** Family – [George Francis Gilbert Clutterbuck](#)

George Francis Gilbert Clutterbuck married Millicent Carter in 1903 and the couple had two children, one of whom died in infancy. The remaining child Albert Brian Clutterbuck in 1931 married Judith Eddowes, the step-daughter of [Alexander \('Alec'\) Henry Tudor Lewis](#).

For a more detailed profile of George Clutterbuck's family relations please refer to the [Family Relationships Set 1](#) which is in the People/Families in Gloucester Rugby/Gloucesters Players' Family Inter-relationships section of this website. There is also a [detailed profile of George Clutterbuck](#) in the People/Player Profiles section of this website.

Goto [Top of page](#) [Family Tree](#) [Full list of family inter-relationships](#)

The **BERRY** Family – [Herbert James Berry](#)

Herbert James Berry was born in 1857 at Brighton, the son of Edward Berry (1817-1891), a Chemist, and Sarah Sophia Berry (née Palmer) (1862-1891). The couple married in August 1848 at Reigate in Surrey but lived in Brighton. In about 1861 the family moved to Gloucester and his father opened a Chemist's shop at The Cross. The family lived variously in Westgate Street, Montpellier Place and Brunswick Square. The couple had ten children and all but one survived into adulthood. On 23 June 1884 Herbert, now an Accountant married Mary Elizabeth Bown at St Cuthbert's Church at Wells in Somerset. The couple had three children. His eldest daughter, Elsie Mary Berry married Charles Frederick Beaumont Eddowes in 1908 and the couple had two children. However after a period of time the marriage was dissolved and in 1922 Elsie married [Alexander \('Alec'\) Henry Tudor Lewis](#). In 1931 Alec's step-daughter and Herbert's granddaughter, Judith Eddowes married Albert Brian Clutterbuck, the son of [George Francis Gilbert Clutterbuck](#). Although working in an office, Herbert soon followed in the footsteps of his father-in-law who was a Hotel Proprietor and Herbert and Mary became the tenants of the White Hart Inn in Moreton-in-Marsh before moving back to Gloucester to run the New Inn Hotel which Herbert purchased outright in 1889. **Herbert, a half-back and three-quarter, played 91 games for Gloucester First XV between 1874 and 1884, scoring 5 tries and 5 games for the Gloucester Second XV between 1881 and 1884. He also won 10 Gloucestershire County caps between 1878 and 1884. His rugby career was however curtailed by a serious knee injury which resulted in him being unable to participate in any strenuous outdoor pursuit for the rest of his life.** Herbert who had been in failing health for two or three years died of a heart attack in Gloucester on 17 August 1922 aged 65 years while his wife, Mary, died in 1936 aged 74 years.

Goto [Top of page](#)

[Family Tree](#)

[Full list of family inter-relationships](#)

-----//-----