

OFFICIAL MATCHDAY PROGRAMME
ISSUE
09



GLOUCESTER RUGBY

PRICE. £3

vs HARLEQUINS
AVIVA PREMIERSHIP RUGBY - ROUND 12



**MITSUBISHI
MOTORS**

MAIN CLUB PARTNER

**BEN
MORGAN**

**EXCLUSIVE PROGRAMME
INTERVIEW ON PAGE 40**

**PLUS...
RUGBY NEWS
BACK TO SCHOOL
IAN RANDALL**

13.02.16

KICK-OFF 3.00PM

KINGSHOLM

AVIVA PREMIERSHIP RUGBY



OFFICIAL SOCIAL
MEDIA PARTNER

www.gloucesterrugby.co.uk [f gloucesterrugby](https://www.facebook.com/gloucesterrugby) [@gloucesterrugby](https://twitter.com/gloucesterrugby)





C CAPTAIN'S CORNER BILLY TWELVETREES

GOOD AFTERNOON, AND WELCOME TO KINGSHOLM FOR TODAY'S GAME WITH HARLEQUINS.

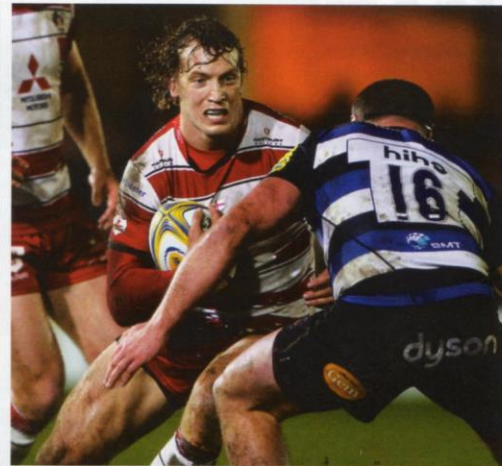
THE big games keep coming thick and fast for the squad, and we have to ensure we build on last Friday's important win.

To get to where we want to be in the Aviva Premiership, picking up wins at our rivals is massively important, and to go to The Rec and earn a hard-fought victory was a massive boost for us.

We suffered a few bumps in the week leading up to the game, but the application of the squad was top notch, and David was correct when he revealed that there was a real buzz in training.

We went down to The Rec,

(RIGHT) After weathering the storm we imposed ourselves on Bath last weekend



TO GET TO WHERE WE WANT TO BE IN THE AVIVA PREMIERSHIP. PICKING UP WINS AT OUR RIVALS IS MASSIVELY IMPORTANT. AND TO GO TO THE REC AND EARN A HARD FOUGHT VICTORY WAS A MASSIVE BOOST FOR US.

against a team also desperate to get a win, and we weathered a storm before imposing ourselves in difficult conditions, playing the game in the right areas of the field and taking our chances when they came around.

Of course, Bath were missing a good chunk of their backs, as were we. But they were still able to name a really strong squad, and a full strength pack so the boys are taking a lot of confidence from the game.

One important factor for us is that we were able to get into the lead and see the game out, something we were left to regret the week before at home to Leicester Tigers.

We played arguably our best half

of rugby in the first half that day, but the final result left a sour taste. We back ourselves to see these games out, and we have to learn from that one.

When we look at the season so far, we've lost to the top teams and have definitely matched them for long periods of each game, and the challenge for the second half of the campaign is to have no more regrets when we look back, and no more games where we rue what might have been.

We were delighted that Quins invited us to be their Big Game 8 opponent back at the turn of the year, and this was another game that we could, and probably should, have won. But that highlights the competitiveness of

what we are up against, week in, week out.

The occasion was special, and the lads lifted their game at Twickenham and probably, at the end of a great spectacle, a draw was a fair result.

We therefore know the challenge ahead of us today, we're back at home, and we have a chance to put right our last outing here and we're excited to do so.

If the weather promises to cause havoc again, then we will react and we are confident in our game now, whatever the conditions!

Enjoy the game!

Billy



Speaking after the victory over Bath last weekend, James Hook says the players owed it to the supporters to get the win.

COMING UP...

EXCLUSIVE MATCHDAY PROGRAMME INTERVIEW
BEN MORGAN

PAGE
40



DAVID HUMPHREYS

DIRECTOR OF RUGBY

GOOD AFTERNOON AND WELCOME TO KINGSHOLM FOR OUR NEXT AVIVA PREMIERSHIP FIXTURE AGAINST HARLEQUINS.

WHAT a difference a week can make in rugby! Saturday afternoon we're all leaving Kingsholm thoroughly disappointed and dispirited with a last minute home loss to Leicester.

Six days later, we're all leaving the Rec delighted with a hard fought, but well deserved win over our local rivals in really difficult weather conditions.

The players deserve huge credit for the manner in which they responded to the Leicester defeat, and we all hope that last week's victory will be the catalyst for a successful second half to the season.

In contrast to the Leicester game where we played some of our best rugby of the season, the Bath victory was built upon a solid set piece and an accurate kicking game that allowed us to put Bath under real pressure in the second half.

The defensive commitment and will to win was evident for everyone to see, and we will need to bring the same level of intensity to the game today to counter Harlequins' attacking threat.

Big Game 8 at Twickenham against Harlequins was one of the most exciting games of the season and, while we were disappointed not to close out the win having lead by 10 points, we were relieved not to lose to Nick Evans' last minute attempted drop goal.

Those are the small margins between success and failure against the top teams in the Premiership and we'll need another big performance today to build upon last weekend's victory.

The current standings in the Premiership table again highlight how competitive this year's

competition has been. A couple of wins can move you up the table in the same way that a couple of losses can see you slide four or five places very quickly. And, although it's too early to worry about our League position, we're all very aware that every league point matters.

This 10 game block of Premiership fixtures will test every team's squad depth like never before. Six Nations call-ups and injuries will have an added impact on these games, but we're hoping to see some of our injured players returning over the next couple of weeks.

Injuries to Cook, Purdy, Halaifonua, Trinder, Marshall and May have left us with limited numbers in our outside backs but, with the exception of Jonny May, you can look forward to seeing them all back in Cherry and White sooner rather than later.

I'm delighted to welcome Conor O'Shea, his Harlequins team and all their supporters to Kingsholm this afternoon and I'm sure you'll all enjoy giving Conor a reminder of what he will miss as he leaves Quins at the end of the season. He has done an outstanding job at Harlequins and we wish him every success wherever he goes next.

Thanks to all of you who made the journey to the Rec week and I know from talking to some of you that you enjoyed even more than we did!

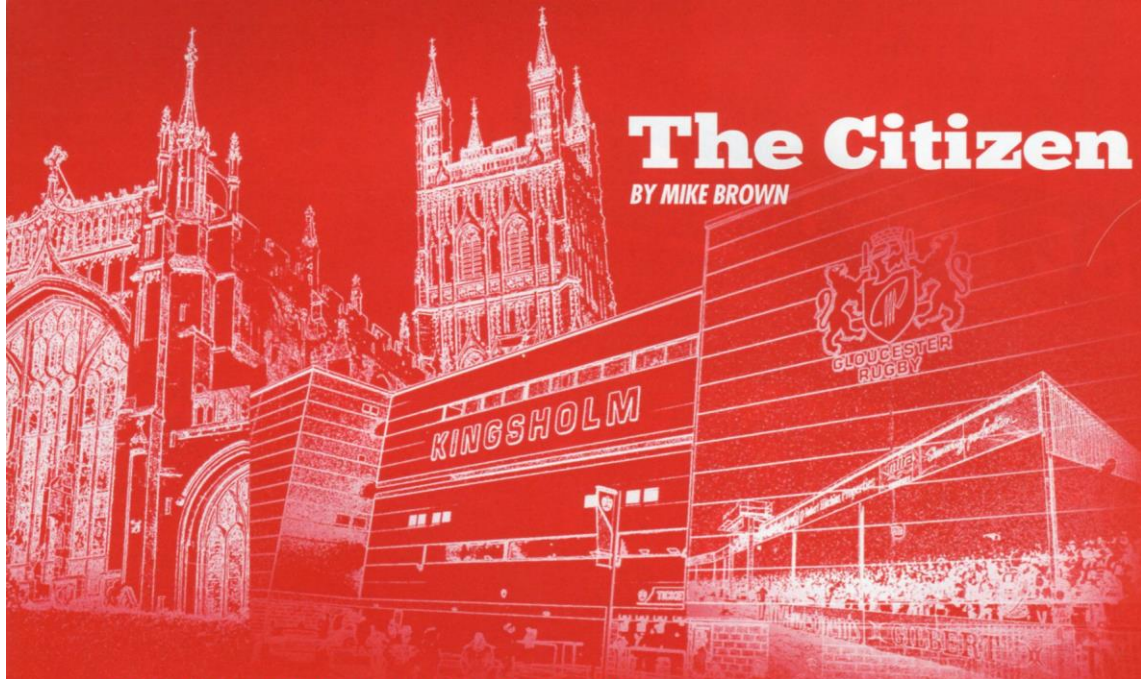
However, nothing beats Kingsholm in full voice and we're delighted to be back at home this afternoon for another vitally important game.

Enjoy the game and thanks for all your support.

David



(LEFT) The players fought hard for the victory against Bath last weekend, spurred on by our travelling support



The Citizen

BY MIKE BROWN

DERBY VICTORY OUTCOMES

FIVE THINGS WE LEARNT FROM GLOUCESTER'S WEST COUNTRY DERBY VICTORY OVER BATH



HEINZ IS THE REAL DEAL

IT has taken the Gloucester faithful some time to warm to Willi Heinz – at the start of the season he was sprightly but he then stagnated and admitted he was growing frustrated with his form.

But in the last weeks he has been

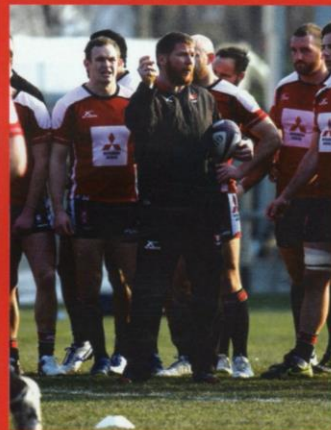
superb and was imperious at the Rec. The Kiwi scrum-half controlled affairs magnificently, with his low box-kicks to the corners ensuring the pressure was never off Bath.

He was a growing threat around the fringes, making 30 metres from one break and brings an added dimension of physicality which

Greig Laidlaw lacks.

He is also a leader and could be seen barking orders at his troops. In Laidlaw, Heinz and Callum Braley, Gloucester are blessed in the scrum-half department.

David Humphreys: "When we signed him I thought he would be an outstanding addition to our squad and he showed his ability to play in any conditions, he managed the game really well and it's not just his ability to play but his leadership, he's calm and composed and that rubs off on everyone around him."



DEFENCE TAKES TIME BUT IS TIGHTENING UP

EARLIER in the week I was a little confused by Gloucester's defence. It is undoubtedly improved, their attitude, physicality and line-speed is ferocious but they are still leaking tries – only the bottom three have conceded more.

But the performance at Bath warmed the cockles. They were under the pump for the first 20 and conceded some dubious penalties which ensured Bath remained camped in their 22.

To only concede one try from the driving lineout was a great achievement especially when you consider they were without their talisman Jeremy Thrush – due to a longstanding commitment agreed before he signed his contract.

They tackled like men possessed and other than their lumbering driving lineout, Bath rarely threatened elsewhere.

Humphreys: "Jonny Bell has come in with the aim of turning us into the best defensive team in the competition. It doesn't happen overnight and there have been frustrations with system errors but we have the energy, work-rate and physical commitment which is very hard to play against. As time goes by we will get better and better."

KVESIC PROVES HIS WORTH YET AGAIN

IN many ways it beggars belief that Matt Kvesic is not lining up for England tomorrow, he epitomises everything Eddie Jones claims he likes in an openside flanker.

But he was released back to Gloucester, returning late in the week and lined up on the bench.

His first action when introduced was to concede a penalty as his left knee hit the deck and he continued to jackal but thereafter he was superb.

Kvesic forced a penalty and claimed two turnovers that sapped the life out of Bath, the latter at the death which ensured victory.

He was also carrying with more



venom, industrious in defence and far more visibly vocal. And while Kvesic receives the plaudits, you have to give due credit to Jacob Rowan who was also superb in the number seven shirt.

GLOUCESTER ARE LEARNING LESSONS

SO many times this season Gloucester have managed to surrender a lead in the closing minutes – they are haunted by defeats to Saracens and Leicester Tigers and that high-scoring draw with Harlequins.

They have failed to cope with testing conditions against both the Tigers and Exeter Chiefs, but against Bath they weathered an early storm and then controlled affairs.

Heinz and James Hook took the game by the scruff of the neck and on the whole kicked very well. There were few loose and aimless punts down field and when necessary they held onto the ball.

And while there were some nervous moments they demonstrated they have taken on

board their painful experiences and closed the game out.

Humphreys: "We lost to Saracens who are top of the league with three minutes to go, we lost to Leicester, who are third, in the last minute, Harlequins, who are above us as well, we had a ten point lead. We have been very close to all these good teams and it's about building that knowledge of how you win tight games and gaining belief as a squad of how good we are."

MONEY ISN'T EVERYTHING

FOR many Bath against Gloucester is a case of the haves versus the have nots, the super-rich and the sustainable.

But Gloucester proved with some grit and determination, some old fashioned 'dawg' you can beat those chequebook charlies. Bruce Craig's face at full-time really was a picture.

Citizen
AVAILABLE DAILY



GLOUCESTER SECOND ROW FORWARDS **PART 1**

IN THE EARLY DAYS OF RUGBY THERE WERE NO SPECIALISTS IN THE FORWARDS. WHEN A SCRUM FORMED, THE FIRST TO ARRIVE MADE UP THE FRONT ROW AND SO ON. IT WAS MANY YEARS BEFORE PLAYERS WOULD BECOME ASSOCIATED WITH PARTICULAR POSITIONS.

GEORGE "BIDDY" HALFORD
GEORGE Halford was an early example of a true second row forward. He was born in 1886 and played his first game for Gloucester in December 1907 against Exeter. He was an immediate success and was a regular in the first team until 1923, playing 326 games, and scoring 32 tries.



George made his first appearance for Gloucestershire, for whom he was destined to play 35 times, in a baptism of fire against Cornwall at Redruth in February 1910, scoring a try. He retained his place in the team which went on to win the County Championship for the first time, beating Yorkshire 23-0 at Kingsholm. George captained Gloucester in the 1913-14 season when 25 of the 37 games were won. That season saw a famous win at

Twickenham against Harlequins who at the time were reckoned to be one of, if not the best, club side in the land. He would have been captain again in 1914-15 if WW1 had not intervened. He was mobilised, but wounded in France in February 1916 and discharged from the army. However, he was back at Kingsholm for the 1919-20 season, and resumed the captaincy.

He was then part of an outstanding county team which won a hat-trick of titles from 1920 to 1922, and captained them in the 1921-22 season, when they won the final 19-0 against North Midlands at Villa Park. In addition he won two England caps in 1920 against Wales and France.

JOHN A'BEAR
John was born on 16 July 1913 and played his first rugby at the Crypt Grammar School, Gloucester. He was a player with a fair turn of pace for a forward, who made the first of his 211 appearances in a famous win at Swansea in November 1933. It was Gloucester's first ever win at St.Helen's.

His partner in the second row in this game was "Digger" Morris. Their partnership became legendary, and they were firm friends off the field. John was Digger's best man at his wedding in 1936. They were famous



for their rendition of "The Pig Song", a part of which can be heard on our Heritage website. John became the club's youngest captain in 1937, at the age of 24, and remained in that role until war intervened in 1939. He also played 14 times for the county and was a member of the championship winning team of 1937 which defeated East Midlands 5-0 in the final at Bristol. International recognition eluded him, although he did tour Argentina in 1936 with a "British Team", and was reserve for an English trial game in the same year.

ROY "DIGGER" MORRIS
John A'Bear's second row partner "Digger" Morris was educated at Hatherley Road School, Gloucester, and played his early rugby for Gloucester Old Boys, before making his first appearance for Gloucester on 19 December 1931 against Northampton. He only



played one more game that season, but broke through to a regular place in the following campaign.

That 1932-33 season was memorable in that the double over Newport was achieved for the first time in 50 years. Digger was present for both games.

Like John A'Bear, international honours were not to be for Digger, although he captained the Possibles to a win over the Probables in the England trial game of 1938. Had he played for Harlequins, who knows.....

After the war in 1946-47 Digger captained both Gloucester and the county. Gloucestershire drew with Lancashire in the Championship final, but lost the replay at Kingsholm. In all he played 317 times for Gloucester and 19 for the county.

Digger was a man of many parts, and it is not widely known that at times he was a professional boxer, trainer of greyhounds and bookmaker. Digger was a real character who, long after his playing days were over, acted as a mentor to the young Mike Burton, a debt Mike appreciates to this day.

Digger was once asked what his most enjoyable game had been. He replied, "I think it was when that Kiwi outfit came to Kingsholm just after the war." "That Kiwi outfit" was the New Zealand Services team, which was in all but name a full All Blacks side.

Digger continued, "I got kicked in the yud in the first half and don't remember much about it. After the break, I dropped one of their blokes on his yud and I 'ad four of 'em onto me after that. It was a bloody smashing game."

JOHN GWILLIAM

John was a Welshman, born in Pontypridd in 1923. He

won 23 caps for Wales from 1947 to 1954, and captained his country in 13 of them. He was in the Wales team which famously defeated the All Blacks 13-8 in 1953. He played the majority of his internationals as a number 8 but was invariably in the second row for Gloucester.



As a young man in WW2 John was an officer in the Royal Tank Regiment, and was involved in fighting in Europe. He appeared for Newport in the early post war seasons, and won Blues at Cambridge in 1947 and 1948.

He became a teacher and played for Edinburgh Wanderers from 1949 to 1952. He then moved to another school in Bromsgrove and joined Gloucester for the start of the 1952-53 season.

John won five of his caps whilst at Kingsholm and was the first Gloucester player to captain his country.

John played two seasons at Kingsholm from 1952 to 1954 and made 49 appearances. The 1953-54 season was at the time the best in the club's history, winning 31 out of 42 games played, and John was vice-captain to John Taylor.

ROY LONG

Another product of Crypt Grammar School, Roy was an expert line out jumper

who served Gloucester well for 13 years, making 339 appearances for the club. He was another in the long line of Gloucester players who learnt their rugby with Gloucester Old Boys.



He made his first fifteen debut at Easter 1956 against the touring Bradford team. Soon he was called up to do his National Service and played for the RAF in two successful Inter-Services Championships. Cpl. R.G.Long played alongside S.A.C Don Rutherford in the 1958 campaign.

On his return to club rugby he forged successful second row partnerships with "Baggy" Hudson and a young Alan Brinn, the latter combination becoming permanent for most of the sixties.

Roy played ten times for the county, and perhaps his slight lack of pace told against him at that level, although his line out ability was never questioned.

Roy had intended to retire at the end of the 1966-67 season, but an injury crisis halfway through the 1968-69 season saw him being hauled back out of retirement to play another 25 games, before finally hanging up his boots after the traditional end of season tour.

Roy went on to be Club Secretary, and held that post in the Centenary season of 1973-74. Following a long illness he died in February 1992.



**BEN
MORGAN**



FATHER FIGURE

2015 WAS A TOPSY-TURVY YEAR FOR BEN MORGAN. JANUARY SAW INJURY STRIKE, BUT A HUGELY SPIRITED AND DETERMINED RECOVERY BEHIND THE SCENES SAW THE DURSLEY MAN RETURN IN TIME FOR RUGBY WORLD CUP 2015.

HOWEVER, back on domestic duty now, the number eight is fully focused on the job at hand in Cherry and White in 2016 and beyond.

As a Gloucestershire man, Morgan knows the significance of a win over Bath, hence why last Friday's triumph at The Rec was extra special, and he reveals the mood in the camp is buoyant.

"There is a buzz, it was a massive game for us. Losing out in the dying minutes to Leicester the week before was really frustrating, but to then go and put in a really solid performance against Bath - a team we hadn't beaten in four years was pretty spot on really.

"It really sets us up now for Harlequins at home."

A few times this campaign, the Cherry and Whites have been guilty of sitting down dejected after a game they should've won, and Morgan highlights the importance in being able to toast a victory.

"It was a big relief, it's one of those things that, as a team, we've been close to almost putting in a full performance, and if we look at that Bath game, we almost let them back in again with a couple of penalties to give them a chance.

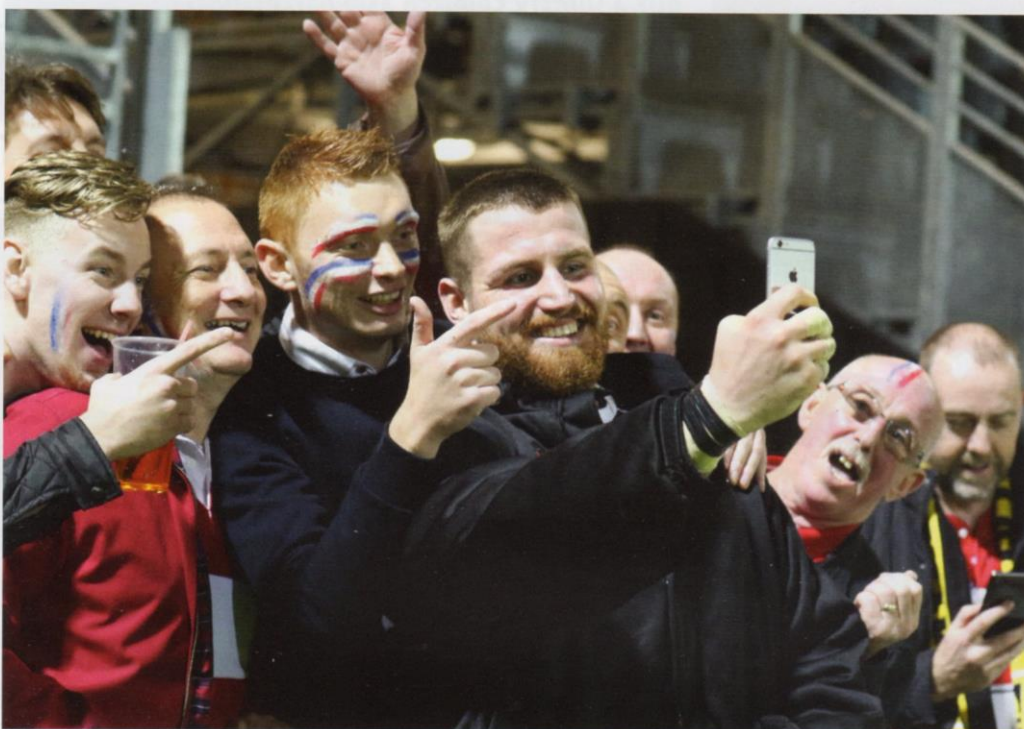
"Closing the game out was really good but I think if we're critical of ourselves, we don't want to give teams an opportunity at the end. We want to get the game won well before that, and that is something we will work on this week and Harlequins is a different

IT'S OUR HOME. AND WE LOOK FORWARD TO LAYING THE CHALLENGE DOWN TO ANYONE THAT COMES TO TAKE US ON AT KINGSHOLM. WE DON'T WANT IT TO BE EASY AND WE WANT EVERYONE TO KNOW THAT THEY'VE BEEN IN A GAME. ▼▼

challenge.”

Early on last Friday at The Rec, Bath set the stall out early to try to dominate up front with several penalties directed to the corner rather than the uprights, and although one try was conceded, Morgan was thrilled with passing the overall examination.

“It was pretty much a unit session for us, in that first fifteen to twenty minutes. It’s why we practice and when teams do come at us like that, we are able to weather it and it was really pleasing to see that they had opted to take points rather than go for another



scrum, even when we were down to seven men in the pack.

“It’s things we practice in the week, coming into the games, and it is great to see the results from this.”

As the first half of the Aviva Premiership season closes, the number eight is happy with the progress although if the Cherry and Whites are to work their way through a congested middle of the table, they have to turn competing with the top teams, into a winning edge.

“We absolutely can compete

with these top teams, and there have been a few games this season that we have let slip a little bit. I think the game at Twickenham was one of them.

“We’ve got the ability to go and win games and the firepower to go and score. It is just a case of being able to close games out and I think that is lessons we are learning along the way as this team develops.”

With the inclement weather of Storm Imogen battering the county in the last week, the

squad have been utilising the indoor facilities at Virgin Active gym in Brockworth, and Morgan acknowledges the benefit of being able to freshen up the weekly routine.

“It is a nice addition, it’s nice to change things around, and things can get a bit samey sometimes. It keeps you fresh and keeps your mind working and lightens the load a bit for us.

“With the pool it allows us to combine some recovery as well. After such a big derby game, the



want it to be easy and we want everyone to know that they've been in a game."

And Morgan has also been adapting to life as a new father,



ALL HE KNOWS IS THAT GLOUCESTER BEAT BATH WHEN THE TWO SIDES MEET. HE HAD HIS CHERRY AND WHITE SHIRT ON AND WAS CHEERING IN HIS OWN WAY!

bodies are sore and we've got to rebound quickly as we do have another big game coming up."

And with the weather set to play a big part in the game this weekend, Morgan is confident that the squad are developing a game for all conditions.

"We will absolutely back ourselves. We've put in some big performances in poor weather, and I think the pitch unfortunately isn't the fastest but we are well adapted to playing there.

"It's our home, and we look forward to laying the challenge down to anyone that comes to take us on at Kingsholm. We don't



and for Finn Morgan, life is great when all he knows is that the West Country is Cherry and White!

"All good to be fair, just getting into routines and to be honest, I'm not having to do a lot, my wife is superb and taking care of a lot of it! I try and help out when I can when I get home after training and give her a rest. She's got it all covered!

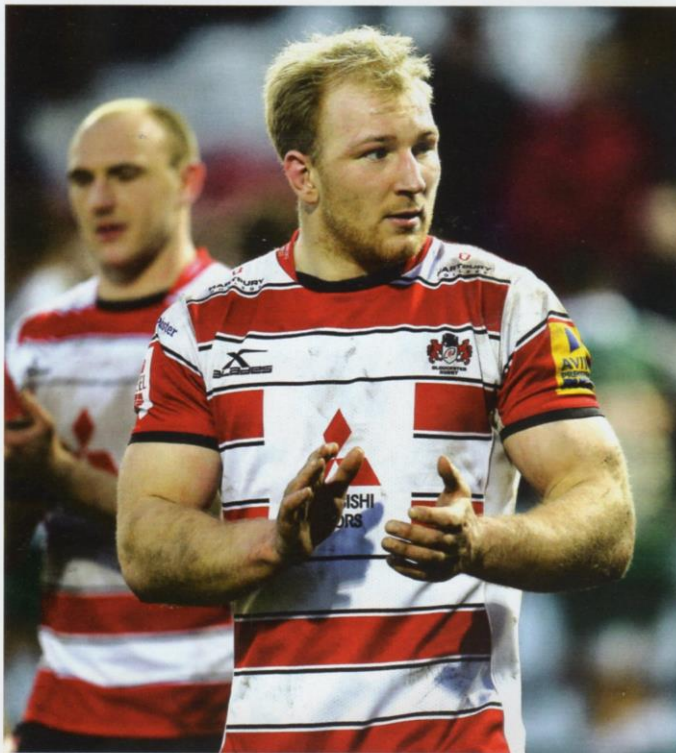
"All he knows is that Gloucester beat Bath when the two sides meet. He had his Cherry and White shirt on and was cheering in his own way!"

KINGSHOLM NEWS WITH BOB

FENTON



A COUPLE OF WEEKS AGO, WHILE WRITING THIS COLUMN I OFFERED BELATED CONGRATULATIONS TO MATT KVESIC ON HIS CALL UP TO THE ENGLAND SQUAD. ABOUT 24 HOURS AFTER SENDING IT AWAY HE WAS SENT AWAY HIMSELF, BACK TO ENGLAND AND OUT OF THE SQUAD FOR THE SCOTLAND GAME.



IN the brave new world of Eddie Jones ((c) all newspapers) the England selectors decided to pick pretty much the same group of players that figured last year, so no room for Matt or any of the up and coming bright new things.

I'd never profess to be a selector of any merit, but looking at the selection I was reminded of a quote by Henry Ford, 'If you always do what you always did, you'll always get what you always got.'

Well surprise, surprise - if you always pick etc etc.... you'll always get the same result - a less than dynamic performance.

Well England's loss is Gloucester's game, though you have to feel for Matt - and the likes of Elliot Daly et al - who must wonder what it is that they have to do to impress the selectors?

Matt has more turnovers than you'll find in a cake shop to his name, but it's still not enough. I'll join the rest of the country in

slowly shaking my head in disbelief at his exclusion.

But, enough of the international drudgery. For me the club game is far more important than the corporate hospitality event that is the Six Nations, so let's talk about that.

Topsy-turvy doesn't begin to come close to the past few weeks, does it? The result against Leicester didn't go our way, then the following Friday we only go and win at the Rec!

That Leicester game first. Those of us who have been around for long enough get a bit of a feeling about games like that. Sadly, it's almost inevitable that they creep back into the game and end up stealing the points. I was trying to explain this to some people who were celebrating things way too early. As the saying goes, it ain't over until it's over.

Yes, the try they scored breaking from inside their own 22 was a thing of beauty, slick hands and great ball control. Sadly though we made it a bit easy for them. A two on one out of defence with a 15m channel to run into was only going to end one way unfortunately.

Talking of running, what was it with those Leicester water carriers? They were on and off the pitch every 30 seconds or so! As my comrade Tommo tweeted during the game, the man with the bottles would have had the highest number of metres covered on the OPTA stats for the game by miles.

I know keeping hydrated is hugely important and all of that,



MATT HAS MORE TURNOVERS THAN YOU'LL FIND IN A CAKE SHOP TO HIS NAME, BUT IT'S STILL NOT ENOUGH. I'LL JOIN THE REST OF THE COUNTRY IN SLOWLY SHAKING MY HEAD IN DISBELIEF AT HIS EXCLUSION.

but I can only imagine what the queue for the gents was like after the match. And I bet their bus had to stop at every services all the way back to Leicester!

Really, though, the referees need to get a grip on that kind of behaviour. It was a blatant plan to slow the game down and if you're looking for evidence of that, look at the last 10 minutes of that game. They could have been playing in the Sahara Desert and those water boys wouldn't have shown up. There's a fine line between gamesmanship and cheating... Hard to believe that a Leicester team might want to bend the rules a little though, most unlike them...

It was a tough one to take,



though. A packed Kingsholm in fine voice, a Leicester team shorn of many players... it wasn't to be. And a few days later we're heading down the road to Bath, one of THE fixtures of the season.

In horrible conditions the first 20 minutes would have had pretty much every Gloucester fan hiding behind a virtual sofa, as the wind and rain made it all one way traffic. When Bath scored after a few minutes it looked like it was going

to be a very long night. It didn't quite work out that way though.

To draw from another quote, but this time from the film 'Any Given Sunday', this team fought for those vital inches to get themselves back into the game.

The second half was a perfect example of how to play the conditions, outstanding kicking from James Hook, Willi Heinz showing everything that we thought he might be and a pack scrapping for every blade of grass.

For a neutral watching, it probably wasn't pretty to watch at times. But, for anyone in Cherry and White, it was a thing of beauty. We could delve even deeper into the world of film and talk about 'True Grit' but that would be starting to stretch the film analogies a bit too far.

Having won the game we were catapulted up the table to the heady heights of fifth place in the Premiership table. 24 hours later we were back down in eighth as every possible combination of results went against us - such is the nature of the table this year. Less than 10 points separate third and eight places at the moment, a couple of results can change everything in a blink - as we found out last weekend!

Today then... Harlequins. I don't think we should expect another 39 - 39 draw as we saw on the wide open spaces of Twickenham. If the rain doesn't ease up soon the pitch at Kingsholm will be err... difficult, so I wouldn't hold your breath for a feast of running rugby,

You never know though. But if it ends up like the game at the Rec last week, and as long as the result ends in our favour as it did then, I'll be happy enough!



Back To School

by Gareth Evans, age 25

PRIMARY SCHOOL



I WENT TO Longleaze Primary, Wootton Bassett

MY BEST FRIEND WAS James Dent

MY FAVOURITE TEACHER WAS Mr Brierley

MY FAVOURITE SCHOOL DINNER WAS Pizza, until it was banned

IN MY SNACK BOX I HAD a box of raisins

MY PRIMARY SCHOOL LOVE WAS Playing football...

Gareth's best friends

1. James
2. Duncan
3. Tom
4. David



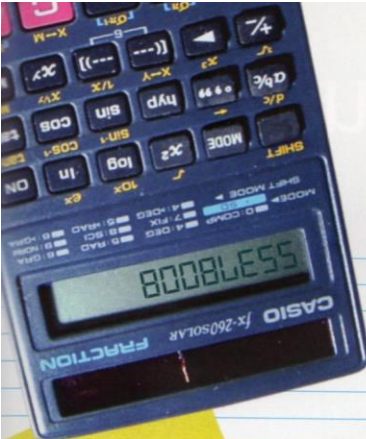
MY FIRST SCHOOL PLAY WAS Joseph and his Technicolour Dreamcoat

IN THE PLAYGROUND, I was playing football

MY EARLIEST RUGBY MEMORY Playing minis at Wootton Bassett RFC at Ballards Ash, the windiest place on earth


WHEN WE PLAYED RUGBY I PRETENDED TO BE Jonah Lomu

AT SPORTS DAY, I won everything!



Gareth's timetable
Football
Lunch
Rugby

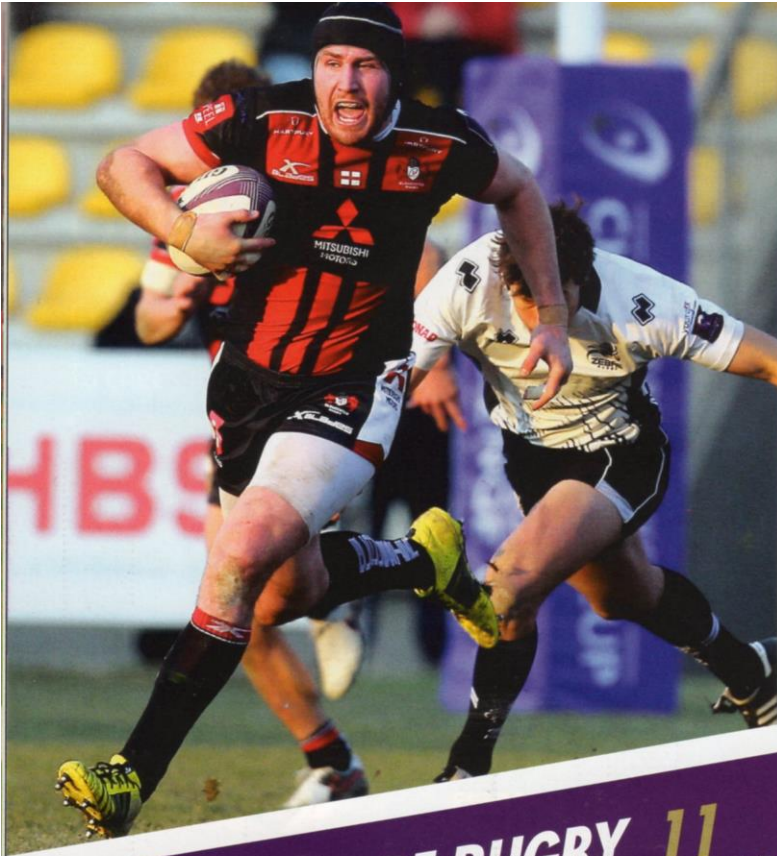
SECONDARY SCHOOL

- I WENT TO** Wootton Bassett Comprehensive
- MY FAVOURITE MEMORY** is sports day 
- I ENJOYED** PE Lessons
- MY GRADES WERE** Not as good as they should have been
- MY HARDEST SUBJECT WAS** French
- MY UNIFORM WAS** Shirt and tie
- IN PE, I USED TO** get way too competitive

Dear Mr and Mrs Evans
 We regret to inform you that Gareth has been
 caught smuggling pizza into the school



- GOT IN TROUBLE FOR** being late after lunchtime
- MY FAVOURITE SCHOOL TRIP WAS** Water sports trip to South of France
- AT SCHOOL I WANTED TO BE** a rugby player
- ON WORK EXPERIENCE I WENT TO** The BBC in London!



just enough on the day, although it took a late Billy Burns penalty to secure the win after Zebre had threatened to spoil Gloucester's 100% record with a late try.

Zebre had shown enough in the first meeting between the two teams earlier this year to suggest that they would be a handful on their own turf. And so it proved to be...

The travelling support outnumbered the home fans, but it was the Zebre followers who were given something to shout about early on as two Padovani penalties opened up a 6-0 lead in the first five minutes.

Gloucester took a while to settle and weren't helped by an error count which prevented them from gaining any real momentum to



ZEBRE RUGBY 11 GLOUCESTER RUGBY 14

HALF TIME 6-3
ATTENDANCE 2,413
REFEREE Gary Conway (Ireland)

It wasn't pretty as Trevor Woodman told the media immediately after the game, but a 14-11 victory over Zebre in Parma was enough to clinch the group for Gloucester and a home quarter-final against the Dragons.

It was a much-changed side from the team that had started against La Rochelle the week before, as the Cherry and Whites continued to rotate their squad to give game time to as many of the squad as possible without overworking anyone.

And the 23 on duty in Italy did

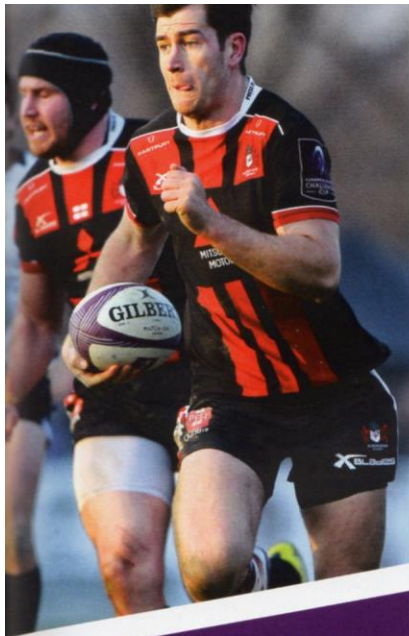


Speaking to GRTV **Bill Meakes** made a point of thanking the tremendous travelling support.

their game. And they didn't get on the scoreboard until almost the half hour mark when Burns kicked a penalty.

In hindsight, having not really got going at all, Gloucester wouldn't have been too upset to go into half time only trailing by just the three points.

Slowly but surely though, as the second half progressed, Gloucester started to assume control although the error count continued and several good scoring chances were wasted.



METRES RUN WITH THE BALL
ZEBRE 255M
GLOUCESTER 310M

IT WAS GOOD THAT WE SHOWED CHARACTER AT THE END TO BE ABLE TO GET BACK IN THE GAME. GET OURSELVES IN FRONT AND FINISH IT OFF. WAS IT PRETTY? NOT REALLY. BUT IT DOESN'T NEED TO BE ALL THE TIME.

TREVOR WOODMAN

However, a rampaging break from Ben Morgan took play deep into Zebre territory on 51 minutes and, as Gloucester remained patient and worked the phases, Mark Atkinson crossed for the game's first try.

Burns added another penalty for an 11-6 lead and, with Zebre barely threatening, Gloucester looked comfortable going into the final ten minutes.

However, a momentary lapse of concentration, a missed tackle and Leobardo Sarto fielded a high kick, set off down the left flank and put Dries van Schalkwyk in for a score-

MATCHDAY SQUADS



ZEBRE RUGBY

- 15 Kayle Van Zyl
- 14 Dion Berryman
- 13 Tommaso Boni
- 12 Matteo Praticchetti
- 11 Leonardo Sarto
- 10 Edoardo Padovani 2P
- 9 Guglielmo Palazzani
- 1 Andrea de Marchi
- 2 Oliviero Fabiani
- 3 Pietro Ceccarelli
- 4 Valerio Bernabo
- 5 Marco Bortolami (C)
- 6 Jacopo Sarto
- 7 Jean Cook
- 8 Dries van Schalkwyk 1T

- 16 Victor Marchetti
- 17 Bruno Postiglioni
- 18 Guillermo Roan
- 19 Gideon Koegelenberg
- 20 Federico Ruzza ■
- 21 Luke Burgess
- 22 Ulrich Beyers
- 23 Kelly Haimona



GLOUCESTER RUGBY

- 15 Rob Cook
- 14 David Halaifonua
- 13 Bill Meakes
- 12 Mark Atkinson 1T
- 11 Stevie McColl
- 10 Billy Burns 3P
- 9 Willi Heinz
- 1 Yann Thomas
- 2 Tom Lindsay
- 3 Paul Doran-Jones
- 4 Joe Latta
- 5 Mariano Galarza
- 6 Lewis Ludlow
- 7 Jacob Rowan (C)
- 8 Ben Morgan

- 16 Darren Dawiduk
- 17 Nick Wood
- 18 Josh McNulty
- 19 Tom Hicks
- 20 Elliott Stooke
- 21 Callum Braley
- 22 Charlie Sharples
- 23 Gareth Evans

levelling try.

Kelly Haimona missed the conversion and Gloucester followers breathed a sigh of relief as, from the restart, the Cherry and Whites were awarded a penalty and Burns landed a crucial kick.

Even the, the drama wasn't quite over. Zebre had one last chance to snatch a draw, but Beyers' long-range penalty attempt never threatened the posts.

PENALTIES CONCEDED

ZEBRE 9
GLOUCESTER 8



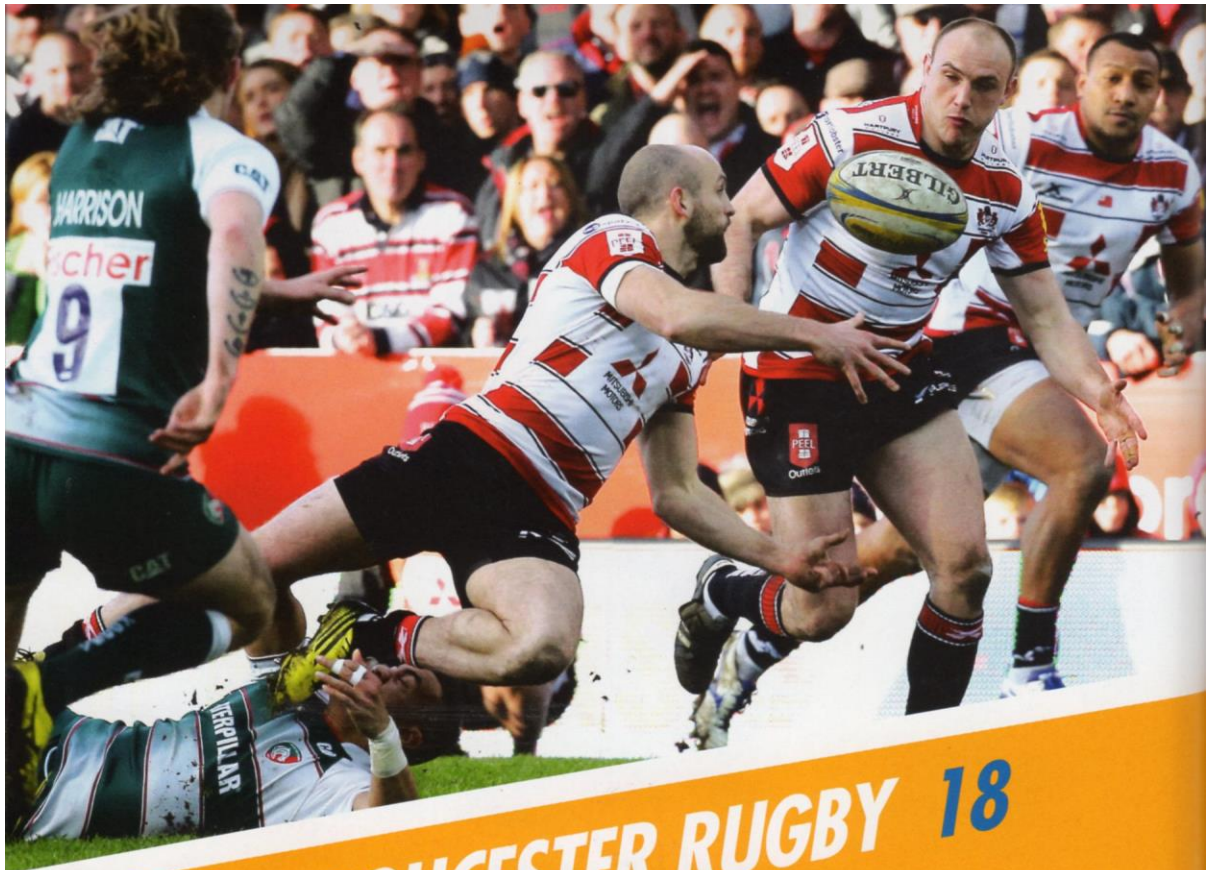
OFFICIAL LEGAL PARTNER

APPLYING THE LAW

There were very few, if any, contentious decisions throughout the 80 minutes.

Neither team seemed to have too much to complain about as the game progressed, even Zebre who lost Federico Ruzzo to the sinbin.

However, referee Gary Conway did take centre stage in the final few minutes when he firstly awarded Gloucester the penalty which Billy Burns slotted to win the game, before awarding Zebre a chance to level matters – Ulrich Beyers was thankfully off target.



GLOUCESTER RUGBY 18

LEICESTER TIGERS 19



HALF TIME 15-7
ATTENDANCE 16,115
REFEREE JP Doyle

LEICESTER led this game for about 15 seconds of regular time. Crucially, it was the final 15 seconds and they escaped from Kingsholm with the four points tucked away in their back pocket.

The disappointment on the face of the squad was clear to see in a game, where they had impressed and done a lot right, except put a dogged Leicester Tigers team away.

The Tigers had been brushing their opponents aside in both the Aviva Premiership and European Rugby Champions Cup but, for

much of this game, the Cherry and Whites controlled territory and possession but just couldn't get out of reach, allowing the visitors the opening to snatch the victory.

In the end, Logivi'I Mulipola's last gasp try, coupled with Tommy Bell's nerveless conversion secured a single point win and left the hosts kicking at the turf in frustration, with Ben Morgan's softest of yellow cards proving costly.

Freddie Burns, on his return to his former haunt, was wayward from the tee early on in a fierce opening few minutes. The Shed loved it and let him know in no uncertain terms.

Steve McColl then launched a mammoth touch finder deep into the Tigers 22, and piled the pressure onto the visitors resulting in a home scrum after Paddy McAllister was held up



GRTV



Tom Savage told GRTV that the whole Gloucester team had put in a fantastic effort against Tigers

over the line.

From the resulting scrum platform, Ben Morgan made ground and Willi Heinz delivered the quickest of ruck balls for James Hook to step his way out of a pair of tackles to find the line.

Within seconds of the restart, Burns and Telusa Veainu made a pig's ear of a Hook clearance, and Billy Twelvetrees swooped to collect. Jeremy Thrush took the offload and as the ball was recycled David Halaifonua deftly offloaded inside to Morgan to

barge over.

Burns however then showed his class, collecting his own chip and, although Tom Croft was denied by a superb Heinz tackle, Marcos Ayerza plunged through a gap around the fringes to respond for Tigers.

Hook then chipped over a penalty for the hosts as Tommy Bell was swallowed up by a strong Gloucester chase, and the Cherry and Whites led by 8 at the break.

The double try swoop from Gloucester had clearly buoyed them in the first half, and the hosts would definitely have been targeting an equally dominant



THE GAME WAS VERY MUCH IN OUR CONTROL BUT A COUPLE OF KEY ERRORS AT KEY POINTS OF THE MATCH MEANT WE COULDN'T BUILD THE SCORE. DAVID HUMPHREYS

second period. The defence in particular had been superb, the commitment couldn't be questioned.

However, the Tigers were again in stern defensive mode themselves, for the first seventeen minutes of the half, the hosts were camped in the attacking 22, but couldn't break through.

It was a combination of organised defence, and good discipline and Gloucester couldn't turn the control and possession into points, opting on one occasion to kick to the corner unsuccessfully.

Tigers then struck. Peter Betham took Bell's offload after the latter fielded a high ball and combined

MATCHDAY SQUADS



GLOUCESTER RUGBY

- 15 Steve McColl
- 14 Charlie Sharples
- 13 Bill Meakes
- 12 Billy Twelvetrees
- 11 David Halaifonua
- 10 James Hook 1T 1C 2P
- 9 Willi Heinz
- 1 Paddy McAllister
- 2 Richard Hibbard
- 3 Paul Doran-Jones
- 4 Tom Savage
- 5 Jeremy Thrush
- 6 Sione Kalamafoni
- 7 Jacob Rowan
- 8 Ben Morgan 1T

- 16 Darren Dawidiuk
- 17 Nick Wood
- 18 Nicky Thomas
- 19 Mariano Galarza
- 20 Matt Kvesic
- 21 Greig Laidlaw
- 22 Billy Burns
- 23 Mark Atkinson



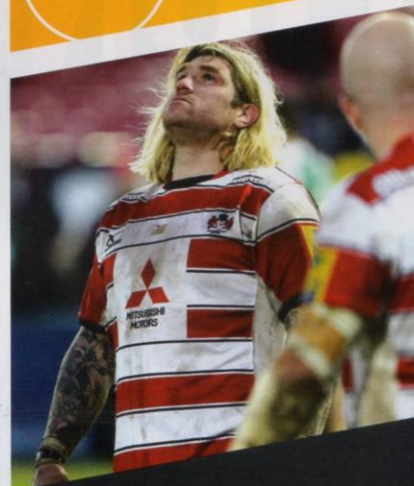
LEICESTER TIGERS

- 15 Tommy Bell 1C
- 14 Peter Betham
- 13 Mathew Tait
- 12 Matt Smith
- 11 Telusa Veainu 1T
- 10 Freddie Burns 1C
- 9 Sam Harrison
- 1 Marcos Ayerza 1T
- 2 Greg Bateman
- 3 Fraser Balmain
- 4 Dom Barrow
- 5 Graham Kitchener
- 6 Michael Fitzgerald
- 7 Tom Croft
- 8 Lachlan McCaffrey

- 16 Harry Thacker
- 17 Riccardo Brugnara
- 18 Logovi'i Mulipola 1T
- 19 Sebastian De Chaves
- 20 Jordan Crane
- 21 Jono Kitto
- 22 Gonzalo Camacho
- 23 Jack Roberts

with Veainu and Jordan Crane for the former to slide over for an impressive counter attack score.

Hook responded with a penalty, and the Cherry and Whites looked to consolidate the score. But, as time ran out, Ben Morgan was yellow carded for, in the TMO Graham Hughes' eyes, taking out Veainu on halfway, and then Mulipola strolled over from a half break from Tait to stun Kingsholm and steal the win.



OFFICIAL LEGAL PARTNER

APPLYING THE LAW

A couple of key second half decisions hurt Gloucester badly.

A man in front of the ball carrier ruined a catch and drive from five metres out with score beckoning, while Ben Morgan's yellow card left the Cherry and Whites a man short at a crucial time.

Both calls were technically correct but hurt all the same.

7-0
7-3
10-3
13-3
13-6
20-6
23-6

28-6



TODAY'S TEAMSHEET

GLOUCESTER RUGBY vs HARLEQUINS

Aviva Premiership Rugby - Round 12
Saturday 13th February 2016, KO 15:00 Kingsholm



BILLY BURNS	FULLBACK	15	FULLBACK	ROSS CHISHOLM
CHARLIE SHARPLES	RIGHT WING	14	RIGHT WING	MARLAND YARDE
BILL MEAKES	OUTSIDE CENTRE	13	OUTSIDE CENTRE	MATT HOPPER
BILLY TWELVETREES (C)	INSIDE CENTRE	12	INSIDE CENTRE	HARRY SLOAN
STEVE McCOLL <i>T</i>	LEFT WING	11	LEFT WING	CHARLIE WALKER <i>T. Visser</i>
JAMES HOOK <i>TCPPCP</i>	FLY HALF	10	FLY HALF	NICK EVANS (C) <i>PP</i>
WILLI HEINZ	SCRUM HALF	9	SCRUM HALF	TITO TEBALDI
PADDY McALLISTER	LOOSEHEAD PROP	1	LOOSEHEAD PROP	MARK LAMBERT
RICHARD HIBBARD	HOKKER	2	HOKKER	ROB BUCHANAN <i>J GRAY</i>
JOHN AFOA <i>W. HALL</i>	TIGHTHEAD PROP	3	TIGHTHEAD PROP	KYLE SINCKLER
TOM SAVAGE	LOCK	4	LOCK	GEORGE MERRICK
MARIANO GALARZA	LOCK	5	LOCK	JAMES HORWILL
SIONE KALAMAFONI	BLINDSIDE FLANKER	6	BLINDSIDE FLANKER	MAT LUAMANU <i>LUAMANU</i>
MATT KVESIC	OPENSIDE FLANKER	7	OPENSIDE FLANKER	LUKE WALLACE <i>WARD</i>
BEN MORGAN <i>T</i>	NUMBER 8	8	NUMBER 8	NICK EASTER <i>LUAMANU</i>
DARREN DAWIDIUK <i>J. LINDSAY</i>	REPLACEMENT	16	REPLACEMENT	JOE GRAY <i>J. CHISHOLM</i>
NICK WOOD <i>D. MURPHY</i>	REPLACEMENT	17	REPLACEMENT	OWEN EVANS
NICKY THOMAS <i>P. DURAN-JONES</i>	REPLACEMENT	18	REPLACEMENT	WILL COLLIER
JEREMY THRUSH	REPLACEMENT	19	REPLACEMENT	CHARLIE MATTHEWS
JACOB ROWAN	REPLACEMENT	20	REPLACEMENT	DAVE WARD <i>WARD</i>
CALLUM BRALEY	REPLACEMENT	21	REPLACEMENT	CALUM WATERS <i>WARD</i>
MARK ATKINSON	REPLACEMENT	22	REPLACEMENT	BEN BOTICA <i>W. STANLEY</i>
ROSS MORIARTY <i>R. COOK</i>	REPLACEMENT	23	REPLACEMENT	TIM SWIEL

Officials

Referee Wayne Barnes Assistant Referees Paul Burton MBE & Simon McConnell