

COVENTRY FOOTBALL CLUB RUGBY UNION



CLUB FOUNDED 1874-75

President: T. VENN.
Hon. Secretary: P. A. J. SHARP,
17 Asthill Grove, Coventry. Tel: 24812.

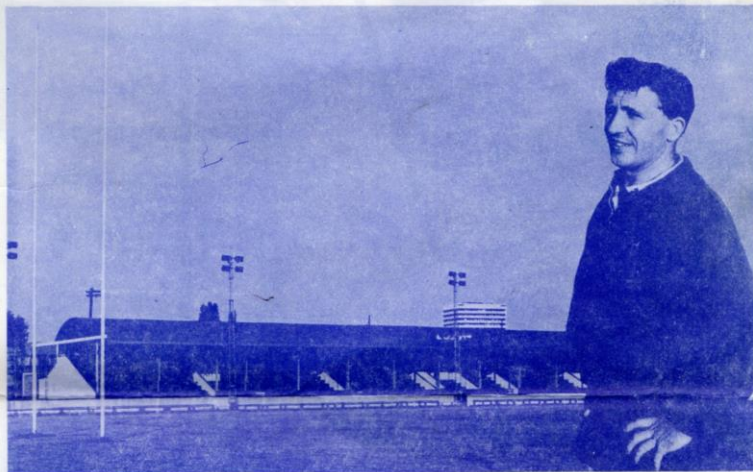
Though these notes were written before the Coventry team for tonight's match had been selected, it looked very much as if George Cole would be named to make a memorable 400th appearance for the club.

Looking back over George's wonderful career with Coventry, beginning with his senior debut against Rugby, on April 20, 1954, it is well-nigh impossible to pick out particular highlights — there have been so many.

His amazing record of 2,898 points for club and county speaks for itself, and is one which will be most difficult to match in modern Rugby Union. The accuracy of his left-footed kicks has won countless games for Coventry and for Warwickshire. But it would be grossly unfair to George to sum up his contribution to the game as that of a match-winning kicking-machine, pure and simple.

George has few peers in the art of reading a game and assessing the strengths and weaknesses of the opposition, and as Peter Jackson said in the "Evening Telegraph" on Saturday, "He has been an unofficial captain of Coventry for years."

Both at scrum half, and in more recent seasons at full-back, George's experience and



George Cole, depicted at Coundon Road, where so many of his club and county match winning successes have taken place over the last sixteen years.
(Photo by courtesy of The Coventry Evening Telegraph).

authority has time and again proved invaluable, and there is no reason to suppose that they will not continue to do so for many years to come.

George, incidentally, becomes the first back in the club's history to make 400 appearances, following in the footsteps of forwards Phil Judd, Ray Batstone, Alf Wyman and John Gardiner. He also needs only three more games to equal Phil's record

of 77 for Warwickshire.

Cov have already completed the double over Gloucester this season with a 15-9 win at Kingsholm in September and a 20-9 triumph at Coundon Road last month, so tonight's Midland Floodlit Alliance game provides the opportunity to bid for a unique treble.

But Gloucester are one of Cov's most respected opponents, and we expect to see the customary close-fought game. We understand that Leicester do not intend to take part in the Alliance for future seasons. But the extra floodlit games against Moseley, Gloucester and Cheltenham have already become an integral part of Cov's fixture-list and we look forward to many more such games in seasons to come.

Gloucester, with 18 wins and 15 defeats to their credit this season, are enjoying mixed fortunes this season, but as always they have been hard hit by representative calls. Terry Hopson, Alan Brinn, Phil Hayward and Bob Smith are among those who have contributed to Gloucestershire's success in reaching next month's County Championship semi-finals.

THE RED HOUSE GROUP



**The Teams and their
Staunch Supporters
are carried away by our
Modern Luxury Coaches**

R.H.M.S. - B.T.S. - BUNTY - GODIVA - BANTAM

**25 to 52 Seater Coaches for Hire
Tours and Excursions from Pool Meadow
Advertised Trips to Sporting Events**

Head Office: Cromwell Street Cov. 89004/7
Booking Offices:
Priority Street, Pool Meadow Cov. 89008
5, Fairfax Street Cov. 89009
32, King Street, Bedworth 3685

Coventry v. Gloucester

TUESDAY, 27th JANUARY, 1970

Programme
6d

Kick-Off 7.30 pm

Referee: Mr. J. G. Aynsley, East Midlands

Coventry

No.	Name	
1	G. H. Cole	<i>Full Back</i>
2	D. J. Duckham	<i>Right Wing</i>
3	R. E. Griffiths	<i>Right Centre</i>
4	C. P. Wheatley	<i>Left Centre</i>
5	J. P. Bolton	<i>Left Wing</i>
6	T. Andrews	<i>Stand Off</i>
7	W. J. Gittings (Capt.)	<i>Scrum Half</i>
8	J. M. Broderick	<i>Forwards</i>
9	J. Gallagher	
10	G. R. Creed	
11	H. Prosser	
12	B. Ninnis	
13	R. N. Creed	
14	L. J. Rolinson	
15	B. C. Holt	

Gloucester

Name	No.
R. Etheridge	1
R. Clewes	2
T. Palmer	3
A. Fielding	4
D. Brooks	5
T. Hopson	6
J. Spalding	7
M. Burton	8
M. Nicholls	9
R. Cowling	10
A. Brinn	11
J. Jarrett	12
P. Hayward	13
M. Potter	14
R. Smith (Capt.)	15

