

OFFICIAL PROGRAMME—Price 3d.



GRAND RUGBY FOOTBALL MATCH :

**GLOUCESTERSHIRE**

v.

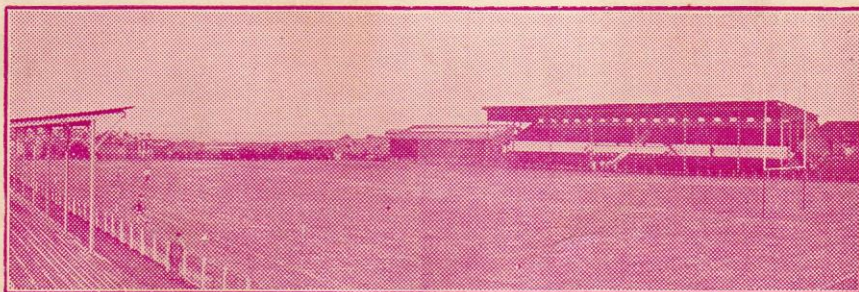
**CORNWALL**

AT THE

**MEMORIAL GROUND, BRISTOL,**

**SATURDAY, DECEMBER 14th, 1946,**

KICK-OFF 2.30 p.m.



(Bristol Evening World Photo)

### OUR VISITORS.

We are delighted to welcome the loyal and capable XV. that represent Cornwall to-day. The hospitality and fine sporting spirit of Cornwall's Rugby men are well known throughout the West Country. To visit one of the many centres of Rugby in the Duchy is a rare treat, the Rugger is good the entertainment outstanding. We hope that our visitors will have a thoroughly enjoyable game and return to their delightful county with the happiest memories of their visit to Gloucestershire.

## GLOUCESTERSHIRE NOTES.



President - Mr. T. BARROW, Bristol.



### County Representatives on R.U.

1898—1900	-	H. J. BOUGHTON
1900—1909	-	F. GRAVES-SMITH
1909—1913	-	E. S. BOSTOCK-SMITH
1913—1931	-	W. T. PEARCE
1931—	-	A. T. VOYCE



### COUNTY HISTORY.

1891	First County Match
	Gloucestershire Champion County
1909—10	Gloucestershire beat Yorkshire at Gloucester
1912—13	„ beat Cumberland at Carlisle
1919—20	„ beat Yorkshire at Bradford
1920—21	„ beat Leicestershire at Gloucester
1921—22	„ beat North Midlands at Birm'ham
1929—30	„ beat Lancashire at Liverpool
1930—31	„ beat Warwickshire at Gloucester
1931—32	„ beat Durham at Blaydon
1936—37	„ beat East Midlands at Bristol



### Will Gloucestershire be there ?

This year's Semi-Final will be played in the South-East and the Final will be played either in the Midlands or the North.



15

## TEAMS.

3

**GLOUCESTERSHIRE**

Colours—White with County Crest

- 1 H. GRIBBLE  
Stroud
- 2 S. FARMER  
Gloucester
- 3 C. BOWELL  
Bristol
- 4 K. DANIEL *1 TRY*  
Gloucester
- 5 S. DANGERFIELD  
Gloucester *1 TRY*
- 6 W. E. JONES *1 CON  
1 PEN  
1 DROP*  
Gloucester
- 7 ~~H. TANNER~~  
Cardiff  
*H. J. PARFITT  
LYDNEY*
- 8 G. A. GIBBS  
Bristol
- 9 F. C. HILL  
Bristol
- 10 T. DAY  
Gloucester
- 11 R. MORRIS (Capt.)  
Gloucester
- 12 A. MEREDITH  
Bristol
- 14 A. HUDSON  
Gloucester
- 15 S. BETTERTON  
Stroud
- 16 J. THORNTON  
Gloucester

Back

Three-qrs.  
RW. LW.

RC. LC.

LC. RC.

LW. RW.

Stand-off

Scrum  
Half

Forwards

**CORNWALL**

Colours—Black with Amber Rings

- F. PARTRIDGE A  
Redruth
- M. TERRY E  
Penzance and Newlyn
- E. K. SCOTT (Capt.) D  
St. Mary's Hospital
- R. D. KENNEDY C  
Camborne School of Mines
- J. McSWINEY B  
Redruth and Oxford
- H. OLIVER *1 TRY* F  
St. Ives
- T. G. WILLIAMS G  
Camborne School of Mines
- A. L. RICHARDS H  
Plymouth Albion
- L. SEMMENS I
- T. BIDGOOD J  
Devonport Services
- J. GEORGE K  
Falmouth
- T. KELLY L  
Camborne
- W. A. PHILLIPS M  
Redruth
- K. VIVIAN N  
Camborne and St. John's  
Cambridge
- V. G. ROBERTS O  
Penryn

Referee—Mr. J. A. THORPE (Yorkshire.)

Linesmen—T. MILLINGTON and Lt. Col. J. DANIEL.