

THE PRIDE THE PASSION THE HONOUR THE HISTORY

GLOUCESTER RUGBY



ONLY £3



EUROPEAN ACTION
Replay

Vs. MONT-DE-MARSAN
Vs. BORDEAUX BÈGLES

from
to **ALLBLACK**
CHERRY
WHITE

EXCLUSIVE INTERVIEW INSIDE

ABN-AMRO Commercial Finance

Today's Matchday Sponsor

JEWSON

Main Club Sponsor

Vs. **LEICESTER TIGERS**

AVIVA PREMIERSHIP RUGBY,
17TH OCTOBER 2012, 4.45PM KICK OFF



@ WWW.GLOUCESTERRUGBY.CO.UK

f WWW.FACEBOOK.COM/GLOUCESTERRUGBY

@GLOUCESTERRUGBY

AVIVA PREMIERSHIP RUGBY

AVIVA

GUINNESS

QBE

LAND-ROVER

J.P.Morgan
Asset Management

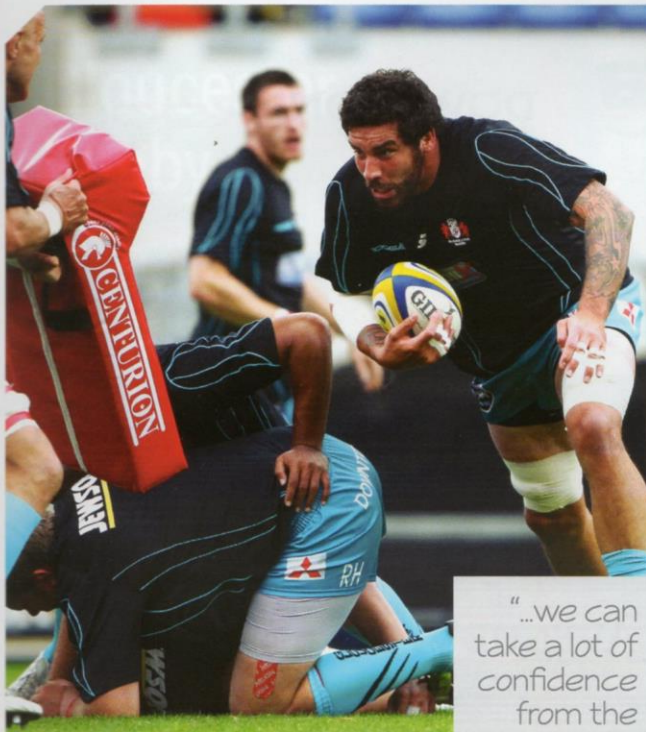
GILBERT

GILBERT

HILTON HHONORS

CAPTAIN'S *Corner*

Jim Hamilton



IT'S back to our bread and butter this evening with the visit of Leicester Tigers as Aviva Premiership Rugby returns.

The Premiership may have taken a break for a couple of weeks, but we certainly didn't! The two matches we've played in the Amlin Challenge Cup since we defeated Bath here three weeks ago, have been pretty tough encounters.

I referred to the Mont de Marsan game in my programme notes last week, when I also predicted that Bordeaux-Begles would be no pushovers and would be coming to Kingsholm to give us a game.

I got that one pretty much spot on! Although we played some of our best rugby of the season in the first half, and had the try scoring bonus point in the bag before half time, the French side refused to throw in the towel.

"...we can take a lot of confidence from the fact that we've won five in a row. We've had to dog out some close wins during that stretch and that, in itself, creates self belief."

Credit to them, they'd already given us one or two things to think about in the first half and did more than enough to keep us on our toes after the break.

It was a frustrating 40 minutes, for you supporters as well as ourselves on the pitch. We'd have loved nothing better than to kick on and score more tries in the second half.

Nigel (Davies) told the media after the game that the dressing room was pretty flat following the final whistle and he was right. We didn't achieve what we wanted to in the second half and that was disappointing for everyone.

But, there's no time to dwell too much on it. You take what you can from it but you have to move on and focus on the next challenge that lies ahead.

And challenges don't come much bigger than the Leicester Tigers!

Having started my playing career at Welford Road, it's always one that I look out for when the fixtures come out for obvious reasons!

And recent games between the two sides here at Kingsholm have been hard fought and close run affairs. The last three meetings have been decided by less than a score.

I read a few things in the papers about Leicester being under pressure going into last weekend's Heineken Cup game against the Ospreys and I knew they'd simply use that as ammunition to drive them on.

It was the same last season when they had a rough start to the season with so many players away at the Rugby World Cup. They ended up winning the LV= Cup and making the Premiership Final...

As a team, though, we do seem to thrive in the big games and we can take a lot of confidence from the fact that we've won five in a row. We've had to dog out some close wins during that stretch and that, in itself, creates self belief.

We'd be naïve to take anything for granted against a team like Leicester, we fully appreciate the challenge today.

However, backed, as ever, by fantastic home support, we'll be up for this one!

Enjoy the game!



"We will be doing
our utmost to
perform to the best
of our ability for you all,
and hopefully we can come
away with the win."

COACH'S *Notes*

Director of Rugby, Nigel Davies

WITH our first stage of European competition successfully behind us, we now look forward to a crucial couple of games in our domestic league – the Aviva Premiership.

The League is where we will judge ourselves this year and we have clear goals and targets with all our efforts focused towards those.

We are trying to build strong foundations within our game, which will hopefully allow us to compete regularly within what is one of the toughest leagues in the Northern

I would like to extend a very warm welcome to Leicester Tigers and their supporters here at Kingsholm today.

It's fixtures like these that make our competition special and unique, when you have two cities with proud rugby traditions coming together to do battle on the field and represent their identities with pride!

The support we have received this season for the team has been fantastic, both home and away, and I would like to take the opportunity on behalf of myself, the coaches, the management and the players to thank you for the efforts and commitment in supporting us.

I can assure you that we never, ever take it for granted and it is a big part of being associated with Gloucester Rugby.

No doubt we will have a near full house here at Kingsholm today. We will be doing our utmost to perform to the best of our ability for you all, and hopefully we can come away with the win.

So far this season this team has battled hard for what we have achieved, and we have won games showing just glimpses of what our potential is.

Even though there are elements of our

game which we are pleased with, today's game will require us to play near our full potential for the entirety of the 80 minutes!

Nigel



Another battling performance will be required today

Hemisphere.

The first phase of games in the Aviva Premiership has seen us start well. However, today presents us with a test of where we are, and one that I am sure all our supporters have been looking forward to as much as us!



A TESTING FORTNIGHT

Nick Purewal's

View from **The Citizen**

“We’re preparing to take on two of the league’s top teams, and if we can do well out of that we’ll take a lot of confidence from it.”

As acid tests go, Gloucester’s next fortnight must rank among the toughest the Premiership can offer.

The Cherry and Whites revamp under new rugby director Nigel Davies has gathered impressive pace in the season’s two months to date.

But all at Kingsholm concede that progress on the results front has been tempered by teething troubles where the game plan is concerned.

Gloucester have not lost since the season’s opening day Kingsholm defeat to Northampton.

Today Davies’ men face their first test against one of the league’s traditional powers, as Leicester Tigers stalk into town.

And next weekend the Cherry and Whites travel to Premiership champions Harlequins.

England wing Charlie Sharples admits Gloucester require rapid improvement in order to negotiate these two clashes in credit.

The former St Peter’s High School pupil explained:

“This is going to be a real test for us to see where we’re at as a squad. We’ve had a pretty successful start to the season, we’ve had some good wins but these two games are going to be a real marker for us to see where

we’re at.

“We’re preparing to take on two of the league’s top teams, and if we can do well out of that we’ll take a lot of confidence from it.

“I think everyone will be excited for a big game on Saturday and we need to put in a



Bordeaux proved to be tough opposition in the Challenge Cup

big performance.

“We’ll have to raise the bar from our Bordeaux win on Thursday to beat a team like



Charlie in action

Leicester, but you sometimes respond to the situation and hopefully we'll naturally raise to that level.

"Thursday's game last week has given us a little bit of time to rest and hopefully we'll be fresh for what is a huge game for us and the biggest game of the season so far really."

Gloucester racked up four tries in 37 minutes in last week's 25-13 Bordeaux victory.

But, after the break, they failed to add to that tally, just when everyone at Kingsholm was gearing up for a try rampage.

Sharples handed the credit for his two tries to the once again imperious James Simpson-Daniel – but then quickly admitted the Cherry and Whites cannot accept any more inconsistent performances.

Gloucester's Premiership top-six, and even top-four ambitions, will come under intense scrutiny in the next fortnight, and Sharples knows it is high time early promise is turned into impressive solidity.

He continued:

"A lot of credit needs to go to Sinbad really, because I think he had a hand in each one of those tries.

this is

Gloucestershire

- Gloucestershire and Somerset badger cull delayed until Summer
- Gloucester city centre 'bombsite' could become car park
- Gloucestershire MPs pay comes under review
- 999 calls put on hold due to fault



"In the second half our backline never really got going, it was very stop-start. But it was still enjoyable to be on the end of a couple before the break.

"We're happy to get some tries and be part of a team win, but it was a disappointing second half.

"We showed glimpses of what we can do but we never managed to get that going again after the break.

"Resilience is a word that Nigel has used, there's plenty of that and plenty of grit. It was good to keep them out for 39 minutes, and a shame we didn't quite hold them out full-stop.

"The most important thing was that we got the win, so we can't be too down on ourselves about that.

"But we've got to tighten up now. If we slip off the pace the way we did against Bordeaux then Leicester will punish us, there's no two ways about that.

"Everyone is aware of that and focused now to ensure we can produce our best performance of the season, hopefully when it matters most."

GLOUCESTER RUGBY HERITAGE

www.gloucester rugby heritage.org.uk

THE PRIDE THE PASSION THE HONOUR THE HISTORY

A BIT OF PREVIOUS

Today is the 209th meeting between Gloucester and Leicester. The record is fairly even, Gloucester having won 104 and lost 96 (points for 2,743 against 2,530).

The Castle Grim factor has given Gloucester a significant advantage at home, with 71 wins, 26 losses and 4 draws (1,598 points for, 964 against) at Kingsholm.

THE EARLY YEARS

The Leicester club dates back to 1880, but it was a few years before they took on Gloucester, who travelled to Leicester for the first match on 31st October 1891.

They came up against a Leicester side resplendent in new jerseys with scarlet, green and white vertical stripes. This was the first season they adopted the colours in which they have remained ever since, although the change from stripes to hoops was not made until 1895.

Many will also remember Leicester as being one of the last clubs (along with Bristol) to have letters, rather than numbers, on their jerseys.

That first match in 1891 resulted in a 15-0 victory for Gloucester, with tries from Walter Jackson, Trevor Powell and Walter Taylor, all of them converted by Jackson.

After the game the Gloucester team were mightily impressed by the "substantial meat tea" provided by their hosts – future fixtures were assured.

Perhaps Leicester had shown too reverential an attitude during the game, since they had four members of the clergy in their team, all in the backs.



Gloucester's three clergymen players: Kit Tanner, Mervyn Hughes and Bill Phillips

Many years later, Gloucester almost matched this by playing three clergymen (Kit Tanner, Mervyn Hughes and Bill Phillips) in the November 1937 fixture, which Gloucester won 14-9.

The first fixture at Kingsholm was played on 2nd January 1892, when Gloucester won by 3 tries to nil, with

Walter Jackson, Walter Taylor and C Williams scoring.

By the time Gloucester next visited Leicester on 19th November 1892, the game was played at the new Welford Road ground. Gloucester won again, 16-0, with 2 tries from Walter Jackson and 3 from Walter Taylor, Jackson converting 2 of them (a try then counted for 2 points and a conversion 3). Full reports of these early matches can be read on our website.

The history of the development of the two clubs has much in common – after moving into their permanent homes in 1891/2, England internationals were hosted and changing rooms built in the early 1900s, new stands in the 1920s, and floodlights installed in the 1960s.

By which time, Leicester players recall that the highlight of away games at Kingsholm

The Walters: Taylor and (inset) Jackson



was the excellent lunch for which they stopped off in Stratford-on-Avon on the way down.

BIGGEST WINS

21st March 1998
at Welford Road
Leicester 12 - Gloucester 53

Leicester put out a weakened team in the semi-final of the C&G Cup. In a feast of tries, Terry Fanolua scored 3, Phillipe St Andre 2, and Audley Lumsden and Dave Sims one each, Mark Mapletoft converting all 7 and kicking 2 penalties.

4th March 2012
at Welford Road
Leicester 36 - Gloucester 3

Leicester's biggest league victory against Gloucester.

1st October 1999
at Kingsholm
Gloucester 36 - Leicester 4

Gloucester's biggest league win against the Tigers, 36-4. Chris Catling, Richard Tombs, Ian Sanders scored tries, with a penalty try and 4 conversions and 2 penalties from Simon Mannix.

MEMORABLE MATCHES

15th April 1978
John Player Cup Final
Gloucester 6 - Leicester 3

This was Leicester's first appearance in a Twickenham final. Gloucester was the premier club in England that season and any doubts were dispelled when they won the cup. The score may have been close, but Gloucester dominated territory and possession, and scored the only try of the match.

Richard Mogg was the hero of the final, not only scoring Gloucester's try, which Peter



Cartoon and photo of the 1927 match at Kingsholm



Butler converted, but also pulling off a match-saving tackle close to the final whistle.

On the way to the final Gloucester had beaten the holders Gosforth, Wasps and Harlequins.

Commemorative ties (which had been produced before the game!) were presented to the players and the Mayor gave a civic reception for the team in the Guildhall.

8th April 1997
Courage League
Gloucester 32 - Leicester 30

As the Citizen put it: "The script was perfectly written. There were 80 – or actually 90 – minutes of non-stop action, a bit of violence, two amazing twists in the tail of the plot, and, although there were no bedroom scenes, boy, there was passion from the cast of 1000's."

An incredibly exciting Tuesday evening game, with Gloucester squaring the score at the death with a Phil Greening try in the corner, which Mark Mapletoft converted from the touch line to take the lead.

There were about two minutes left on the clock, and the ref then proceeded to play interminable injury time. Leicester had a five yard line-out but could not score. The tension by the end was unbearable.

16 April 2011
Aviva Premiership
Leicester 41 - Gloucester 41

An incredibly exciting game, with Eliota Fuimaono-Sapolo saving the game for Gloucester with a last minute interception to run almost the length of the field to score, and Freddie Burns' conversion drawing the match.

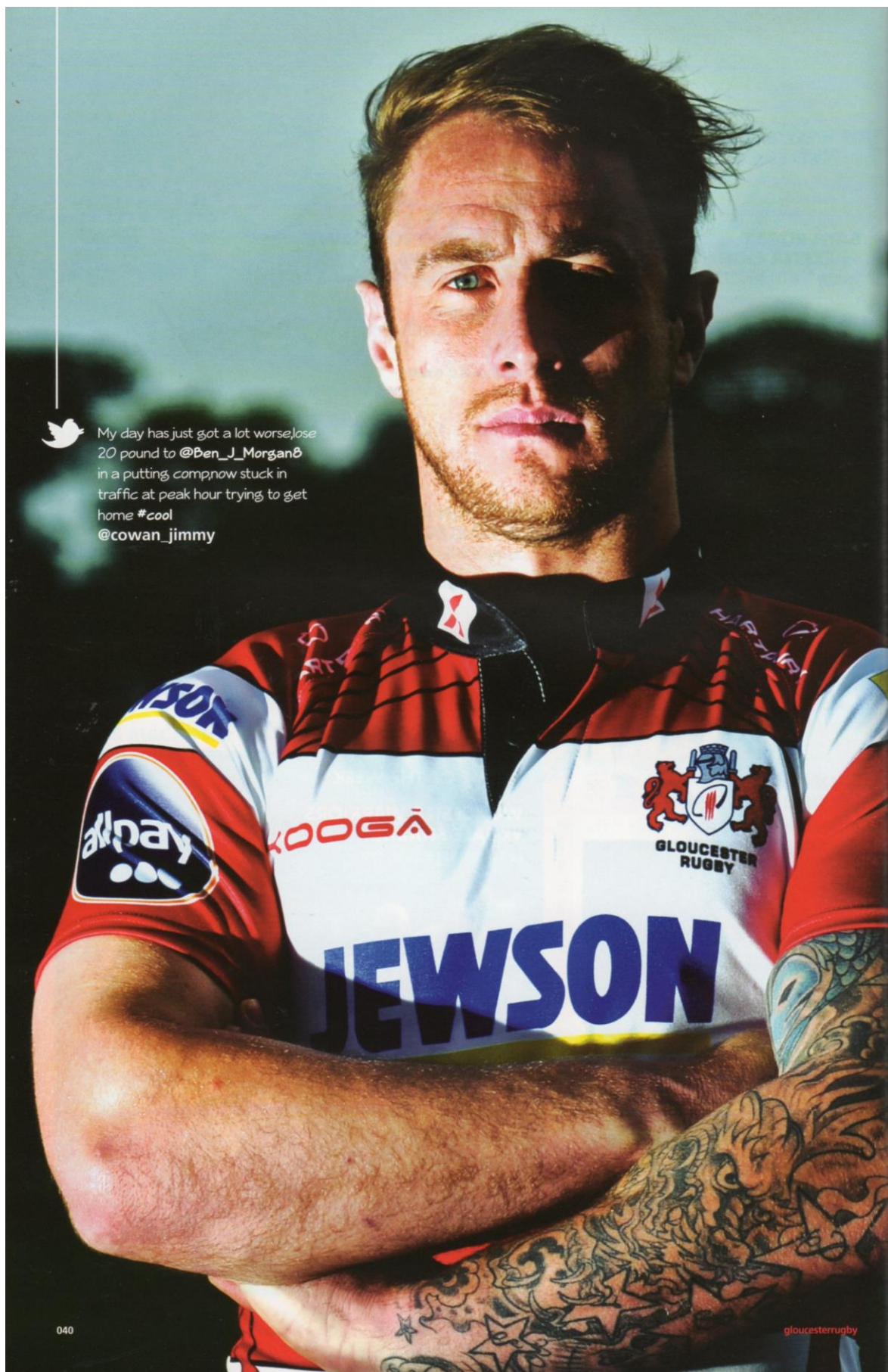
Bonus
CHERRIES

GLOUCESTER RUGBY
HERITAGE

The guilty men – the Gloucester Rugby Heritage team which is bringing you these articles in each match programme this season – Chris Collier, Dick Williams, Malc King, John Theyers, John Cowen.



My day has just got a lot worse, lose
20 pound to @Ben_J_Morgan8
in a putting comp, now stuck in
traffic at peak hour trying to get
home #cool
@cowan_jimmy



The Elusive **KINGSHOLM** **KIWI**



ou could forgive Jimmy Cowan for perhaps taking it a bit easy after the events of 12 months ago.

After all, only Mike Tindall in the current Gloucester Rugby set up, can fully identify with the experience of winning the Rugby World Cup.

And Tins didn't have the weight of expectation of a hungry-for-success New Zealand public stalking his every step in the tournament.

Yet, having played his part in the All Blacks lifting the William Webb Ellis trophy, the Gore born scrum half immediately turned his attention to what he still wanted to achieve in the game of rugby.

One of those ambitions, of course, was to play in the Northern Hemisphere.

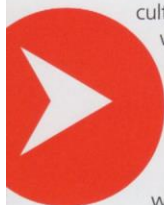
So, here he is at Gloucester, where he is going about his trade with as much enthusiasm and energy as ever, as he explained at a windswept Hartpury training ground this week.

"For sure. That was a focus of mine going forward, I certainly wasn't here to wind down.

"If anything, it was a kick start as I just needed a change in my game. I'd been doing the same thing year in and year out for ten or twelve years in New Zealand rugby.

"It was a great chance for me to come over here and experience a





culture of rugby that was different to what I'd experienced in New Zealand. I'm immersing myself in that and it's been great so far, I've really enjoyed it.

"I made the decision post World Cup that I'd achieved everything I wanted to in New Zealand rugby. The style of rugby in the Premiership suited my game – it's physical, not forward orientated, but it's about keeping the ball in front of the forwards."

A man with his rugby resume wouldn't have been short of suitors, but he quickly identified Gloucester as a potential home from home.

"I just felt there was a great balance here at Gloucester with some good backs and a hardy forward pack.

"When I made the decision after the World Cup, my manager put the word out and Gloucester were looking for a half back. It all kind of went from there.

"I was fortunate that they came looking. I did a bit of research and what I found reminded me of my club back home in Southland.

"I feel it's the number one sport around here, with a great fan base and people take real pride in wearing the Gloucester jersey.

"That's why I play the game. I'm a passionate man and I love playing rugby. I wear my heart on my sleeve when I'm playing and I think that's what's expected here at Gloucester.

"It's certainly lived up to that in the few weeks that I've been here. It's been an amazing experience to date and I'm looking forward to more of it."

Prior to arriving at Gloucester, though, there were still certain things to achieve back home in New Zealand and the 30 year old explained why it was important for him to do so.

"It's always tough signing contracts prior to campaigns, and I signed the Gloucester one back in January when I still had a year to run on my New Zealand one.

"And I still had some goals to achieve in New Zealand before I left – to play 100 Super Rugby games for the Highlanders and 100 provincial games for Southland.

"On top of the 50 Tests I'd played for New Zealand, those milestones were important to me and I was really pleased to get there.

"It meant there was no stone left unturned in New Zealand rugby and I could leave happy with what I'd achieved."

Back to that World Cup win. Since David Kirk captained the All Blacks to success back in 1987, a whole generation of New Zealanders have been waiting to celebrate a second



▲ Jimmy has fitted in quickly with the rugby ethos at Gloucester

triumph – the expectation must have been huge?

"There was a lot of hype as we hadn't won the thing for twenty odd years and a lot of pressure. But there's always going to be pressure when you're playing for the All Blacks.

"There was a lot of planning went into it. Quite a few of the management and the playing group had been involved in 2007 when we were unsuccessful and we were determined to go one better.

"It was a close finish in 2011 but we got it right. It was satisfying, there was a lot of relief to finally achieve that goal after four years of planning and work.

"The way we did it, having lost a host of key players, was special as well. In a way, it still hasn't really sunk in yet. I'm sure it will in time as I look back upon my career.

"But I'm still going about my business at the moment so I'll reflect upon it all once I come to the end of my career."

And this particular chapter of his career got off to a lively start as his first Gloucester appearance was against the club's local rivals, Bath, a side who also featured a familiar foe from back home.

"I was very lucky to have the Bath game as my first one in the Gloucester jersey. I've been involved in local rivalries before and the boys soon let me know how much this one meant!

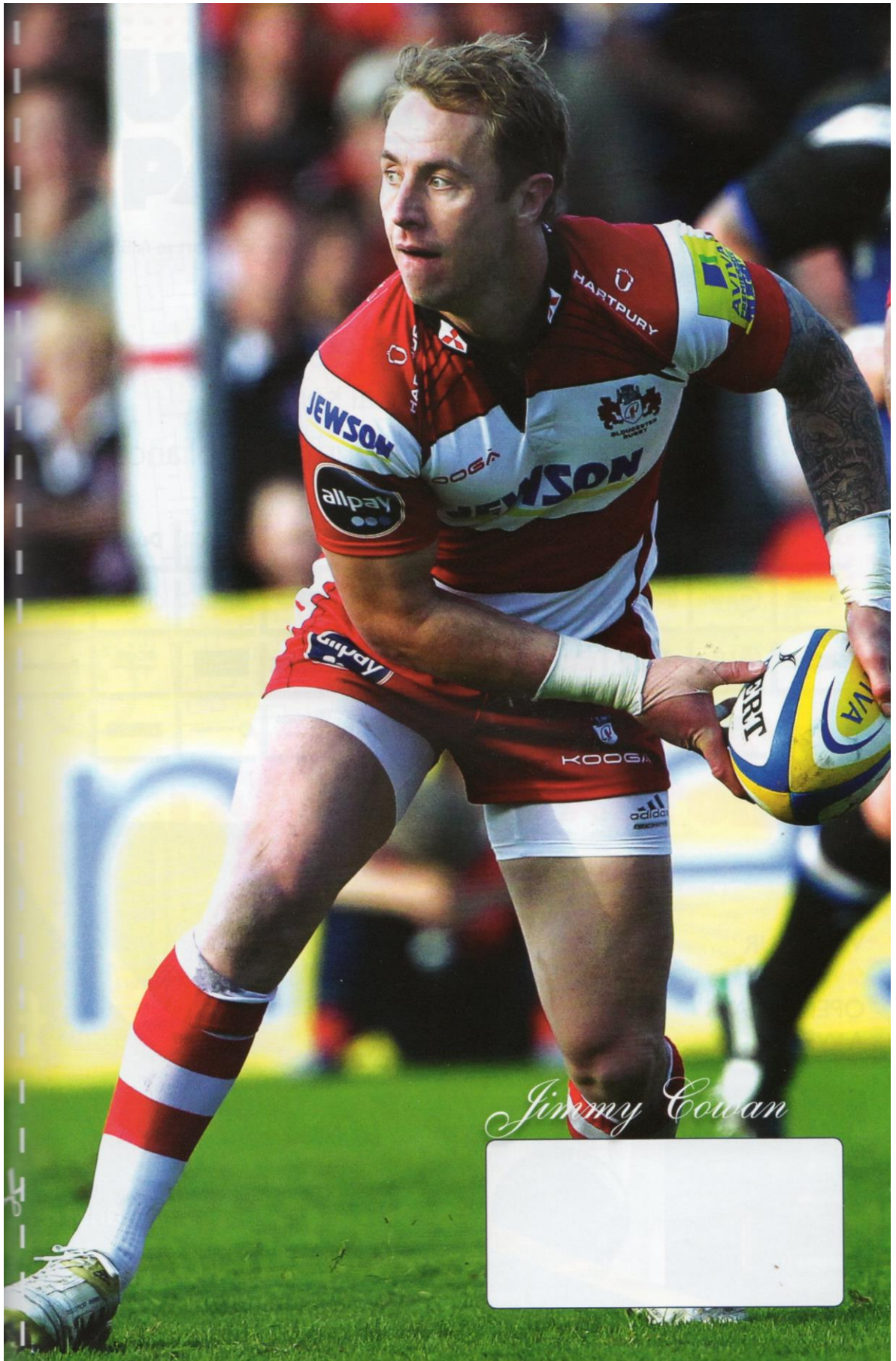
"It was a great occasion and it's still etched vividly in my memory. I hope there's going to be more times like that here at Gloucester. It was a great start.

"I came up against my old mate Stephen Donald of course. I've faced him plenty of times back home in New Zealand and not come out on top too many times.

"So it was good to get one over him, and good for the banter that night!"



"It was a great occasion and it's still etched vividly in my memory. I hope there's going to be more times like that here at Gloucester. It was a great start."



Kingsholm News

with Bob Fenton

"If you are looking for some shards of light in this statistical gloom you could hang on to the fact that the Leicester team only boasts one monster called Tuilagi!"

My boss is here today, he's up in the posh seats somewhere, so I had better make this good and be on my best behaviour...

What do we make of the last outing at Kingsholm then? To say the second half against Bordeaux-Begles was uninspiring, would be a bit of an insult to the most uninspiring thing you could think of.

It was the kind of 40 minutes that seemed to last whole lot longer, but it happens sometimes. At half time – four tries to the good – I reckon everyone in the place thought we were going to kick on and romp home by a cricket score.

Wasn't to be, though – for whatever reason we just failed to fire. Games like that happen every now and then, they're best consigned to memory the minute the referee blows for full time.

On the positive side we got the bonus point, so job done. We always knew that our group was going to come down to two games – home and away against London Irish – nothing's changed, that's still the way who goes on and who goes out will be decided.

The game did, though, give Jimmy Cowan his first 80 minutes since he arrived. I did think he was going to get a ten minute rest at one point but he got away with it!

The debate around him has been interesting. For me it'll take more than three games for him

to settle in. He looks what he is though – a hugely experienced scrum half who knows exactly what he is all about.

I particularly like the way he directs the forwards, cajoling, pulling and pushing them around in the mauls and generally directing traffic – something we haven't really seen since Andy Gomarsall was here.

I'm not sure we can read too much into the European game, with Billy T fitting in at 10 – a position he himself has said is not his favoured spot – it didn't really spark.

I'm willing to bet a pint or two that, when he clicks with Freddie, we will see something quite special there. And that's not to mention the impact he is going to have on the likes of Dan Robson.

His clash with Leicester's Ben Youngs – who is looking like he is close to returning to his best form – is going to be interesting. Both are a bit 'spikey' and you'd get pretty good odds on them having some sort of confrontation before the 80 minutes is up. It's going to make for compelling viewing, that's for sure.

So, after a couple of what can best be described as 'stuttering performances' against two French sides in the Amlin Cup, it's back to the meat and drink of the Premiership and – with no disrespect to the sides we have played so far – this is the first real test of the season.

Games don't come much tougher than

Leicester. While they may not be having it all their own way at the top these days, you just know that they have quality throughout the side.

Last week, for all of 60 minutes it looked like they were going to struggle to overcome the Ospreys in the Heineken Cup. Ten minutes later they were three tries to the good and battering their way to a fourth.

If you take the trouble to consult the statistics pages on the Premiership Rugby website, your sense of foreboding will only deepen - in 47 Premiership games they have

won 29, scored 30 more tries than we have and have racked up over 1,000 points against us.

Courtesy of my brilliant maths (and a calculator), the average scores over the 47 matches is Leicester 24 - Gloucester 18. At least we get the bonus point!

If you are looking for some shards of light in this statistical gloom you could hang on to the fact that the Leicester team only boasts one monster called Tuilagi!

Little Manu is on his own since big - and I mean BIG - brother Alesana headed over to Japan. Manu is by far the smallest of the giants - he must have been last to the dinner table at Chez Tuilagi - and tips the scales at a mere 110kgs.

No doubt the mad scientists who work in the gloom below Welford Road are awaiting the next big storm to strike and bring the next gargantuan to life, but in the meantime they have to rely on the seemingly tiny Nicky Goneva to fill his oversized shirt. Little... a 97kg winger! I remember when they were the little guys who were more at risk of hypothermia than coming into contact with any heavy traffic.

But sport's not like that, it's not about statistics and what has happened - it's about the here and now.

Yes - man for man the 'experts' might be tempted to look down the team lists and say 'that's it, it's all over,'

Luckily the experts are regularly proved to be as clueless as the rest of us when it comes to predictions. I've said before that I believe there is a growing team spirit in the camp that, together with the Kingsholm effect, counts for something.

I guess we'll know the answer by about 6:30pm this evening!

Gomars directing the traffic back in 2002



ACTION *Replay*

MONT-DE-MARSAN GLOUCESTER RUGBY

06
11



MONT-DE-MARSAN POINTS SCORERS



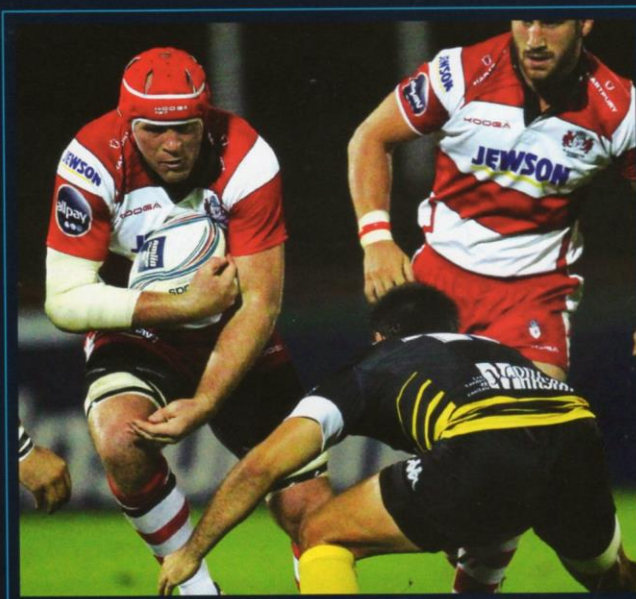
PENS: Claverie (54, 76)

GLOUCESTER RUGBY POINTS SCORERS



TRY: Clark (29)

PENS: Taylor (52), Twelvetrees (61)



Gloucester Rugby travelled to South West France to open their 2012-13 Amlin Challenge Cup campaign, knowing that there's no such thing as an easy game on French soil.

Mont de Marsan may have been struggling in the Top 14, without a victory to their name, but European action gave them an opportunity to forget about these woes for a couple of weeks.

And an obdurate, defensive performance from the French side, in addition to some appalling weather conditions, meant that Gloucester had to dig deep to secure a tight 11-6 victory.

In an ideal world, Nigel Davies' side would have liked to play a more expansive game in a bid to win the game by scoring tries rather than kicking penalties.

But, with the ball as slippery as a bar of soap in the bath, a pragmatic approach was called for.

11TH OCTOBER 2012, 20:30 KO
STADE GUY BONIFACE
AMLIN CHALLENGE CUP: ROUND 1



It wasn't a game where there was individual skill on display by the bucket load – the weather conditions put paid to that.

But, after missing several weeks with injury, it was great to see Charlie Sharples rising high to claim a cross kick from Tim Taylor and very nearly wriggling his way clear for a try.

The Cherry and Whites dominated territory and possession but simply couldn't get the ball over the line in the face of some spirited defence from the home side.

Ian Clark's first half try was the exception to this, as Gloucester coolly took advantage of a neat break from Dave Lewis. However, they weren't able to build upon this and the narrow lead meant that Mont de Marsan were always in the game.

It was an encounter that bordered on the feisty throughout and tempers were finally lost as the hour mark approached.

Gloucester were already seething after a number of apparent off the ball incidents and, eventually, Andy Hazell and Matt Cox were shown red and yellow cards respectively for trying to sort things out themselves.

As a result, Gloucester had to play out the remaining 20 or so minutes with reduced numbers but did so with admirable composure in the circumstances.

Billy Twelvetrees came off the bench to kick an important penalty and also pinned the French side back with some superb touch finders.

As the final whistle blew, Gloucester could reflect on a fourth win in succession in all competitions, four Amlin Challenge Cup points earned the hard way, and look forward to round two action at home to Bordeaux-Begles.

Nigel Davies

Director of Rugby

"It's always difficult to come away and win in France, they defend their home turf with their lives. And we got a result so we move on."

"The old heads helped to see us through but we also brought on some younger players and it was a great experience for them."

MONT-DE-MARSAN



#	POS	NAME
15	FB	Jean-Baptiste Claverie
14	W	Jordan Beaulavon
13	C	Christofer Baegert
12	C	Tamaz Mchedlidze
11	W	Jean-Baptiste Dubie
10	FH	Alexandre Douvesy
9	SH	Julien Cabannes
1	P	Pierre Correia
2	H	Thomas Bordes
3	P	Mathieu Giudicelli
4	L	Scott Murray ■
5	L	Vickus Liebenberg
6	F	Yann Brethous
7	F	Sebastian De Chaves
8	N8	Aldric Lescure
16	R	Ephraim Taukafa ■
17	R	Morgan Phelipponneau
18	R	Eric Dos Santos
19	R	Vincent Farre
20	R	Laurent Magnaval
21	R	Thibault Duvallet
22	R	Yohann Durquet
23	R	Sebastien Ormaechea

GLOUCESTER RUGBY



#	POS	NAME
15	FB	Martyn Thomas
14	W	Charlie Sharples
13	C	Tim Molenaar
12	C	Mike Tindall
11	W	Ian Clark
10	FH	Tim Taylor
9	SH	Dave Lewis
1	P	Yann Thomas
2	H	Koree Britton
3	P	Shaun Knight
4	L	Peter Buxton
5	L	Will James
6	F	Matt Cox ■
7	F	Andy Hazell ■
8	N8	Sione Kalamafoni
16	R	Tommaso d'Apice
17	R	Nick Wood
18	R	Dario Chistolini
19	R	Elliot Stooke
20	R	Gareth Evans
21	R	Jimmy Cowan
22	R	Henry Trinder
23	R	Billy Twelvetrees

ACTION Replay

GLOUCESTER RUGBY BORDEAUX BEGLES

25 13



GLOUCESTER RUGBY POINTS SCORERS



TRIES: James (5), Twelvetrees (11),
Sharples (24, 35)
CON: Twelvetrees (36)
PEN: Twelvetrees (34)

BORDEAUX BEGLES POINTS SCORERS



TRY: Gibouin (80)
CON: Lopez (80)
PENS: Sanchez (17, 23)



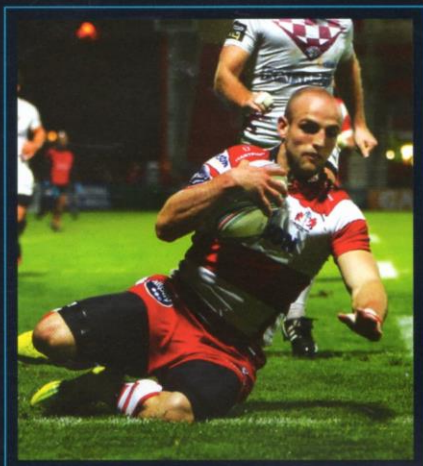
A potent first half performance set Gloucester Rugby on the road to their second Amlin Challenge Cup victory of the season with a 25-13 triumph over Bordeaux-Begles.

Both the win and the try scoring bonus point were effectively in the bag by half time for the Cherry and Whites. However, the second half was a different matter.

Perhaps there was a hint of thinking that the job was already done? Maybe it was just a case of the visitors refusing to throw in the towel and digging deep to keep the scoreline respectable?

Whatever the reasons, the second half was a untidy mixture of handling errors and penalties conceded, with neither team able to gain the upper hand and no further score until the very last play of the game.

18TH OCTOBER 2012, 19:45 KO
KINGSHOLM
AMLIN CHALLENGE CUP: ROUND 2



Charlie Sharples' second try came after Mike Tindall's short pass sent Ben Morgan rampaging from one 22 to the other. Tindall was then in support to link with Huia Edmonds who put Sharples in for a sensational score.

Nigel Davies

Director of Rugby

"We lost our way completely in the second half. I was very disappointed.

"In the first half we showed what we are about and what we can achieve, but we dropped off it.

"But there's been eight games and we've only lost one, so it's a good return."

Bordeaux-Begles actually had the better chances. Two 'tries' were ruled out by the TMO but the men from France finally got some reward with no time left on the clock.

The scene had looked set fair for Gloucester to really kick on in the second half having established a winning platform in the first 40 minutes.

Playing some of their best attacking rugby of the season, Nigel Davies' side scored four excellent tries with a brace coming from England winger Charlie Sharples.

Sharples could easily have had a hat trick by half time but wasn't spotted by Huia Edmonds in the early stages. However, it mattered not in the final outcome.

Will James barged his way over in the corner to open the scoring and Billy Twelvetrees latched on to an intelligent kick through from Jimmy Cowan to add the second.

Sharples' first was created by the superb running lines of James Simpson-Daniel and the second by the strong running and great handling of Mike Tindall, Ben Morgan and Huia Edmonds.

The French side had their moments. Sanchez was a lively figure pulling the strings at fly half, while Thierry Brana had a seemingly good shout for a penalty try turned down.

When they turned it on, however, Gloucester simply had too much pace and power for their opponents and, despite the below par second half performance, the win was never in doubt.

GLOUCESTER RUGBY



#	POS	NAME
15	FB	Martyn Thomas
14	W	Charlie Sharples
13	C	Tim Molenaar
12	C	Mike Tindall
11	W	James Simpson-Daniel
10	FH	Billy Twelvetrees
9	SH	Jimmy Cowan
1	P	Dan Murphy
2	H	Huia Edmonds
3	P	Shaun Knight
4	L	Will James
5	L	Jim Hamilton
6	F	Sione Kalamafoni
7	F	Akapusi Qera
8	N8	Ben Morgan
16	R	Koree Britton
17	R	Nick Wood
18	R	Rupert Harden
19	R	Tom Savage
20	R	Matt Cox
21	R	Dan Robson
22	R	Tim Taylor
23	R	Rob Cook

BORDEAUX BÉGLÉS



#	POS	NAME
15	FB	Darly Domvo
14	W	Avenisi Vasuinubu
13	C	Charles Brousse
12	C	Michel Denetre
11	W	Thierry Brana
10	FH	Nicolas Sanchez
9	SH	Julien Seron
1	P	Franck Labbe
2	H	Fabien Rofes
3	P	Yassine Boutemane
4	L	Karolis Navickas
5	L	Francois Tisseau
6	F	Gautier Gibouin
7	F	Rohan Kitshoff
8	N8	Damien Larrieu
16	R	Stéphane Fort
17		Laurent DelBoulbes
18	R	Jefferson Piroit
19	R	Andrew Chauveau
20	R	Felix Le Bourhis
21	R	Baptiste Serin
22	R	Camille Lopez
23		Hugh Chalmers



Teams correct at time of print 25/10/12

TODAY'S *Line-ups*



GLOUCESTER RUGBY

US

LEICESTER TIGERS



ROB COOK	15	SCOTT HAMILTON
CHARLIE SHARPLES	14	NIALL MORRIS
MIKE TINDALL (C)	13	MANUSAMOA TUILAGI
BILLY TWELVETREES	12	ANTHONY ALLEN
JAMES SIMPSON-DANIEL	11	VERENIKI GONEVA
FREDDIE BURNS	10	TOBY FLOOD
JIMMY COWAN	09	BEN YOUNGS
NICK WOOD	01	LOGOVI'I MULIPOLA
HUIA EDMONDS	02	TOM YOUNGS
RUPERT HARDEN	03	DAN COLE
TOM SAVAGE	04	GRAHAM KITCHENER
WILL JAMES	05	GEOFF PARLING
SIONE KALAMAFONI	06	STEVE MAFI
AKAPUSI QERA	07	THOMAS WALDROM
BEN MORGAN	08	JORDAN CRANE (C)
KOREE BRITTON	16	GEORGE CHUTER
DAN MURPHY	17	MARCOS AYERZA
SHAUN KNIGHT	18	MARTIN CASTROGIOVANNI
PETER BUXTON	19	LOUIS DEACON
MATT COX	20	RICHARD THORPE
DAN ROBSON	21	SAM HARRISON
SHANE MONAHAN	22	GEORGE FORD
MARTYN THOMAS	23	MATT SMITH

THE OFFICIALS

REFEREE: J P Doyle

ASSISTANT REFEREES: Kevin Stewart, Andrew Pearce **TMO:** David Grasshoff

A **QR code** is a specific barcode that is readable by smartphones and links to a specific webpage.

FOR iPhones:

<http://itunes.apple.com/us/app/scan/id411206394?mt=8>



FOR Android:

<https://market.android.com/details?id=com.threegvision.products.inigma.Android>



FOR Blackberry:

<http://appworld.blackberry.com/webstore/content/27049?lang=en>

