



GLOUCESTER RUGBY

ADEY
MagnaClean

Gloucester Rugby main club sponsor

vs Leicester Tigers

Aviva Premiership Rugby Round 05: 04.10.2014

Inside today's matchday programme we have an exclusive interview with dynamic Welsh hooker Richard Hibbard, action replays from the recent matches against Exeter Chiefs and London Welsh and features from our regular contributors Bob Fenton, Ian Randall, The Citizen and the Gloucester Rugby Heritage Project.



official social media partner



gloucesterrugby



@gloucesterrugby

OUR.COM
OFFICIAL TRAVEL COMPANY



AVIVA PREMIERSHIP RUGBY





CAPTAIN'S CORNER BILLY TWELVETREES

GOOD AFTERNOON, WELCOME TO KINGSHOLM TO ALL OF OUR SUPPORTERS, AS WELL AS THE PLAYERS, STAFF AND FOLLOWERS OF THE LEICESTER TIGERS.



IT'S good to be looking ahead to a Saturday afternoon kick off and to be welcoming the Tigers, a club of course that I know very well!

Last time I wrote my captain's column, we were gearing up to meet Exeter Chiefs, but, despite getting off to a fast start and

ending well, we found ourselves on the wrong end of a result that on any other day could've been different.

We dusted ourselves down from that and put our focus into the match last Friday in Oxford and, to be sat here off the back of a five point win is a great feeling. But it also

provided a valuable experience in showing us how much work we still have to put in.

We stuck to our guns in that game, and it was a full squad effort in grinding down Welsh. The graft paid off late on as the lads who came on were able to exploit the gaps, create chances and score tries.

I think we are all in agreement that the strength in depth we are aiming for is getting there - players like Aleki (Lutui) and Mark (Atkinson) came on and stood out. But all of the lads came on and made big impacts, off-the-back of the hard work done ahead of them.

Leicester have a very strong squad and are a very proud club. Today will be a huge test for us and one we are all really looking forward to.

We enter a really testing period of the season now, against two of England, and Europe's, strongest teams in Tigers and Saracens, but the boys are ready and they are relishing the challenge.

Your support, as always will be the extra man today, and give every player in Cherry and White that extra boost.

Enjoy the game.

Billy

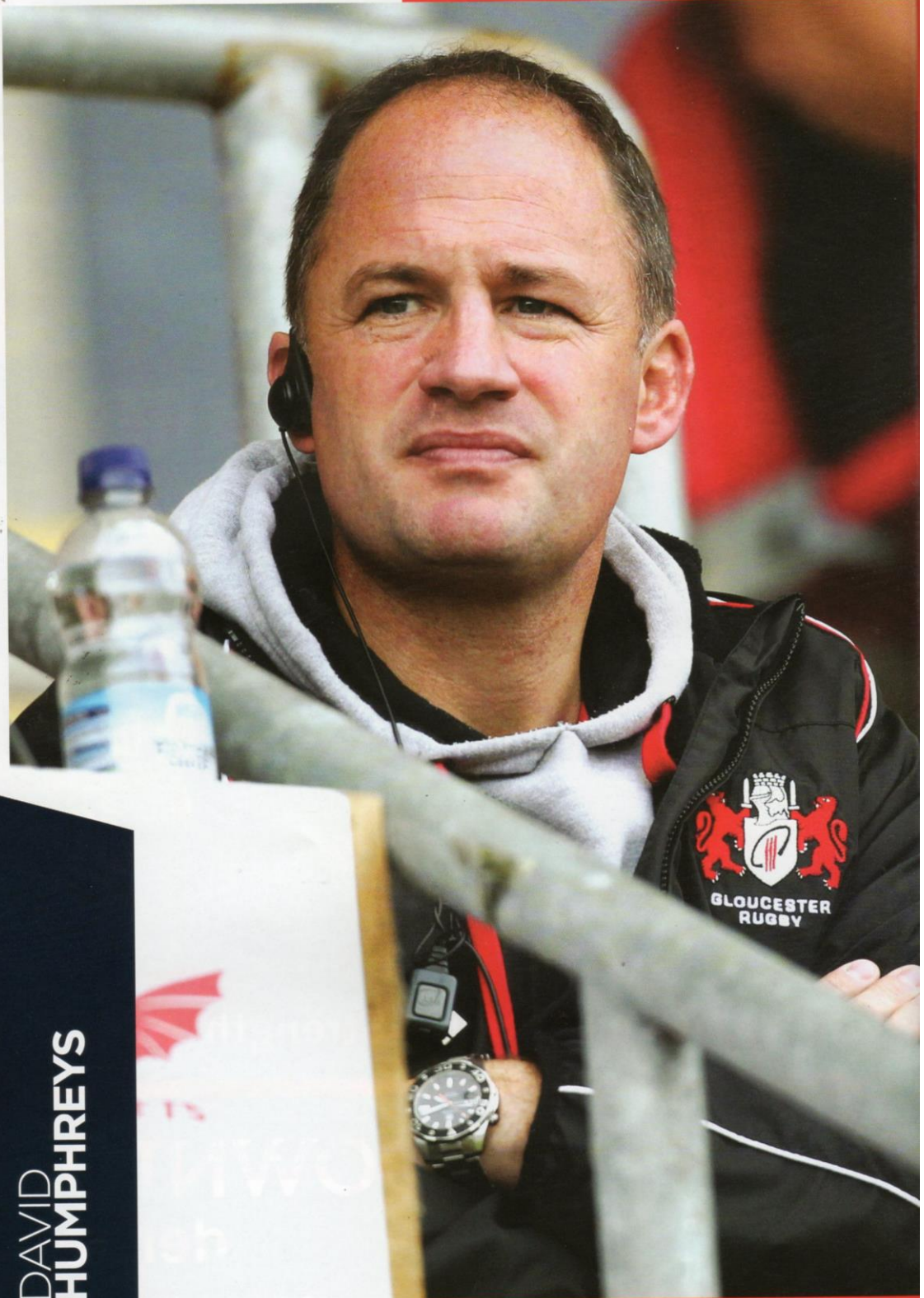
”

THE BOYS ARE READY AND THEY ARE RELISHING THE CHALLENGE.



DIR. OF
RUGBY

DAVID
HUMPHREYS



DAVID
HUMPHREYS

GOOD AFTERNOON AND WELCOME TO KINGSHOLM FOR OUR LATEST AVIVA PREMIERSHIP FIXTURE AND, IN PARTICULAR, I'D LIKE TO EXTEND A VERY WARM WELCOME TO ALL OUR VISITORS FROM THE LEICESTER TIGERS.

LOOKING back over our first four games it has, as expected, been a bit of a roller coaster in terms of performances and results. Last weekend's defeat of London Welsh was emphatic on the scoreboard but there were aspects of the team performance that were disappointing.

One of the challenges we set ourselves each week is to show a progression from the previous week and I felt that Friday evening's performance was the first time that hadn't happened. That's to take nothing away from London Welsh who caused us problems in the first half but again, after a good start we made a number of mistakes that allowed Welsh to get back into the game just before half time.

Having said that, it can be easy to be overly critical and we were delighted to come away from the Kassam Stadium with 5 points and 6 tries



scored. Once again, we finished the game very strongly which is a huge credit to the strength and conditioning work that was done during a tough pre season.

What is for certain is that we'll have to be better in every aspect of the game today against the Tigers. While they had a disrupted start to the season, Leicester are a side who have been at the top of the English, and European, game for a long, long time. Despite their

current injury problems, they have recruited well and have built a squad of players that can again compete at the top end in both Aviva Premiership and European Champions Cup.

When I first arrived at Gloucester in the summer, I was told to look out for two home fixtures in particular. One was the local derby against Bath, and the other was the game against Leicester where the Kingsholm

”

WE KNOW THAT IT'S GOING TO TAKE AN EXTRA SPECIAL EFFORT THIS AFTERNOON. BUT DAYS LIKE TODAY ARE ONE OF THE REASONS THAT MYSELF AND OTHERS WANTED TO COME TO GLOUCESTER.

L



atmosphere increased to another level!

We know that it's going to take an extra special effort this afternoon. But days like today are one of the reasons that myself and others wanted to come to Gloucester.

We're all up for the task in hand and, combined with the superb support that I know we're going to get this afternoon, I hope we'll create another memorable Kingsholm occasion.

David

THE VIEW FROM The Citizen



**SCAN THE
CODE FOR
MORE NEWS
AND STORIES
FROM OUR
WEBSITE**

**PUPILS'
SHOCK** as
suspected
illegal immigrant
dashes from their
coach

**JAMES
NORWOOD
SEALS WIN**
for Forest Green

REVEALED:
The 50 Greatest
Employers in
Gloucestershire

**POLICE
SEEKING**
missing
Elizabeth
Hayward

DEVELOPING EFFECTIVE COMBINATIONS

NICK WALSH is settling into life at Kingsholm and insists there is plenty more to come from Gloucester's new look backs division.

The former England Under-20s mastermind joined the Cherry and Whites' backroom staff in the summer as backs and attack coach.

He inherited an outside division packed with international quality but also new faces following an offseason of upheaval.

Walshe admits it is taking longer than hoped for the star-studded backs to spark into life, but insists it is no time to panic and has vowed it is only a matter of time until they click.

He said, "It's very different to do what I was doing before with the under-20s, there's lots more day to day coaching and preparation for games.

"But I'm really enjoying it, it's a great challenge and I'm enjoying working the boys and management. We're all working to get Gloucester back to where they should be.

"I'm pleased with where we are in terms of a back-line but there's loads more to come from the backs. We are getting better and better in training it's just about transferring that into matches."

For more than an hour of last



Pointing the way

Walshe is enjoying working with Gloucester's exciting back line

week's bonus-point victory over London Welsh it looked as though the Cherry and Whites had taken a step backwards.

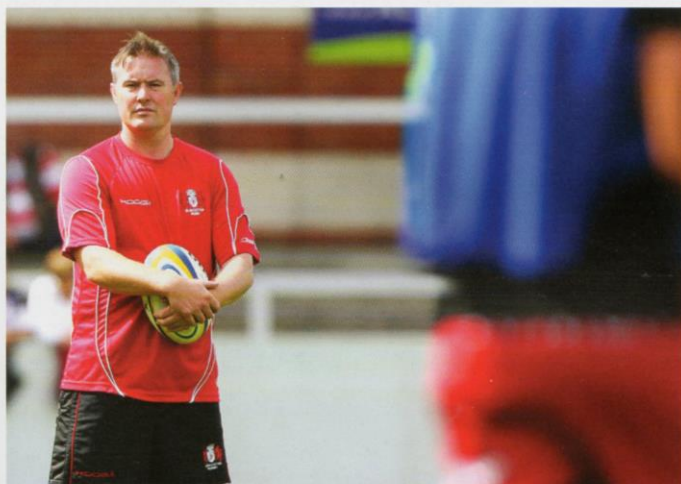
At times they lost all shape and direction but eventually came good and racked up 31 unanswered points in an emphatic final 15 minutes.

But Walshe knows maximum points in the bag is the main thing that matters.

He explained, "Against Welsh we took our chances really well.

”

I'M PLEASED WITH WHERE WE ARE IN TERMS OF A BACK-LINE BUT THERE'S LOADS MORE TO COME FROM THE BACKS. WE ARE GETTING BETTER AND BETTER IN TRAINING IT'S JUST ABOUT TRANSFERRING THAT INTO MATCHES. **Nick Walshe**



We didn't play brilliantly and for 60 minutes it wasn't the best game but at the end we were very sharp and that's pleasing.

"We weren't 100 per cent there in that game and no matter who you are playing it will be tough if that is the case. There have been a few tough words this week.

"We have to be mentally tough and perform better than that. But while there are all these questions we still came away with five points and six tries – at the end of the season I'm sure we will look at that as a good result."

Questions have also been raised over the combinations utilised in the backline.

James Hook and Billy Twelvetrees have so far struggled to strike up a partnership and the Wales international was taken off after 53 minutes against the Exiles, with Twelvetrees slotting in at fly-half.

But Walshe insist Hook's future lies in the number 10 jersey and he is confident effective combinations will develop – even if they are taking a little longer

than hoped.

He confirmed, "We have signed James Hook as a 10 and he is a class player both on and off the field. He works very hard and is the last one off the training pitch – he is working so hard at his game.

"Because James is such a quality player, who can play in a number of positions, he has been chucked around in the past and not really settled in one position.

"But he wants to play 10 and does a lot of good stuff there. He still has a lot to learn and is working very hard with the boys to get us to where we want to be.

"We're trying to get all the partnerships gelling – Greig (Laidlaw) and Dan (Robson) have never played with James, James has never played with Billy and then Trinds (Henry Trinder) got injured so there is another combination with (Henry) Purdy.

"Generally they are gelling well but everyone understands at times we are not performing at our best. We are seeing glimpses of it and that's why I believe there is so much to come but at the moment

we're a little bit inconsistent in everything we do.

"It's crucial in these positions and we realise we're not as slick as we should be but I'm not overly concerned because these players are all class acts. Yes, we would like to be further down the road by now but that's not down to any lack of effort or hard work.

"Everyone is desperate to do well for the clubs and fans and put some pride back in the shirt. We have to put things right against Leicester Tigers."

Leicester will arrive at Kingsholm wounded following a pair of defeats but will boast a familiar face in Freddie Burns.

The fly-half swapped Gloucester for the East Midlands in the summer and while Walshe is well aware of the threat the former Kingsholm favourite poses he has urged his side to pile on the pressure.

He added: "He's a wonderful player and will be looking forward to coming back and playing well in front of the Shed.

"I don't know the ins and outs of what happened last year but he made a decision and went to Leicester. He would not have envisaged being in this position but like us they are two from four.

"But he is playing well and things will develop for him and Leicester. We have to put pressure on Freddie as we would with any fly-half from any team as it's such a pivotal position.

"But we can't focus on individuals, we know it will be a big forward battle and we have to attack, defend and kick well as in any other game."

Citizen AVAILABLE DAILY

GLOUCESTER RUGBY
HERITAGEwww.gloucester rugbyheritage.org.ukTHE MEN AT
THE BACK
- PART TWO

HAVING REMINISCED ABOUT GLOUCESTER FULL-BACKS FROM EARLIER ERAS IN THE LAST PROGRAMME, WE NOW TAKE A LOOK AT THOSE WHO HAVE EXCELLED IN THE POSITION IN THE LAST 50 YEARS.

THE DON

Don Rutherford had already won five England caps by the time he arrived at Kingsholm in 1964, but still had to start in the United XV. He had previously played for Percy Park, RAF, Wasps and St. Luke's College, but came to Gloucester because of his interest in the daughter of the docks manager at Sharpness (now his wife, Sue).

After playing in front of a man and a dog (and he says the dog didn't always turn up!) in the north-east, he found the passion and the size of the crowds at Kingsholm just wonderful.



Don Rutherford

Don was an early exponent of the attacking full-back, and, as club captain in 1967-68, introduced fresh ideas to complement the traditional Gloucester emphasis on forward power.

That was not an easy task with some of the established players, but Don himself led the way with 202 points from 32 games that season. Whilst with Gloucester he gained a further nine England caps and played once for the British Lions in 1966.

He also captained Gloucestershire for the 1965-66 season. After his playing days were over Don served as Technical Director of the Rugby Union from 1969 until his retirement in 1999.

221 games for Gloucester scored 1559 points. His best season was 1971-72, when he scored 388 points, including 102 penalties. Gloucester won the Knockout Cup, and Eric played a big part in that campaign, contributing 38 of the 68 points scored.

In the following season Eric was finally displaced by Peter Butler. He went on to captain Gloucester United and to serve the Club in various capacities right up to the present day as President.



Eric Stephens

ERIC STEPHENS

An Old Cryptian, Eric first played for Gloucester in the 1961-62 season, turning out at centre, fly half and even in the back row, for his first two terms. He re-emerged in 1966 as a full-back.

He was a prolific kicker, who in

PETER BUTLER

Pete "The Boot" Butler, a graduate of Birmingham University, was an even more prolific goal kicker than Eric Stephens, indeed he has scored more points than any other Gloucester player.

This is a record which is never



Peter Butler

likely to be beaten, considering the fact that far fewer games are played these days and players' careers are far shorter. In his 318 games Pete scored a staggering 3006 points.

His most prolific season was 1973-74 when in 45 games he scored 488 points. He was in the team that won the John Player Cup Final against Leicester in 1978, kicking the conversion of Richard Mogg's try.

Many thought that Pete should have won more caps than the two he was awarded in 1976. However, he did enjoy great success with Gloucestershire. In 54 games between 1972 and 1981 he scored 564 points.

In the winning Championship final against Middlesex at Richmond in 1976 (under the captaincy of John Bayliss) he scored all the 24 points, scoring a try, conversion and six penalties.

In all he played in seven County Championship finals, and was on the winning side three times (1974-75-76).

TIM SMITH

Tim made his first appearance in the 1982-83 season, and in his full debut scored five penalties against Abertillery. He was fully established at full-back by the following season. In all he made



Tim Smith

347 appearances and scored 2681 points.

Tim was a full back who loved to attack and scored 90 tries in his career. His defence was also sound. He saw the start of the league system and played 94 games in it, scoring 588 points.

CHRIS CATLING

In 1996-97, as the professional era dawned, Chris "Crazy Legs" Catling became Gloucester's regular choice at the back. He had already played for England at 18 group level, and Exeter University.

A great Shed favourite, he was another ultra-attacking player, scoring 35 tries in his 156 appearances for the club. Unusually for a full-back, he rarely kicked the ball, which was seen by some as his only weakness. He did, however, kick one drop goal in his career, and that was at Bristol in his first season.



Chris Catling

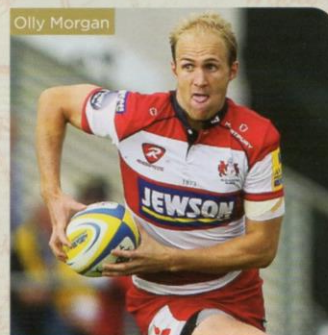
OLLY MORGAN

Olly arrived at Kingsholm via Gloucester Old Boys and Bracknell. He had made one appearance off the bench towards the end of the 2004-05 season, but in the following game against Sale he announced his arrival with a try.

Olly was another very attacking full back, who was fearless under a high ball. Having plucked them from the air, he would often run them back, hoist another kick and follow up to catch the ball again at full pace, thus causing havoc in the opposition defence. It could be argued that, in a similar way to Jonny Wilkinson, he was too brave for his own good, for he regularly picked up injuries.

Olly played twice for England in 2007, and was taking to international rugby like a duck to water, but in his second game against Ireland, he was injured and did not play again that season.

In the following season he had made a good start, but dislocated his shoulder against Bourgoin in the Heineken Cup in December and did not play again until the end of March. It seemed that every time he was on the brink of getting back into the England side, he would pick up another injury.



Olly Morgan

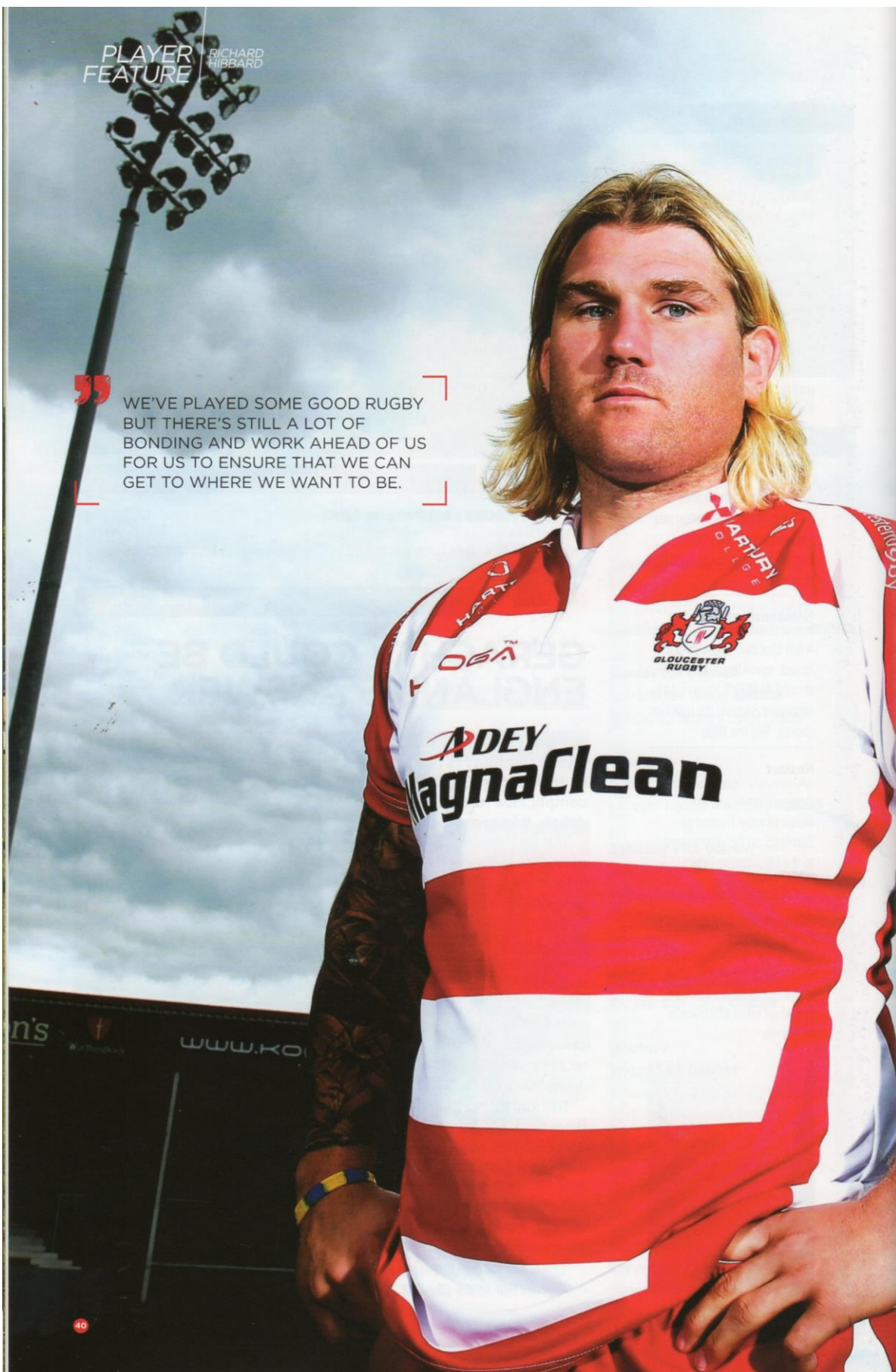
Finally on 7th January 2012, playing against Worcester, Olly picked up a bad knee injury, which eventually led to the end of his career. He played in 131 games for Gloucester. It should have been so many more.

PLAYER
FEATURE

RICHARD
HIBBARD

”

WE'VE PLAYED SOME GOOD RUGBY
BUT THERE'S STILL A LOT OF
BONDING AND WORK AHEAD OF US
FOR US TO ENSURE THAT WE CAN
GET TO WHERE WE WANT TO BE.



DID YOU KNOW? | HIBBARD WON CAPS IN ALL THREE LIONS TESTS IN AUSTRALIA IN 2013 AND STARTED THE THIRD AND DECISIVE MATCH

GLOS-THOR

HIS HARD-HITTING, ALL-ACTION WORK IN THE RED SHIRTS OF THE BRITISH & IRISH LIONS AND WALES IS ETCHED IN THE MIND OF BRITISH RUGBY FANS, AND NOW HOOKER RICHARD HIBBARD IS FOCUSED ON CREATING MEMORIES IN CHERRY AND WHITE.

AFTER four starts in the Aviva Premiership, Hibbard is enjoying the hard work he set out to put in, and the challenges are huge, but ones which he is relishing.

"It's been tough, really tough. I've found that every game has been competitive and there are no easy games. Each team is fighting for the win every single week.

"It was good to get started at Kingsholm, I don't think that we've had any illusions of where we are at as a forward pack, especially after the pushover try against Munster. It was good to have, but I don't think it put us anywhere that we thought we should be.

"We've just got to keep building from that, and it is an area that we want to improve and excel at and really become dominant.

"We've had a few results that were good but some results got away from us which we are not too happy about. We've played some good rugby but there's still a lot of bonding and work ahead of us for us to ensure that we can get to where we want to be."

With all eyes focused on the pitch during the Round Two victory over Sale Sharks, many

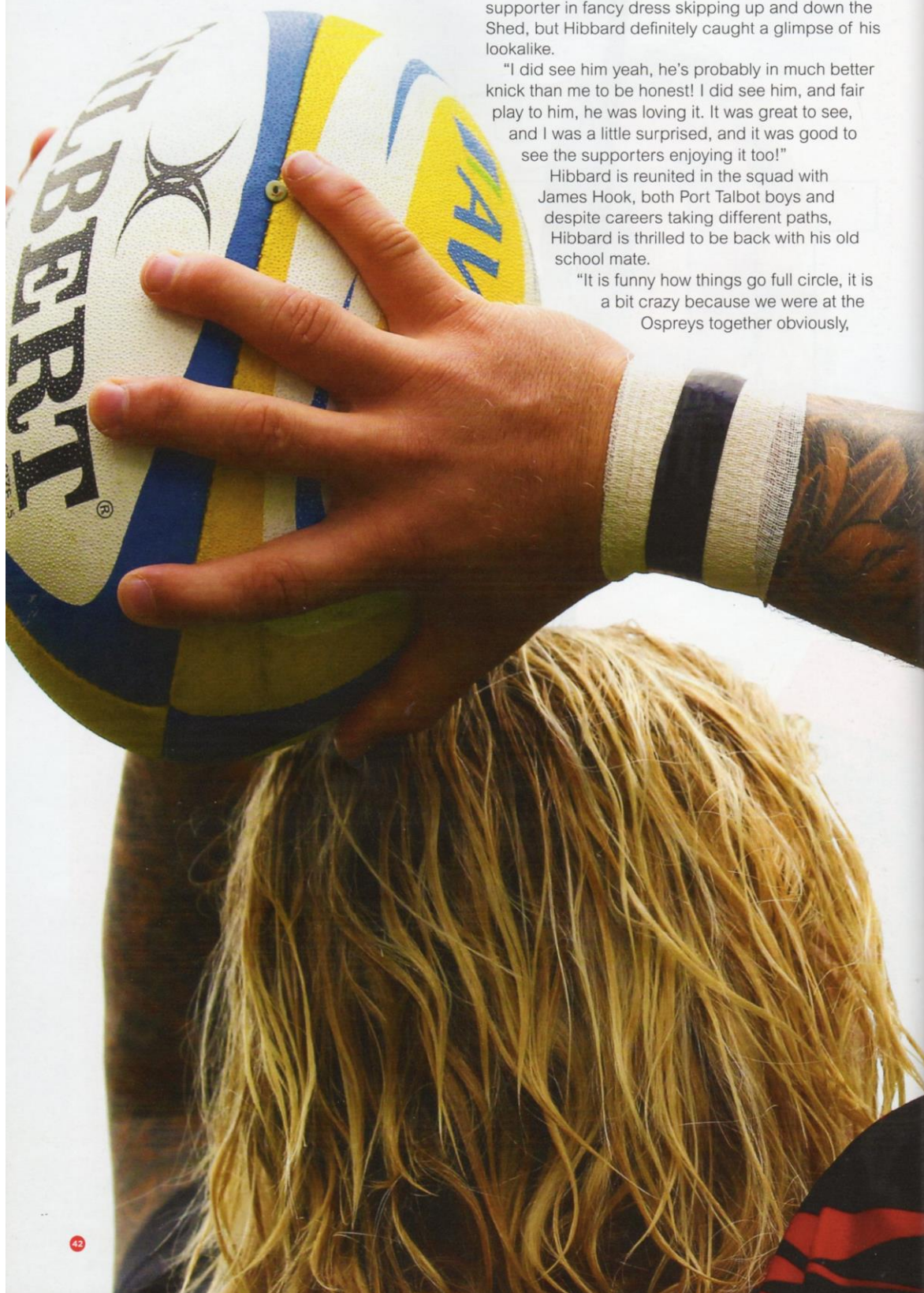


supporters could be forgiven for missing the supporter in fancy dress skipping up and down the Shed, but Hibbard definitely caught a glimpse of his lookalike.

"I did see him yeah, he's probably in much better knick than me to be honest! I did see him, and fair play to him, he was loving it. It was great to see, and I was a little surprised, and it was good to see the supporters enjoying it too!"

Hibbard is reunited in the squad with James Hook, both Port Talbot boys and despite careers taking different paths, Hibbard is thrilled to be back with his old school mate.

"It is funny how things go full circle, it is a bit crazy because we were at the Ospreys together obviously,



DID YOU KNOW?

HIBBARD USED TO PLAY RUGBY LEAGUE FOR ABERAVON FIGHTING IRISH

until James left to go to France and then I stayed with the Ospreys, and somehow we've both ended up here.

"It's great to be playing with James, he's a quality player and a good mate too."

Autumn Internationals are on the horizon for the 36-time capped Welshman, but the focus is fully on matters in Gloucestershire, with some big games ahead.

But with 2015 being a huge pinnacle on the International calendar, the man who has picked up a unique duo with a Grand Slam and Lions' tour victory is proud of both achievements equally.

"To be honest, I don't really think of the Internationals at the moment, I just want to get the job done and work with Gloucester and get some more results. If the internationals click on then happy days!

"It's a difficult one to pick really, with a Grand Slam and the Lions, but if I'm honest I couldn't really choose, they were both rather special!"



I DID SEE HIM, AND FAIR PLAY TO HIM, HE WAS LOVING IT. IT WAS GREAT TO SEE, AND I WAS A LITTLE SURPRISED, AND IT WAS GOOD TO SEE THE SUPPORTERS ENJOYING IT TOO!

GLoucester RUGBY AUTOGRAPH COLLECTION



IAN RANDALL'S RUGBY TALK

TO YOU AND I, A DRESSING IS GENERALLY SOMETHING YOU PUT ON A SALAD, BUT THE CONCEPT OF "DRESSING" GLOUCESTER FOR THE RUGBY WORLD CUP IS A VERY REAL CHALLENGE FOR A PLAYER WHO PROUDLY REPRESENTED BOTH OF THIS AFTERNOON'S TEAMS.

A DAM BALDING played for Tigers before coming to Kingsholm, but he's now halfway through his role as RWC co-ordinator at the City Council.

Tickets for the tournament are on sale, it's less than a year until the first match, and banners with the "Too Big to Miss" slogan are up in all the host cities.

"Having a slogan means the same message is being given to everyone" he told me. Will the Rugby World Cup come to Gloucester again? I've no idea but cast your mind back

”

THERE ARE SO MANY FOLK WILLING TO DO THINGS FOR FREE, IT RE-CONFIRMS YOUR FAITH IN PEOPLE, WITHOUT THEM THE RUGBY WORLD CUP WOULD BE VERY DIFFICULT TO STAGE. Adam Balding

to the Olympics - people went to watch events they had never taken an interest in before. The tournament is coming to England, so even if you're not

a sports fan, get involved and experience it.

"The last year for me has been good, even if it's been at 100mph. Most host cities have a bigger team of people. In terms of numbers here we are quite small, but the support network is second to none and we get a lot of help from England Rugby. The steering group meet quarterly and there is a project group that meet once a month.

"Dressing the city was a big obstacle because we'd never had the infrastructure to put up lighting column banners

as well as bridge banners before. We've used a specialist company and I think the impact so far as been great."

A year ago Balding might

have been playing in France - he had an offer to go there - but instead threw himself into a very different role.

Within weeks he was giving presentations at Business Breakfast meetings to 200 people, and recently has been hands on interviewing the hundreds of potential volunteers who put themselves up to help locally during the tournament.

"There are so many folk willing to do things for free, it



re-confirms your faith in people," Balding admitted. "Without them the Rugby World Cup would be very difficult to stage.

"The base we're looking for is



23/09/2015 KO 14:30

**SCOTLAND
vs JAPAN**

11/10/2105 KO 20:00

**USA
vs JAPAN**

19/09/2105 KO 12:00

**TONGA
vs GEORGIA**

25/09/2015 KO 16:45

**ARGENTINA
vs GEORGIA**

about 60 people, so a lot will be disappointed. But we will look for other openings in the city for those that have shown an interest. From a council point of view it's a chance to increase our bank of volunteers."

Not surprisingly too, Balding wants to involve the recently retired Gloucester players who are in still in the area in some way which will be a real coup for us as a host city.

At this stage some key local details are not yet finalised.. There will be a Fanzone - probably in the Gloucester Docks - and when the Rugby World Cup trophy starts a journey around the country 100 days out from the tournament, it will spend two days here in Gloucester.

Kingsholm will stage four matches, three close together and then a gap before the final fixture between USA and Japan, It's a diary Balding believes will drive interest as well as putting expectation on the last game.

More immediately, there's an occasion to relish here today, albeit on the basis of the season so far we shouldn't expect too much.

There will have been an element of relief as Gloucester's final twenty minutes at London Welsh finally



“THE TOURNAMENT IS COMING TO ENGLAND, SO EVEN IF YOU'RE NOT A SPORTS FAN, GET INVOLVED AND EXPERIENCE IT.

Adam Balding

produced a bonus point win, while at Welford Road, Leicester - still with a long injury list and having been battered by Bath the week before - were edged out in a close game by London Irish. Adam Balding doesn't see there being much in it.

"Leicester was the toughest environment I was involved in as a player," he said.

"They'll be looking to right a few wrongs and the fans and Richard Cockerill in particular will be expecting a reaction to what has happened.

"People may have been surprised by Tigers making

four signings from Italy over the summer but they always look for players to compliment what they already have. Barbieri is physical and very direct in the back row and hooker Ghiraldini is a good scrummager.

"Gloucester's signings this year have been really good too. I think they will have a strong season and, with a new Director of Rugby they are still coming together as a squad."

Let battle - with Freddie Burns returning to Kingsholm for the first time since his departure in the summer - commence...

ACTION REPLAY

VS
EXETER
CHIEFS

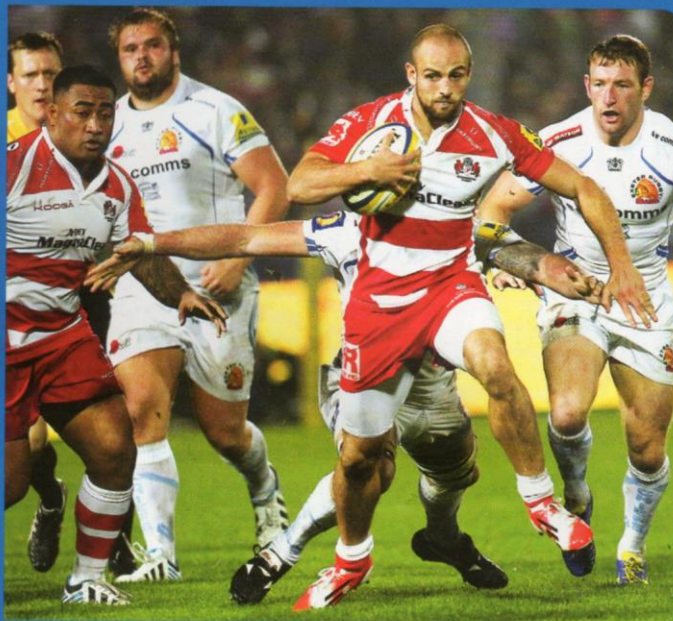
GLOUCESTER RUGBY

LINE-UP

- 15 FB ROB COOK
- 14 W CHARLIE SHARPLES
- 13 C HENRY PURDY
- 12 C BILLY TWELVETREES (C)
- 11 W JONNY MAY
- 10 FH JAMES HOOK
- 9 SH GREIG LAIDLAW
- 1 P DAN MURPHY
- 2 H RICHARD HIBBARD
- 3 P SILA PUAFISI
- 4 L TOM SAVAGE
- 5 L TOM PALMER
- 6 F SIONE KALAMAFONI
- 7 F ROSS MORIARTY
- 8 NB BEN MORGAN

REPLACEMENTS

- 16 H ALEKI LUTUI
- 17 P YANN THOMAS
- 18 P JOHN AFOA
- 19 L ELLIOTT STOOKE
- 20 F MATT KVESIC
- 21 SH DAN ROBSON
- 22 C MARK ATKINSON
- 23 FB BILL MEAKES



GLOUCESTER RUGBY

22

TRIES: May (8), Murphy (10), Kalamafoni (62) **PEN:** Hook (71) **CONS:** Laidlaw (11), Hook (63)



EXETER CHIEFS

25

TRY: White (32) **PENS:** Steenson (2, 14, 18, 23), Slade (36, 47) **CON:** Steenson (33)



EXETER CHIEFS

LINE-UP

- 15 FB CHRYSANDER BOTHA
- 14 W IAN WHITTEN
- 13 C HENRY SLADE
- 12 C SAM HILL
- 11 W MATT JESS
- 10 FH GARETH STEENSON
- 9 SH HAYDN THOMAS
- 1 P BEN MOON
- 2 H JACK YEANDLE (C)
- 3 P TOMAS FRANCIS
- 4 L MITCH LEES
- 5 L DAMIAN WELCH
- 6 F DAVE EWERS
- 7 F BEN WHITE
- 8 NB THOMAS WALDROM

REPLACEMENTS

- 16 H ELVIS TAIONE
- 17 P CARL RIMMER
- 18 P MORAY LOW
- 19 L RYAN CALDWELL
- 20 F KAI HORSTMANN
- 21 SH WILL CHUDLEY
- 22 FB PHIL DOLLMAN
- 23 W JACK NOWELL

JUST EDGED OUT BY CHIEFS IN NAIL-BITER AT KINGSHOLM

FRIDAY NIGHT LIGHTS WERE SWITCHED ON FOR THE FIRST TIME THIS CAMPAIGN, BUT THE CHERRY AND WHITES' INDISCIPLINE IN THE MIDDLE OF THIS FASCINATING ENCOUNTER COST THEM DEARLY, AS A SECOND HALF FIGHTBACK FELL JUST SHORT AGAINST THE ORGANISED CHIEFS.

A BARNSTORMING start, a strong finish, either side of a period of dominance from the men from Sandy Park, but Cherry and Whites ultimately fell foul of the right foot of Gareth Steenson and the left foot of his partner-in-crime Henry Slade.

Steenson opened the

as the visitors wrestled their way to control at the set-piece.

Slade then kicked from wide to regain the lead and then, after good continuity, Ben White barged his way over from close range. A shell-shocked Kingsholm crowd stared into their half-time beverages, hoping another rousing team-talk would stir another comeback.

”

I DON'T THINK ANYBODY, AFTER THE LAST COUPLE OF WEEKS, CAN QUESTION THE COMMITMENT OR CHARACTER OR WORK RATE, BUT WE JUST NEED A LITTLE BIT OF ACCURACY. **David Humphreys**

scoring, then Ian Whitten was softly sinbinned for a mid-air collision with Charlie Sharples. The hosts took advantage, and in some style.

Jonny May spotted the loitering Damian Welch out wide, and after showing the lock a clean pair of jet heels, chipped over the cover and just had enough pace to outstrip the cover to touch down.

Very shortly afterwards, a Slade error handed the hosts a five-metre lineout and the forwards initiated a hugely impressive drive, with Dan Murphy dotting down. Greig Laidlaw converted.

Back to their full compliment of fifteen, Chiefs set about chipping away at the lead through three Steenson penalties

It was delayed in its arrival, Matt Kvesic came on, but was sinbinned minutes later, allowing Slade to add another penalty from 54 metres. The hosts huffed and puffed, but points were not forthcoming.

It wasn't looking like Gloucester's night, despite looking bright in attack – the Chiefs for their part were content to play the game in Gloucester's half and challenge their hosts to come at them.

The rolling maul did still look a potent weapon for the hosts, however. Sione Kalamafoni barged his way over and Gloucester sensed a comeback, especially when James Hook added a penalty – owing much to a trademark Kvesic jackal.

John Afoa's introduction

ADEY
MagnaClean
CHAMPAGNE MOMENT



The individual skill from Jonny May to open the try-scoring was eye-catching. Tom Savage's delayed pass set the winger away, and his chip ahead at full tilt was perfect allowing his natural pace to sprint away and dot down.

yielded a huge shift in momentum, Gloucester were dominant in the scrum, but perhaps the turnaround arrived too late, with time running out.

Jonny May was threatening and Kingsholm was alive with noise, but the clock was ever ticking and the hosts had left themselves just too much to do, with just a losing bonus point their ultimate reward.

After outscoring their opponents three tries to one, the Cherry and Whites will rue their indiscipline, which allowed the impressive Slade and Steenson to punish them.

The second half passion and spirit shows the new found drive in the squad, and the signs are definitely evident of positive play in 2014/15.

ACTION REPLAY

VS
LONDON
WELSH

LONDON WELSH

LINE-UP

15	FB	SEB JEWELL
14	W	RHYS CRANE
13	C	NIC REYNOLDS
12	C	TOM MAY (C)
11	W	NICK SCOTT
10	FH	OLLY BARKLEY
9	SH	PIRI WEEPU
1	P	RICKY REEVES
2	H	KOREE BRITTON
3	P	TAIONE VEA
4	L	DEAN SCHOFIELD
5	L	JAMES DOWN
6	F	LACHLAN McCAFFREY
7	F	RICHARD THORPE
8	N8	OLLIE STEDMAN

REPLACEMENTS

16	H	NATHAN MORRIS
17	P	SHANE CAHILL
18	P	JACK GILDING
19	L	MATT CORKER
20	F	BEN PIENAAR
21	SH	ROB LEWIS
22	FH	TRISTAN ROBERTS
23	C	JAMES LEWIS



LONDON WELSH

10

TRY: Pienaar (34) **PEN:** Barkley (40) **CON:** Barkley (35)



GLOUCESTER RUGBY

46

TRIES: Purdy (24), Sharples (27), Atkinson (68, 71), May (73), Penalty try (80) **PENS:** Twelvetrees (53), Laidlaw (64)
CONS: Hook (28), Laidlaw (69, 72, 74, 80)



GLOUCESTER RUGBY

LINE-UP

15	FB	ROB COOK
14	W	CHARLIE SHARPLES
13	C	HENRY PURDY
12	C	BILLY TWELVETREES (C)
11	W	JONNY MAY
10	FH	JAMES HOOK
9	SH	DAN ROBSON
1	P	DAN MURPHY
2	H	RICHARD HIBBARD
3	P	JOHN AFOA
4	L	ELLIOTT STOOKE
5	L	TOM PALMER
6	F	SIONE KALAMAFONI
7	F	MATT KVESIC
8	N8	BEN MORGAN

REPLACEMENTS

16	H	ALEKI LUTUI
17	P	YANN THOMAS
18	P	SILA PUAFISI
19	L	JAMES HUDSON
20	N8	ROSS MORIARTY
21	SH	GREIG LAIDLAW
22	FH	MARK ATKINSON
23	C	TOM ISAACS

GLOUCESTER TAKE THE POINTS AT THE KASSAM

FIVE POINTS ON THE ROAD FOLLOWING A 46-10 VICTORY, IS NOT NORMALLY SOMETHING TO BE SNIFFED AT. HOWEVER, GLOUCESTER LEFT THE KASSAM STADIUM KNOWING THAT THERE IS STILL MUCH MORE TO COME FROM THEM.

FOR more than an hour, the hosts, who had lost all three of their Aviva Premiership outings coming into last Friday's game, fought doggedly and frustrated a Gloucester outfit who couldn't quite get their game going.

However, the game turned on a yellow card for the Exiles tight-head prop Vaione Ve'a, and

the off. However, committed defence and some narrowly off target goal-kicking kept the encounter scoreless in the first quarter.

It took two moments of vision from Dan Robson to break the deadlock. A quick tap penalty in his own 22 eventually led to Henry Purdy's first Premiership try, before his sharp break and inside

”

I'M DELIGHTED WITH THE FIVE POINTS AND THAT LITTLE BIT OF MAGIC FROM JONNY MAY PROVIDED THE SPARK TO CAUSE THEM PROBLEMS.

David Humphreys

Gloucester ran in four tries in the last 15 minutes to cruise to victory.

The Cherry and Whites, clad in their unfamiliar black change kit, strove manfully to impose themselves upon the game from

pass to Charlie Sharples saw the winger sprint home.

Frustratingly, having worked so hard to open up a 12-0 lead, Gloucester saw Welsh immediately battle their way back into the game.

A powerful catch and drive resulted in a try for Ben Pienaar, and the streetwise Piri Weepu milked a penalty, which former Gloucester player Olly Barkley slotted to make the half time score 12-10.

Gloucester needed to take the game by the scruff of the neck in the second half, which they duly did. However, the outcome wasn't finally determined until referee Luke Pearce lost patience with the Welsh front row's indiscretions.

A man to the good, Gloucester exploited the superiority in

ADEY
MagnaClean
CHAMPAGNE MOMENT



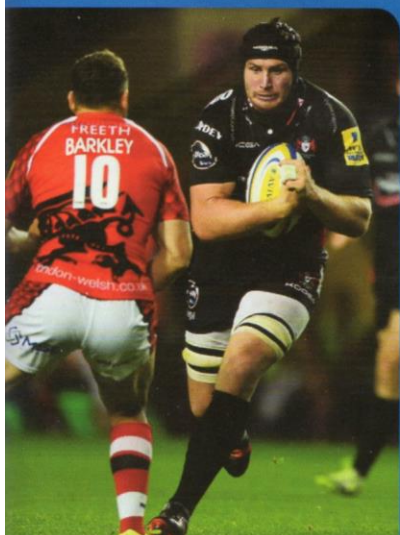
Jonny May deserves a mention, but Mark Atkinson's second try was a beauty. One half dummy helped him bamboozle the Welsh defensive line, before another dummy to Matt Kvesic kept the defence in two minds and the centre powered home for a 50 metre try.

numbers. Mark Atkinson hit a great line off Billy Twelvetrees to score the first after a searing break from Jonny May.

The replacement centre then scored a superb solo second, before May latched on to a beautifully weighted chip over the defence from Greig Laidlaw for the fifth.

The final try was down to the pack, the home side eventually being ground down by the efforts of Gloucester's forwards and the job was done.

A solid enough win, but Gloucester know that they are capable of playing at a higher level than this and will need to do so against today's opponents, Leicester Tigers.





TODAY'S TEAMS

GLOUCESTER RUGBY vs LEICESTER TIGERS

REFEREE: Andrew Small ASSISTANTS: Roger Baileff and Ashley Rowden

TEAMS CORRECT AT TIME OF PRINT

TPCD
□□□□

□□□□

□□□□

□□□□

□□□□

□□□□

□□□□

□□□□

□□□□

□□□□

□□□□

□□□□

□□□□

□□□□

□□□□

□□□□

□□□□

□□□□

□□□□

□□□□

□□□□

□□□□

□□□□

□□□□

□□□□

ROB **COOK**
FULL-BACK

CHARLIE **SHARPLES**
RIGHT WING

HENRY **PURDY**
OUTSIDE CENTRE

BILLY **TWELVETREES** (C)
INSIDE CENTRE

JONNY **MAY**
LEFT WING

JAMES **HOOK**
FLY-HALF

GREIG **LAIDLAW**
SCRUM-HALF

NICK **WOOD**
LOOSEHEAD PROP

RICHARD **HIBBARD**
HOOKER

JOHN **AFOA**
TIGHTHEAD PROP

TOM **SAVAGE**
LOCK

TOM **PALMER**
LOCK

SIONE **KALAMAFONI**
BLINDSIDE FLANKER

MATT **KVESIC**
OPENSIDE FLANKER

BEN **MORGAN**
NUMBER EIGHT

ALEKI **LUTUI**
REPLACEMENT 1

YANN **THOMAS**
REPLACEMENT 2

SILA **PUAFISI**
REPLACEMENT 3

JAMES **HUDSON**
REPLACEMENT 4

ROSS **MORIARTY**
REPLACEMENT 5

DAN **ROBSON**
REPLACEMENT 6

MARK **ATKINSON**
REPLACEMENT 7

TOM **ISAACS**
REPLACEMENT 8

15

14

13

12

11

10

9

1

2

3

4

5

6

7

8

16

17

18

19

20

21

22

23

MATHEW **TAIT**
FULL-BACK

BLAINE **SCULLY**
RIGHT WING

VERENIKI **GONEVA**
OUTSIDE CENTRE

OWEN **WILLIAMS**
INSIDE CENTRE

MILES **BENJAMIN**
LEFT WING

FREDDIE **BURNS**
FLY-HALF

BEN **YOUNGS** (C)
SCRUM-HALF

TOM **BRISTOW**
LOOSEHEAD PROP

LEONARDO **GHIRALDINI**
HOOKER

FRASER **BALMAIN**
TIGHTHEAD PROP

SEBASTIAN **DE CHAVES**
LOCK

GRAHAM **KITCHENER**
LOCK

JAMIE **GIBSON**
BLINDSIDE FLANKER

JULIAN **SALVI**
OPENSIDE FLANKER

JORDAN **CRANE**
NUMBER EIGHT

NEIL **BRIGGS**
REPLACEMENT 1

RICCARDO **BRUGNARA**
REPLACEMENT 2

TIZIANO **PASQUALI**
REPLACEMENT 3

HARRY **WELLS**
REPLACEMENT 4

LAURENCE **PEARCE**
REPLACEMENT 5

ROBERT **BARBIERI**
REPLACEMENT 6

SAM **HARRISON**
REPLACEMENT 7

MATT **SMITH**
REPLACEMENT 8

TPCD
□□□□

□□□□

□□□□

□□□□

□□□□

□□□□

□□□□

□□□□

□□□□

□□□□

□□□□

□□□□

□□□□

□□□□

□□□□

□□□□

□□□□

□□□□

□□□□

□□□□

□□□□

□□□□

□□□□

□□□□

□□□□