

MEN'S AND BOYS' RAINCOATS † Unequalled Value.

Largest Stock † MEN'S AND BOYS' OVERCOATS

Prices 18/11, 21/=-, 25/=-, 30/=-

MOORE BROS. *W*

*W* EASTGATE STREET, GLOUCESTER.

MILWARD AND SONS, LTD.

5, Westgate Street, Gloucester.

**K**

BOOTS FOR FIELD & FARM.  
Everybody's "K,"

14/9 & 15/9

OFFICIAL PROGRAMME.

PRICE ONE PENNY.

GLOUCESTERSHIRE VERSUS  
SOUTH AFRICANS

AT KINGSHOLM,

Saturday, November 3rd, 1906.

*Chance & Bland, Gloucester.*

AFTER THE MATCH DON'T FAIL TO VISIT  
**THE PALACE OF VARIETIES,** Near the Cross,  
GLOUCESTER.

THE BEST VARIETY TALENT IN THE WORLD!!!

See DAVIS & GLEDHILL TRIO on the Racing Cycle Rollers;  
LES TROIS ETENAS, Globe Performers; CRAIG, ROZE & CRAIG.

13 STAR TURNS!

13 STAR TURNS!

Prices: 3d. to 1/6.

Matinee Today at 2-30.

TWICE NIGHTLY, AT 6-50 & 9-0. † † Late Trains to all Parts.

Next Week, THE ROYAL TOKIO TROUPE, and Unexcelled Company.

JOHN A. FISHER & SON,

RESTAURANT AND TEA ROOMS,

WESTGATE STREET, GLOUCESTER.

High-class Confectioners and Caterers.



## DO YOU NEED

A CLOCK, WATCH, RING,  
WATCH CHAIN, CRUET,  
KNIVES, SPOONS or FORKS,  
AN ALARM CLOCK, or  
anything in the JEWELLERY line

*Come to me and I will give you*

THE BEST OF GOODS AND PRICES

**G. A. BAKER, F.S.M.C.**

*(Certificated Optician by Examination),*

95, Southgate Street, GLO'STER.

**UNBEATABLE** (Like the  
"SPRINGBOKS")

THE FAMOUS

**GLO'STER GUINEA SUITS,**

# 21s.

To Measure. Fit Guaranteed.

**W. F. SAUNDERS,**

128, Westgate St., GLOUCESTER

### SOUTH AFRICANS.

**BACK—**

2 **A. F. Marsberg**

**THREE-QUARTERS—**

7 **J. Le Roux** (left wing)

10 **J. G. Hirsch** (left centre)

3 **J. Krige** (right centre)

6 **J. A. Loubser** (right wing)

**HALF-BACKS—**

11 **H. Carolin**

12 **F. J. Dobbin**

**FORWARDS—**

16 **W. A. Burger**

19 **H. Daneel**

22 **W. C. Martheze**

24 **W. S. Morkel**

26 **H. Reid**

14 **D. Mare**

28 **W. Burdett**

21 **D. Brink**

### GLOUCESTERSHIRE.

**BACK—**

1 **A. Wood** (Gloucester)

**THREE-QUARTERS—**

2 **A. Hudson** (Gloucester)

3 **W. Hyam** (Devon Albion)

4 **M. Neale** (Bristol)

5 **C. Smith** (Gloucester)

**HALF-BACKS—**

6 **F. Niblett** (Cinderford)

7 **J. Stephens** (Gloucester)

**FORWARDS—**

8 **J. L. Mathias** (Bristol), Capt.

9 **T. J. Richards** (Bristol)

10 **J. D. Bedell-Sivright**

(Cheltenham)

11 **W. Bale** (Bristol)

12 **J. Watkins** (Cinderford)

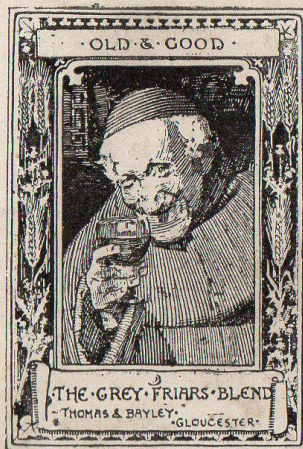
13 **G. Matthews** (Gloucester)

14 **T. Webb** (Bristol)

15 **W. Holder** (Gloucester)

*Referee: Mr. F. J. MARSH (South Shields).*

*Touch Judges: Messrs. P. Le Roux (South Africans), C. E. Brown (Gloucestershire).*



Highly  
approved  
by County  
Analyst.

40/- per doz.  
3/6 per bot.

*Special  
Quotations  
to the Trade.*

THOMAS &  
BAYLEY,  
Greyfriars,  
Gloucester.

### THE SMOKERS' STORES.

**MINSON & CO.,**

**Cross Cigar Stores,**

**Eastgate, GLOUCESTER.**

Large Stocks of Cigars, Tobaccos,  
Cigarettes, &c.

Smokers' Requirements. Popular Prices.

*Your Patronage Solicited.*



“ THE SPRINGBOKS,” 1906=7.



BACK ROW :—A. F. Marsburg, A. Stegmann, J. Krige, D. Morkel, H. Reid, J. Raaf, D. Brink, H. Daneel, D. Brookes, S. Morkel, D. Mare.  
SECOND ROW :—H. Carolin, W. A. Burger, W. C. Martheze, J. C. Carden (Manager), Paul Roos (Captain), P. Le Roux, J. A. Loubser, H. A. de Villiers.  
BOTTOM ROW :—F. J. Dobbin, Andrew Morkel, S. de Melker, W. Millar, J. Le Roux, A. R. Burmeister, D. C. Jackson, J. G. Hirsch.

Copyright—Halftones Ltd.

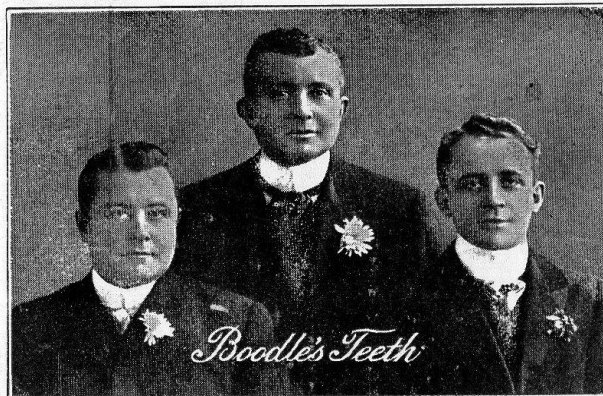
Printed by Chance & Bland, Gloucester.

# BOODLE'S TEETH.

(D. GORE BOODLE & Co., Ltd.)

ANNANDALE HOUSE, GLOUCESTER.

Largest Firm of Extractors and Adaptors  
of Teeth in the West of England.



HIGH-CLASS WORK ONLY. ☀ MODERATE CHARGES.

☞ PRICES TO SUIT EVERYONE ☜

**Almost Painless Extractions. Advice Free.**

EXTRACTIONS (First Hour) - - FREE.

## BOODLE'S TEETH

Also in attendance at . . .

Cirencester and Evesham	... ..	Every	MONDAY
Ledbury and Cinderford	..	„	TUESDAY
Tewkesbury	... ..	„	WEDNESDAY
Kidderminster and Ross	...	„	THURSDAY
Chepstow and Nailsworth	...	„	FRIDAY
Abertillery and Stroud	...	„	SATURDAY

And at Cheltenham, Worcester, Newport, 81, East Street,  
Bedminster, and 128, Gloucester Road, Bishopstone,  
Bristol, EVERY DAY.