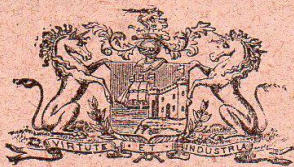


OFFICIAL PROGRAMME.

Price 2d.



Price 2d.

BRISTOL FOOTBALL CLUB.

(RUGBY FOOTBALL UNION)

Saturday, October 8th, 1921,

Bristol v. Gloucester

AT

BRISTOL RUGBY MEMORIAL GROUND,
FILTON AVENUE, HORFIELD.



BRISTOL TEAM, 1920-1921.

GEORGES'

CELEBRATED

BRISTOL BEERS AND STOUT

TO LET.

Apply:—
PROGRAMME EDITOR,
MEMORIAL GROUND.

MOTOR AMBULANCE.

Nursing Home Cases Specialised. :: Distance no object.
High Recommendations from Medical Profession.

Apply—**BRISTOL CITY & MARINE AMBULANCE CORPS,**
12 PERRY ROAD, ST. MICHAEL'S, BRISTOL.

'Phone: 1228 Bristol. Telegrams: AMBULANCE, Bristol.

CAFÉ ROYAL

72 High St., WESTON-SUPER-MARE.

PROPRIETOR: W. HEWLETT (LATE MAXWELL'S RESTAURANT, BRISTOL).

LUNCHEONS, TEAS, DINNERS High Class WINES,
AND SUPPERS. :: GRILL. SPIRITS & BEERS.

Special Prices given to Football and Cricket Clubs.

PATRONISED BY THE BRISTOL RUGBY FOOTBALL CLUB.

BIGWOODS LTD.,

Fish, Game, Poultry and Ice.

LOWEST CASH PRICES.

BALDWIN STREET, BRISTOL. Telephone
2741.

Also...
Victoria St., CLIFTON, Tel. 1112; North View, WESTBURY, Tel. 4114; Wells Rd., KNOWLE, Tel. 4639

NOTES.



Our President.
FRANK N. COWLIN, Esq.

WITH our beautiful ground an accomplished fact, we desire to pay tribute to its founder—Frank N. Cowlin. Rugby Football in Bristol has everything to thank him for and we raise our hats to him. Mr. Frank—as he is affectionately known by his employees—has always interested himself in amateur sport. He played for the Club at its inception and records tell us he was a forward of the right type—always playing a hard, clean game. In 1909 he became President and has simply endeared himself to players, officials and members. He it was who determined that Bristol should have a ground worthy of the boys who loved the game and are no more, and also worthy of the city. Those of us who know the inner workings, alone can realise the money, time, energy and brains Mr. Cowlin has given to fulfill his dream. His activities are not confined to Rugby Football, for “Wisden” says he played in his early days for the defunct Carlton Cricket Club. Now he devotes any spare time to Golf and Lawn Tennis. I’m told his language at Golf is extremely moderate and that his side-board is adorned with many silver spoons won in “Ye Ancient and Honourable Gamme.” Further in Civic affairs, Mr. Cowlin has been President of the Anchor and Grateful Societies, and also we believe he is a life-member of the Bachelors’ Society. Mr. F. N. Cowlin’s name will ever be associated with the Bristol Rugby Ground and thousands will join us in wishing him long life and continued happiness.

“OLD NIK.”

P.S.—We have just heard that our President is to be the Sheriff of Bristol for the ensuing year. We are proud of this and heartily congratulate him.

INFRINGEMENTS OF THE GAME.

Undoubtedly the game has come back with its old vigour. Players and supporters of a decade ago are rejuvenated and for those and our Soccer friends, the following infringements will assist them to appreciate the game more fully:—

- I. **OFFSIDE.** Any player (on the same side) being in front of the kicker is offside and must not come within 10 yds. of an opponent playing the ball. Penalty:—Free kick for intentional offside or a scrum down if offside by accident. Any offside player may be put onside by the kicker following up his kick and getting level with the ball.
- II. **KNOCK-ON.** A player in taking a pass must catch the ball cleanly. Penalty:—A scrum down where the infringement takes place or the Referee may allow the opposing side to take advantage of it.
- III. **PENALTIES** are given for (1)—Wilfully puts ball unfairly into scrum. (2)—Wilfully prevents the ball being fairly put into a scrum. (3)—Forward lifts his foot in scrum to obtain ball before it is properly put in. (4)—Player with ball in position is tackled and will not play the ball, etc.

Spectators are asked to note the Referee is the sole judge of the game and it is not sport to yell “Play the Game, Referee” when a decision is disliked.

RUGBY SUPPORTERS’ CLUB.

Every Club of any note has its Supporters’ Club and we are not the exception. Its membership runs into several hundreds and all are keen that the Bristol Rugby Club shall have full assistance. This voluntary help such as programme selling, ticket checking, etc., has been invaluable and is much appreciated by the Club officials. The Supporters’ Club also exists as a Sports Organisation and has its Billiards and Rifle-Shooting Sections with the County Ground Hotel its Headquarters. The officials are keen and are out for a Membership of 1,000—4/- entitles a Member to full benefits, and 2/- entitles an honorary membership with

MEET AT
"VE GROTTO"

(THE MARKET)

BEFORE AND AFTER THE MATCH.

All Beers drawn from the Wood. Luncheons Daily

Fry's
 MILK
Chocolate

AND OTHER

Fry Confections

are obtainable on the

Bristol Rugby
 Memorial Ground.

BRISTOL.

Right Wing
 J. E. H. Witherspoon (B), R. C. W. Pick
 T. G. Spoons (F).
 M. V. Shaw (H), J. S. Tuerker (I),
 F. Cummings (L), F. J. Coventry (M).

Referee:
 Mr. A. E. FREETHY (Neath).

S. Smart, G. Holford
 A. Hall, Major Rodger
 W. Dix (Scrum)
 S. Brown, E. C. Hughes
Left Wing,

GLOUCESTER.

INSIST UPON HAVING . . . **PURNELL'S** THE BEST since 1750.

PURE MALT VINEGAR

PURNELL & PANTER, LTD., BRISTOL.

Colours—Blue & White.

Right Wing
 (A), L. J. Corbett (D), R. G. B. Quick (E)
 H. Budd (scrum) (G).
 H. Hore (J), J. K. B. Crawford (K),
 A. E. Kibbey (H), W. G. Bryant (O).

Kick-off 3.30 p.m.

W. Ayliffe, T. Voyce.
 J. Lawson, J. Harris.
 T. Millington.
 C. P. Webb, N. Daniell
Right Wing.

Colours—Cherry and White.

"CAPSTAN"
 NAVY CUT
 TOBACCO
 AND
 CIGARETTES

in three grades:—

MILD
MEDIUM
FULL

W. D. & H. O. WILLS

Branch of the IMPERIAL TOBACCO COMPANY
 (of Great Britain and Ireland), LIMITED.

BRISTOL & LONDON

"THE"
PIPE SHOP.



D. GLASS & Co.

2, CLARE ST BRISTOL.

COUNTY GROUND HOTEL,

Tel. 3180. BISHOPSTON.

Family and Commercial.

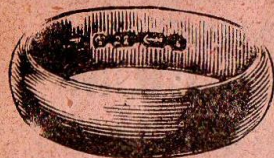
STABLING & GARAGE. BILLIARDS.
 CATERING. LUNCHEONS, TEAS, &C.
 WEDDING BREAKFASTS A SPECIALITY.

HEADQUARTERS OF THE BRISTOL RUGBY AND SUPPORTERS' CLUBS.

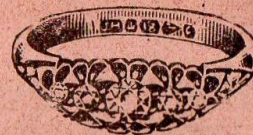
Ashton Gate Brewery Beers on Draught and in Bottle

Fixtures and Results to date.

DATE.	CLUB.	Where Played	Result	POINTS		DATE.	CLUB.	Where Played	Result	POINTS	
				FOR	A.					FOR	A.
1921.						1922.					
Sept. 10	Weston-super-Mare	Away	W	31	0	Jan. 7	Cardiff	Away			
„ 17	Stroud	Away	W	24	7	„ 14	Guys Hospital ..	Home			
„ 24	Cardiff	Home	W	19	3	„ 21	Plymouth	Away			
Oct. 1	Blackheath ..	Home	L	3	10	„ 28	Bath	Home			
„ 8	Gloucester ..	Home				Feb. 4	Cambridge University	Home			
„ 15	Newport	Home				„ 11	Richmond	Away			
„ 22	Guys Hospital ..	Away				„ 18	Plymouth	Home			
„ 29	Oxford University	Home				„ 25	Pontypool	Away			
Nov. 5	Clifton	Home				Mar. 4	Cheltenham ..	Home			
„ 12	London Irish ..	Away				„ 11	Gloucester	Away			
„ 19	St. Bar's Hospital	Home				„ 18	London Irish ..	Home			
„ 26	Glo'ster v. Somerset (County Match)	Home				„ 25	Northampton ..	Away			
Dec. 3	Cheltenham ..	Away				Apr. 1	Swansea	Home			
„ 10	Clifton	Away				„ 8	Harlequins	Home			
„ 17	Leicester	Away				„ 15	Leicester	Home			
„ 24	Old Merchant Taylors	Home				„ 17	London Welsh (Easter Monday)	Home			
„ 26	Northampton (Boxing Day)	Home				„ 18	Bradford (Easter Tuesday)	Home			
„ 27	Pontypool	Home				„ 22	Bath	Away			
„ 31	Swansea	Away				„ 29	Newport	Away			



BUY THE RING



AT

PARSONS' The Jewellers, Ltd.

16 OLD MARKET ST. or 39 HIGH ST.

Established 200 Years.

Finger Size Card Free.

THE SCHOLASTIC

FOR

Books : Stationery : Fountain Pens

The SCHOLASTIC TRADING CO., Ltd.,
Bridge Street and High Street, Bristol.

RUGBY SUPPORTERS' CLUB.—(continued from page 3).

the Supporters' Badge. Mr. J. Hind is Chairman—he is a glutton for work and can be found in the popular side shouting "Programmes, tuppence each." Mr. A. J. Owens Britton is Hon. Sec. and was the zealous Hon. Sec. at our recent Carnival. Messrs. Bert Forse and E. Bickle will teach you how to hit the front at skittles and Messrs. Ruffell and Machin explain how bulls-eyes are got. They are a happy family and will arrange the Excursions for our away matches. We hope to give results periodically of the Skittles and Shooting Matches.

GOSSIP AMONG THE SCHOOLS.

(CONTRIBUTED BY "GINGER.")

League Matches last Saturday. Quite a happy send off.

Redcliffe among the early successes as usual, 24 points to 3 against St. Nicholas who scored first.

"Old Nik" speaketh muchly about a Redcliffe boy named Lillicrop.

The name seems familiar. Any relation?

Wick Road down at Horfield by a couple of tries, the men of Ashley doing the trick.

Glad to see Freddy Marsh out with his boys again after a serious operation.

Says they'll come on and "Ponty" knows.

Castle three tries down at half-time, but they just got home by 11 points to 9. They "gingered," that was all. Several Schools have apparently learnt how to do this. Good!

A field day for North Street who ran up 34 points to 3 against St. Mary's, who, however, have a nice little pack of forwards.

St. Mary's would like an Old Boy to interest himself in the team this season. Oh what a chance!

Sefton Park put paid to Anglesea by 2 tries to nil. The Angles played like little demons in the first quarter of an hour and in the closing stages, but without avail.

Ashley Down have now a properly constituted 2nd XV. like North Street and Castle. The movement is spreading. Other Schools please copy.

Fairfield are playing Rugby next term, St. George have started and Cotham follow suit when they have honoured their present fixtures. Good wine, etc.

What a grand thing it would be if all the Boys' Schools in Bristol, playing Rugby, were affiliated to the Schools' Union, not necessarily in order to play competitive football, but that the "Bristol Boys' Team" should represent the cream of the City.

By the way the Bristol Boys hope to entertain the Bath lads on December 3rd on this ground. Get ready my lads!

IN TABLOID FORM.

Mr. W. Grimster of the Ashley Inn has presented the Club with a Mascot—a Billy Goat with collar and a chain attached strong enough to hold an elephant. Very thoughtful of you Mr. Grimster and we thank you, and hope Master Billy will bring us luck. If he doesn't—well look out!

Our ladies! bless'um!! They have worked hard for us and no mistake. Now Miss Kathleen Maddocks has kindly fixed a Dancing Matinee by her talented pupils at the Hippodrome, on Saturday, October 22nd, to help to wipe out our deficiency on the Ground. We do hope there will be a packed house, for the performance will be worth it and the object.

Blackheath were greatly impressed with our Ground and accommodation.

Also with the impartiality of the spectators.

Colonel W. S. D. Craven the famous old international, and present Blackheath Hon. Secretary, stated after the game that he never remembered his Club receiving such a great reception.

Gloucester are paying Bristol a pretty compliment to-day.

By inviting our Players and Officials to dine with them after the match.

It will be remembered that Pontypool treated us similarly last season.

Such incidents are greatly appreciated and do much to create a friendly feeling between Clubs.

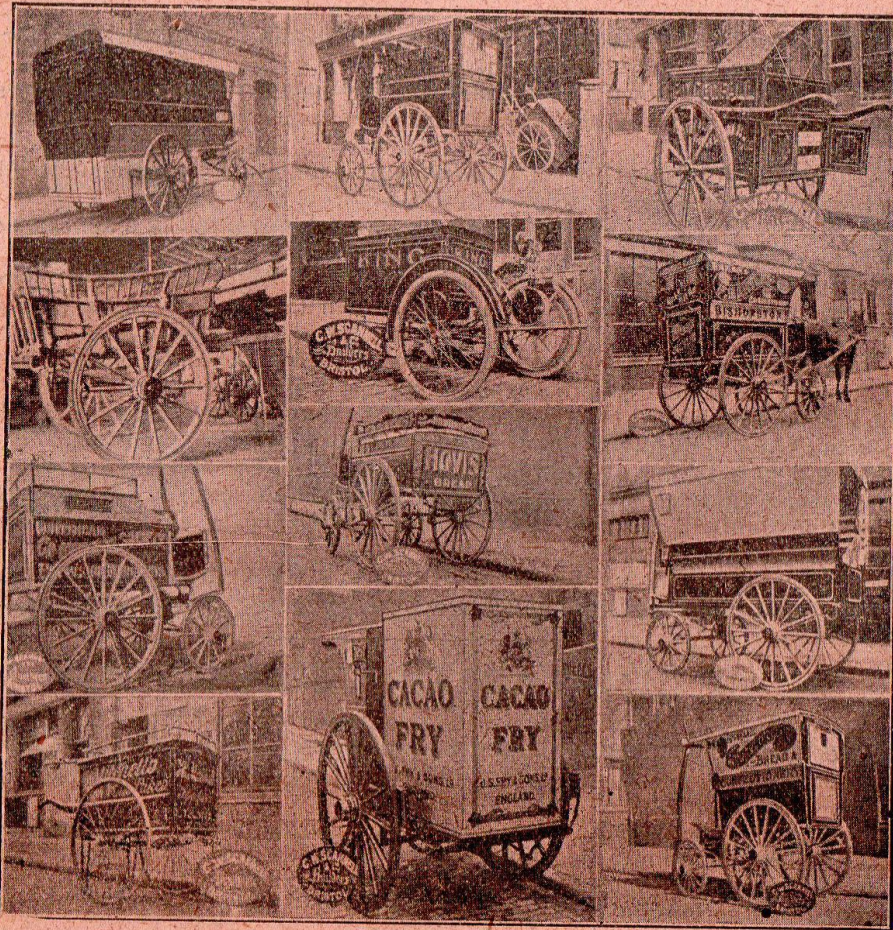
Tel. No.: BRISTOL 2115.

Established 1846.

C. W. SCANNELL,

8-10 Ellbroad St. & Rosemary St.,
BRISTOL.

Maker of . . .
BAKERS' PEELS, TROUGHS, TABLES. TIN WORK. FURNACE TOOLS.



Maker of BAKERS' VANS, CARTS, BARROWS. BUSINESS CONVEYANCES.

TYRING DAILY.

VARIETY OF TRUCKS ALWAYS IN STOCK.

ALL REPAIRS GUARANTEED.