

PRICE ONE PENNY.

HEALTHY PEOPLE
EAT

HERCULES

BROWN BREAD

ASK YOUR BAKER FOR IT.

PRIDAY METFORD & CO. LTD.

Millers, Gloucester.

Gloucester Rugby Football Club.

OFFICIAL PROGRAMME.

Saturday, JAN., 17th, 1925

Old Blues

v.

GLOUCESTER

At KINGSHOLM GROUND.

Next Week—Saturday, January 24th, at Kingsholm.

Berry Hill v. Gloucester II.

Kick-off 2-45 p.m.

Saturday, January 31st—

Swansea v. Gloucester

No 99994

Published by the Gloucester Rugby Supporters' Club,
Hon. Sec. and Programme Editor, 2 Parliament Street, Gloucester.



International
Exhibitions, London.

Awarded
Silver and Bronze
Medals & Diplomas
1910, 1911, 1913, 1920 & 1922

ASK FOR
HARDING & CO.'S
MINERAL WATERS AND
STONE GINGER BEER.

Which have been before the Public for upwards of 84 years and are
still Unequaled as shown by our recent successes.

Works:— Barton Street, Gloucester.

HOW TO BECOME SATISFIED!

This is easier than it seems when it is a matter of Wearing Apparel.
All you have to do is to become one of my many regular customers
—then satisfaction will follow

ALBERT PATES
HOSIER, HATTER AND GENERAL OUTFITTER,
56 NORTHGATE, GLOUCESTER.
SUITS TO MEASURE A SPECIALITY.

URCH'S RESTAURANT



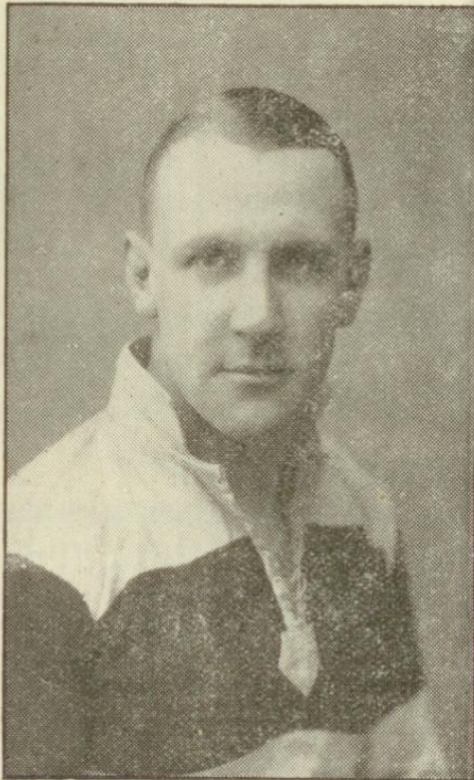
IN
SOUTHGATE STREET
FOR HIGH-CLASS
CAKES & CONFECTIONERY

Luncheons and Teas at Moderate Charges. Wines, Ale and Stout.

"GOLD THAT BUYS HEALTH IS NOT ILL-SPENT."

To-day's match has been set aside for the benefit of the Gloucester Royal Infirmary. After striking the average gate receipts allotted for previous matches, the balance will be devoted to the £10,000 Fund. We appeal to all enthusiasts to do their bit, so that a handsome sum may be realised. Members wishing to contribute, can do so by putting their contributions in the boxes at the Entrances.

DR. G. G. C. TAYLOR,
(Three-quarter).



Photograph by H. K. FOX.

Age 26.

Height, 6 ft.

Weight, 12 stone.

Gloucester may claim to be fortunate in having the services of this talented player, and it is appropriate that a review of his career should appear in our programme on the occasion of the Gloucester F.C. giving the whole of to-day's receipts to the Royal Gloucestershire Infirmary. The Club has done this generous action for several past years.

Dr. Taylor, who is one of the medical staff of our Infirmary, played for Newcastle School, Durham University, Northern, and College of Medicine. Represented Northumberland at outside half from 1919-1924, being captain of the side for 5 years. Played for the North v. England (International Trials) in 1920, 1922 and 1923, and had the honour of being on the reserve for the Rugby Centenary match. Has been selected for all the Gloucestershire matches this season. Good at centre and outside half, preferring the latter position. A fine kick, good tackler and in attack varies his game to advantage. Has a "dummy" which has been sold on numerous occasions.

His partnership with R. Milliner has re-vitalised the Gloucester back play, and it is the hope of his many admirers that he may merit further honours, and that he will have the joy of playing for Gloucester for many seasons.

Lotus and Delta

For Gentlemen

Lotus 444. Box Calf Laced Boot for Men. A quality Boot of undoubted value at 42/-

Delta 509. Box Calf Laced Boot for Men. Leather Lined and Stout Sole. A stylish Boot for Town wear in Winter at 35/-

Delta 501 A Box Calf Boot as illustrated. Size and Half Sizes at 32/6



CHARLES fashionable . . .
Shoemakers

TUDOR HOUSE - WESTGATE - GLOUCESTER.

First XV. Fixtures for Season 1924-25.

1924				1925					
	Rslt	For	Agst	Points		Rslt	For	Agst	Points
Spt. 13	Lydney	H	D	0	0	Jan. 3	Llanelly	A	
18	Moseley	H	W	24	14	10	Coventry	A	W 8 3
20	Coventry	H	W	12	6	17	Old Blues	H	
27	Bath	A	L	7	16	24	Guy's H.	A	
29	Cinderford	H	W	8	7	31	Swansea	H	
Oct 4	Bristol ...	H	L	10	12	Feb. 7	United S.	A	
11	Guy's H	H	L	0	5	14	Cardiff ...	H	
18	Cardiff	A	L	0	19	21	Richmond	H	
25	Lydney ...	A	W	5	3	28	Swansea	A	
Nov. 1	Plymouth A.	H	W	11	3	Mar. 7	Bristol ...	A	
6	Oxford Uty.	H	W	23	16	14	Llanelly ..	H	
8	Devon S...	H	L	0	8	21	Newport	H	
13	Jubilee Mth	H	W	11	9	28	St. Bart's.	H	
15	Newport ...	A	L	12	25	April 4	Pontypool	A	
22	Cheltenham	H	W	26	0	11	N'thern XV.	H	
29	Harlequins	A	L	6	17	13	London W.	H	
Dec. [6	United S.	H	L	0	21	14	Cinderford	A	
13	Cheltenham	A	W	9	0	18	Devon S.	A	
20	Pontypool	H	W	8	6	20	Plymouth A.	A	
26	Old Merc. T	H	L	0	3	21	Sidmouth	A	
27	Bath ...	H	W	21	0				