

PRICE ONE PENNY.

Royal Warrants 1837.
1885, 1901, 1911



By Appointment

JOHN DOBELL & Co. Ltd.

Wine and Spirit Merchants.

Purveyors of Wine to His Majesty the King by Appointment.

Dobells Red Label Scotch Whisky 11/6 per bottle.

Dobells Brandy * * * 14/- per bottle.

Head Office—246, High Street, Cheltenham.

Branch Offices—20 Colonnade, Cheltenham; Newport; Tewkesbury
Upton-on-Severn and

37 EASTGATE ST., GLOUCESTER.

Telephone No. 3462.

Local Manager—A. H. GRAY.

Gloucester Rugby Football Club.

OFFICIAL PROGRAMME.

SATURDAY, JAN. 31st, 1931

OLD BLUES

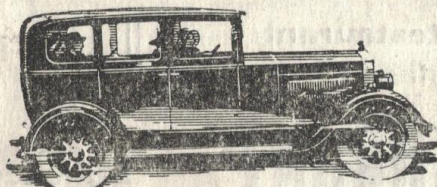
v.

GLOUCESTER

At Kingsholm Ground.

BUY BRITISH AND BE PROUD OF IT.

Buy MORRIS and Benefit.



From **£125** Upwards

Guaranteed 12 Months.

Top Value for Used Cars in
Part Payment.

WICLIFFE MOTOR CO. LTD.,

Morris House, Bath Rd., Tel. 3722
and 88 High St., Tel. 2518
CHELTENHAM SPA.

Western Garage, Cainscross Rd., Tel 268
and Russell St., Tel. 389 and 389
STROUD.

**PUBLISHED BY THE GLOUCESTER RUGBY
SUPPORTERS CLUB.**

Hon. Sec. and Programme Editor, 9 Parliament Street, Gloucester

OUR VISITORS.

To-day we welcome another "Old Boys" Club to Kingsholm in the Old Blues, who are attractive and popular visitors where're they go. Founded in 1871, the Schools have spacious headquarters situated at West Horsham, Sussex, accommodating over 800 boys, and the "Old Boys" Rugger Club has a membership of over 150. With a continual stream of players to keep up their strength, the Club is able to run nine teams every Saturday. Now in the first flight of "Old Boys" Clubs, our visitors oppose mainly all the leading Clubs in England and Wales, a fact which speaks well for the enthusiasm and hard work of the Officials of the Club. Of to-day's side W. Nielson (full back) has already played in the Scottish Trials; N. Payne (forward) has played for Surrey County. Our visitors previously played the five-eighth game, but owing to lacking weight in the pack, have now given up this form of combination. The "Old Blues" have still to gain their first victory against the City, although in the corresponding game at Kingsholm last season, playing good open football, a well contested game ended in a draw of 6 points all. With both sides at practically full strength, another close game should be witnessed.

JUNIOR FOOTBALL

The five clubs in this Combination are proceeding fairly well. All are keen and try hard to play good open football. Our local referees, who are helping to encourage these lads, are schooling them in the field of play during their games and are also giving their services free of charge. The Wagon Works are a fairly good side, strong forwards who push and get the ball well in the scrums, but the backs must need to run more straight up the field so as not to bore the wings to touch, more coaching should remedy these faults and the side should do well. The Gordon League have played themselves into a real live team, good everywhere. The forwards who are big enough, need to push more together, and with this overcome, it should take a good side to beat them. The Widden boys are also well together, having won three out of the four games played, which speaks well of the all-round ability of the side, and who are fortunate in having a Captain who puts every effort into his play and leads the side well. The Archdeacon lads are a good all-round team, plenty of pluck and when more together will go far. A. Croose, the old West-End and Gloucester II. full-back, has kindly consented to coach these boys, who therefore should benefit accordingly. The Spartans side, who were the last to join this organisation, although not yet up to the standard are gradually improving and with more coaching should not be far away from the rest at the finish. The Supporters' Club, with the support of the Gloucester Club, are arranging one or two inter-town games, probably with Bristol and Newport, at Kingsholm and we look to all enthusiasts to give us their support in these games.

CITY NOTES.

M. A. McCanlis will be welcomed to the First XV. to-day after an absence of several weeks, mainly due to England and Trial games.

F. Wadley and A. Carpenter, who did so well in the last Trial game, should receive consideration for the English Team v. Ireland on February 14th.

Dr. Steele-Perkins, who is included in the City pack, is engaged at the Gloucestershire Royal Infirmary.

PHONE 2567
MODERN FURNITURE both new and second-hand, can be inspected in Lea's spacious Showrooms at attractive prices.
ANTIQUE FURNITURE A fine collection of genuine bargains is always to be seen at Lea's, Gloucester.

LARGEST STOCK IN THE COUNTY TO SELECT FROM.

LEA and CO.,

Complete House Furnishers,

NORTHGATE STREET and ALDATE STREET,

GLOUCESTER.

All Goods delivered Carriage Paid.

For very best Enlargements of your Holiday
 Snaps—take your *FILMS* to

WALWIN *Kodak Specialist,*

DISPENSING AND PHOTO CHEMIST.

SOUTHGATE ST., GLOUCESTER.

Telephone 2844.

TRAVEL
ALL TOGETHER
—IN COMFORT!

If you are arranging a party for a Football, Hockey, Skittles or Billiards Match, a Theatre, a Dance, or any such Outing, you should

HIRE A

"Bristol"

COACH OR BUS

will go anywhere at any time and will bring your party back home at whatever hour may suit you. The charges are very reasonable. Call, write, or 'phone for a quotation.

THE LOCAL MANAGER
 THE BRISTOL TRAMWAYS AND
 CARRIAGE CO., LTD.
 LONDON ROAD, GLOUCESTER.
 Telephone 2291.

THE BEST
TALKIES
 IN TOWN.

GLOUCESTER
HIPPODROME

SEE
 BELOW

OLD BLUES.

Colours—Red, Yellow and Blue.

Right Wing: T. G. Jennings (3)

Full Back: W. W. Nielson (1)

Left Wing: R. A. Jones (5)

Right Centre: A. W. Childs-Clarke

Left Centre: G. N. Hooper (6)

Stand-off Half: H. E. R. Wales (4)

Scrum Half: E. L. Mathias (17)

Forwards: P. S. Osborne (9)

N. K. Payne (11)

E. M. Undery (7)

J. R. Harrison (12)

J. J. Redman (15)

H. J. Hobden (16)

P. G. Wyatt

D. C. V. Roberts (13)

Referee:

Mr G. ROMANS
 (Glo'shire R.U.)



KICK-OFF

3-0 P.M.

Forwards: L. E. Saxby (8)

F. Russell (9)

J. Hemming (10)

E. Comley (11)

F. Wadley (12)

A. Carpenter (14)

L. Franklin (15)

Dr. Steele-Perkins (16)

Scrum Half: F. Price (7)

Stand-off Half: Don Meadows (6)

Right Centre: A. E. Brookes (1)

Left Centre: M. A. McCanils (5)

Right Wing: Roy James, Capt. (4)

Left Wing: L. Abbey (2)

Full Back: H. Boughton (1)

GLOUCESTER

Colours—Cherry and White.

Constance Bennett, the £60,000 Star in

"Common Clay"

TO-NIGHT:—

ALSO
 John Stuart in **"NO EXIT"**

EAT MORE

**HERCULES
 BROWN
 BREAD**

— AND —
KEEP FIT!

Friday, Metford & Co. Ltd
 Millers Gloucester.



'YOUNGER'
 for **YOU**
 WILLIAM YOUNGER'S
Scotch Ale
 BREWED IN EDINBURGH

PICKFORD & SON

DECORATORS'
 MERCHANTS.

Glass, Paints, Brushes,
WALLPAPERS.

BRUNSWICK ROAD,
GLOUCESTER.

Tel. 2904.



CITY NOTES.—*continued.*

A. E. Brookes, the Oxford University and London Welsh centre is again welcomed in the City team to-day at Kingsholm.

On Saturday, February 14th, Gloucester journey to Cardiff to play the return game with the Welsh side. The Supporters Club are making this their "**Annal Outing**" and every effort will be made to make this a great success. The G.W.R. are arranging a special trip (see advert inside back page) and we hope that a record number of Supporters will journey to Cardiff and support the Cherry and Whites.

COUNTY NOTES.

On Thursday next, Supporters of Rugby Football in our County will have an opportunity of witnessing the Semi-Final of the County Championship between Hampshire and Gloucestershire at Kingsholm. On the last occasion these teams met was in the Semi-Final at Southampton in February, 1926, when Hampshire were victorious by 16 points to 6. Gloucestershire on that occasion were reported to have had most of the game, but was unfortunate in the points of scoring. On Thursday we hope to see a good game and Gloucestershire successful. Hampshire are undoubtedly a fine side and with all their talent available should prove real strong opposition. The Captain of the side is the "Old Cheltonian" Bunny (scrum half) who was on the reserve for England in the Welsh game at Twickenham. The Gloucestershire team has been selected and includes no less than five Internationals and five Trial players, and if all selected players are available the County should again become Champions of the South, thus giving them the right to play the winners of Lancashire v. Warwickshire in the Final in Gloucestershire on Saturday, March 14th. Gloucestershire's accomplishments in Group, Semi-Final and Final matches bears the closest inspection and of which no other County of late years can compare. The referee for the game will be selected by the Rugby Union and no doubt some of the English Selectors will be present. By general arrangement of all Counties, the minimum price of admission is 1/- owing to the profits on the match having to be shared between the two Counties, this price must be adhered to. Reserved Seats can be booked at Mr. A. Hudson, Sports' Depot, Northgate Street, Gloucester. Reserved Wings (New Stand) 3/-. Centre (New Stand) 4/-. Admission, Worcester Street 2/-. Dean's Walk 1/-. Kick-off 3-15 p.m.

North Gloucester Rugby Football Combination.

Cup Competition, 1931.

SENIOR SECTION—First Round

- | | |
|------------------------------------|---|
| A Spartans v. Gordon League | C Widden Old Boys v. Atlas Works |
| B Barnwood v. Wagon Works | D St. Gregory's v. West End |

Second Round

- | | |
|---------------|---------------|
| B v. C | A v. D |
|---------------|---------------|

JUNIOR SECTION—First Round

- | | |
|--|--|
| A Wagon Works 'A' v. West End 'A' | C Painswick v. All Blues |
| B Gordon League 'A' v. Widden 'A' | D Stroud Nomads v. Spartans 'A' |
| E Gordon League 'B' v. Barnwood 'A' | |

Second Round

- | | |
|-----------------|-------------------|
| F B v. A | byes C D E |
|-----------------|-------------------|

Third Round

- | | |
|---------------|---------------|
| E v. C | D v. F |
|---------------|---------------|

First-named Club has choice of ground.

First Round to be played on February 14th.

Gloucester Rugby Football Club, Season 1930-31.

		Points					Points		
		Rslt	For	Agst			Rslt	For	Agst
1930	September				1931	January			
11	Stroud ; away	W	22	3	3	Llanelli ; away	L	3	9
13	Lydney ; home	D	0	0	10	R.A.F. ; home	W	8	3
20	Moseley ; home	W	23	0	17	Bath ; away	L	3	9
25	Bath ; home.	W	13	0	24	Guy's Hospital ; away	L	3	9
27	Northampton ; home	L	8	11	31	Old Blues ; home			
October					February				
4	Bristol ; away	L	0	13	7	United Services ; away			
11	Leicester ; away	L	8	27	14	Cardiff ; away			
18	Cardiff ; home	W	17	10	21	Plymouth Alb ; home			
25	Moseley ; away	D	6	6	28	Guy's Hospital ; home			
November					March				
1	Llanelli ; home	D	0	0	7	Swansea ; away			
8	Oxford University				14	Bristol ; home			
	Greyhounds ; home	W	26	8	21	Newport ; home			
15	Newport ; away	L	3	6	28	Leicester ; home			
22	Devon Services ; home	W	6	5	April				
27	Oxford University ; home	L	10	13	4	U.C.S. Old Boys ; home			
29	Swansea ; home	L	10	11	6	London Welsh ; home			
December					7	Lydney ; away			
6	United Services ; home	W	9	3	11	Devon Services ; away			
13	Cheltenham ; away	D	0	0	13	Plymouth Llb ; away			
20	Northampton ; away	W	8	3	18	Harlequins ; home			
26	Old M Taylors ; home	L	8	13					
27	Cheltenham ; home	L	3	8					

LIST OF SCORERS

James	...	5 tries
Price	...	5 tries
Loveridge	...	3 tries
Davies	...	3 tries
Meadows	...	3 tries
Abbey	...	3 tries
Spackman	...	2 tries
Franklin	...	2 tries
Hordern	...	2 tries
Saxby	...	2 tries
McCanlis	..	2 tries

Stephens, Fowke, Comley, Hiam,
Crichton-Miller, Hough, Powell,
Wadley, Andrews, Cridlan, Hemming,
G. Davies 1 try each.
Boughton 7 converted goals, 3 penalties
and 1 Dropped Goal
James, 8 converted goals, 1 drop, 2 P.G.
R N Loveridge 2 converted goals
Stephens, 1 drop goal
Price, 1 drop goal

Great Attraction at Kingsholm.

Thursday Next February 5th
Hampshire v. Gloucestershire

(Semi-Final County Championship)

Kick-off 3-15 p.m.