

PRICE ONE PENNY.

Royal Warrants 1837.
1885, 1901, 1911.



By Appointment

JOHN DOBELL & Co. Ltd.

Wine and Spirit Merchants.

Purveyors of Wine to His Majesty the King by Appointment.

Dobells Red Label Scotch Whisky 11/6 per bottle.

Dobells Brandy * * * 14/- per bottle.

Head Office—246, High Street, Cheltenham.

Branch Offices—20 Colonnade, Cheltenham; Newport; Tewkesbury
Upton-on-Severn and

37 EASTGATE ST., GLOUCESTER.

Telephone No. 3462.

Local Manager—A. H. GRAY.

Gloucester Rugby Football Club.

OFFICIAL PROGRAMME

SATURDAY, January 30th, 1932

Old Blues

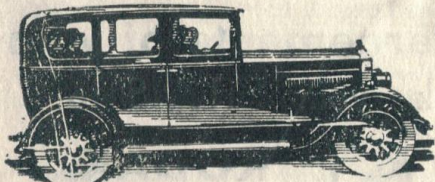
v.

GLOUCESTER

At Kingsholm Ground.

BUY BRITISH AND BE PROUD OF IT.

Buy **MORRIS** and Benefit.



From **£100** Upwards

Guaranteed Two Years.

Top Value for Used Cars in
Part Payment.

WICLIFFE MOTOR CO. LTD.,

Morris House, Bath Rd.
Tel. 3722.

CHELTENHAM SPA.

Western Garage, Cainscross Rd. Tel 268
and Russell St, Tel. 388 and 389.

STROUD.

PUBLISHED BY THE GLOUCESTER RUGBY SUPPORTERS CLUB.

Hon. Sec. and Programme Editor, 2, Parliament Street, Gloucester.

OUR VISITORS.

To-day we welcome another "Old Boys" to Kingsholm in the Old Blues, who are attractive and popular visitors where're they go. Founded in 1871 the Schools have spacious headquarters situated at West Horsham, Sussex, accommodating over 800 boys and the "Old Boys" Rugger club has a membership of over 150. With a continual stream of players to keep up their strength, the club is able to run nine teams every Saturday. Now in the first flight of "Old Boys" Clubs our visitors oppose mainly all the leading clubs in England and Wales, a fact which speaks well for the enthusiasm and hard work of the Officials of the Club. It is rather disappointing that several of the regular side cannot make the journey to-day owing to business, and the reserves that will complete the side are slightly lacking first class experience. H. W. Franklin, the old Oxford full back, had promised to play, but cannot get away. The forwards include J. Young who is Captain and an energetic leader and N. K. Payne and F. N. Pearce both of whom have played for Surrey. T. G. Jennings (wing) has also appeared for Sussex on several occasions at three-quarter. The Old Blues were one of the few clubs that previously played the five-eighth game but owing to lack of weight in the pack, have now given up this form of combination. Our visitors have still to gain their first victory against the City, a drawn game in season 1930 being their best performance. In the corresponding game last season the "Old Blues" playing good open football were defeated by 15 points to nil. To-day we again look forward to some delightful Rugger which should prove pleasant for players and spectators alike.

CITY NOTES.

J. C. Brooks is unable to play to-day as he is required at Wycliffe College.

The Portsmouth Game. Owing to the Semi-Final between Hampshire and Gloucestershire being played at Portsmouth, on Saturday next, it is unlikely that the game fixed between United Services and Gloucester will not now take place.

The Rugby Footballers Service (and Memorial Service for the late S. Bayliss and S. R. Brown) was held last Sunday evening at the St. Catherine's Church. The Service was largely attended and provided a period of fragrant memory and inspiration for the future. The Rev. H. J. Hensman conducted and also preached appropriately. Messrs. L. E. Saxby and J. C. Brookes read the Lessons and it was good to have such hearty singing. "Crossing the Bar" was rendered by the Choir with marked effect.

The Gloucester United secured another fine win over Bream on Saturday last. Several promising young players are included in the side, that it is hoped an early opportunity will arise to include them in the Premier side, thus gaining first class experience whenever possible.

THE LOCAL CUP TIES.

The result of the draw which took place last week, resulted as follows:—

Senior Section—First Round

A All Blues v Wagons Works C Barnwood v Widden Old Boys
B St. Gregory's v Gordon League D Spartans a bye

Second Round—A v C. D v B.

Junior Second—First Round

A Barnwood A v Gordon League A C Gordon League B v Tredworth
B Widden Old Boys A v Spartans A D Wagon Works A v Painswick
E All Blues A v Atlas Works

Second Round—F D v E. Byes—A, B and C.

Third Round—C v B. F v A.

First Round to be played on Saturday, February 13th.

LEA and CO., 'Phone 2567
 Complete House Furnishers,
 NORTHGATE STREET and ALDATE STREET,
 GLOUCESTER.

Three-Piece Suites and Bedroom
 Suites a Speciality.
 Call and Inspect the Largest Stock in the County.

The most Complete Restaurant
 in the West of England

URCH'S RESTAURANT

14 SOUTHGATE STREET,
 GLOUCESTER.

CHARLES URCH - - Proprietor.

All Receptions
 Catered for.

—
 Luncheons
 and Teas.

—
 Wines and Ales

—
 Garage for 100 Cars.

For Outings
 of all kinds

HIRE A

"Bristol"

COACH OR BUS

A "Bristol" Coach or Bus will go anywhere, at any time, and will bring your party back home at whatever hour may suit you. An enjoyable outing is assured if a "Bristol" Coach or Bus is hired. Call, write or phone for a quotation.

THE LOCAL MANAGER
 THE BRISTOL TRAMWAYS AND
 CARRIAGE Co., LTD.
 LONDON ROAD, GLOUCESTER.
 Telephone 2261.

GLOUCESTER'S BIGGEST AND BEST TALKIE HOUSE
THE HIPPODROME, Eastgate (See Below)

OLD BLUES

Colours—Red, Yellow and Blue.

Right Wing: T. G. Jennings
 Right Centre: G. H. Goobey
 Stand-off Half: L. M. Mathias
 Forwards: J. N. Young
 P. G. Wyatt
 W. A. Jones
 Full Back: A. H. Other
 P. Bartram
 Left Wing: R. A. Jones
 Left Centre: G. N. Cooper
 Scrum Half: M. E. Wales
 N. K. Payne
 G. S. Atkinson
 T. N. Pearce
 T. Garrard
 J. C. Roberts
 C. Chapman

Referee:

Mr. G. HALE
 (Bristol R.U.)



KICK-OFF

3-0 P. M.

Forwards: *L. E. Saxby, Capt. (8) F. Wadley (9) J. Hemming (10) Dr. R. N. Williams (12)
 *A. Carpenter (11) E. Comley (14) A. Welshman (15) Ken Smith (16)
 Scrum Half: F. Fildes (7) Stand-off Half: Roy James (6)
 Right Centre: *M. A. McCanlis (3) Left Centre: A. E. Brookes (4)
 Right Wing: *C. C. Tanner (2) Full Back: H. Boughton (1) Left Wing: G. W. Parker (5)

GLOUCESTER

Colours—Cherry and White.

Continuous Daily—1-30 till 10-30

Richard Dix, Irene Dunn
 and Estelle Taylor in— **"CIMARRON"** Creation never touched it!

Watch Points
 EAT

**HERCULES
 BROWN
 BREAD**

For Health

Friday, Metford & Co. Ltd
 Millers Gloucester.

Get in 'touch' with Father William
 and at the first 'try' you will find
 yourself 'converted' to

WILLIAM YOUNGER'S
Scotch Ale
 BREWED IN EDINBURGH



CHERRY and WHITE hold a fine reputation at
 KINGSBOLM but they are only two of many
 colours of high repute stocked by

Pickford & Son

Our colours in paints, both flat and gloss, and
 distempers are the finest on the market.

BRUNSWICK ROAD, Gloucester
 Tel. 2904.



COUNTY NOTES.

My readers will have noticed that the selectors of the County team, have made little change from the side that defeated Somerset, to oppose Hampshire, in the Semi-Final to be played at Portsmouth on Saturday next, February 6th. Comley has been preferred to Allen in the forwards, thus giving the Gloucester front row an opportunity of playing together for the County for the first time this season and I sincerely hope they will prove successful. Although the Gloucestershire forwards were apparently beaten in the Somerset match, it is realized that an entirely different style of football will be played at Portsmouth, consequently the committee have only made the one change. Gloucestershire are fortunate in having two such excellent full backs as T. Brown and H. Boughton to choose from, both of whom played fine games for their clubs on Saturday last. Hampshire played splendid football at Kingsholm last season and with full expectations of them doing equally as well at home this year, one can imagine this match will be well worth seeing. On the occasion of Gloucestershire meeting Hampshire in the Semi-Final in 1926, the game was played at Southampton and Hampshire scored the greater number of points, although they were defending for the major portion of the game. Players and Officials will leave Gloucester on Friday afternoon, arriving at Bristol, where they will be joined by the Bristol contingent, continuing the journey to Portsmouth and arriving at 9.35 Friday night. The return journey will be made via London, leaving Portsmouth 4.5 p.m. Sunday afternoon and arriving at Gloucester 10.16 p.m. The G.W.R. are running an excursion, leaving Gloucester Saturday morning 10.0 a.m. and leaving Portsmouth for the return journey about 7.0 p.m. (6/6 return) for details, see advertisement inside back page. Mr. A. B. Hindmarsh (Durham) has been appointed by the Rugby Union to officiate the game. Should Gloucestershire prove successful, they will oppose the winners of the Warwickshire and Durham game in the Final on the latter's Ground. Here's to the success of our County Team.

OUR JUNIOR COMBINATION.

On Saturday next, Gloucester Juniors play the first of their Inter-Town games against Cardiff Juniors at Kingsholm. The committee of the Gloucester F.C. are in full sympathy with the Junior organisation, have rendered their help whenever possible and it is chiefly through their assistance, we are able to play their Inter-Town Games at home. The Gloucester Juniors are at present showing splendid form and with the Final trial being played to day on the Wagon Works Ground, we hope to select a side able to hold its own with any other Junior organisation in the County. These lads average age is 17 years and though perhaps not so heavy as other junior teams, are a lesson to some older players in the way Rugged can be played and how attractive to watch, as regards the passing game. Many hours of teaching and coaching has been given by such well-known sportsmen as Mr. Albert Brown, Mr. E. Browning, Capt. Blackwell and many well-known local referees and local secretaries. This organisation is now entirely controlled by the Rugby Supporters Club and who with financial help from the Gloucestershire County R.U. provide these juniors with jerseys and footballs and any other necessity.

On Saturday next we need your help in assisting the juniors. Just pay a visit to Kingsholm and support the boys. Admission to ground 6d. and 3d. Kick-off 3 o'clock. The Cardiff Juniors is considered the strongest junior side in Wales. The average age of the team is 17½. I understand that the side includes several budding Internationals. Norman Fender, Graham Jones and T. Stone were all products of the junior team. Don't forget to pay a visit to Kingsholm on Saturday next.

Gloucester Rugby Football Club, Season 1931-32.

1931	Month	Rslt	Points		1932	Month	Rslt	Points	
			For	Agst				For	Agst
10	September	W	9	3	2	January	D	0	0
12	Lydney; home	L	3	5	9	Plymouth Alb; home	W	7	0
19	Moseley; home	W	8	3	16	Bath; home	W	8	3
26	Northampton; home	W	10	8	23	Guy's Hospital; home	W	16	6
	October				30	Old Blues; home			
1	Bristol; home	W	8	6		February			
3	Llanelly; away	L	3	12	6	United Services; away			
10	Leicester; home	W	12	6	13	Cardiff; home			
17	Cardiff; away	L	0	17	20	Leicester; away			
24	U.C.S. Old Boys; home	W	15	8	27	Cheltenham; home			
31	Devon Services; home	W	13	6		March			
	November				5	Swansea; home			
5	Oxford University Greyhounds; home	W	18	3	12	Bristol; away			
7	Swansea; away	L	3	13	19	Newport; away			
14	Bart's Hospital; home	W	11	8	26	Wakefield; home			
21	Newport; home	L	0	5	28	London Welsh; home			
28	Oxford University; away	L	6	17	29	Bradford; home			
	December					April			
5	Blackheath; away	L	3	6	2	Harlequins; home			
12	Lydney; away	L	5	7	9	Llanelly; home			
19	Northampton; away	L	0	3	16	Plymouth Alb; away			
26	Old M Taylors; home	D	5	5	18	Devon Services; away			
					19	Bath; away			

A REMINDER TO ALL SPORTSMEN

Parkers are the best people to keep your clothes smart and fresh. An occasional cleaning by Parkers — saves you pounds per year. —

PARKERS

Dyers and Cleaners.

Since 1838.

Eastgate Street
Barton Gates
105, Northgate Street
8, Russell Street
95, Strand

GLOUCESTER

Tel. 3212.

STROUD Tel. 28.

CHELTENHAM Tel. 2407

And at Lydney, Coleford, Ross-on-Wye, Cirencester.