

PRICE ONE PENNY.

Royal Warrants 1837^a
1885, 1901, 1911.



By Appointment

JOHN DOBELL & Co. Ltd.

Wine and Spirit Merchants.

Purveyors of Wine to His Majesty the King by Appointment.

Dobells Red Label Scotch Whisky 12/- per bottle.

Dobells Brandy * * * 14/- per bottle.

Head Office—246, High Street, Cheltenham.

Branch Offices—24 Promenade Cheltenham; Newport; Tewkesbury
Upton-on-Severn and

37 EASTGATE ST., GLOUCESTER.

Telephone No. 3462.

Local Manager—A. H. GRAY.

Gloucester Rugby Football Club.

OFFICIAL PROGRAMME

Easter Monday, April 22nd, 1935

SALE

v.

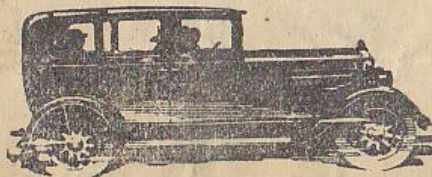
GLOUCESTER

At Kingsholm Ground.

BUY BRITISH AND BE PROUD OF IT.

Buy MORRIS

and Benefit



The Easiest of Easy Payments

**Top Value for Used Cars in
Part Payment.**

WICLIFFE MOTOR CO. LTD.,

Morris House, Bath Rd,
Tel. 3722.

CHELTENHAM SPA.

Western Garage, Cainscross Rd, Tel 268
and Russell St, Tel. 388 and 389.

STROUD.

PUBLISHED BY THE GLOUCESTER RUGBY SUPPORTERS CLUB.
Hon. Sec. and Programme Editor, 2, Parliament Street, Gloucester.

ASK FOR
HARDING & CO.'S
PURE MINERAL WATERS
— AND —
STONE GINGER BEER.

Awarded Prize Medals and Diplomas at the Brewers'
and Mineral Water International Exhibition, London.



Factories—
Barton Street,
Gloucester
and
Wellington Passage, High St.,
Cheltenham.

MITCHELLS
AND BUTLERS
ALES & STOUTS

For very best Enlargements of your
Holiday Snaps—take your FILMS to

WALWIN KODAK
Specialist

DISPENSING AND PHOTO CHEMIST,
SOUTHGATE ST., GLOUCESTER.

Telephone 2844.

RUNNING COMMENT

To-day Gloucester conclude their home fixture list of the season 1934/35 with the attractive fixture against Sale. Under the leadership of Fred Wadley the 'Cherry and Whites' have had a fairly successful season ; having played (before the Easter programme) 36 games, of which 23 have been won and 13 lost, scoring 520 points to 187 against, a record favourably compared with any of the leading clubs in England or Wales. No doubt the outstanding performances have been in defeating Bristol, Richmond, and Newport (away). The football generally served up, although not reaching the high standard of last season when the club celebrated their Diamond Jubilee year, has been generally good. Some delightful rugby at times has been seen, with perhaps the Leicester, R.A.F. and Torquay games at Kingsholm standing out. The open play of the team was a constant source of delight. The spirit displayed in the games has never been excelled, and the side has generally played as a team. It was a delight to our supporters when H. Boughton was awarded his International Cap against Wales, and later to know his play justified his selection against Ireland and Scotland. Unfortunately Boughton has suffered from a knee injury and recently from lumbago, we have missed him and trust he will soon be well again. The team, especially the threequarters, have been handicapped by injuries. J. C. Brooks and C. C. Tanner being notable examples. On the whole one can look back on a most enjoyable season, and the thanks of the Supporters' Club are due to the Gloucester Club for the privilege of issuing this programme, which I hope has served the useful purpose of further stimulating ruggier in the City.

OUR VISITORS

To-day Gloucester conclude their home holiday programme against Sale, who are the oldest rugby club in the North. Founded in 1861, the club is situated in Cheshire, and within six miles of Manchester. Owing twenty acres of playing fields, which comprises of four playing pitches ; and with a membership of over 500 (including over 200 playing members), one can fully realize why they are able to command a side able to hold its own against any first-class club in England or Wales. Although not too well known in the West, Sale oppose a great many first-class clubs, and their record speaks for itself. They have won 22 games and lost 10, and scored 646 points to 268. They played a drawn game against Llanelly, and on Saturday, April 13th gained a splendid victory over the strong Coventry side by 19 pts. to 5. Unfortunately our visitors are unable to command full strength. The captain, H. S. Sever, who has played in International Trial Games, and W. Wooller, the brilliant young Welsh International centre, are both touring with the Barbarians ; and Claude Davey, their other Welsh International centre-threequarter, is unable to make the journey owing to family reasons. W. C. Church (centre) played for the Royal Air Force against both the Army and Navy, and appeared at Kingsholm against the City for the R.A.F. recently. Although considerably weakened among the backs, Sale are able to call on a fairly good pack of forwards. G. D. Shaw, who is a splendid loose forward, has appeared in this season's Scottish Trials and was reserve for Scotland. R. U. Reynolds, another clever forward, has played for Cheshire County. W. F. Scott, to-day's skipper, is an old English Trial player and holds the remarkable record of 55 Cheshire Caps. In opposing the City to-day the Cheshire Club concludes their season's programme. In giving our visitors from the North a real

LEA & CO. (Gloucester Ltd.)
 Complete House Furnishers,
 NORTHGATE STREET and ALDATE STREET,
 GLOUCESTER.

Three-Piece Suites and Bedroom
 Suites a Speciality.

Call and Inspect the Largest Stock in the County.

Luncheons, Teas, Chops and Steaks

Afternoon
 Teas.

URCH'S RESTAURANT
 14, SOUTHGATE ST.,
 GLOUCESTER.

Speciality
 Fish Teas.

MERCERS' HALL for all kinds of RECEPTIONS.
 WINES AND ALES. GARAGES Tel. 3210

Travel all together
 in comfort—

HIRE A

"Bristol"

COACH OR BUS

All-weather Coaches and Saloon Omnibuses always available for private hire for Football Matches, Whist Drives, Dances, Concerts, etc. No contract too big; no job too small.

Apply to: Mr. H. J. BALCHIN
 THE BRISTOL TRAMWAYS
 AND CARRIAGE CO., LTD.,
 LONDON ROAD GARAGE.
 Telephone No. 2291.

GLOUCESTER'S BIGGEST AND BEST TALKIE HOUSE
THE HIPPODROME, Eastgate (See Below)

SALE.

Colours—Blue and White.

Right Wing: J. A. Bleasdale [14] Full Back: A. P. Pastore [15] Left Wing: J. C. Noden [11]
 Right Centre: W. C. Church [13] Left Centre: J. S. Standerwick [12]
 Stand-off Half: P. G. Street [10] Scrum Half: J. Parsons [9]
 Forwards: R. U. Reynolds [1] T. P. Hough [2] F. S. Crossland [3] H. D. Morton [4]
 G. D. Shaw [5] W. F. Scott, Capt. [6] H. J. Shorman [7] J. C. Hough [8]

Referee:
 Major BEGBIE
 (London)

International



Kick-Off
 3-15 P.M.

Forwards: F. Wadley, (Capt.) [8] A. D. Carpenter [9] C. Harris [10] H. O. Ricketts [11]
 J. A'Bear [12] Ken Smith [13] A. Welshman [14] Ivor Williams [15]
 Scrum Half: K. Voyce [7] Stand-off Half: Don Meadows [6]
 Left Centre: F. G. Edwards [4] Right Centre: Roy James [3]
 Left Wing: J. C. Haines [5] Right Wing: R. E. Hook [2]

Full Back: T. Stephens [1]

GLOUCESTER

Colours—Cherry and White

Continuous Daily—1-30 till 10-30

Leslie Banks and Edna Best in **THE MAN WHO KNEW TOO MUCH** also Louise Dresser in A Girl of the Limberlost

All the Value
 is in

**HERCULES
 BROWN
 BREAD**

Friday, Metford & Co., Ltd
 Millers Gloucester.

FATHER WILLIAM scores a 'try'— He's getting
YOUNGER by the bye!

WILLIAM YOUNGER'S
Scotch Ale
 BREWED IN EDINBURGH



Rub IN
ELLIMAN'S
 Rub OUT Pain

Invaluable for Strains, Stiffness, Muscle Tears and other injuries.
 AT ALL CHEMISTS AND STORES, 1/3, 2/- and 4/-
 ELLIMAN, SONS & Co., Ltd., Embrocation Manufacturers, Slough, England.

OUR VISITORS—continued

hearty welcome to the City, we hope to see another spectacular game and then may the best team win. Sale's only previous visit to Kingsholm was in season 1932/3 and a splendid contested game resulted in the Cherry and Whites winning by 18 points to 7. On Saturday last Sale opposed the strong Bedford side.

CLUB NOTES.

Gloucester are among the 100 or so entries for the Middlesex "seven-a-side" Rugby competition, the main proceeds will be devoted, as usual, to the Middlesex Hospital Cancer Research Fund. Since its inception ten years ago the competition has yielded over £11,000 to Charity, our local Infirmary also benefits. As a result of the draw, Gloucester (who are exempted from the earlier rounds) will meet the winners of the fourth round tie between Old Merchant Taylors and the Harlequins, at 2-10 p.m. on Saturday, April 27th. It is interesting to note that Headingley and Gloucester are the only provincial clubs invited to take part in the tournament.

J. C. Brooks, the City Vice-Captain, is away on a visit to North Africa and will not be available for the remaining games.

C. C. Tanner is on holiday in Algiers, but hopes to return in time to assist the Cherry and Whites in their "seven-a-side" games if required.

C. Fifield and Harold Boughton are still unfit to play and are not likely to play again this season.

T. Price, the promising City forward, is also unfit, having recently suffered from an attack of the "Flu."

To-morrow, Easter Tuesday, Gloucester conclude the season's programme by opposing Lydney (away). The Tinplaters always rise to the occasion in these next-door neighbour games and with every possibility of a good sporting and close game, it is hoped a good crowd will attend. Kick-off 4 p.m.

To-morrow, Easter Tuesday (kick-off 3-15 p.m.) the Final of the North Gloucester Combination Senior Competition will take place at Kingsholm between Gordon League and Tredworth. It is hoped that a good crowd will be present and with the prospects of a good game, may the best team win.

OUR CAPTAIN.

Our Captain—Fred Wadley is retiring at the end of the season and has rendered splendid service to the City club. He first appeared for the "A" Team as a centre three-quarter many years ago, but only played a few games. As he developed in physique he played as a forward for the well-known West End and Gordon League Clubs. He has been in the first side for eight seasons and for the last three as Captain. A hard working and sterling player, always in the thick of the fray and fearless in going down on the ball in a forward rush by the opposing side. As Captain, his pleasing personality and sporting qualities has gained for him the respect and admiration of his colleagues and opponents. He has played for the County on 18 occasions. May the memory of his association with the Rugby game be a pleasing reflection in the years that are yet to be.

GREAT WESTERN RAILWAY

ATTRACTIVE EXCURSIONS

Tuesday, April 23rd — (Lydney v. Gloucester)

(KICK-OFF 4-0 p.m.)

Gloucester depart 1-0 or 2-15 p.m. to Lydney 1/6



MONDAY, MAY 6th



H.M. THE KING'S SILVER JUBILEE

Gloucester depart 5-0 p.m. to

LONDON 5/-

For full particulars see Company's handbills.

Paddington Station.

JAMES MILNE, General Manager

FOOTBALL AT KINGSHOLM EASTER TUESDAY.

North Gloucester Combination CUP FINAL

Gordon League v. Tredworth

KICK-OFF 3-15 p.m.

Come and Support the Locals!

Gloucester and Cheltenham Greyhound Track

(Under N.G.R.C. RULES).

After the Match **WIN** or **LOSE**

See the Racing at Longleavens

The Biggest **DRAW** in Sporting Circles.

RACING every Monday, Thursday

and Saturday at 7-30 p.m.

Admission - 1/3 and 2/6

Gloucester Rugby Football Club, Season 1934-35

1934				1935			
September				January			
Rslt	Points For	Agst		Rslt	Points For	Agst	
8	W	22	6	5	W	29	5
15	W	20	10	12	W	8	3
22	W	37	11	19	L	3	8
29	W	13	7	26	L	8	18
October				February			
6	W	22	5	2	W	10	0
13	L	0	3	9	W	9	6
20	W	9	6	16	L	0	3
27	W	13	3	23	W	38	8
November				March			
3	W	24	8	2	W	25	3
10	L	0	13	9	L	0	9
15	W	18	9	16	L	8	11
17	W	17	0	23	W	32	0
24	W	49	11	30	L	10	31
29	L	8	12	April			
December				6	W	10	3
1	W	8	3	13	L	9	18
8	W	5	3	15	L	5	11
15	W	16	8	20	L		
22	L	5	6	22	L		
26	W	26	5	23	L		
29	L	0	27	23	L		

**For Cleaning, Dyeing, Laundering,
Shirt and Collar Dressing**

SEND TO—

PARKERS

Eastgate Street
Barton Gates
105, Northgate Street

GLOUCESTER

Tel. 3212;

Branches throughout the County.

SCORERS TO DATE

F. S. Edwards ... 21 Tries	P. Hordern ... 3 Tries
I. Williams ... 14 Tries	Don Meadows ... 3 Tries
Roy James ... 12 Tries	R. Hook ... 3 Tries
C. C. Tanner ... 10 Tries	L. Morris ... 2 Tries
L. Franklin ... 8 Tries	H. J. Hyett ... 2 Tries
L. C. Watkins ... 6 Tries	T. Pugsley ... 2 Tries
C. Fifield ... 5 Tries	J. A'Bear ... 1 Try
J. C. Brooks ... 5 Tries	K. Smith ... 1 Try
A. Welshman ... 4 Tries	A. Carpenter ... 1 Try
F. Wadley ... 3 Tries	W. V. Sheppard ... 1 Try
T. Stephens 2 Converted Goals	J. C. Haines ... 1 Try
H. Boughton 44 converted goals, 10 penalty goals, 2 drop goals.	
Don Meadows 4 converted goals, 6 drop goals.	
Roy James 3 drop goals.	
T. Pugsley 2 converted goals	
R. Hook 2 Converted Goals	
G. W. Parker 1 Converted Goal	