

Gloucester Rugby Football Club.

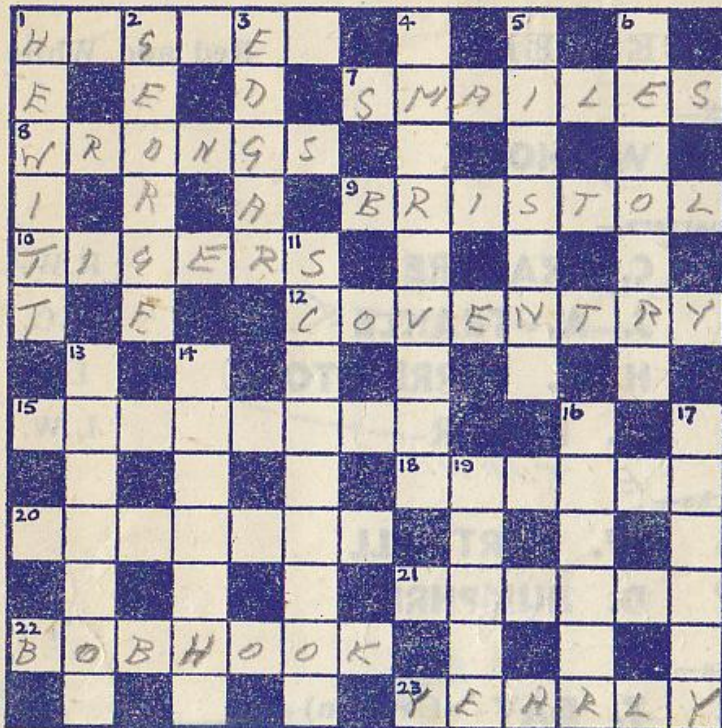
OFFICIAL PROGRAMME, Price 3d.

GLoucester v. COVENTRY

KINGSHOLM, GLOUCESTER.

SATURDAY, APRIL 28th, 1951

Crossword Puzzle. No. 7, by Arthur Russell



For Solutions see Back Page.

ACROSS

- 1—Here the City Club's chairman makes a belated but welcome
 7—R.A.F. full-back at Kingsholm last month. appearance.
 8—Harms, and may result in penalty kicks.
 9—Old rivals who did not beat Gloucester at all this season.
 10—while these defeated the City twice.
 12—Here we welcome our visitors —.
 15—who have produced many grand ones.
 18—Have Gloucester players had their fill of these? (A slippery clue!)
 20—Attribute (looks like a writer). 21—Advertises City matches often.
 22—Former City wing, and brother of well-known player of today
 (2 words: 3 and 4).
 23—Most of Gloucester's opponent's, like Xmas, come this often to
 Kingsholm.

DOWN

- 1—"The wit" (anag.)—of a Coventry international?
 2—First name of a City forward (not from a South Coast town,
 3—Boy's name. 4—Make do on the spur of the moment. however).
 5—If a forward is this, the pack is usually outweighed.
 6—Many famous players could doubtless write their own interesting
 ones.
 11—Hardly needed for a rigger game, even with an overwhelming victory
 13—Such attacks would wear down any team's defence eventually.
 14—Dark-complexioned (there's an art in this).
 16—Neither masculine nor feminine.
 17—When passes go this, chances are lost.
 19—Gloucester forwards invariably shine here as well as in the scrums.

HOWES, I FOR WILLIAMS
 ON WEDNESDAY, 23RD MAY, 1951.
 Printed Particulars with Plan from the
 HATHORNSING - Philip, Bathon, 2nd
 and a Great Improver, Kestrel, 230
 HATHORNSING - Philip, Bathon, 2nd
 and a Great Improver, Kestrel, 230
 HATHORNSING - Philip, Bathon, 2nd
 and a Great Improver, Kestrel, 230
 HATHORNSING - Philip, Bathon, 2nd
 and a Great Improver, Kestrel, 230

COMPLETE YOUR DAY'S PLEASURE by visiting
GLOUCESTER HIPPODROME
 SEE BELOW

GLOUCESTER Red and White

Full Back—
1 W. HOOK

Three-quarters—
2 C. CRABTREE R.W.
3 J. A. TEAKLE R.C.
4 H. L. TERRINGTON L.C.
5 M. BAKER L.W.
E. TURNER.

Half Backs—
6 W. CARTMELL
7 D. HUMPHRIS

Forwards—
8 T. DAY (Captain)
9 R. CHAMBERLAYNE
10 R. PARRY
11 H. G. WELLS
12 G. HASTINGS
14 D. IBBOTSON
15 R. HODGE
16 A. G. HUDSON

The Referee to-day is
Mr. V. Davey
 (Monmouth)

KICK-OFF
3-15 p.m.

COVENTRY Dark Blue and Navy

Full Back—
1 E. D. HEWITT

Three-quarters—
2 H. F. GREASLEY L.W.
3 B. J. CLARKE L.C.
4 I. PREECE R.C.
5 B. TOMKINS R.W.

Half Backs—
6 J. HALFORD Stand-off
7 N. J. STOCK (Capt.) Serum

Forwards—
8 H. WALKER
9 E. ROBINSON
10 G. H. TURNBULL
11 D. G. NAYLOR
12 N. R. JONES
13 D. HEATH
14 S. J. ADKINS
15 R. F. BATSTONE

Bette Davis - Anne Baxter
 George Sanders - Celeste Holm
ALL ABOUT EVE (a)
 ALSO
MARCH OF TIME | **THE MAGIC SLIPPER**

Robert Cummings - Joan Caulfield
THE GIRL OF THE YEAR (a)
 Warner Baxter
STATE PENITENTIARY (a)

NEXT WEEK

NOTES

The games between Gloucester and Coventry have been unfortunate in the last few years in that in 1946/7 the matches at Coventry had to be cancelled, while in 1949/50 and 1950/1 the International Trial caused the game to be transferred from Gloucester to Coventry and the scores have been—

1947/8	At Gloucester	20	—	6
1948/9	At Coventry	3	—	5
1949/50	At Coventry	0	—	11

Coventry's record is slightly better than Gloucester's, being—Played 38, Won 24, Drawn 4, Lost 10. Points for 382, against 198.

Against this Gloucester's record is—Played 44, Won 22, Drawn 6, Lost 16. Points for 359, against 248.

The Trustees of the GLOUCESTER RUGBY MEMORIAL FUND again thank all purchasers of these programmes for their help during the season. Efforts to obtain a suitable ground within the City are never relaxed and meanwhile the Fund is being steadily increased by your efforts, against the time when success will attend their efforts.

The collection to-day is the annual one for the St. John Ambulance Brigade (City of Gloucester Division).

SOLUTION TO CROSSWORD No. 6.

ACROSS. 1—Newport defeat; 8—Quarts; 9—Swerve; 10—Lloyd; 11—Burnett; 13—Fend
14—Casual visitor; 17—Seat; 18—Shorten; 19—Voyce; 23—Austin; 24—Sutton
25—Threequarters.

DOWN. 2—Equal; 3—Parry; 4—Rest; 5—Edwards; 6—Earnest; 7—Treat. 11—Bevan
12—Unit; 13—Flee; 15—Sponsor; 16—Astride; 18—Smart; 20—Octet. 21—Choir. 22—Asia.

SOLUTION TO CROSSWORD No. 7.

ACROSS. 1—Hughes; 7—Smailes; 8—Wrongs; 9—Bristol; 10—Tigers; 12—Coventry
15—Forwards; 18—Elvers; 20—Ascribe; 21—Poster; 22—Bob Hook; 23—Yearly.

DOWN. 1—Hewitt; 2—George; 3—Edgar; 4—Improvise; 5—Missing; 6—Memoirs
11—Score-book; 13—Non-stop; 14—Swarthy; 16—Neuter; 17—Astray; 19—Loose.

Opinions as to the popularity of these Puzzles in the programmes would be welcome from patrons. Please address c/o Hudson & Co., Northgate Street, marking envelopes "PROGRAMMES." Replies cannot be sent but these opinions would be useful for future arrangements.

1950				1951			
Sep. 9	Lydney	H 3 8	Jan. 6	London Scottish	H 0 8
" 14	Stroud (Thurs.)	H 23 6	" 11	Army (Thurs.)	H 11 11
" 16	Moseley	H 14 5	" 13	Leicester	H 3 8
" 23	Bristol	A 9 3	" 20	Wasps	A 3 0
" 28	Blackheath (Thurs.)	H 14 8	" 27	Bristol	A 0 0
" 30	Newport	A 0 6	Feb. 3	United Services	A 0 0
Oct. 5	Cheltenham (Thurs.)	H 0 0	" 10	Bath	A 3 8
" 7	Bedford	H 8 0	" 17	Swansea	A 6 9
" 14	Old Paulines	H 22 3	" 24	Cardiff	H 3 6
" 21	Exeter	H 14 0	Mar. 1	Oxford Univ. (Thurs.)	H 12 8
" 28	Clifton	A 5 0	" 3	Northampton	H 21 0
	(County Match, Somerset, at Kingsholm)			" 10	R.A.F.	H 8 0
Nov. 4	Leicester	A 14 19	" 17	Guys Hospital	H 25 8
" 11	Moseley	A 3 8	" 24	(E.S.) London Welsh	H 10 8
" 18	Llanely	H 5 3	" 26	(E.M.) Sale	H 6 11
" 25	Birkenhead Park	H 9 6	" 27	(E.T.) Lydney	A 0 0
Dec. 2	Cardiff	A 9 16	" 31	Llanely	A 3 15
" 9	Old Blues	H 22 0	(Schools v. Wales, at Kingsholm)			
" 16	Coventry	A — —	Apr. 5	Stroud (Thurs.)	H 3 0
" 23	Bath	H 27 3	" 7	Harlequins	H 3 3
" 26	O.M.T.'s	H 1 0	" 11	Cheltenham (Wed.)	A 0 3
" 27	Univ. Ath. Union	H 8 6	" 14	Newport	H 3 11
" 30	Richmond	A — —	" 21	Devonport Services	A 0 12
				" 23	Penzance and Newlyn	A 8 6
				" 24	Teignmouth	A 8 13
				" 28	Coventry	H — —