

RUGBY FOOTBALL
COUNTY CHAMPIONSHIP FINAL



GLOUCESTERSHIRE
v.
WARWICKSHIRE



AT RUGBY MEMORIAL GROUND, BRISTOL
SATURDAY, APRIL 11th, 1959

KICK-OFF 3.15 P.M.

OFFICIAL 6d. PROGRAMME

GLOUCESTERSHIRE

Colour—RED

1. I. SHEEN (Gloucester)
- ‡ 2. M. G. ELLERY (Bristol)
- ‡ 3. L. D. WATTS (Bristol)
4. J. RADFORD (Bristol)
5. T. WYNNE-JONES (Bristol)
6. A. HOLDER (Gloucester)
- ‡ 7. M. BOOTH (Gloucester)
8. R. FOWKE (Stroud)
- ‡ 9. J. THORNE (Bristol)
- *10. G. HASTINGS (Gloucester)
- ‡11. D. NEATE (Bristol)
12. B. GREEN (Gloucester)
13. R. WHYTE (Harlequins)
- ‡14. G. CRIPPS (Bristol)
15. T. BASE (Bristol)

Referee: Dr. N. M. Parkes (Kent)

Full Backs

Three-quarters

Right Wing

Right Centre

Left Centre

Left Wing

Half Backs

Stand off

Scrum Half

Forwards

Prop

Hooker

Prop

Second Row

Second Row

Wing

Lock

Wing

* International

‡ Trialist

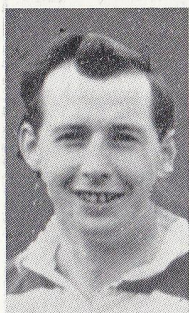
WARWICKSHIRE

Colour—WHITE

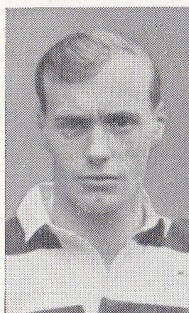
1. D. R. COOK (Coventry)
- * 2. P. B. JACKSON (Coventry)
3. G. P. D. MORRIS (Coventry)
4. J. A. PARGETTER (Moseley)
5. R. MELVILLE (Coventry)
6. C. A. HEWITT (Cardiff)
7. G. COLE (Coventry)
- ‡ 8. P. JUDD (Coventry) **Captain**
- * 9. H. GODWIN (Coventry)
- ‡10. M. McLEAN (Coventry)
- ‡11. J. PRICE (Coventry)
12. T. A. PARGETTER (Moseley)
13. S. J. PURDY (Rugby)
- ‡14. J. GARDINER (Coventry)
15. R. F. BATSTONE (Coventry)

Touch Judges: J. V. Smith and G. Hutt

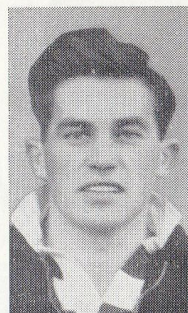
GLOUCESTERSHIRE PEN PICTURES



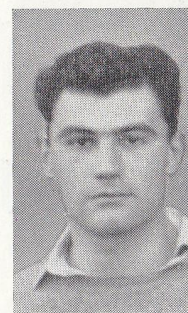
I. Sheen



M. G. Ellery



L. D. Watts



J. Radford

1. I. SHEEN (Gloucester)

Born in Wales. Played for Abertillery and Ebbw Vale before moving to Gloucester, where he played regularly at stand-off and centre as well as full-back. Has been reserve for Welsh trials.

2. M. G. ELLERY (Bristol)

A track sprinter in the summer months, is obviously a very fast wing threequarter. Played in the first England trial this season. Is at present working in the Hull branch of his firm. Is the leading try-scorer in the very successful Bristol team.

3. L. D. WATTS (Bristol)

An Oxford "blue" in his third year and just missed a cricket "blue" last year, having opened for most of the season. Plays for Gloucester II. Recently shown a return to form in the centre after illness.

4. J. RADFORD (Bristol)

Is the club's most regular centre this season. Always at his best when with Watts as partner. Thrustful straight runner with a powerful hand-off and a deceptive side-step.

5. T. WYNNE-JONES (Bristol)

Captain of Bristol's second string, but playing his second full season as left wing for Gloucestershire. A clever footballer, who plays mostly at stand-off. Has a good pair of hands.

6. A. HOLDER (Gloucester)

Plays for the Civil Service team in representative rugby. Vice-captain of Gloucester, and a graduate of local Combination Rugby, being one of three members of the Spartan's Club in the side. Others are his scrum-half partner, Booth, and prop Fowke.

7. M. BOOTH (Gloucester)

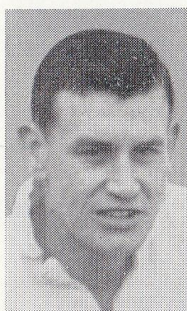
Just 20, but already an experienced campaigner. Played in the first England trial this season. Product of Sir Thomas Rich's School, Gloucester. Has the second best voice in the side.

8. R. FOWKE (Stroud)

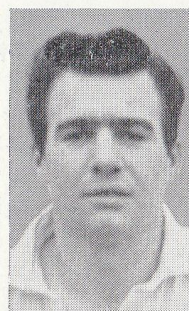
Reserve for England trials this season, and many think will be "there" perhaps next year. Possessor of the best voice in the team! Fast, mobile and strong.



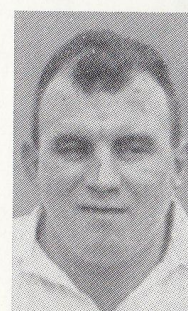
T. Wynne-Jones



A. Holder



M. Booth



R. Fowke



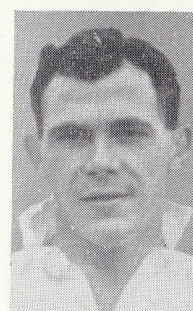
J. Thorne



G. Hastings



D. Neate



B. Green

9. J. THORNE (Bristol)

One of the characters in the side, played in England trials last season. Many think he should be there in the England team. Charges around like a rhino in the loose; strikes like an adder in the tight.

10. G. HASTINGS (Gloucester)

At 34, still one of the best prop forwards in the game. He has been capped 13 times for England, and has also played for the Barbarians. Product of Cheltenham G.S. Now lives in Cardiff. Place-kicker of note, too.

11. D. NEATE (Bristol)

An expert in the line-out, who has had England trials. Handles the ball better than many threequarters in open play. A product of a local Bristol club, Avonmouth Old Boys.

12. B. GREEN (Gloucester)

Another line-out expert who is considered in the west to have been most unfortunate not to gain a trial. Educated at Crypt G.S., Gloucester, and Bristol University. Also played for Old Cryptians.

13. R. WHYTE (Harlequins)

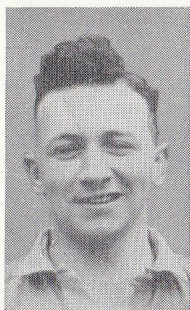
Former playing member of Clifton, left three seasons ago for Harlequins for whom he has played in practically every position. First "capped" by Gloucestershire as reserve scrum-half; in 1950 played stand-off against Glamorgan. Has since played for the county at prop, No. 8, and now on blind side. Recently played full back for Harlequins.

14. G. CRIPPS (Bristol)

Vice-captain of the successful Bristol side and captain in all but one match for Gloucestershire. Second player in the side over 30. Has had England trials. Probably the leading points-scorer in first-class Rugby today. Has over 125 for Bristol, and 25 for the county.

15. T. BASE (Bristol)

Another versatile player who gained his first county "cap" at scrum-half, then played for Bristol in the centre before being converted to wing forward. Fast breaking and a fine tackler, his determined backing up has brought him a pack of tries. Formerly with Old Cothamians.



R. Whyte



G. Cripps



T. Base

OUR WELCOME

We extend a very hearty welcome to Warwickshire on the occasion of their first visit to us at Bristol.

We last met them when they visited us at Gloucester on March 14th, 1931. On this occasion we were the victors by 10 pts. to 9 pts. in that Final.

HOW THEY REACHED THE FINAL

GLOUCESTERSHIRE

Beat CORNWALL	8-6
Beat DEVON	11-3
Lost SOMERSET	6-13
Beat SOMERSET (Play-off) ...	12-6
Beat DORSET and WILTS. (Quarter-final)	18-0
Drew DURHAM	0-0
Beat DURHAM	8-6

Total..... 63-34

WARWICKSHIRE

Beat NORTH MIDLANDS ...	17-14
Beat EAST MIDLANDS.....	12-3
Lost LEICESTERSHIRE	6-9
Beat NOTTS. Lincs. DERBYS.	25-3
Beat MIDDLESEX	8-3

Total..... 68-32

GLOUCESTERSHIRE RECORDS

SEMI-FINALS

1890-91 ..	Lancashire (Lost 4 goals to 2 tries)
1901-02 ..	Middlesex (Won 13-10)
1909-10 ..	Kent (Won 6-3)
1912-13 ..	Midland Counties (Won 6-0)
1919-20 ..	East Midlands (Won 16-11)
1920-21 ..	Surrey (Won 21-3)
1921-22 ..	Surrey (Won 30-0)
1924-25 ..	Middlesex (Won 10-9)
1925-26 ..	Hampshire (Lost 6-16)
1929-30 ..	Middlesex (Won 12-6)
1930-31 ..	Hampshire (Won 9-6)
1931-32 ..	Hampshire (Won 9-6)
1933-34 ..	Hampshire (Won 10-9)
1936-37 ..	Kent (Won 7-5)
1946-47 ..	Middlesex (Won 24-17)
1947-48 ..	Eastern Counties (Lost 10-14)
1948-49 ..	Middlesex (Won 10-0)
1950-51 ..	East Midlands (Lost 0-6)
1953-54 ..	Middlesex (Lost 6-9)

FINALS

..	Durham (Lost 3-9)
..	Yorkshire (Won 23-0)
..	Cumberland (Won 14-3)
..	Yorkshire (Won 27-3)
..	Leicester (Won 31-4)
..	North Midlands (Won 19-0)
..	Leicestershire (Lost 6-14)
..	Lancashire (Won 13-7)
..	Warwickshire (Won 10-9)
..	Durham (Won 9-3)
..	East Midlands (Lost 0-10)
..	East Midlands (Won 5-0)
..	Lancashire (Lost 0-14)
..	Lancashire (Lost 3-9)