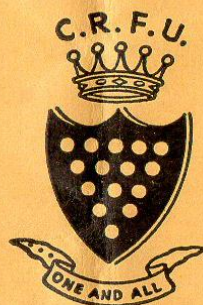


CORNWALL RUGBY FOOTBALL UNION



Cornwall

v.

Gloucestershire

at

THE RECREATION GROUND - REDRUTH

On SATURDAY, OCTOBER 24th, 1959

Kick-off 3 p.m.

OFFICIAL PROGRAMME - 6d.

CORNWALL

- (1) **G. BATE** (Penryn)
- (2) **J. COBNER** (Penryn)
- (3) **G. LUKE** (Penzance-Newlyn)
- (4) **R. HOSEN** (Northampton)
- (5) **T. STEVENSON** (Penzance-Newlyn)
- (6) **H. STEVENS** (Redruth)
- (7) ***P. J. B. MICHELL** (Penzance-Newlyn)
- (8) **D. LAWRENCE** (Redruth)
- (9) **K. ABRAHAMS** (Redruth)
- (10) **C. R. JOHNS** (Redruth)
- (11) **A. WILLIAMS** (Penzance-Newlyn)
- (12) **G. HARRIS** (Camborne)
- (13) **P. McGOVAN** (Redruth and R.A.F.)
- (14) **T. THOMAS** (Rosslyn Park)
- (15) **N. FIVAZ** (Camborne S.O.M.)

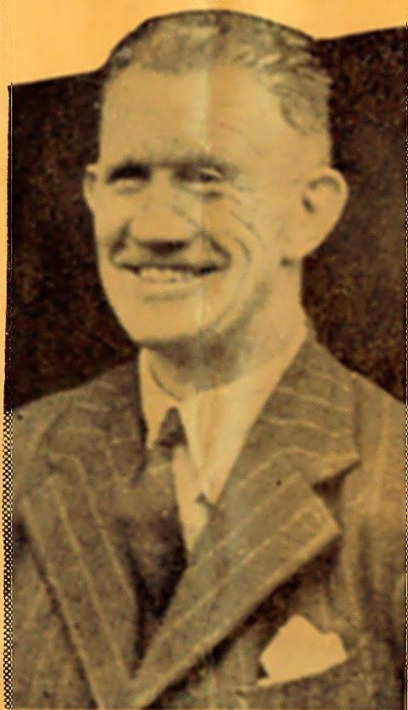
GLOUCESTERSHIRE

- Full Back (1) **I. SHEEN** (Gloucester)
- (Right) Wing (Left) (2) **T. W. JONES** (Bristol)
- (Right) Centre (Left) (3) **J. RADFORD** (Bristol)
- (Left) Centre (Right) (4) **L. D. WATTS** (Bristol)
- (Left) Wing (Right) (5) **M. G. ELLERY** (Bristol)
- Stand-off Half (6) **A. HOLDER** (Gloucester)
- Scrum Half (7) **M. BOOTH** (Gloucester)
- Front Row (8) **G. W. HASTINGS** (Gloucester)
- (9) **J. D. THORNE** (Bristol)
- (10) **R. FOWKE** (Stroud)
- Second Row (11) **D. E. J. WATT** (Bristol)
- (12) **D. W. NEATE** (Bristol)
- Back Row (13) **P. FORD** (Gloucester)
- (14) ***G. CRIPPS** (Bristol)
- (15) **T. E. BASE** (Bristol)

Touch Judges : G. L. RICHES and J. V. SMITH.

Referee : J. C. HATCH (Middlesex)

*Denotes Captain



“ TOM VOYCE ”

MR. A. T. VOYCE, Senior Vice-President of the Rugby Football Union, is one of our visitors today. “Tom,” as he is familiarly known to us Rugger folk, is always welcomed in Cornwall. We take this opportunity of paying our tribute and offering our congratulations to him on being President-elect of the Rugby Union, and look forward with keen anticipation to his year of office as President. Mr. Voyce has had many years of experience in Rugby Football, commencing

when, as a schoolboy, he played at stand-off-half earning an English Cap. He played some games for a Gloucester local club and then, at the age of 16, joined the Army. He played for the Gloucestershire Regiment and for the Army, as a forward, on return ; at Sandhurst he played for the " Mother Country " XV.

The War being over, he settled in Gloucester, and played for the Town side. During that first season, after his return, he gained Club, County and English Caps, and was a member of the County Championship side. He played in 28 games for his County of Gloucestershire and gained 27 consecutive English Caps. He is credited with being one of the very early exponents of loose (wing) forward play, but as an attacker, *not* as a defender.

For two seasons (1933-34-35) he was President of Gloucestershire, and is now one of its three Life Members. Since 1931 he has continuously represented Gloucestershire on the Rugby Union Committee.

He sits on the Executive and Council of the National Playing Fields Association and is Deputy Chairman of the Gloucestershire area. There are many clubs—not all of them in Gloucestershire—who owe " Tom " a very great debt of gratitude for assistance and guidance given them by him in connection with their grounds. It is no exaggeration to say that a number of clubs would not now be proud possessors of their grounds but for his help. He has a knack of getting done in a few days work which takes others months.

THE TEAMS

THE Cornwall Team did so well against Devon that few changes were expected for to-day's match with Gloucestershire, and such has proved to be the case. The pack gave entire satisfaction and has been retained *en bloc*. The only changes made by the Selection Committee have been the moving of Harold Stevens (Redruth) from full back to outside-half for Richard Sharp, who has gone to Oxford University, and Tony Stevenson (Penzance-Newlyn) to replace Jimmy Glover, who has also returned to Oxford. The vacancy at full back, caused by the removal of Harold Stevens, is given to Graham Bate (Penryn), who has been playing well for his club.

Gloucestershire have chosen no fewer than nine players from the successful Bristol side, and Gloucester supply five others. Six of the side have played in England Trial matches. Both Bristol and Gloucester Clubs are going strongly at present, and combination should be a strong point with the County side.

We always find Gloucestershire the hardest side to beat in the South-West Group, and to-day's match appears to be no exception. Gloucestershire are never beaten until the final whistle goes. They have pulled more games out of the fire in the last few minutes than any other county side.

But whatever happens, we always get a good game of Rugger with Gloucestershire, and confidently look forward to the same to-day.