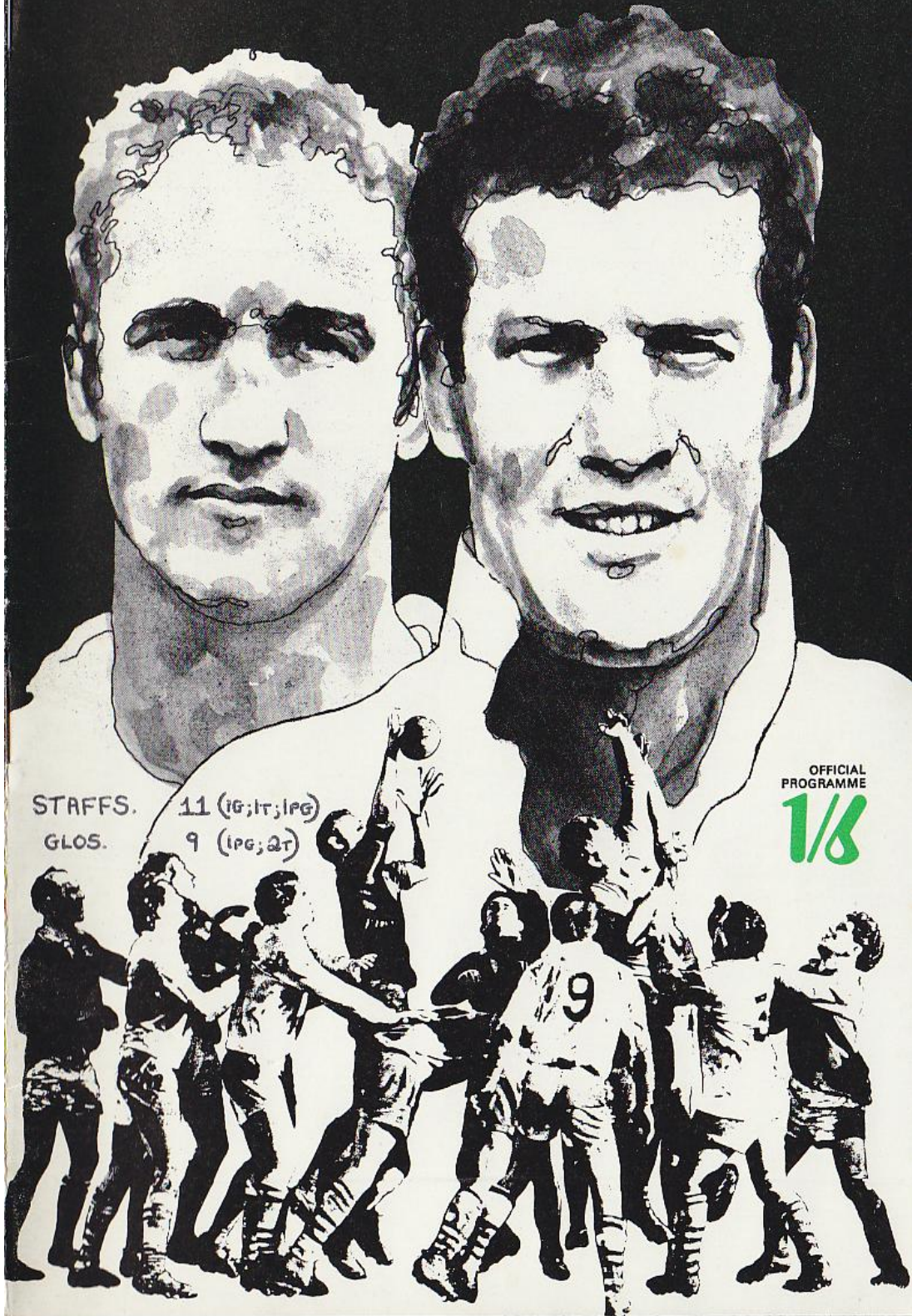


STAFFORDSHIRE v GLOUCESTERSHIRE COUNTY CHAMPIONSHIP FINAL

RUGBY FOOTBALL UNION BURTON SATURDAY 14th MARCH 1970 KICK-OFF 3.00 pm



STAFFS. 11 (16;17;18)
GLOS. 9 (18;27)

OFFICIAL
PROGRAMME
1/8

STAFFORDSHIRE ♥ GLOUCESTERSHIRE

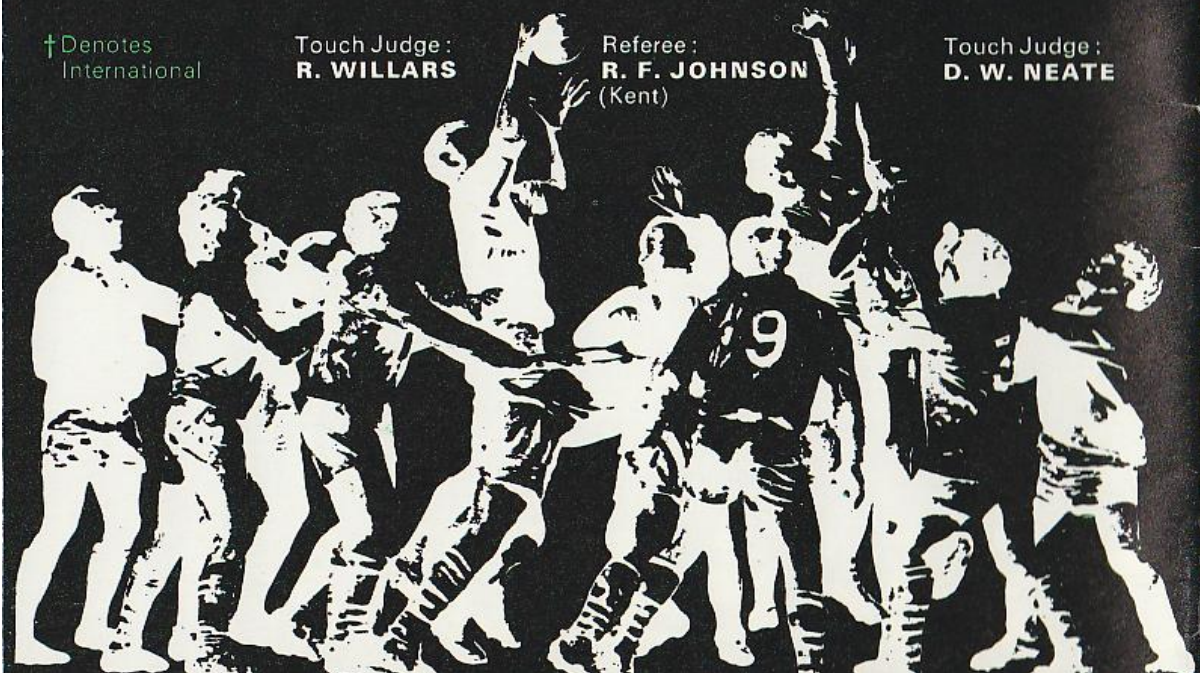
Moseley, S. A. DOBLE	15	P. M. KNIGHT , St. Luke's College
Moseley, K. HATTER	14	J. L. BERRY , Cheltenham
Walsall, T. RINGER	13	J. A. BAYLISS , Gloucester
Sale, R. H. DOWNEND	12	R. E. WHITE , Cheltenham
Stafford, A. W. HANCOCK †	11	M. R. COLLINS , Bristol
Moseley, C. W. McFADYEAN †	10	J. T. HOPSON , Gloucester
Moseley, J. G. WEBSTER	9	J. F. MORRIS , Lydney
Moseley, S. G. WALKER	1	A. J. ROGERS , Bristol
Moseley, D. E. LANE	2	† J. V. PULLIN , Bristol
Birkenhead Park, D. I. BUTTERY	3	† B. A. DOVEY , Bristol
Harlequins (Capt.), A. M. DAVIS †	4	A. BRINN , Gloucester
Moseley, S. A. TAYLOR	5	J. S. JARRETT , Gloucester
Manchester, E. T. ROBINSON	6	R. C. HANNAFORD , Rosslyn Park
Coventry, L. J. ROLINSON	8	† D. M. ROLLITT (Capt), Bristol
Stoke, A. COPELAND	7	R. SMITH , Gloucester

† Denotes
International

Touch Judge:
R. WILLARS

Referee:
R. F. JOHNSON
(Kent)

Touch Judge:
D. W. NEATE



STAFFORDSHIRE VERSUS GLOUCESTERSHIRE



STAFFORDSHIRE
 President G. M. SELDON
 Hon Treasurer N. L. ELLIOTT
 Hon Secretary T. M. FRANKS
 Hon Team Secretary D. J. ARCHER



GLOUCESTER
 President S. G. GRANT
 Hon Treasurer K. J. COTTLE
 Hon Secretary G. E. WRIGHT
 Hon Team Secretary D. J. WALTER



ACKNOWLEDGEMENTS

Thanks are due to Gwyn Bayliss of the Express and Star, David Frost of The Guardian, the Burton Daily Mail, Arthur Russell of Gloucester and West Sports Agency and photographer Ken Kelly for their help in the production of the programme. The Committee of the S.R.U. would also like to thank Burton R.F.C. for the thought and engery they have put into staging the match.

TODAYS REFEREE

R. F. (Johnny) JOHNSON played rugby for Skinner's School, Tunbridge Wells, the Army, Metropolitan Police, Kent and London Counties as a tight head prop. For two seasons he captained Kent. He was in the London Counties side which beat South Africa in 1951. Refereed France v Rumania 1969 and France v Ireland 1970 and last year's County Final. Inspector, Metropolitan Police.

Design / Sportsgraphic Printed by Peerless Press Ltd West Bromwich.



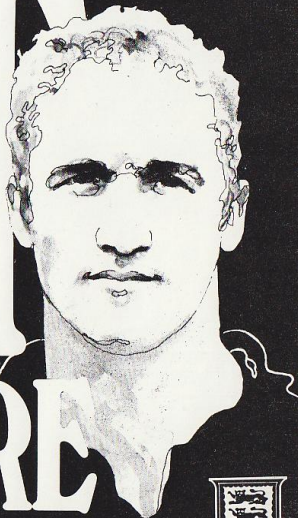
HISTORY OF CHAMPIONS



PREVIOUS WINNERS OF THE COUNTY CHAMPIONSHIP
 RUGBY FOOTBALL UNION
The English County Championship began in 1889 when Yorkshire (undefeated that season) were declared 'Champions' by the Rugby Union. It underwent various changes over the years until assuming its present form in 1921. Here are the winners since that date:

1921	GLOUCESTERSHIRE	1935	LANCASHIRE	1956	MIDDLESEX
1922	GLOUCESTERSHIRE	1936	HAMPSHIRE	1957	DEVON
1923	SOMERSET	1937	GLOUCESTERSHIRE	1958	WARWICKSHIRE
1924	CUMBERLAND	1938	LANCASHIRE	1959	WARWICKSHIRE
1925	LEICESTERSHIRE	1939	WARWICKSHIRE	1960	WARWICKSHIRE
1926	YORKSHIRE	1947	LANCASHIRE	1961	CHESHIRE
1927	KENT	1948	LANCASHIRE	1962	WARWICKSHIRE
1928	YORKSHIRE	1949	LANCASHIRE	1963	WARWICKSHIRE
1929	MIDDLESEX	1950	CHESHIRE	1964	WARWICKSHIRE
1930	GLOUCESTERSHIRE	1951	EAST MIDLANDS	1965	WARWICKSHIRE
1931	GLOUCESTERSHIRE	1952	MIDDLESEX	1966	MIDDLESEX
1932	GLOUCESTERSHIRE	1953	YORKSHIRE	1967	SURREY/DURHAM
1933	HAMPSHIRE	1954	MIDDLESEX	1968	MIDDLESEX
1934	EAST MIDLANDS	1955	LANCASHIRE	1969	LANCASHIRE

MEET GLOUCESTERSHIRE



P. M. KNIGHT (St. Luke's College). Full-back, age 23, 5 ft 9 in, 12 st 2 lb. Normally a wing three-quarter, in which position he plays for St. Luke's College. Also educated at Durham University. Single, he lives in Bristol.



J. L. BERRY (Cheltenham). Right-wing, age 23, 5 ft 10 in, 12 st 2 lb. Yorkshire sprint champion. Like Doble, Downend and Copeland in the Staffordshire side, was educated at St. Paul's College, Cheltenham. Teaches in Gloucester. Married.



J. A. BAYLISS (Gloucester). Right-centro, age 27 next Saturday, 5 ft 11 in, 13 st 10 lb. Has played for Western Counties and skippered England in a Youth international. Married, with two young daughters, he is also an accomplished cricketer. Hobby, golf.



R. E. WHITE (Cheltenham). Left-centro, age 21, 5 ft 10 in, 13 st 4 lb. Product of County Schools and County Colts. Made his debut for Gloucester in the quarter-final against Herts, when he replaced the injured John Bayliss. Deputy place-kicker in the side to John Morris.



M. R. COLLINS (Bristol). Left-wing, age 26, 5 ft 10 in, 13 st 4 lb. Has played for Western Counties and South of England, and in an England trial. Married.



J. T. HOPSON (Gloucester). Fly-half, age 23, 5 ft 10 in, 12 st 7 lb. The Gloucester club's vice-captain. He also played for Bath and represented both Western Counties and South of England. An accomplished cricketer, stylish batsman and leg-break bowler. Married.



J. F. MORRIS (Lydney). Scrum-half, age 31, 5ft 10 in, 12st 7 lb. In his record eighth successive season as captain of Lydney. Like Dovey, was educated at Lydney Grammar School, where he is now a master. Also at St. Luke's College. Played there and for Newport before returning to Lydney.



A. J. ROGERS (Bristol). Prop, age 24, 6ft 1 in, 15st 8 lb. Works in the family fruiterers' business. Married.



J. V. PULLIN (Bristol). Hooker, age 28, 5ft 11 in, 14st 1 lb. The present England hooker; has played for Western Counties, South of England, Barbarians and British Lions. Married. Farmer.



B. A. DOVEY (Bristol). Prop, age 29, 6ft 1 in, 15st 8 lb. England international. Has captained Gloucestershire, and was skipper against Hertfordshire in the quarter-final when Dave Rollitt was injured. Has played for Hertfordshire in the county championship. A Cambridge Blue, also played for Rosslyn Park, Lydney and Barbarians. Schoolteacher.



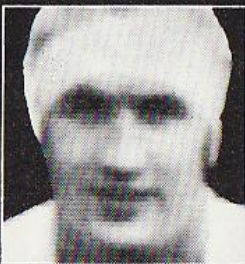
A. BRINN (Gloucester). Lock-forward, age 28, 6ft 3 in, 16st 7 lb. England trials and reserve this season. Has played for North Midlands and Western Counties. Partner in a sports outfitters' shop at Tewkesbury with former Gloucestershire centre, Ron Pitt. Was educated at High Wycombe, and in Rhodesia and Northern Ireland. Married.



J. S. JARRETT (Gloucester). Lock-forward, age 27, 6ft 4 in, 15st 7 lb. England squad member. Has played for Pontypool and Monmouthshire. Skipped the combined Newbridge-Pontypool-Cross Keys XV against the Australians. Educated at Millfield and St. Luke's College, whom he also represented at Rugby. Commercial traveller.



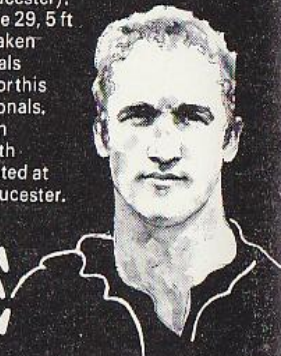
R. C. HANNAFORD (Rosslyn Park). Wing-forward or No 8, age 25, 6ft 4 in, 15st 7 lb. Schoolboy international. Educated at Crypt School, Gloucester, Durham University and Cambridge University, where he won his Blue two seasons ago. Has played for Durham in the county championship.



D. M. ROLLITT (Bristol). No 8, age 27 this month, 6ft 15st 2 lb., Yorkshireman who has played for Wakefield, Bristol University, Loughborough Colleges, U.A.U., Barbarians, Western Counties and England. Teaches physics and physical education at Bristol. Gloucestershire's captain.



R. SMITH (Gloucester). Wing-forward, age 29, 5ft 10 in, 12st 8 lb. Taken part in England trials and been reserve for this season's internationals. Played for Western Counties and South of England. Educated at Crypt School, Gloucester. Married.



MEET GLOUCESTERSHIRE

HOW THEY GOT THERE!



STAFFORDSHIRE

- v LEICESTERSHIRE at Leicester won 23-9.
- v EAST MIDLANDS at Burton won 16-8.
- v WARWICKSHIRE at Coventry drew 12-12.
- v NOTTS, LINCS and DERBY at Burton won 12-0.
- v NORTH MIDLANDS at Burton won 6-0.

MIDLAND GROUP TABLE

	P	W	D	L	F	A	Pts
STAFFORDSHIRE	5	4	1	0	69	29	9
WARWICKSHIRE	5	2	2	1	73	53	6
NORTH MIDLANDS	5	3	0	2	44	44	6
LEICESTERSHIRE	5	3	0	2	59	72	6
NOTTS, LINCS and DERBY	5	1	1	3	46	57	3
EAST MIDLANDS	5	0	0	5	37	73	0

Semi-Final: v EASTERN COUNTIES at Burton won 15-9.

GLOUCESTERSHIRE

- v CORNWALL at Redruth won 12-9.
- v DEVON at Gloucester won 28-17.
- v SOMERSET at Bridgewater won 23-6.

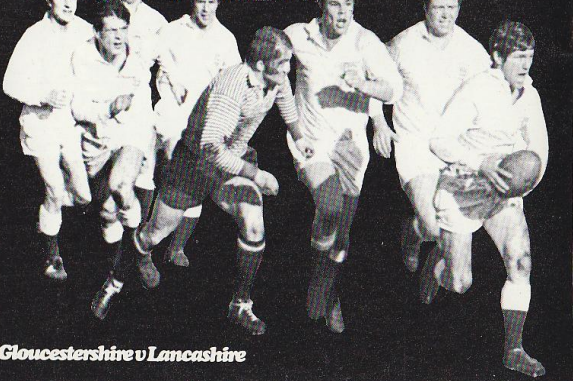
SOUTH WESTERN GROUP TABLE

	P	W	D	L	F	A	Pts
GLOUCESTERSHIRE	3	3	0	0	63	32	6
DEVON	3	2	0	1	44	46	4
CORNWALL	3	1	0	2	30	33	2
SOMERSET	3	0	0	3	20	46	0

Quarter-Final: v HERTFORDSHIRE at Croxley Green won 23-3.

Semi-Final: v LANCASHIRE at Gloucester won 9-6.

Shots from the Semis



Gloucestershire v Lancashire



Staffordshire v Eastern Counties



SEAN SALTER

There is something radically different about this year's county final. Over the seasons we have come to expect to find old hands like Warwickshire, Lancashire, Middlesex, or Durham contesting the climax of the championship. This time, it is true, we have Gloucestershire who must be classed among the old hands, having first won the championship in 1910. But we also have Staffordshire who entered the event for the first time as recently as 1964 and who are taking part in their first final. By their achievements in their first six seasons they have breathed a fresh life into the championship. They bring a new vitality to today's final.

But it would be wrong to imagine that Staffordshire suddenly came into being in 1964. They were playing friendly matches long before that, and I will remember the day they beat Cheshire 19-0 at Birkenhead Park in the autumn of 1959.

Those were the pioneering days which led to their acceptance as a separate Constituent Body in 1964. Before that they had been under the wing of North Midlands.

When the great day came for their first championship match, on 14th October 1964 they invited disaster by ascribing the county of Somerset to a referee who had come all the way up to Stafford from Devon, an area where county boundaries mean a great deal. They lost the match (25-9 to Leicestershire) but not for that reason.

Les Rolinson of this year's team is the sole survivor from that first match although Arnold Copeland was originally chosen for it. They both played four weeks later on today's ground against Warwickshire, then the champions, in a match memorable for the feat of the old Warwickshire firm of Godwin and Judd in getting no fewer than 27 heels against the head.

Staffordshire went through their first two championship seasons without a victory, but in 1966 they beat North Midlands 19-14 at Stourbridge and followed this by defeating Warwickshire at Walsall—a success which began a run of ten home games without defeat including last month's semi-final against Eastern Counties. Behind it all there has been a dedicated and immensely enthusiastic band of officials who, together with such inspiring captains as Kevin Andrews and Mike Davis, have instilled the same dedication and enthusiasm into their players—this and, of course, Sam Doble who has contributed 60 points in his six championship games this season.

Perhaps because they draw their players mainly from those two great West Country clubs, Bristol and Gloucester, one tends to think of Gloucestershire as perennial county finalists. In fact, although they have won the championship nine times, they have not done so since 1937, and they have not reached the final since 1959.

That was the year they had to play Durham twice in the semi-final. First they went all the way up to that extraordinary ground at West Hartlepool, tucked in a triangle of railway embankments, and on a day of drenching rain managed only to draw 0-0. Then Durham travelled down to Kingsholm, failed with five attempts to kick penalty goals, and watched while the Gloucestershire captain, George Cripps, kicked a penalty goal from near half-way in the rain and so won the match 8-6. In the last few minutes of that match there was a poignant moment when the Durham captain, Jim Collard, himself no stranger to West Country rugby, tried to reverse the outcome by taking a penalty kick at goal from quite a straightforward position. He was not a regular kicker, but he took the responsibility on himself because his customary kickers had failed.

Thus Gloucestershire scraped through to their final against Warwickshire, played at Bristol. This, as I recall, was a tremendous forward battle which Warwickshire just managed to win 14-9. For Warwickshire, already reigning champions, this was the second of their seven successful finals in eight years.

During those eight years Warwickshire's dominance was so emphatic that quite early in the season we used to start looking to see whether or not they would be due for a home final that year

and to discover from which group of the championship their semi-final opponents were to come.

In 1958 the final was at Coventry, and Warwickshire's opponents were Cornwall who travelled up from the West with a large crowd of well-wishers hopeful that the championship was to return to Cornwall for the first time since 1908. Disillusionment came with a score of 16-8 to Warwickshire. The 1959 defeat of Gloucester at Bristol was Warwickshire's next final, and in 1960 they held off the challenge of Surrey to the tune of 9-6 at Coundon Road.

In 1961 Warwickshire were frustrated by the winning of the Midland group by East Midlands, and the championship was won by Cheshire; but Warwickshire were back next season, beating Hampshire 11-6 at Twickenham, and they remained champions for four consecutive seasons, beating Yorkshire 13-10 at Coventry, Lancashire 8-6 also at Coventry, and Durham 15-9 at West Hartlepool.

The one of these which stands out most clearly in the memory is the 1963 final in which Yorkshire came so close to breaking Warwickshire's stranglehold on the championship. The Yorkshire forwards, with Mike Campbell-Lamerton, later to captain the 1966 Lions, in the thick of it, put up a tremendous

performance, and Yorkshire were leading 10-8 at the end of normal time. They were even encamped in Warwickshire's 25. But the ball went loose at the back of a line-out, Peter Robbins and his henchmen drove the ball up the field at their feet, and the result of this rush was a set scrum near the Yorkshire posts. Phil Judd and his pack recognised their last chance, and George Cole converted the pushover try.

Gloucestershire were involved in the semi-final in that 1963 season, being beaten 11-3 by Warwickshire at Gloucester. The Gloucestershire side already included the names of Bayliss, Collins, Dovey, Watt and Dick Smith of this season's team. Who would have thought, in those days of Warwickshire invincibility, that Staffordshire would by 1970 have taken over their mantle as representatives of the Midland group in the championship final?

As one whose first county watching involved Devon v Cornwall and whose staple Saturday diet in recent years has been Lancashire v Cheshire and Durham v Yorkshire I confess to a streak of sentiment which revolts with outrage at reading or hearing talk about abolishing the county championship. When Gloucestershire visit Redruth, as they did early in the present season, the whole of Cornwall seems involved in the occasion. Clubs are subordinated, and the county are given total support. The hard brilliance of Lan-

cashire, the awful power of Warwickshire, the dogged persistence of Cumberland and Westmorland, the proud but generous warring of Yorkshire... these have made wonderfully stimulating and satisfying watching over the years. Why should they not continue to do so?

And now we have the exciting progress of Staffordshire from bottom to top in six seasons. It is difficult to believe that such a championship could be moribund.

The rugby and the occasion of last year's final at Redruth could scarcely have been more alive. It was a bright spring-like day, there was a crowd of more than 20,000, and Cornwall led 9-0 at halftime. Then Lancashire, urged to great endeavour by Richard Greenwood, fought back and attacked and attacked until they won the match 11-9. It was their eight championship.

This year Gloucestershire restored some of the pride of the West Country in beating Lancashire 9-6 last month in their semi-final at Gloucestershire. Today they will hope to prove that county rugby is at its strongest in the West and at the same time to put the upstarts, Staffordshire, in their place. Staffordshire will try to prove that they already have the depth of organisation, of skill, and of feeling not just to reach the final but also to win it. The county final almost always produces a rousing game. Today's should be no exception.