

**RUGBY FOOTBALL  
UNION**

**GLOUCESTER**

**V**

**MOSELEY**

**CLUB KNOCK-OUT COMPETITION  
FINAL**

Twickenham  
Saturday  
29th April 1972

Official Programme  
Price **10p**

**GLOUCESTER 17 (2T; 2DG; 1G)**  
(Colours — Cherry & White)

Referee:  
R. LEWIS  
(Wales)

**MOSELEY 6 (1G)**  
(Colours — Red & Black)

15	E. J. F. STEPHENS	PG	FULL BACK
14	R. J. CLEWES		RIGHT WING
13	<del>R. JARDINE</del> R. MORRIS	T	CENTRE
12	<del>J. A. BAYLISS</del>		CENTRE
11	J. DIX	T	LEFT WING
10	T. PALMER	3G	STAND-OFF
9	M. H. BOOTH	3G	SCRUM-HALF
1	R. J. COWLING		LOOSE-HEAD
2	M. J. NICHOLLS (Captain)		HOOKER
3	†M. A. BURTON		TIGHT-HEAD
4	†A. BRINN		SECOND ROW
5	J. S. JARRETT		SECOND ROW
6	J. A. WATKINS		FLANKER
7	R. SMITH		FLANKER
8	M. J. POTTER		NO. 8

Touch Judge: N. P. Jones  
(Gloucestershire/Gloucester)

S. A. DOBLE	15	CONV
K. HATTER	14	
M. K. SWAIN	13	T
†C. W. McFADYEAN	12	
R. KERR	11	
†J. F. FINLAN	10	
†J. G. WEBSTER (Captain)	9	
J. GRIFFITHS	1	
D. E. LANE	2	
C. C. MORRELL	3	
R. MORRIS	4	
†N. E. HORTON	5	
T. J. SMITH	6	
I. N. PRINGLE	7	
J. C. WHITE	8	

Touch Judge: K. A. Pattinson  
(N. Midlands)

**DRAWN MATCHES**

In the Final, if at the end of 40 minutes play each way, the scores are equal, the tries are equal, and the goals from the tries are equal, there shall be an immediate period of replay of 7 minutes each way, with one minute interval, at the end of which, if the scores were still equal, the tries equal and the goals from tries equal, then the result of the match shall be a draw.



A record number of victories and points over the past two years are further evidence of the current success of the Gloucester club. They have not had a single "home" draw in this new competition, yet have reached the final against the strongest opposition, having disposed of such formidable sides as Bath, Bristol, London Welsh and Coventry, all on their home grounds.

This afternoon's battle between the "Midland champions" and the "Pride of the West" should certainly make this a memorable first-ever Rugby Union Club Championship final.

#### **How Gloucester RFC reached the Final**

**First round:** Bath 3 pts., GLOUCESTER 12pts.

**Second round:** Bristol 4pts., GLOUCESTER 15pts.

**Third round:** London Welsh 4pts., GLOUCESTER 9pts.

**Semi-final:** Coventry 6pts., GLOUCESTER 6pts.

Gloucester were awarded the match under the rule that the away team are the winners in a drawn game when the number of tries are equal, or none scored.

#### **THE GLOUCESTER TEAM**

It is a lady's privilege to whisper little white lies about her age — yet this is not necessarily a peculiarity of the fair sex, for most sportsmen tend to give the relevant statistics a slight twist too. Such details are not included in the following brief "pen portraits" of the Gloucester players, though every assurance is given that none of them has yet reached the age of forty!

15. **ERIC STEPHENS:** A prolific goal-kicker; among the leading points' scorers in the country and has played in every position behind the scrum. It has been claimed that he can take at least three kicks at goal in the time it takes some players to build a mound. One of the hardest-hitting and successful batsmen in local senior club cricket. A technical representative; married.

14. **BOB CLEWES:** One of the youngest members of the side and their leading try-scorer, both last season and this. Full of potentiality, he is a thrustful and elusive runner. Seriously injured in a County friendly match against Glamorgan early in the season. A construction surveyor; married.

13. **RICHARD JARDINE:** Has rapidly come to the forefront this season when he was won, and retained, his place in the title-winning Gloucestershire team. A few weeks ago he played for the British Police against the French Police in Paris. Stationed in Gloucester, he was married early in the current season.

12. **JOHN BAYLISS:** A powerful runner with a devastating crash tackle, he was "short-listed" for England's forthcoming tour of South Africa. An aggressive and stylish batsman in senior club cricket. He and his wife have a greengrocery business in Gloucester.



11. JOHN DIX: One of the smallest, but most elusive wingers in the game, he is described as "the diminutive one with the twinkling toes", though his pensive expression tends to belie this attribute. A draughtsman; single.

10. TOM PALMER: Gloucester's valuable import from the Duchy, he is the Cornwall skipper. Equally at home at outside-half, centre or full-back, he has been England's reserve in the back division for every International match this season and fully deserves his selection for the South African tour. An official with the Ministry of Agriculture, Fisheries and Food; married.

9. MICKIE BOOTH: Known, even far beyond his native Gloucester, as the "General" — and not merely because he bears the same name as the great Salvationist. Considered by many shrewd judges to be still the finest scrum-half in the country. Another of the club's highly accomplished cricketers who opens both the batting and the bowling. A skilled metal worker; married.

1. ROBIN COWLING: A tough but genial forward, his languid demeanour belies his pugnacity and endurance. His skilled scrummaging earned him an England regional trial earlier this season. Shares with Mike Burton and skipper Mike Nicholls the reputation given them by one source as "the iron front row of Rugby". He farms near Tewkesbury; married.

2. MIKE NICHOLLS: The Club Captain and generally acknowledged to be one of the greatest captains in the club's long history. He continues to foster a remarkable club spirit and augments his hooking duties with tigerish work in the loose. A self-employed draughtsman; married.

3. MIKE BURTON: One of Gloucester's two new Internationals, having won his first England cap, together with Alan Brinn, in this season's match against Wales, and retaining his place. An irrepressible character who not only knows all the Rugby songs, but claims to have written them all. Managing director of a property company; married.

4. ALAN BRINN: Often referred to as "the gentleman of Rugby football", he deservedly won his England cap in January, though had the wretched luck to injure his ankle in training, thus missing the international match against France and the quarter-final of the club knock-out competition against London Welsh. He and Ron Pitt, a former Gloucester and County centre, run sports' shops in both the city and Tewkesbury; married.

5. JIM JARRETT: Gloucester's other valuable "import" who was formerly skipper of Pontypool and led a Monmouthshire Combined Clubs' team against the Australians on their last visit here. Was also a member of the England squad two years ago. A sales representative; married.

6. JOHN WATKINS: Has made such tremendous strides since joining Gloucester from local club Gordon League less than three years ago and established himself among the best blind-side flankers in the country. He has thoroughly deserved his selection in the England party to tour South Africa. A machinist; single.

7. DICK SMITH: Has probably had more England trials and "reserve" cards than anyone else still playing, and was also on the "short list" for the forthcoming South Africa tour. Played for the Barbarians in their annual Mobbs' Memorial match against East Midlands and on their Easter tour of South Wales. Has made, like Mickie Booth, nearly 450 appearances for Gloucester and fifty in championship matches for Gloucestershire. Manager of a fruit and vegetable business; married.

8. MIKE POTTER: Another brilliant forward who, like Watkins, has sprung to prominence in the last two years and must be bidding for higher honours. A powerful runner with a "bear-hug" tackle that immobilises man and ball. A Council Maintenance Engineer; single.



## GLOUCESTER R.F.C. — CLUB NOTES

In Gloucester Rugby football is virtually a religion and has been ever since the club was founded in 1873.

It is in such an atmosphere that Rugby has flourished in the city which, with its population of nearly 100,000, claim to have more local Rugby teams than any other area of the country per head of population. Small wonder that its famous ground, Kingsholm, has been referred to as "the cockpit of the game".

In its 99 years history Gloucester has produced many Internationals, and perhaps the most famous is Tom Voyce, the doyen of all wing-forwards, who is the club's President, and a Past President of the Rugby Football Union.

Taking pride of place in more recent years are Don Rutherford, now the Technical Administrator of the R.F.U., Peter Ford, a regional selector, and two current England forwards, Alan Brinn and Mike Burton. Added to this list recently are two current players who have been selected for the forthcoming South African tour — Tom Palmer and John Watkins.

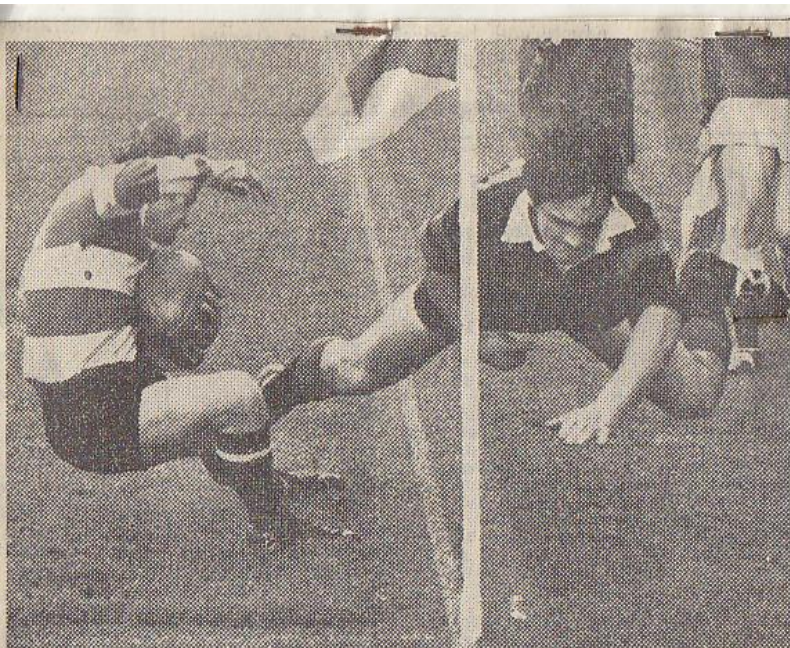
The present Gloucester team are nearly all "home produced"; they were born in and around the city and learned their rugger there, mainly with local clubs. "Competitive" Rugby is part of their very pedigree, for the highly successful North Gloucestershire Combination knock-out cup competition has been in existence since the turn of the century and attracts huge crowds to the Senior and Junior finals at Kingsholm.

It has been said that Gloucester is particularly noted for three things — its Cathedral; elvers; and Rugby Football. Elvers, or tiny eels, are peculiar to the city and the immediate neighbourhood and are caught in the River Severn for only about six weeks at this time of the year.

This is the reason why the Rugby club and their supporters are sometimes known as the "Elver-Eaters". It is rumoured that some of their followers here today have planned to form a Guard of Honour for their team — with elver-nets!

Last week Gloucester played their final home match, when they duly accounted for Pontypool, thus completing a remarkable record of being unbeaten at Kingsholm this season. Indeed, it was as long ago as 3rd October 1970, that they were last beaten on their own ground, and it is more than two years since a Welsh club won at Kingsholm!





Dix turns nimbly inside Griffiths' flying tackle to score Gloucester's first try at Tickenham.



● NIGEL HORTON  
... sent off

### Gloucester attitude

With uncharacteristic and uncomfortable gaps in the Midlands and London, only Gloucester and Bristol can look upon the season with satisfaction in England. Between them they won both the club and the county championships.

Bristol were the most interesting English team, but Gloucester were probably right in asserting that they could beat them whenever it really mattered. Certainly England could do with some of Gloucester's uncompromising attitude.

They deserved to win the Knock-out Competition if only for beating Bath, Bristol, Coventry and London Welsh away from home, though the nonsense of away draws counting as victories in the national stage of the Knock-out will have to be abandoned sooner or later.

**RFU CLUB KNOCK-OUT COMPETITION  
SEASON 1971-72**

First Round	Second Round	Quarter Final (National Draw)	Semi Final	Final
Exeter v St. Ives	Exeter v Penryn			
Penryn v Plymouth Alb.		Penryn v Coventry		
Bath v Gloucester	Bristol v Gloucester		Coventry v Gloucester	
Bristol v Lydney				
Lon Welsh v Oxford	Saracens v Lon Welsh			
Lon Irish v Saracens		Lon Welsh v Gloucester		Gloucester
Lon Scottish v Harlequins	Harlequins v Blackheath			v
Sidcup v Blackheath				
W. Hartlepool v Headingly	Halifax v W. Hartlepool			Moseley
Halifax v Gosforth		Harlequins v Wilmslow		
Wilmslow v Liverpool	Wilmslow v B'head Park			
B'head Park v Wigton			Moseley v Wilmslow	
Notts v Leicester	Coventry v Notts			
Coventry v Birmingham		Moseley v Halifax		
Moseley v Northampton	Moseley v Bedford			
Rugby v Bedford				