

# MOSELEY FOOTBALL CLUB

(Rugby Union)



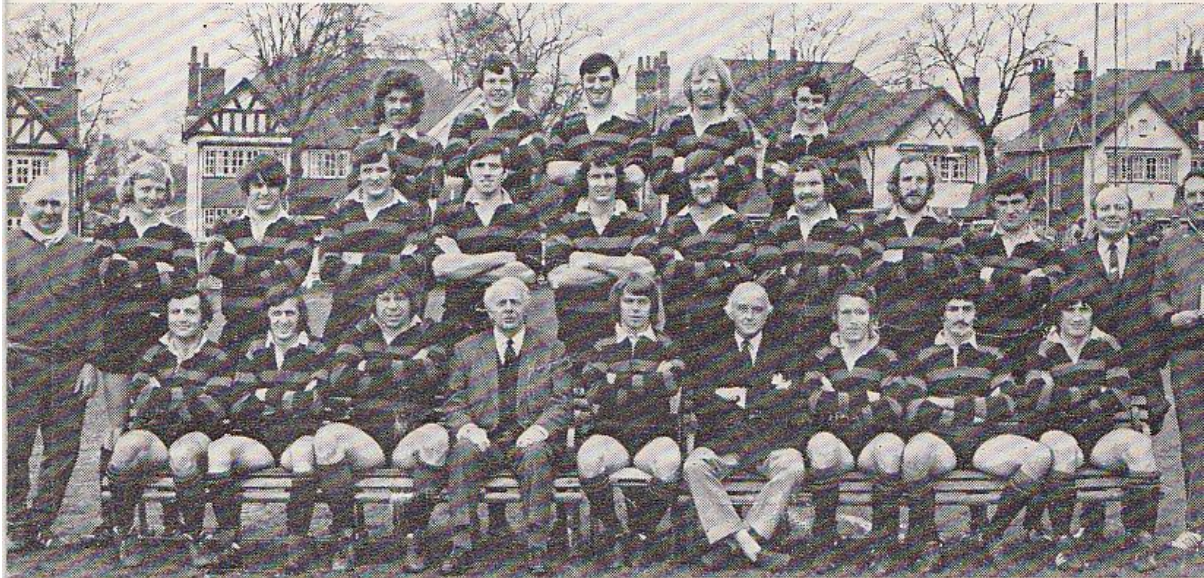
THE REDDINGS

BIRMINGHAM

MOSELEY

1973-1974 Centenary Season

Photograph by Ken Kelly



D. Jones	R. WAIN	B. GREAVES	B. AYRE	N. E. HORTON	D. NUTT	J. G. WEBSTER (Capt.)	C. A. Smallwood	C. W. McFADYEAN	M. J. COOPER	J. G. GRIFFITHS	A. Evans (Touch Judge)	J. L. Tandy
	D. E. PROTHEROUGH	J. F. FINLAN	J. C. WHITE	W. R. Doherty (President)							D. WARREN	
			A. THOMAS	A. W. HILL	D. MASON	S. A. DOBLE	H. JONES	J. H. DAWSON	M. J. GREEN			

1974-75







## GOOD AFTERNOON MOSELEY v. GLOUCESTER

This afternoon should provide an exciting game of rugby football before what must of necessity be a substantial crowd. For some years Gloucester have been rather a "bogey" side so far as Moseley are concerned, and who will forget the first ever "Knock-out" Final at Twickenham when with twelve men on the field we were able to hold our opponents to a score of 6-17.

Both sides hope to be almost at full strength this afternoon and with such players as Butler, Bayliss, Dix, Kingston, Richardson, Nicholls, Blakeway, Jarrett and Watkins in the Gloucester side, and Doble, Hill, Swain, Cooper, Webster, Protherough, skipper Horton, Warren and Ayre to name but a few in the Moseley side spectators should certainly get their monies worth. Possible highlights could well be the duel between the respective full backs Sam Doble and Peter Butler, the latter who last season just failed to beat Sam's world record of points scored during a season, that between Jan Webster and Peter Kingston at scrum half, Peter of course played many fine games for Moseley and the North Midlands, and finally David Protherough will be packing down against his Gloucestershire County colleagues.

It is anticipated that 2 members of the England Selection Committee will be present this afternoon and the writer fancies that they might spot a forward or two to stiffen the current England pack. There are two absentees from the Moseley side, namely Alan Thomas, who is ill in hospital, and Ian Pringle with a broken nose, and their places are taken by Ian Robinson and John White. Seven of the side played in the 1972 Final, namely Doble, Swain, Kerr, Webster, Morrell, Horton and White.

Of the last 22 games played between the clubs Gloucester have won 11, Moseley 8, and 3 draws. Unlike the England side we are not asking for vocal support for the players because we know that it will be provided by our more enthusiastic supporters.

We are pleased to welcome Don Jones, the referee this afternoon, he is always welcome, and it was he who refereed both our fixtures against Coventry earlier in the season.

### REPLACEMENTS

**Moseley:** A. Blagg, M. Evans, D. Savage, G. Cox, J. H. Dawson, M. J. Green.

**Gloucester:** J. Spalding, R. Gwilliam, R. Daldrey, E. Pinkney, R. Jardine, R. Etheridge.

### PLAYING RECORDS

GLOUCESTER ... P. 33 W. 22 L. 11 D. 0 Points for 670 Points against 365  
MOSELEY ... P. 28 W. 22 L. 5 D. 1 Points for 566 Points against 263

### MOSELEY 1st XV FIXTURES, 1974-75

Date	Opponents	Grnd	Rslt.	Points for	Points Against	Date	Opponents	Grnd	Rslt.	Points for	Points Against	
<b>1974</b>												
<b>September</b>												
5	Broughton Park					26	Coventry ...	...	A	W	19	9
	(7.30 p.m.)	H	W	42	15	28	Birmingham ...	...	H	W	22	7
7	Cardiff ...	...	A	L	7	<b>1975</b>						
11	Rugby (7.30 p.m.)	...	H	W	18	<b>January</b>						
14	Headingley ...	...	A	W	29	4	Saracens ...	...	A	L	14	22
18	Nuneaton (7.30 p.m.)	...	H	W	26	11	Northampton ...	...	A	W	21	11
21	Bath ...	...	H	W	31	17	Sale (7.30 p.m.)	...	A	W	9	6
28	Llanelli ...	...	A	D	9	25	London Irish ...	...	H	W	30	3
<b>October</b>												
2	Loughborough Colleges					31	Birkhead Park (7.30 p.m.)	A	W	14	4	
	(7.30 p.m.)	H	W	33	3	<b>February</b>						
5	Sale ...	...	H	W	57	8	Gloucester (KO Comp.)	H				
9	Gloucester (7.30 p.m.)	...	A	L	6	14	Metropolitan Police					
12	Ebbw Vale ...	...	H	W	21		(7.30 p.m.)	H				
19	Newbridge ...	...	A	W	10	19	Leicester (7.30 p.m.)	...	A			
26	Coventry ...	...	H	L	6	22	Cambridge University...	H				
<b>November</b>												
2	London Welsh ...	...	A	W	15	<b>March</b>						
9	Gloucester ...	...	H	W	29	1	Abertillery ...	...	A			
16	Rosslyn Park ...	...	A	C	—	8	Neath ...	...	H			
23	Leicester ...	...	A	W	22	14	Richmond (7.30 p.m.)	...	H			
30	Wasps ...	...	A	W	14	19	Notts. (7.30 p.m.)	...	H			
<b>December</b>												
7	Wilmslow (K.O. Comp.)	H	W	15	7	22	London Scottish	...	A			
14	Bristol ...	...	H	W	18	29	Newport	...	A			
18	Newport (7.30 p.m.)	...	H	L	7	31	Exeter ...	...	A			
21	Bedford ...	...	H	W	22	<b>April</b>						
						1	Torquay ...	...	A			
						5	Waterloo ...	...	A			
						12	Bridgend ...	...	H			
						19	Northampton	...	H			
						26	Cheltenham ...	...	A			

*Front Cover Team Photograph by Ken Kelly.*