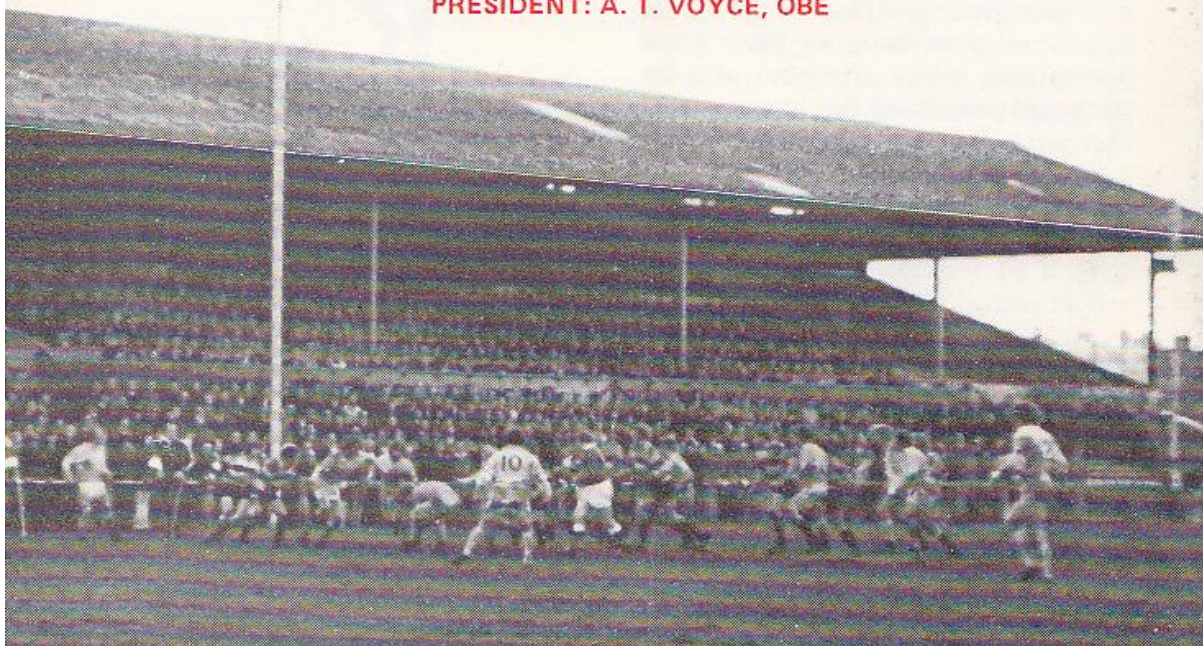




GLOUCESTER RUGBY FOOTBALL CLUB

Founded 1873

PRESIDENT: A. T. VOYCE, OBE



GLOUCESTER

V

MOSELEY

at

KINGSHOLM, GLOUCESTER

WEDNESDAY, 1st OCTOBER, 1975

Kick-off: 7.15 p.m.

Official Programme—6p



NORMAN P. PARTRIDGE (INSURANCE BROKERS) LTD.

1 BARTON STREET (corner of Clarence Street) GLOUCESTER
Telephone: 32088 and 34920

Free Advice
on all
Insurances

GLOUCESTER

Cherry and White

- Full Back
15. **P. Butler** *†
- Three Quarters
14. **P. Williams**
13. **B. Vine** *
12. **R. Jardine** *
11. **J. Dix** *
- Half Backs
10. **R. Correia**
9. **W. Birchley**
- Forwards
1. **K. Richardson** *
2. **F. Reed** *
3. **M. Burton (Capt.)** *†
4. **P. Winnel** *
5. **J. Fidler** *
6. **J. Watkins** *†
8. **E. Pinkney** *
7. **J. Haines** *

Referee: MERION JOSEPH (Welsh Rugby Union)

† International
§ Under-23 International
* County

First XV Fixtures

1975	Sept. 3	Weston-s-Mare	A	37-3
	6	Broughton Pk	A	28-18
	10	S. Wales Police	H	25-10
	13	Coventry ...	H	13-13
	20	Fylde ...	A	3-31
	24	Stroud ...	A	30-9
	27	Bristol ...	A	0-4
	Oct. 1	Moseley ...	H	-
	4	Bedford ...	A	-
	8	British Police ...	H	-
	11	Harlequins ...	A	-
	15	Cheltenham ...	H	-
	18	Newport ...	H	-
	25	Clifton ...	H	-
	29	Pontypool ...	H	-
	Nov. 1	Leicester ...	A	-
	8	Exeter ...	H	-
	12	Cambridge Univ. A	A	-
	15	Aberavon ...	A	-
	22	London Irish ...	H	-
	27	Loughborough	H	-
	29	Oxford Univ.	H	-
	Dec. 6	Moseley ...	A	-
	13	Bath ...	H	-
	20	Coventry ...	A	-
	26	Lydney ...	H	-
	27	Newbridge ...	H	-

First XV Fixtures

1976	Jan. 1	Nottingham ...	H	-
	3	London Scottish	A	-
	10	Leicester ...	H	-
	17	Wasps ...	H	-
	24	Army ...	H	-
	28	St. Lukes Coll.	H	-
	31	Bridgend ...	A	-
	Feb. 6	Bristol ...	H	-
	14	Bath ...	A	-
	20	Swansea ...	H	-
	28	Aberavon ...	H	-
	Mar. 6	Northampton	A	-
	10	Cheltenham ...	A	-
	13	Richmond ...	H	-
	17	Newbridge ...	A	-
	20	Guys Hospital	A	-
	24	Abertillery ...	A	-
	27	Saracens ...	H	-
	31	Cardiff ...	A	-
	Apr. 7	Newport ...	A	-
	10	Ebbw Vale ...	H	-
	15	Lydney ...	A	-
	17	Headingley ...	H	-
	19	Birkenhead Park	H	-
	24	Torquay Ath.	A	-
	May 1	Sale ...	A	-

The First-Aid Service on this ground is provided voluntarily by
The City of Gloucester Division, St. John Ambulance Brigade

MOSELEY

Red and Black

- Full Back
15. **R. Akenhead** *
- Three Quarters
14. **R. Waine** *
13. **M. Swayne** *
12. **A. W. Hill** *
11. **A. Thomas** *
- Half Backs
10. **M. J. Cooper** *†
9. **J. Webster** *†
- Forwards
1. **J. Heckt**
2. **G. Cox** *
3. **B. Greeves** *
4. **N. Horton (Capt.)** *†
5. **R. Field** *§
6. **S. King** *
8. **D. Nutt** *
7. **D. Warren** *



WESTGATE motorhouse

DAIMLER * JAGUAR * ROVER * TRIUMPH

Telephone: 34581





CORDIAL WELCOME TO MOSELEY

Moseley have firmly established themselves as one of the favourite visiting clubs to Kingsholm — and among the most formidable of our opponents — and we extend a particularly cordial welcome to them this evening.

Last season our old Midland friends and rivals had decidedly the better of matters against the Cherry and Whites, who narrowly won the first encounter at Kingsholm. But a month later — on a County match date, it is true — Moseley made no mistake with a convincing victory in a high-scoring game at the Reddings.

Then in February of this year the draw for the second round of the Rugby Union national knock-out competition brought the two clubs meeting for the third time, again at the Reddings. And on that occasion there could be no excuses, for Gloucester were decisively eliminated from the competition. We must warn our friends, therefore, that the lads will be thirsting for revenge this evening and we look forward to another absorbing tussle.



KINGSHOLM KACKLE This Season's 'Cup'

Reference to the knock-out competition, incidentally, brings to mind this season's first round draw, in which Gloucester have to travel to the Beacon Field to meet Plymouth Albion. Three dates have been offered by Plymouth, but two are quite impossible, and it seems likely that the match will be played next month, though a decision is expected to be made on Monday. Perhaps publicity on the draw has not been all that one might have desired in view of the interest in the competition, especially among the larger clubs, so it might be fitting to publish it in these notes. It is—

Bath v. Bristol (which is being played on October 18); Plymouth Albion v. Gloucester; Rosslyn Park v. Marlow; London Welsh v. Richmond; Havant v. Thurrock; London Scottish v. Wasps; London Irish v. Saracens; Kettering v. Coventry; Northampton v. Bedford; Gosforth v. Cockermouth or Hartlepool; Headingley v. Roundhay; Orrell v. Sale; Moseley v. Nottingham; Liverpool v. Leicester; Maidenhead v. Wakefield.



Mini Rugby

A date for supporters' diaries! Longlevens R.F.C. are holding a *Mini Rugby Tournament* at their ground in Longford Lane next Sunday week, October 12. Teams from Lydney, Stroud, Cheltenham, Stow-on-the-Wold and local clubs will be taking part in three age groups — Under 10, 11 and 13. This is the

first tournament of its kind in the city and it will start on 1.00 p.m., and the finish envisaged about 5.30 p.m. Internationals Mike Burton, the Gloucester skipper, and Alan Brinn have willingly agreed to present the trophies after the finals. The afternoon promises to provide a feast of entertainment and programmes, price 5p, may be obtained on the ground. This is an ideal opportunity to support these keen youngsters, many of whom may be the great players of the future.



On the Mend

There is encouraging news about our County winger, Bob Clewes who broke his collar-bone in the match against Coventry last month. It is, as we say, well on the mend and Bob hopes to be training again next week and is looking forward

to playing again shortly. Vice-captain Mike Nicholls has fully recovered from his muscle injury and has already given it a thorough test with the United.



Next Home Game

On Saturday the Cherry and Whites make the long journey to Goldington Road to meet Bedford, further formidable opposition, They return to Kingsholm next Wednesday, October 8, when British Police will be the visitors, with the usual kick-off at 7.00 p.m.

Arthur Russell



FOR ALL YOUR PROPERTY REQUIREMENTS

Roy Long & Partners

House, Land and Estate Agents

22 Worcester Street, Gloucester

Telephone: 0452-35962/3

PERSONAL SERVICE ASSURED