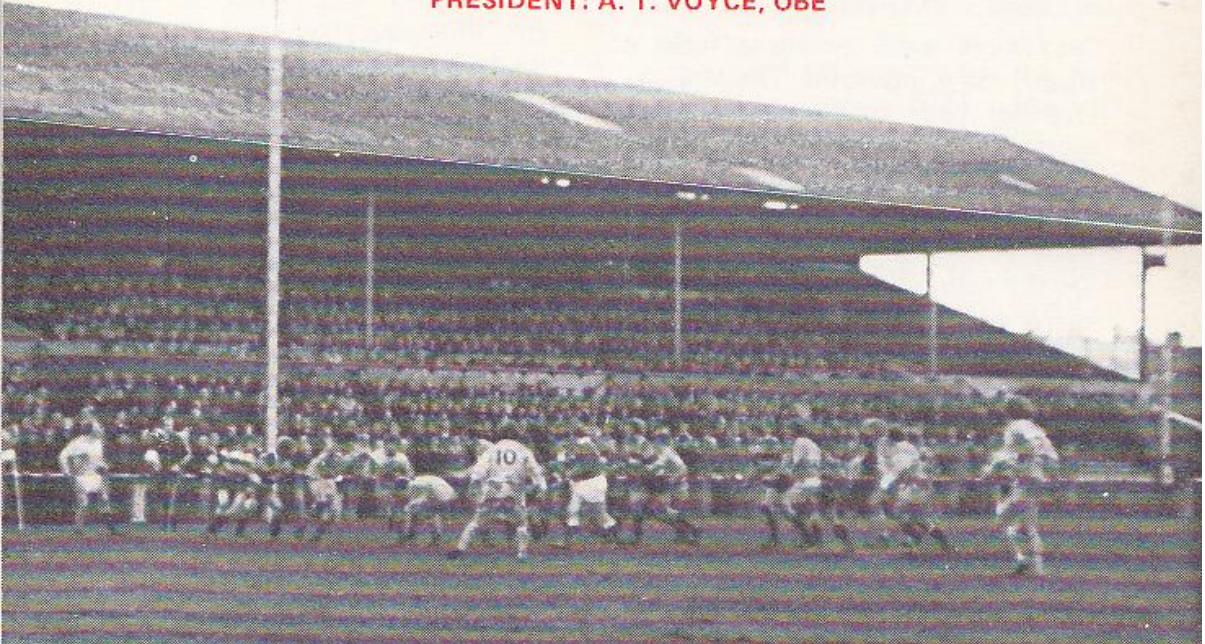




GLOUCESTER RUGBY FOOTBALL CLUB

Founded 1873

PRESIDENT: A. T. VOYCE, OBE



GLOUCESTER

V

BRITISH POLICE

at

KINGSHOLM . GLOUCESTER

WEDNESDAY, 8th OCTOBER, 1975

Kick-off: 7.00 p.m.

Official Programme—6p



NORMAN P. PARTRIDGE (INSURANCE BROKERS) LTD.

1 BARTON STREET (corner of Clarence Street) GLOUCESTER
Telephone: 32088 and 34920

Free Advice
on all
Insurances

GLOUCESTER Cherry and White

- Full Back
15. **P. Butler** *†
- Three Quarters
14. **J. Dix** *
13. **B. Vine** *
12. **R. Jardine** *
11. **P. Williams**
- Half Backs
10. **R. Correia**
9. **P. Kingston** *†
- Forwards
1. **K. Richardson** *†
2. **F. Reed** *
3. **M. Burton (Capt.)** *†
4. **P. Winnel** *
5. **S. Boyle**
6. **J. Watkins** *†
8. **E. Pinkney** *
7. **R. Smith** *

I Referee: A. A. HAYNES (Warwickshire Society)

† International
‡ Under-23 International
* County

First XV Fixtures			First XV Fixtures		
1975			1976		
Sept. 3	Weston-s-Mare	A 37-3	Jan. 1	Nottingham ...	H --
6	Broughton Pk	A 26-18	3	London Scottish	A --
10	S. Wales Police	H 25-10	10	Leicester ...	H --
13	Coventry ...	H 13-13	17	Wasps ...	H --
20	Fylde ...	A 3-31	24	Army ...	H --
24	Stroud ...	A 30-9	28	St. Lukes Coll.	H --
27	Bristol ...	A 0-4	31	Bridgend ...	A --
Oct. 1	Moseley ...	H 9-22	Feb. 6	Bristol ...	H --
4	Bedford ...	A 10-18	14	Bath ...	A --
8	British Police ...	H --	20	Swansea ...	H --
11	Harlequins ...	A --	28	Aberavon ...	H --
15	Cheltenham ...	H --	Mar. 6	Northampton	A --
18	Newport ...	H --	10	Cheltenham ...	A --
25	Clifton ...	H --	13	Richmond ...	H --
29	Pontypool ...	H --	17	Newbridge ...	A --
Nov. 1	Leicester ...	A --	20	Guys Hospital	A --
8	Exeter ...	H --	24	Abertillery ...	A --
12	Cambridge Univ.	A --	27	Saracens ...	H --
15	Aberavon ...	A --	31	Cardiff ...	A --
22	London Irish ...	H --	Apr. 7	Newport ...	A --
27	Loughborough	H --	10	Ebbw Vale ...	H --
29	Oxford Univ.	H --	15	Lydney ...	A --
Dec. 6	Moseley ...	A --	17	Headingley ...	H --
13	Bath ...	H --	19	Birkenhead Park	H --
20	Coventry ...	A --	24	Torquay Ath.	A --
26	Lydney ...	H --	May 1	Sale ...	A --
27	Newbridge ...	H --			

The First-Aid Service on this ground is provided voluntarily by
The City of Gloucester Division, St. John Ambulance Brigade

BRITISH POLICE White

- Full Back
15. **M. Pengilly** South Wales
- Three Quarters
14. **S. Tiddy** Metropolitan
13. **T. Edwards** South Wales
12. **M. Gray** Metropolitan
11. **D. Rees** Gwent
- Half Backs
10. **D. Napier** Metropolitan
9. **I. Burrell** Metropolitan
- Forwards
1. **G. Thomas** South Wales
2. **D. Young** South Wales
3. **J. Clark** Humberside
4. **P. Prygodzicz** South Wales
5. **B. Vogle** Staffordshire
6. **A. Moore (Capt.)** Met.
8. **S. Skibbicki** Staffordshire
7. **B. Tilstone** Staffordshire



WESTGATE motorhouse

DAIMLER * JAGUAR * ROVER * TRIUMPH

Telephone: 34581





WELCOME TO THE BRITISH POLICE!

Resisting the temptation to make corny jokes about being an "arresting" attraction we extend a very cordial welcome this evening to the powerful British Police side, who provide further formidable opposition to Gloucester in their efforts to end the recent disappointing run.

The Police invariably field a team of experienced top-class players and we look forward to an enjoyable game, with the emphasis on running rugby.



KINGSHOLM KACKLE Frustrating

It was a frustrating experience to succumb to Bedford at Goldington Road last Saturday as the result of six penalty goals, particularly after scoring the only try of a somewhat uninspiring tussle. But with the old saying that the way of the transgressor is hard in mind, efforts will no doubt be made to avoid incurring the displeasure of the referee in future matches.

Mini Rugby

A reminder that Longlevens R.F.C. are holding a *Mini Rugby Tournament* at their ground in Longford Lane next Sunday, October 12th. Teams from Lydney, Stroud, Cheltenham, Stow-on-the-Wold, and local clubs will be taking part in three age groups – Under 10, 11, and 13. This is the first tournament of its kind in the city and it will start at 1.00 p.m., with the finish envisaged about 5.30 p.m. Internationals Mike Burton, the Gloucester skipper, and Alan Brinn have willingly agreed to present the trophies after the finals.

For those unable to spend the whole afternoon at Longford Lane, there is another great attraction at the other end of the city, at Red Well Road, in fact, where Matson meet the Bristol club, Avonmouth Old Boys, in the quarter-final of the Gloucestershire R.F.U. County Cup competition.



Out of Action

There was another sad blow for Gloucester on Monday evening, when their clever young County winger, Stuart Dix, suffered a back injury in the United's match against Newport High School Old Boys. Stuart may be out of action for a week or two, but is almost certain to miss the County match against Monmouthshire next Tuesday evening at Kingsholm.

Feast of Rugby

Although Gloucester are away yet again next Saturday, when they travel to London to meet Harlequins, the highly successful United side have another attractive home match with the visit of Richmond Vikings, one of the strongest of their opponents. The kick-off is, as usual, 3.00 p.m.

And next week brings a feast of Rugby to Kingsholm. On Monday, October 13th, United meet Devizes whom, supporters will recall, were knocked out of the national cup competition a couple of years ago by Gloucester.

On the following evening, of course, there is the County match against Monmouthshire, who intend fielding their strongest side in view of the forthcoming visit of the Australians, whom they meet later in the season.

On Wednesday, October 15th, Gloucester return to Kingsholm to meet neighbouring Cheltenham. All these matches will start at 7.00 p.m.



Cup Coach

An announcement will be shortly made concerning Gloucester's John Player Cup first round match against Plymouth Albion at the Beacon Field.

It is expected to be next month and when the date is finally agreed upon, arrangements will be made to run a coach from Kingsholm for the game.

Arthur Russell



FOR ALL YOUR PROPERTY REQUIREMENTS

Roy Long & Partners

House, Land and Estate Agents

22 Worcester Street, Gloucester

Telephone: 0452-35962/3

PERSONAL SERVICE ASSURED