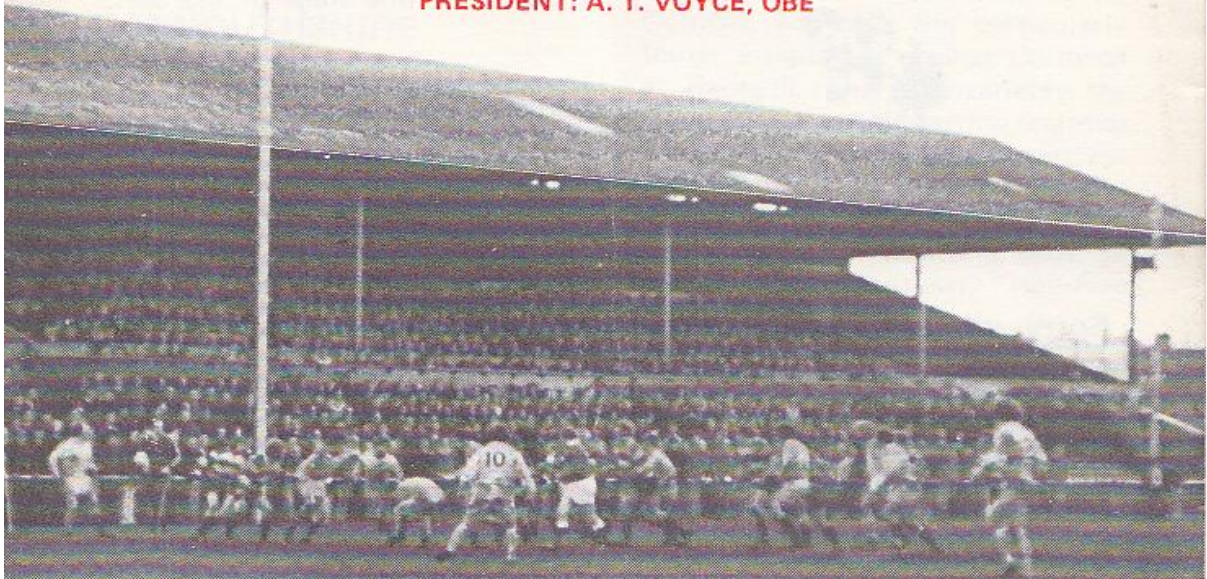




GLOUCESTER RUGBY FOOTBALL CLUB

Founded 1873

PRESIDENT: A. T. VOYCE, OBE



GLOUCESTER

V

MONMOUTHSHIRE

at

KINGSHOLM . GLOUCESTER

TUESDAY, 14th OCTOBER, 1975

Kick-off: 7.00 p.m.

Official Programme—6p



NORMAN P. PARTRIDGE (INSURANCE BROKERS) LTD.

1 BARTON STREET (corner of Clarence Street) GLOUCESTER
Telephone: 32088 and 34920

Free Advice
on all
Insurances

GLOUCESTERSHIRE

White

- Full Back
15. **P. Butler** Gloucester
- Three Quarters
14. **J. Dix** Gloucester
13. **R. Jardine** Gloucester
12. **J. Bayliss (Capt.)** Gloucester
11. **D. Pointon** Gloucester
- Half Backs
10. **C. Williams** Headingly
9. **P. Kingston** Gloucester
- Forwards
1. **B. Nelmes** Cardiff
2. **J. Pullin** Bristol
3. **M. Burton** Gloucester
4. **R. Powell** Llanelly
5. **J. Simonett** St. Paul's Coll.
6. **M. Rafter** Bristol
8. **D. Rollit** Bristol
7. **J. Haines** Gloucester

Referee: N. P. JONES (Gloucestershire Society)

COUNTY CHAMPIONSHIP MATCHES

- October 14 Gloucester v. Monmouth at Gloucester (Friendly)
- October 25 Cornwall v. Gloucestershire at Redruth
- November 8 Gloucestershire v. Devon at Bristol
- November 22 Somerset v. Gloucestershire at Bath

SPECIAL MATCHES

- September 18 Gloucester v. Begles (France) at Gloucester
- April 14 England v. Wales (19 Group) at Gloucester

INTERNATIONAL MATCHES

- January 3 England v. Australia at Twickenham
- January 17 England v. Wales at Twickenham
- February 21 Scotland v. England at Murrayfield
- March 6 England v. Ireland at Twickenham
- March 20 France v. England at Paris

The First-Aid Service on this ground is provided voluntarily by
The City of Gloucester Division, St. John Ambulance Brigade

MONMOUTHSHIRE

Dark Blue

- Full Back
15. **D. Thomas** Cross Keys
- Three Quarters
14. **A. Haines** Cross Keys
13. **A. Tovy** Ebbw Vale
12. **A. Thomas** Abertillery
11. **I. Evans** Ebbw Vale
- Half Backs
10. **K. James** Abertillery
9. **A. Lewis** Abertillery
- Forwards
1. **A. Faulkner** Pontypool
2. **R. Windsor** Pontypool
3. **C. Price** Pontypool
4. **R. Floyd** Pontypool
5. **W. Evans** Pontypool
6. **T. Cobner (Capt.)** P'pool
8. **C. Davies** Newbridge
7. **T. Gardner** Ebbw Vale



WESTGATE motorhouse

DAIMLER * JAGUAR * ROVER * TRIUMPH

Telephone: 34581





WELCOME TO MONMOUTHSHIRE

This evening we extend an extremely cordial welcome to Monmouthshire, particularly in view of the fact that they provide what may be the only county match at Kingsholm this season. Moreover, they intend to make this game a testing "warm up" for the forthcoming visit of the Australians, whom they meet later in the season and have accordingly selected their strongest side. Indeed, as far as the respective front rows are concerned, it could almost be termed an England-Wales clash. We look forward, then, to an absorbing tussle of the giants.

CHAMPIONS' CHATTER Changes

Two late changes in Gloucestershire's team for this evening's game create interesting speculation. Stuart Dix, injured last week in a Gloucester United match, is the third of the County's top wingers to join the list of casualties and it may be surprising to many supporters to find David Pointon, normally the Cherry and Whites' outside-half, named as his replacement.

But they may be even more surprised to know that David played on the wing throughout a whole season for his former club, Rugby, and has also represented Warwickshire Under-23 in that position.

Similarly, John Simonett, who comes in for John Fidler, still nursing a broken thumb, was captain of the highly successful Scotland (Under-19 group) side a few years ago when Andy Irvine, their current full-back, also played — at centre!

Gloucestershire embark on the defence of their county championship title next Saturday week, October 25, with the particularly tough assignment against Cornwall at Redruth. This is invariably the sternest test for all visiting counties who not only have to overcome the dedicated Cornishmen, but also have to experience the constant roar of their fanatical supporters, plus, of course, the notorious "Hell-Fire Corner".!



KINGSHOLM KACKLE Great Win

On the club front are congratulations to the Gloucester lads on their splendid victory over Harlequins at the Stoop Memorial Ground last Saturday. It was a great performance which suggests together with the victory over British Police last Wednesday, that they are back to top form, despite the fact that several key players are currently on the injured list.

There are encouraging hopes that both those brilliant wingers, Stuart

Dix and Bob Clewes, together with John Fidler, will all be back in action very shortly, but there is also the sad news that prop Phil Blake-way may be out of the game for the season, following a badly wrenched back which is causing him considerable trouble.



Sorry, wrong number!

Because of a printing error on members' and patrons' season tickets the home telephone number of the Gloucester fixture secretary, Doug Dawe, appears as Painswick 813531. This is incorrect and is naturally causing some inconvenience. The correct number, which appears on the ordinary fixture "hand-outs", is Painswick **813513**.

250 Club

The 250 Club is now closed! This was the announcement made last week-end by the committee concerned, who apologise to those who had intended to join — and were indeed former members — but did not do so in time. It would be difficult to extend it to a "300 Club" at this stage of the season.

Cheltenham

Tomorrow evening, with the usual 7.00 p.m. kick-off, neighbouring Cheltenham pay their annual visit to Kingsholm. The Town, unfortunately, have not won a match this season, so they will be hoping to "pull a little extra out" for the clash against Gloucester.

Arthur Russell



FOR ALL YOUR PROPERTY REQUIREMENTS

Roy Long & Partners

House, Land and Estate Agents

22 Worcester Street, Gloucester

Telephone: 0452-35962/3

PERSONAL SERVICE ASSURED