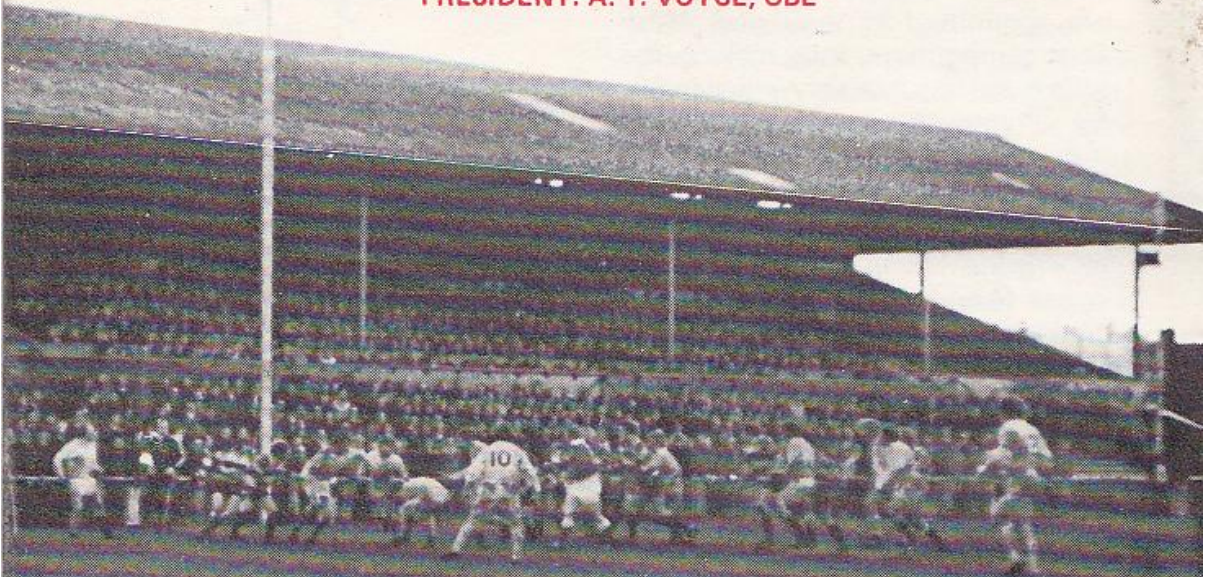




GLOUCESTER RUGBY FOOTBALL CLUB

Founded 1873

PRESIDENT: A. T. VOYCE, OBE



GLOUCESTER

V

CHELTENHAM

at

KINGSHOLM . GLOUCESTER

WEDNESDAY, 15th OCTOBER, 1975

Kick-off: 7.00 p.m.

Official Programme—6p



NORMAN P. PARTRIDGE (INSURANCE BROKERS) LTD.

1 BARTON STREET (corner of Clarence Street) GLOUCESTER
Telephone: 32088 and 34920

Free Advice
on all
Insurances

GLOUCESTER

Cherry and White

- Full Back
15. R. Etheridge *
- Three Quarters
14. S. Clewes *
13. B. Vine *
12. R. Mogg *
11. R. White *
- Half Backs
10. R. Correia
9. W. Birchley
- Forwards
1. K. Richardson *
2. F. Reed
3. M. Burton (Capt.) *†
4. P. Winnel
5. S. Boyle
6. J. Watkins *†
8. E. Pinkney
7. R. Smith *

Referee: P. MALLALVE (Oxford Society)

† International

‡ Under-23 International

* County

First XV Fixtures

1975			
Sept.	3	Weston-s-Mare	A 37-3
	6	Broughton Pk	A 26-18
	10	S. Wales Police	H 25-10
	13	Coventry ...	H 13-13
	20	Fylde ...	A 3-31
	24	Stroud ...	A 30-9
	27	Bristol ...	A 0-4
Oct.	1	Moseley ...	H 9-22
	4	Bedford ...	A 10-18
	8	British Police	H 31-6
	11	Harlequins ...	A 24-13
	15	Cheltenham ...	H -
	18	Newport ...	H -
	25	Clifton ...	H -
	29	Pontypool ...	H -
Nov.	1	Leicester ...	A -
	8	Exeter ...	H -
	12	Cambridge Univ.	A -
	15	Aberavon ...	A -
	22	London Irish ...	H -
	27	Loughborough	H -
	29	Oxford Univ.	H -
Dec.	6	Moseley ...	A -
	13	Bath ...	H -
	20	Coventry ...	A -
	26	Lydney ...	H -
	27	Newbridge ...	H -

First XV Fixtures

1976			
Jan.	1	Nottingham ...	H -
	3	London Scottish	A -
	10	Leicester ...	H -
	17	Wasps ...	H -
	24	Army ...	H -
	28	St. Lukes Coll.	H -
	31	Bridgend ...	A -
Feb.	6	Bristol ...	H -
	14	Bath ...	A -
	20	Swansea ...	H -
	28	Aberavon ...	H -
Mar.	6	Northampton	A -
	10	Cheltenham ...	A -
	13	Richmond ...	H -
	17	Newbridge ...	A -
	20	Guys Hospital	A -
	24	Abertillery ...	A -
	27	Saracens ...	H -
	31	Cardiff ...	A -
Apr.	7	Newport ...	A -
	10	Ebbw Vale ...	H -
	15	Lydney ...	A -
	17	Headingley ...	H -
	19	Birkenhead Park	H -
	24	Torquay Ath.	A -
May	1	Sale ...	A -

The First-Aid Service on this ground is provided voluntarily by
The City of Gloucester Division, St. John Ambulance Brigade

CHELTHENHAM

Red and Black

- Full Back
15. P. Newport-Black
- Three Quarters
14. B. Bartlett
13. B. Burroughes
12. R. Light
11. C. Jenkins
- Half Backs
10. G. Warren
9. M. Jones
- Forwards
1. A. Drake
2. M. Hamblin
3. J. Millichamp
4. A. Turtan
5. M. Pocock (Capt.)
6. A. Bunston
8. G. Williams
7. S. Minchin



WESTGATE motorhouse

DAIMLER * JAGUAR * ROVER * TRIUMPH

Telephone: 34581





CORDIAL WELCOME TO THE TOWN

This evening we extend a particularly cordial welcome to our friends and neighbours, Cheltenham, with whom we have enjoyed so many happy games over the years. In recent seasons the Town have been in the process of re-building; indeed, they still are, and in consequence their successes have not matched their dedicated approach. They have yet to record their first victory this season, but this has not deterred them from playing some bright, open rugby, and we look forward to another enjoyable game against the Town.



KINGSHOLM KACKLE Resounding

Last season's two meetings brought resounding victories for Gloucester, who accounted for the Town at Kingsholm by 48 - 0 and won the return match at the Athletic Ground by 49 - 3.



Piling up Points

Those supporters who make the journey to Kingsholm to watch Gloucester United are being amply rewarded, for the "pups", as their enthusiastic skipper, Jerry Herniman, describes the lads, are playing some magnificent rugby and piling up the points in astonishing manner.

Last Monday evening they romped to a remarkable win over Devizes by 75 - 3 and but for the care-free approach in the second half, when there was a little too much "embroidery", they would surely have topped the three-figure mark. This was only their ninth game of the season, yet already they have amassed 332 points.



England Trial?

As many supporters are aware the Gloucester club have secured a "plum" fixture with the decision to stage the second international trial match, England v. The South, at Kingsholm on Saturday, December 13th. The Cherry and Whites were to have met Bath on that day, but the match has been postponed until later in the season.

John Player Cup

Although arrangements have not yet been completed it seems likely that Gloucester's John Player Cup first round match against Plymouth Albion at the Beacon Field will be on Saturday, November 15th.

On this day the Cherry and Whites were due to meet Aberavon, who are committed to their own Welsh Cup competition, thus making the switch in fixtures very convenient, for Plymouth should have little difficulty in re-arranging their home match with Esher on the same day.

When final details are known arrangements will be made to run a coach from Kingsholm for the trip to Plymouth. All those wishing to book a seat and give the lads their

support are asked to contact Mr. Jim Holder in the Social Club.



Visit of Newport

Following this evening's game Gloucester have three more consecutive home matches and the next is on Saturday, when formidable Newport will be the visitors to Kingsholm, kick-off as usual at 3.00 p.m.

Arthur Russell



FOR ALL YOUR PROPERTY REQUIREMENTS

Roy Long & Partners

House, Land and Estate Agents

22 Worcester Street, Gloucester

Telephone: 0452-35962/3

PERSONAL SERVICE ASSURED