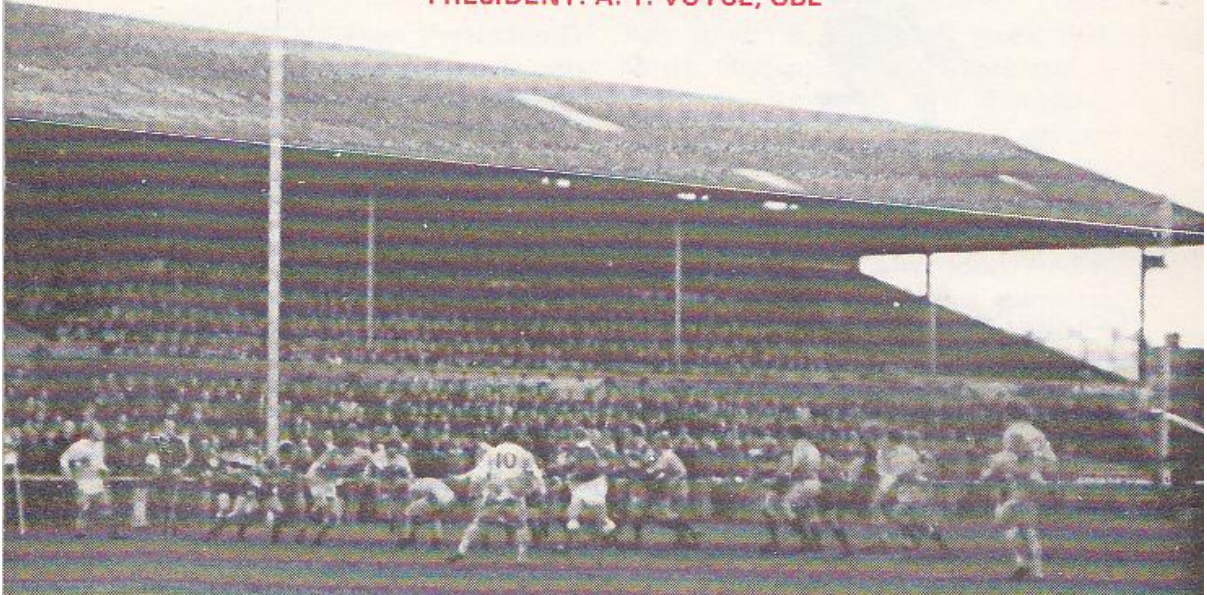




GLOUCESTER RUGBY FOOTBALL CLUB

Founded 1873

PRESIDENT: A. T. VOYCE, OBE



GLOUCESTER

V

CLIFTON

at

KINGSHOLM . GLOUCESTER

SATURDAY, 25th OCTOBER, 1975

Kick-off: 3.00 p.m.

Official Programme—6p



NORMAN P. PARTRIDGE (INSURANCE BROKERS) LTD.

1 BARTON STREET (corner of Clarence Street) GLOUCESTER
Telephone: 32088 and 34920

Free Advice
on all
Insurances

GLOUCESTER Cherry and White

- Full Back
15. R. Etheridge
- Three Quarters
14. P. Williams
13. B. Vine *
12. R. White *
11. J. Dix *
- Half Backs
10. R. Correia
9. W. Birchley
- Forwards
1. K. Richardson (Capt.) *
2. K. Nicholls
3. M. Curran
4. P. Winnel *
5. S. Boyle *
6. E. Pinkney *
8. J. Jarrett *
7. R. Smith *

Referee: S. A. Musgrove (Dorset & Wilts. Society)

† International
§ Under-23 International
* County

First XV Fixtures

1975			
Sept.	3	Weston-s-Mare	A 37- 3
	6	Broughton Pk	A 26-18
	10	S. Wales Police	H 25-10
	13	Coventry	H 13-13
	20	Fyde	A 3-31
	24	Stroud	A 30- 9
	27	Bristol	A 0- 4
Oct.	1	Moseley	H 9-22
	4	Bedford	A 10-18
	8	British Police...	H 31- 6
	11	Harlequins	A 24-13
	15	Cheltenham	H 40- 4
	18	Newport	H 17-13
	25	Clifton	H -
	29	Pontypool	H -
Nov.	1	Leicester	A -
	8	Exeter	H -
	12	Cambridge Univ.	A -
	15	Aberavon	A -
	22	London Irish ...	H -
	27	Loughborough	H -
	29	Oxford Univ.	H -
Dec.	6	Moseley	A -
	13	Bath	H -
	20	Coventry	A -
	26	Lydney	H -
	27	Newbridge	H -

First XV Fixtures

1976			
Jan.	1	Nottingham	H -
	3	London Scottish	A -
	10	Leicester	H -
	17	Wasps	H -
	24	Army	H -
	28	St. Lukes Coll.	H -
	31	Bridgend	A -
Feb.	6	Bristol	H -
	14	Bath	A -
	20	Swansea	H -
	28	Aberavon	H -
Mar.	6	Northampton	A -
	10	Cheltenham	A -
	13	Richmond	H -
	17	Newbridge	A -
	20	Guys Hospital	A -
	24	Abertillery	A -
	27	Saracens	H -
	31	Cardiff	A -
Apr.	7	Newport	A -
	10	Ebbw Vale	H -
	15	Lydney	A -
	17	Headingley	H -
	19	Birkenhead Park	H -
	24	Torquay Ath.	A -
May	1	Sale	A -

The First-Aid Service on this ground is provided voluntarily by
The City of Gloucester Division, St. John Ambulance Brigade

CLIFTON Lavender and Black

- Full Back
15. N. Berry
- Three Quarters
14. K. Lowe *
13. D. Lewis
12. K. Bartlett
11. A. Peszynski
- Half Backs
10. C. Morley
9. P. Smith
- Forwards
1. D. Mansfield
2. S. Luxmore
3. D. Rogers (Capt.)
4. C. Jenkins
5. P. Brown
6. D. Pope
8. A. Watson
7. P. Donovan



WESTGATE motorhouse

DAIMLER * JAGUAR * ROVER * TRIUMPH

Telephone: 34581





WELCOME TO CLIFTON

This afternoon we extend a particularly warm welcome to Clifton, our old friends and neighbours from "down south", whose insistence on playing open, constructive rugby always makes them popular visitors.

Clifton only appear once on Gloucester's fixture list, on an alternate home and away basis, and last season at Eastfield Road, the Cherry and Whites were made to fight hard for their victory by 12 points to nil in an absorbing tussle. We look forward to another enjoyable game today.



KINGSHOLM KACKLE Great win

Although the lads left it until the later stages before accounting for Newport last Saturday it was indeed a great win over the powerful Gwent

side and suggests that they are rapidly moving up into top gear after those uncertainties earlier in the season.

The County selectors were obviously impressed, for late withdrawals from the Gloucestershire team locked in battle with Cornwall at Redruth this afternoon brought in two more Gloucester players. There was splendid news this week that Chris Williams had expressed a desire to join the club; if, therefore, we are presumptuous enough to consider him a Gloucester player, it means that the Cherry and Whites supply the entire Gloucestershire back division this afternoon. And it raises a very interesting question from some of our older supporters and members — when, if ever, did the County last field an all-Gloucester back division in a championship match?



Cup match

It has now been confirmed that Gloucester will meet Plymouth Albion in their John Player Cup first round match at the Beacon Park on Saturday, November 15th. Arrangements are in hand to run a supporters' coach from Kingsholm and applications are already "rolling in merrily." Those wishing to book seats on the coach are

asked to contact Jim Holder in the Social Club as soon as possible.



Next matches

Gloucester's next match is Wednesday evening, when Pontypool, the Welsh club champions, are the visitors to Kingsholm, kick-off, as usual, at 7.00 p.m. Next Saturday, November 1st, they embark on their travels again with the match against Leicester at Welford Road, though United will be at Kingsholm, where they meet the "Tigers" Extra 1st XV, (3.00 p.m.)

Arthur Russell

Congratulations

It is gratifying to see so many Gloucester players included in the squad from which the Western Counties' side to meet the Australians at Bristol on Wednesday evening, November 26th, will be selected. Congratulations to them all, particularly to our young talented player, Richard Mogg, who has had what one might term a meteoric rise in fame in the past week.



FOR ALL YOUR PROPERTY REQUIREMENTS

Roy Long & Partners

House, Land and Estate Agents

22 Worcester Street, Gloucester

Telephone: 0452-35962/3

PERSONAL SERVICE ASSURED