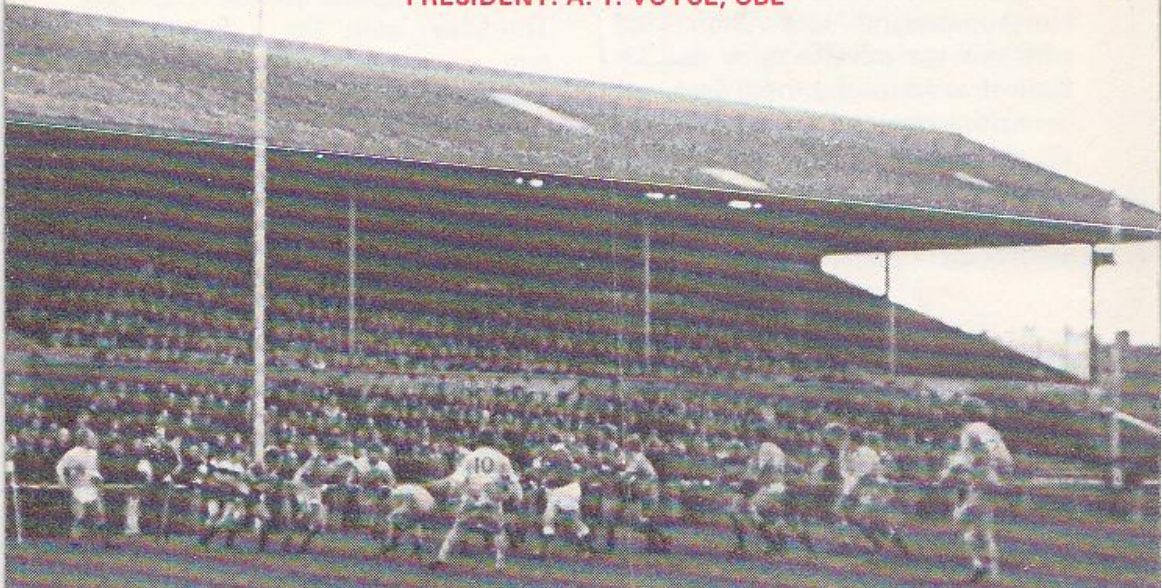




GLOUCESTER RUGBY FOOTBALL CLUB
Founded 1873
PRESIDENT: A. T. VOYCE, OBE



GLOUCESTER

V

LONDON IRISH

at
KINGSHOLM . GLOUCESTER
SATURDAY, 22nd NOVEMBER, 1975

Kick-off: 3.00 p.m.

Official Programme—6p



NORMAN P. PARTRIDGE (INSURANCE BROKERS) LTD.

1 BARTON STREET (corner of Clarence Street) GLOUCESTER
Telephone: 32088 and 34920

Free Advice
on all
Insurances

GLOUCESTER

Cherry and White

- Full Back
15. **R. Etheridge** *
- Three Quarters
14. **J. Dix** *
13. **R. Jardine** *
12. **S. P. Clewes**
11. **R. J. Clewes** *
- Half Backs
10. **R. Correia**
9. **P. Kingston** *†
- Forwards
1. **K. Richardson (Capt.)** *
2. **K. M. Nicholls**
3. **M. A. Curran**
4. **P. J. Winnel** *
5. **N. A. Jackson** *
6. **A. Auster**
8. **J. S. Jarrett** *
7. **J. H. Haines** *

Referee: D. J. MOORE (Leicester Society)

† International

§ Under-23 International

* County

First XV Fixtures

1975			
Sept. 3	Weston-s-Mare	A	37- 3
6	Broughton Pk	A	27-18
10	S. Wales Police	H	25-10
13	Coventry	H	13-13
20	Fylde	A	3-31
24	Stroud	A	30- 9
27	Bristol	A	0- 4
Oct. 1	Moseley	H	9-22
4	Bedford	A	10-18
8	British Police ...	H	31- 6
11	Harlequins	A	24-13
15	Cheltenham	H	40- 4
18	Newport	H	17-13
25	Clifton	H	41- 0
29	Pontypool	H	12-19
Nov. 1	Leicester	A	22-12
8	Exeter	H	76- 6
12	Cambridge Univ. A	12-32	
15	Plymouth Alb. A	9- 3	
22	London Irish ...	H	-
27	Loughborough	H	-
29	Oxford Univ.	H	-
Dec. 6	Moseley	A	-
13	Bath	H	-
20	Coventry	A	-
26	Lydney	H	-
27	Newbridge	H	-

First XV Fixtures

1976			
Jan. 1	Nottingham ...	H	-
3	London Scottish	A	-
10	Leicester	H	-
17	Wasps	H	-
24	Army	H	-
28	St. Lukes Coll.	H	-
31	Bridgend	A	-
Feb. 6	Bristol	H	-
14	Bath	A	-
20	Swansea	H	-
28	Aberavon	H	-
Mar. 6	Northampton	A	-
10	Cheltenham ...	A	-
13	Richmond	H	-
17	Newbridge	A	-
20	Guys Hospital	A	-
24	Abertillery ...	A	-
27	Saracens	H	-
31	Cardiff	A	-
Apr. 7	Newport	A	-
10	Ebbw Vale	H	-
15	Lydney	A	-
17	Headingley ...	H	-
19	Dirkenhead Park	H	-
24	Torquay Ath.	A	-
May 1	Sale	A	-

The First-Aid Service on this ground is provided voluntarily by
The City of Gloucester Division, St. John Ambulance Brigade

LONDON IRISH

Green

- Full Back
15. **D. Spring**
- Three Quarters
14. **C. Courtenay**
13. **B. Douglas**
12. **P. Frackleton**
11. **D. Donovan**
- Half Backs
10. **H. Condon**
9. **J. Frost**
- Forwards
1. **A. Newbury**
2. **K. Kennedy** †
3. **J. Hill**
4. **S. Richardson**
5. **M. Molloy** †
6. **J. O'Driscoll**
8. **M. Poole**
7. **P. Crotty**



WESTGATE motorhouse

DAIMLER * JAGUAR * ROVER * TRIUMPH

Telephone: 34581





WELCOME TO THE 'IRISH'

This afternoon we extend a cordial welcome to London Irish who unfortunately, are only met once each season. The corresponding fixture last year in London was cancelled, but we look forward to another entertaining game with our old rivals today, fully confident that in spite of the heavy demands on the club by Gloucestershire, locked in battle with Somerset at Taunton, our brilliant "reserves" — in name only, one might add — will again take affairs in their stride, as they did against Clifton and Exeter on the other County dates. We sincerely trust our London Irish friends enjoy their brief visit to our fair city!



KINGSHOLM KACKLE Up For T' Cup!

Congratulations to the lads on their great win over Plymouth Albion at Beacon Park in the first round of the John Player Cup competition; a success that ensures £500 for the club, irrespective of their fortunes

in the next round. Such were the atrocious conditions at Plymouth that the match would doubtless have been cancelled had it not been a Cup game.

In response to many requests we publish the financial rewards available because of the sponsorship of the increasingly popular competition. The two finalists will each receive £2,000; the losing semi-finalists £1,250; losing quarter-finalists £750 each; losers in second round £500 each; losers in first round £400 each. Even the 14 County Cup winners who did not reach the first round received £250 each. An extremely handsome "windfall"!

In addition the net receipts from the semi-finals and final will be distributed as follows:— Finalists 10%; losing semi-finalists 5%; the 28 other clubs 2½%. Success will certainly pay huge dividends!

Numerous enquiries have also been made about the draw for the second round. This will not be made until the end of the year, for clubs have until December 27 to complete the the first round. And as the draw will be on a national basis, some of the clubs drawn away face long journeys, for Gosforth, Wakefield, Roundhay, London Welsh, Rosslyn Park and our visitors this afternoon, London Irish, are among the clubs already through to the second round.



Tour

Arrangements are in hand for a tour of either France or Italy for the lads at the end of the season, probably in early May. It is hoped to play two matches against first-class clubs on the continent, with one also for the United. Alan Brinn is chairman of the sub-committee set up to explore the possibilities, and a club member, Northumberland lock John Hall, who owns a travel agency and has little time for rugby these days, will be visiting the continent at the end of the month to try and finalise plans.



Champions Again?

It is hoped to let supporters know how Gloucestershire are faring in the county match against Somerset

at Taunton this afternoon. Current form suggests victory for the champions and would give them the group title for the seventh successive season.

Rich Fare

There is more rich rugger fare at Kingsholm next week, for on Thursday, with the kick-off at 7 p.m., Loughborough Colleges are the visitors, while next Saturday the Cherry and Whites entertain Oxford University, who always regard this game as their tough finale prior to the 'Varsity match, which this season is on Tuesday, December 9.

Next Friday evening brings the first monthly draw of the popular "250 Club", made in the Social Club at 9 p.m.

Arthur Russell



FOR ALL YOUR PROPERTY REQUIREMENTS

Roy Long & Partners

House, Land and Estate Agents

22 Worcester Street, Gloucester

Telephone: 0452-35962/3

PERSONAL SERVICE ASSURED