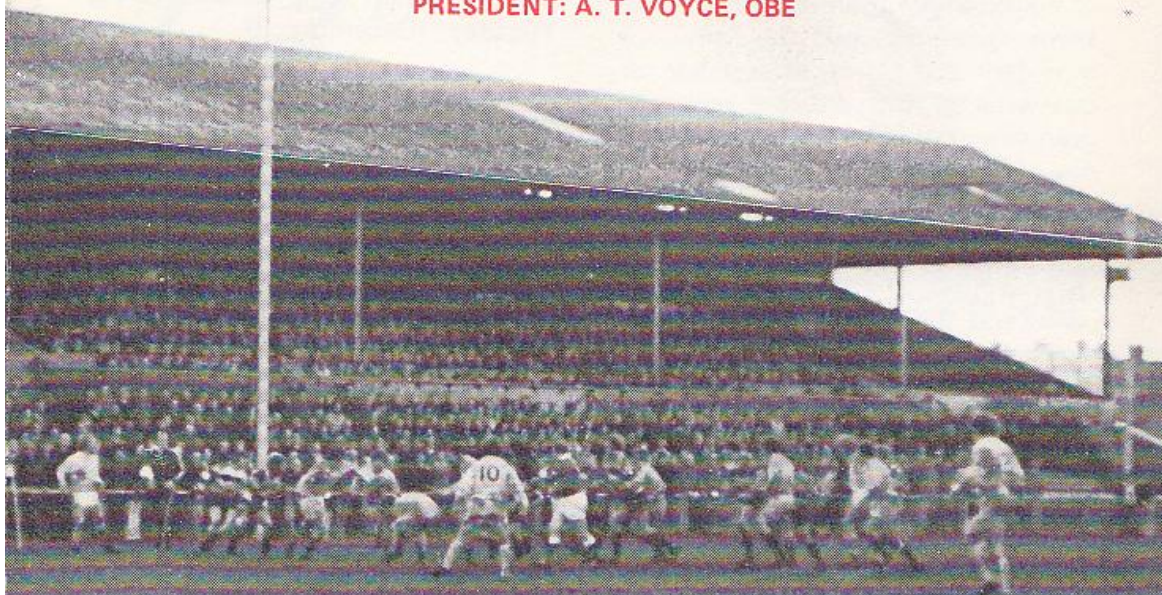




**GLOUCESTER RUGBY FOOTBALL CLUB**

Founded 1873

PRESIDENT: A. T. VOYCE, OBE



# GLOUCESTER

V

# LOUGHBOROUGH

COLLEGES

at

KINGSHOLM . GLOUCESTER

THURSDAY, 27th NOVEMBER, 1975

Kick-off: 7.00 p.m.

*Official Programme—6p*





# NORMAN P. PARTRIDGE (INSURANCE BROKERS) LTD.

1 BARTON STREET (corner of Clarence Street) GLOUCESTER  
Telephone: 32088 and 34920

Free Advice  
on all  
Insurances

## GLOUCESTER

Cherry and White

- Full Back
15. P. Butler \*†
- Three Quarters
14. R. J. Clewes \*
13. B. Vine
12. R. R. Mogg \*
11. J. Dix \*
- Half Backs
10. R. Correia
9. P. Kingston \*†
- Forwards
1. K. Richardson \*
2. F. C. Reed \*
3. M. A. Burton (Capt.) \*†
4. P. J. Winnel \*
5. J. H. Fidler \*
6. J. H. Haines \*
8. J. A. Watkins \*†
7. R. Smith \*

Referee: M. MORGAN (Bristol Society)

† International

§ Under-23 International

\* County

### First XV Fixtures

1975			
Sept. 3	Weston-s-Mare	A	37- 3
6	Broughton Pk	A	26-18
10	S. Wales Police	H	25-10
13	Coventry ...	H	13-13
20	Fylde ...	A	3-31
24	Stroud ...	A	30- 9
27	Bristol ...	A	0- 4
Oct.			
1	Mosley ...	H	9-22
4	Bedford ...	A	10-18
8	British Police ...	H	31- 6
11	Harlequins ...	A	24-13
15	Cheltenham ...	H	40- 4
18	Newport ...	H	17-13
25	Clifton ...	H	41- 0
29	Pontypool ...	H	12-19
Nov.			
1	Leicester ...	A	22-12
8	Exeter ...	H	76- 6
12	Cambridge Univ. A		12-32
15	Plymouth Alb. A		9- 3
22	London Irish ...	H	7-21
27	Loughborough	H	—
29	Oxford Univ.	H	—
Dec.			
6	Mosley ...	A	—
13	Bath ...	H	—
20	Coventry ...	A	—
26	Lydney ...	H	—
27	Newbridge ...	H	—

### First XV Fixtures

1976			
Jan. 1	Nottingham ...	H	—
3	London Scottish	A	—
10	Leicester ...	H	—
17	Wasps ...	H	—
24	Army ...	H	—
28	St. Lukes Coll.	H	—
31	Bridgend ...	A	—
Feb.			
6	Bristol ...	H	—
14	Bath ...	A	—
20	Swansea ...	H	—
28	Aberavon ...	H	—
Mar.			
6	Northampton	A	—
10	Cheltenham ...	A	—
13	Richmond ...	H	—
17	Newbridge ...	A	—
20	Guys Hospital	A	—
24	Abertillery ...	A	—
27	Saracens ...	H	—
31	Cardiff ...	A	—
Apr.			
7	Newport ...	A	—
10	Ebbw Vale ...	H	—
15	Lydney ...	A	—
17	Headingley ...	H	—
19	Birkenhead Park	H	—
24	Torquay Ath.	A	—
May			
1	Sale ...	A	—

## LOUGHBOROUGH COLLEGES

Maroon and White

- Full Back
15. S. Tickle
- Three Quarters
14. P. Beak
13. W. Curley
12. C. Woodward
11. K. Williams
- Half Backs
10. A. Phillips
9. J. Hartley
- Forwards
1. J. Sass
2. C. Weston
3. K. Lucwszyn
4. N. Gillingham (Capt.)
5. J. Thornton
6. K. Douglas
8. D. Brown
7. C. O'Callaghan

The First-Aid Service on this ground is provided voluntarily by  
The City of Gloucester Division, St. John Ambulance Brigade



# WESTGATE motorhouse

DAIMLER \* JAGUAR \* ROVER \* TRIUMPH

Telephone: 34581





## WELCOME TO THE 'STUDENTS'

We extend a hearty welcome this evening to Loughborough Colleges, whose insistence on playing fast, open rugby makes them popular visitors to Kingsholm. An inclement spell of weather in February caused last season's fixture with the Students to be cancelled, which perhaps tends to whet the appetite this evening as we look forward to an entertaining tussle.



## KINGSHOLM KACKLE

### Champions Again!

Congratulations to our County — and particularly to Peter Butler, whose prodigious goal-kicking again steered them safely through — on their victory over Somerset at

Taunton last Saturday. There were long periods of apprehension before the Champions eventually clinched the South-West title — for the seventh successive season! With such an amazing record it would surely be churlish to tender even a word of criticism, even if they did not rise to the heights at Taunton.

Supporters are naturally anxious to know whom Gloucestershire meet in the quarter-final, but that is a question that may not be answered for several weeks. For the remaining matches in the Southern group are due to be played next Wednesday, when the deciding game could well be that between Hertfordshire and Dorset-Wilts at Croxley Green.



The other fixture is at Maidenhead, where Berkshire take on Oxfordshire, who are out of the reckoning.

Unless Oxfordshire spring a surprise by defeating Berkshire, the South group champions will have to be decided by a play-off. In any event, the quarter-final means an away game for Gloucestershire, so at the moment supporters can only guess at the venue.







### Dark Blues

There is more rich rugger fare at Kingsholm on Saturday, when Gloucester entertain Oxford University with the usual kick-off at 3 p.m. The Dark Blues always regard this late November fixture with the Cherry and Whites as their tough finale prior to the University match, which this season is on Tuesday, December 9.

### Cup Results

With three more John Player Cup first round matches played last weekend the up-to-date list of clubs who have already won through to the second round are:

Coventry, Gosforth, Wakefield, Gloucester, Bristol, London Welsh, Havant (a Hampshire club), Roundhay, Moseley, Liverpool, Rosslyn Park, London Irish. The remaining four first round matches still to be played are: Penryn v. St. Luke's College; London Scottish v. Wasps; Northampton v. Bedford (the holders); Orrell v. Sale.

### 250 Club

Finally, all members of the "250 Club" are reminded that the first monthly draw will be held in the Social Club lounge tomorrow evening at 9 o'clock.

Arthur Russell



*FOR ALL YOUR PROPERTY REQUIREMENTS*

## **Roy Long & Partners**

**House, Land and Estate Agents**

22 Worcester Street, Gloucester

Telephone: 0452-35962/3

*PERSONAL SERVICE ASSURED*