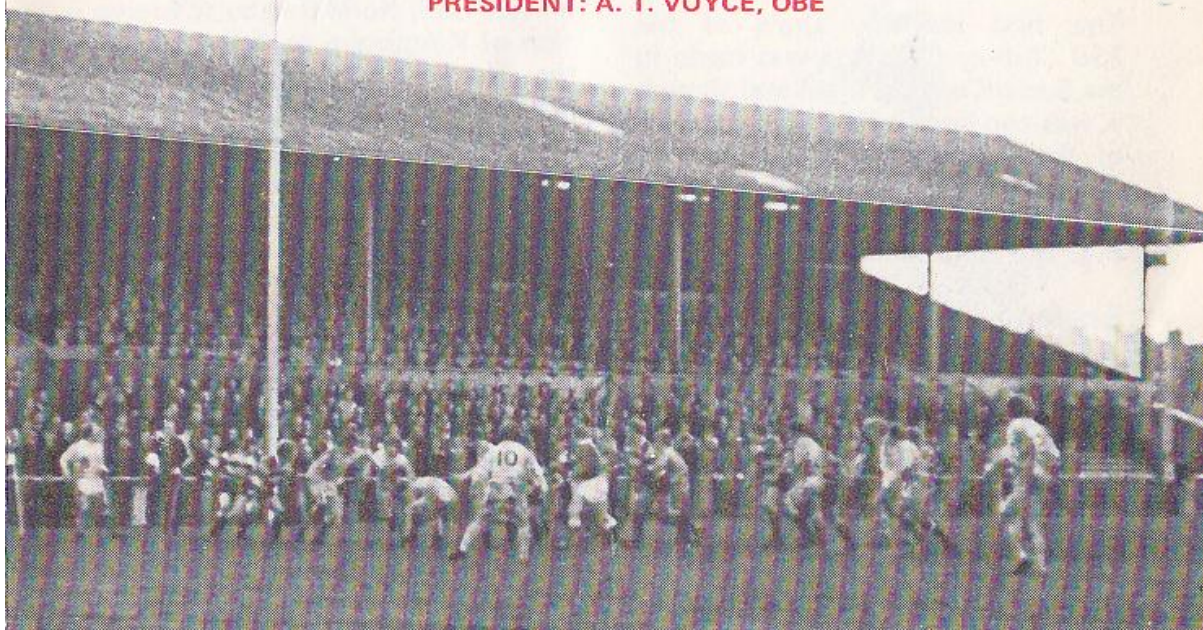




**GLOUCESTER RUGBY FOOTBALL CLUB**

Founded 1873

PRESIDENT: A. T. VOYCE, OBE



# GLOUCESTER

v  
**OXFORD**

UNIVERSITY

at

KINGSHOLM . GLOUCESTER

SATURDAY, 29th NOVEMBER, 1975

Kick-off: 3 p.m.

*Official Programme—6p*



# NORMAN P. PARTRIDGE (INSURANCE BROKERS) LTD.

1 BARTON STREET (corner of Clarence Street) GLOUCESTER  
Telephone: 32088 and 34920

Free Advice  
on all  
Insurances

## GLOUCESTER

Cherry and White

Full Back

15. P. E. Butler \*†

Three Quarters

14. R. J. Clewes \*

13. B. Vine \*

12. R. R. Mogg \*

11. J. Dix \*

Half Backs

10. C. G. Williams \*

9. P. Kingston \*†

Forwards

1. K. Richardson \*

2. F. C. Reed \*

3. M. A. Burton (Capt.) \*†

4. P. J. Winnel \*

5. J. H. Fidler \*

6. J. A. Watkins \*†

8. J. S. Jarrett \*

7. R. Smith \*

Referee: K. D. BIDDER (Wales)

† International

‡ Under-23 International

\* County

\*\* Blues

### First XV Fixtures

1975			
Sept.	3	Weston-s-Mare	A 37- 3
	6	Broughton Pk	A 26-18
	10	S. Wales Police	H 25-10
	13	Coventry ...	H 13-13
	20	Fylde ...	A 3-31
	24	Stroud ...	A 30- 9
	27	Bristol ...	A 0- 4
Oct.	1	Moseley ...	H 9-22
	4	Bedford ...	A 10-18
	8	British Police	H 31- 6
	11	Harlequins ...	A 24-13
	15	Cheltenham ...	H 40- 4
	18	Newport ...	H 17-13
	25	Clifton ...	H 41- 0
	29	Pontypool ...	H 12-19
Nov.	1	Leicester ...	A 22-12
	8	Exeter ...	H 76- 6
	12	Cambridge Univ.	A 12-32
	15	Plymouth Alb.	A 9- 3
	22	London Irish ...	H 7-21
	27	Loughborough	H 16-22
	29	Oxford Univ.	H -
Dec.	6	Moseley ...	A -
	13	Bath ...	H -
	20	Coventry ...	A -
	26	Lydney ...	H -
	27	Newbridge ...	H -

### First XV Fixtures

1976			
Jan.	1	Nottingham ...	H -
	3	London Scottish	A -
	10	Leicester ...	H -
	17	Wasps ...	H -
	24	Army ...	H -
	28	St. Lukes Coll.	H -
	31	Bridgend ...	A -
Feb.	6	Bristol ...	H -
	14	Bath ...	A -
	20	Swansea ...	H -
	28	Aberavon ...	H -
Mar.	6	Northampton	A -
	10	Cheltenham ...	A -
	13	Richmond ...	H -
	17	Newbridge ...	A -
	20	Guys Hospital	A -
	24	Abertillery ...	A -
	27	Saracens ...	H -
	31	Cardiff ...	A -
Apr.	7	Newport ...	A -
	10	Ebbw Vale ...	H -
	15	Lydney ...	A -
	17	Headingley ...	H -
	19	Birkenhead Park	H -
	24	Torquay Ath.	A -
May	1	Sale ...	A -

The First-Aid Service on this ground is provided voluntarily by  
The City of Gloucester Division, St. John Ambulance Brigade

## OXFORD UNIVERSITY

Dark Blue

Full Back

15. N. P. Quinnan

Three Quarters

14. D. Willis

13. C. P. Kent \*\*

12. T. Bryan

11. B. Clements

Half Backs

10. A. W. Ellis

9. R. Hood

Forwards

1. E. C. Horne

2. P. S. Rees \*\*

3. P. Tonge

4. D. S. M. MacDonald \*\*

5. R. Davis \*\*†

6. P. King

8. D. A. MacDonald †

7. C. Shaw (Capt.) \*\*



# WESTGATE motorhouse

DAIMLER \* JAGUAR \* ROVER \* TRIUMPH

Telephone: 34581





## WELCOME TO THE DARK BLUES

It is nearly a century ago that Matthew Arnold described Oxford as a home of lost causes and forsaken beliefs; but then, he was not to know that the city's famous University had founded a rugby club already starting a long and distinguished history.

And it is to that same club that we extend a particularly cordial welcome this afternoon. The Dark Blues pay Gloucester the great honour of regarding this annual late November fixture as their final searching test prior to their own all-important event of the season — the 'Varsity Match, to be played this year on Tuesday, December 9.

The corresponding match between the two clubs last season, on Saturday, November 30, 1974, at Iffley Road began — and ended — sadly for Gloucester, who were so lethargic in the early stages that they conceded three tries almost before they had shaken the A40 dust from their eyes.

A marked improvement later was of little avail, for the Dark Blues won convincingly by 21 points to 13. Revenge is sweet, the old proverb tells us, so victory for the Cherry and Whites this afternoon is indeed

a consummation devoutly to be wished. But whatever the outcome, we sincerely trust our popular visitors enjoy their brief visit to our own fair city and look forward to the entertaining game they invariably provide.



## KINGSHOLM KACKLE Big Disappointment

It was a big disappointment to their thousands of supporters to see the Western Counties, after such a tremendous display by their pack, succumb to the Australians at Bristol on Wednesday evening. While blame for the defeat has been laid on the shoulders of the 'make-shift' back division, it would be churlish to deny credit to the Wallabies for their powerful decisive running. And, after all, as Byron tells us, critics all are ready made.

## Sunday Telegraph

With the John Player Cup competition creating such immense interest, particularly in such rugby strongholds as Gloucester, supporters will be delighted to know that tomorrow's *Sunday Telegraph* will contain a special feature article on the fortunes and records over the past ten years of the first-class clubs that have figured in that newspaper's unofficial 'league' table.

Not only will it prove of interest to those clubs still left in this season's John Player Cup; it will give an

overall 'form guide' for the clubs taking part in the proposed new 'merit table' competition due to start next season. Further, most of the statistics have been compiled by one of our own members — that fanatic rugby and cricket enthusiast, Gordon Cooke.

### **250 Club**

The first monthly draw of the *250 Club* competition was made in the Social Club last night and though it was too late to publish the names of the winners in these notes, no doubt our venerable and erudite commentator will announce them over the loudspeaker this afternoon.

### **England Trial**

Next Saturday brings one of the toughest assignments of the season for Gloucester, who travel to meet the highly successful Moseley side, so far unbeaten at the Reddings. Indeed, the formidable Midlands club has only suffered one defeat this season.

Should enough support be forthcoming a coach will leave the Social

Club next Saturday for the game at Moseley, contact Jim Holder in the Social Club before and after the game for details. A deposit must be paid when booking a seat.

The next home match should have been against Bath on December 13, but this fixture has been postponed as, of course, on that date Gloucester has been honoured by the selection of Kingsholm as the venue for the second England trial match (kick-off 3.00 p.m.).

Gloucester's next appearance at Kingsholm will not be until Boxing Day, when Lydney will be the traditional visitors.

Arthur Russell



*FOR ALL YOUR PROPERTY REQUIREMENTS*

## **Roy Long & Partners**

**House, Land and Estate Agents**

22 Worcester Street, Gloucester

Telephone: 0452-35962/3

*PERSONAL SERVICE ASSURED*