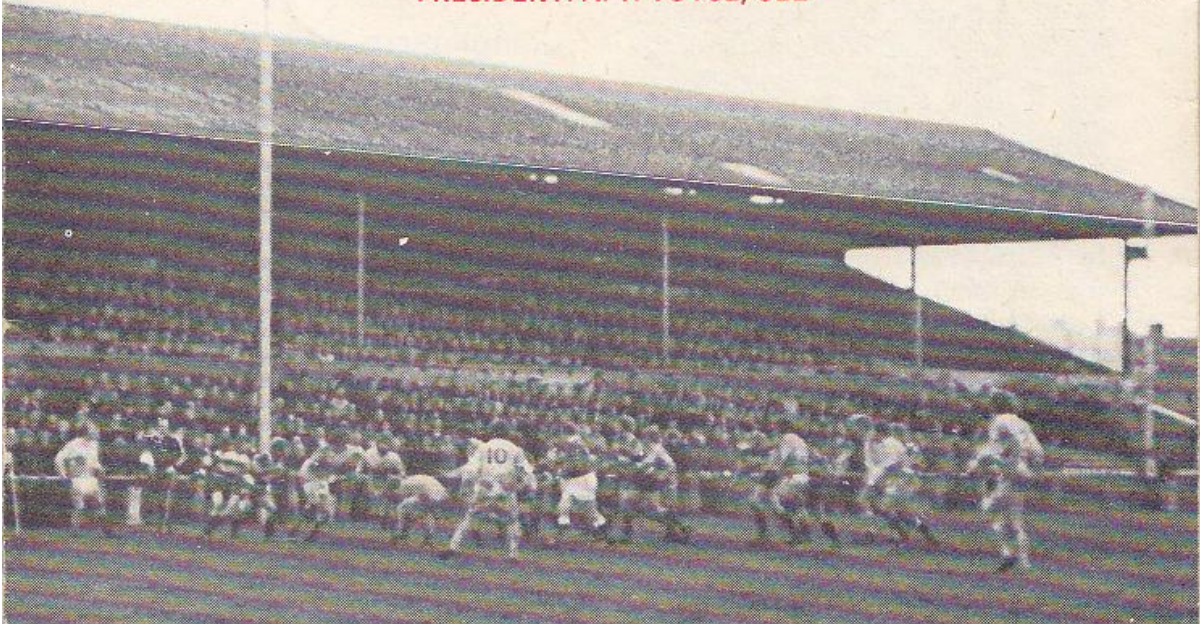




GLOUCESTER RUGBY FOOTBALL CLUB

Founded 1873

PRESIDENT: A. T. VOYCE, OBE



GLOUCESTER

V

LYDNEY

at

KINGSHOLM . GLOUCESTER

FRIDAY, 26th DECEMBER, 1975

Kick-off: 3 p.m.

Official Programme—6p



NORMAN P. PARTRIDGE (INSURANCE BROKERS) LTD.

1 BARTON STREET (corner of Clarence Street) GLOUCESTER
Telephone: 32088 and 34920

Free Advice
on all
Insurances

GLOUCESTER

Cherry and White

- Full Back
15. P. Butler *†
- Three Quarters
14. R. Clewes *
13. R. Mogg *
12. B. Vine *
11. R. Jardine *
- Half Backs
10. C. Williams *
9. P. Kingston *†
- Forwards
1. M. Burton (Capt.) *†
2. F. Reed *
3. K. Richardson *
4. P. Winnel *
5. J. Fidler *
6. J. Watkins *†
8. A. Auster *
7. J. Haines *

Referee: F. A. SMITH (Wales)

- † International
§ Under-23 International
* County

First XV Fixtures

1975	3	Weston-s-Mare	A	37-3
Sept.	6	Broughton Pk	A	26-18
	10	S. Wales Police	H	25-10
	13	Coventry ...	H	13-13
	20	Fylde ...	A	3-31
	24	Stroud ...	A	30-9
	27	Bristol ...	A	0-4
Oct.	1	Moseley ...	H	9-22
	4	Bedford ...	A	10-18
	8	British Police ...	H	31-6
	11	Harlequins ...	A	24-13
	15	Cheltenham ...	H	40-4
	18	Newport ...	H	17-13
	25	Clifton ...	H	41-0
	29	Pontypool ...	H	12-19
Nov.	1	Leicester ...	A	22-12
	8	Exeter ...	H	76-6
	12	Cambridge Univ.	A	12-32
	15	Plymouth Alb.	A	9-3
	22	London Irish ...	H	7-21
	27	Loughborough	H	16-22
	29	Oxford Univ.	H	22-6
Dec.	6	Moseley ...	A	26-18
	13	Bath ...	H	18-15
	20	Coventry ...	A	15-18
	26	Lydney ...	H	-
	27	Newbridge ...	H	-

First XV Fixtures

1976	1	Nottingham ...	H	-
Jan.	3	London Scottish	A	-
	10	Leicester ...	H	-
	17	Wasps ...	H	-
	24	Army ...	H	-
	28	St. Lukes Coll.	H	-
	31	Bridgend ...	A	-
Feb.	6	Bristol ...	H	-
	14	Bath ...	A	-
	20	Swansea ...	H	-
	28	Aberavon ...	H	-
Mar.	6	Northampton	A	-
	10	Cheltenham ...	A	-
	13	Richmond ...	H	-
	17	Newbridge ...	A	-
	20	Guys Hospital	A	-
	24	Abertillery ...	A	-
	27	Saracens ...	H	-
	31	Cardiff ...	A	-
Apr.	7	Newport ...	A	-
	10	Ebbw Vale ...	H	-
	15	Lydney ...	A	-
	17	Headingley ...	H	-
	19	Birkenhead Park	H	-
	24	Torquay Ath.	A	-
May	1	Sale ...	A	-

The First-Aid Service on this ground is provided voluntarily by
The City of Gloucester Division, St. John Ambulance Brigade

LYDNEY

Black and White

- Full Back
15. K. Rodway
- Three Quarters
14. A. Cole
13. D. Brookes
12. N. Holford
11. J. Lambert
- Half Backs
10. I. Wilkins
9. P. Howell
- Forwards
1. C. Sargent (Capt.)
2. P. Price
3. A. Brookes
4. T. Beale
5. E. White
6. W. Morris
8. J. Cooke
7. S. Collins



WESTGATE motorhouse

DAIMLER * JAGUAR * ROVER * TRIUMPH

Telephone: 34581





WELCOME TO THE "SEVERN-SIDERS"!

At the height of the festive season we again welcome as our Boxing Day visitors to Kingsholm our old friends, county neighbours Lydney, who took over this annual holiday fixture from Old Merchant Taylors last year.

In the corresponding match last Boxing Day the "Severn-Siders", as Lydney are popularly known, provided an entertaining game worthy of the festive season, Gloucester eventually running out winners by 29 points to 10.

This season Lydney have been badly hit by injuries, but with most of their stalwarts back in lively action they have been displaying some of their best form recently, ably led by that portly and popular prop, Gordon Sargent. We look forward, then, to another thoroughly enjoyable and entertaining tussle with our old friends this afternoon.



KINGSHOLM KACKLE Extensions To Club

As supporters will have realised from the "road work" on the car park considerable changes are being made, with extensions being added to the existing Social Club. A new skittle alley will be laid and it is hoped that the "new look" club will be completed early in the new year.



250 Club

The "250 Club" monthly draw is usually made on the last Friday of each month; but as this is Boxing Day the December draw will be in the Social Club tomorrow evening and the names of the winners announced in the programme notes for the match against Nottingham on New Year's Day.

John Player Cup Results

With three more John Player Cup first round matches played during the past two weeks, including that in which Bedford, last season's national knock-out cup winners, were defeated by Northampton, the second round contestants are now known with the exception of one game — between Orrell and Sale — still to be played at the time of going to press, as it were.

The draw for the second round will be made in the next few days and the 15 clubs already through are Coventry, Gosforth, Wakefield, Gloucester, Bristol, London Welsh, Havant (a small Hampshire club), Roundhay, Moseley, Liverpool, Rosslyn Park, London Irish, Penryn, London Scottish and, of course, Northampton. The burning question is — whom will Gloucester be drawn against.



Compliments of the Season

In conclusion the club officials, committee-men and players join in wishing you all the compliments of the season and thank you for your continued support which is so deeply appreciated.

Arthur Russell



FOR ALL YOUR PROPERTY REQUIREMENTS

Roy Long & Partners

House, Land and Estate Agents

22 Worcester Street, Gloucester

Telephone: 0452-35962/3

PERSONAL SERVICE ASSURED