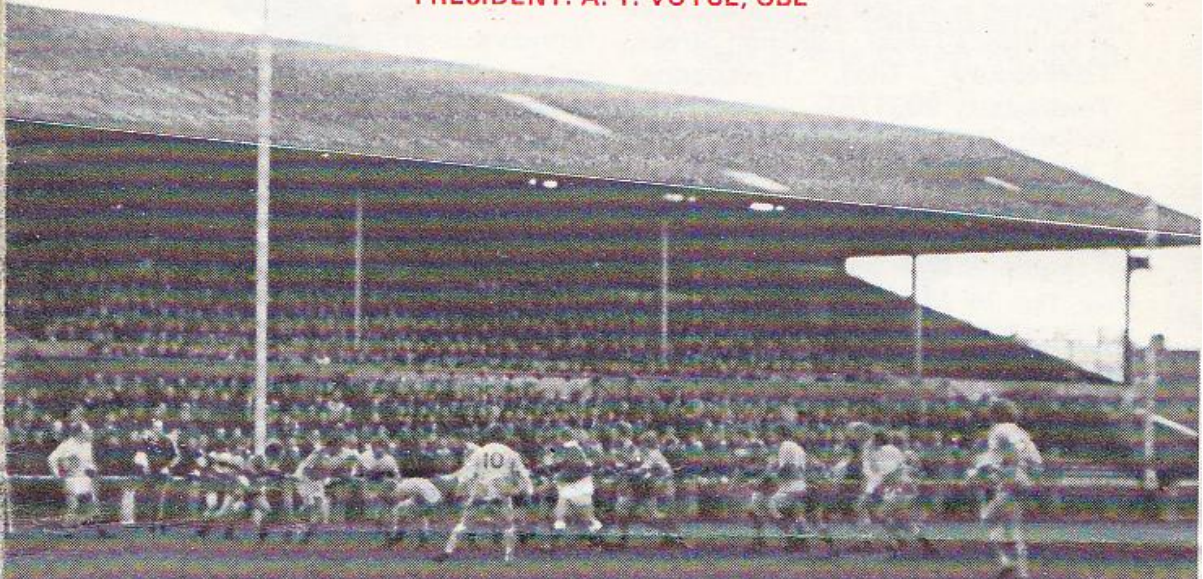




**GLOUCESTER RUGBY FOOTBALL CLUB**

Founded 1873

PRESIDENT: A. T. VOYCE, OBE



# GLOUCESTER

V

# ARMY

at

KINGSHOLM . GLOUCESTER

SATURDAY, 24th JANUARY, 1976

Kick-off: 3.00 p.m.

*Official Programme—6p*



**NORMAN P. PARTRIDGE (INSURANCE BROKERS) LTD.**  
 1 BARTON STREET (corner of Clarence Street) GLOUCESTER  
 Telephone: 32088 and 34920

Free Advice  
 on all  
 Insurances

**GLOUCESTER**  
 Cherry and White

- Full Back  
 15. P. E. Butler \*†
- Three Quarters  
 14. R. J. Clewes \*  
 13. B. J. Vine \*  
 12. R. Jardine \*
- Half Backs  
 10. D. Pointon \*  
 9. P. Kingston \*†
- Forwards  
 1. K. Richardson \*  
 2. R. L. Daldry \*  
 3. M. A. Burton (Capt.) \*†  
 4. P. J. Winnel \*  
 5. J. H. Fidler \*  
 6. J. A. Watkins \*†  
 8. M. J. Potter \*  
 7. R. Smith \*

Referee: D. E. COOMBES (London Society)

- † International  
 § Under-23 International  
 \* County

*First XV Fixtures*

1975		
Sept. 3	Weston-s-Mare	A 37- 3
6	Broughton Pk	A 26-18
10	S. Wales Police	H 25-10
13	Coventry ...	H 13-13
20	Fylde ...	A 3-31
24	Stroud ...	A 30- 9
27	Bristol ...	A 0- 4
Oct. 1	Moseley ...	H 9-22
4	Bedford ...	A 10-18
8	British Police ...	H 31- 6
11	Harlequins ...	A 24-13
15	Cheltenham ...	H 40- 4
18	Newport ...	H 17-13
25	Clifton ...	H 41- 0
29	Pontypool ...	H 12-19
Nov. 1	Leicester ...	A 22-12
8	Exeter ...	H 76- 6
12	Cambridge Univ.	A 12-32
15	Plymouth Alb.	A 9- 3
22	London Irish ...	H 7-21
27	Loughborough	H 16-22
29	Oxford Univ.	H 22- 6
Dec. 6	Moseley ...	A 26-18
13	Bath ...	H 18-15
20	Coventry ...	A 15-18
26	Lydney ...	H 44- 7
27	Newbridge ...	H 29- 3

*First XV Fixtures*

1976		
Jan. 1	Nottingham ...	H 17- 3
3	London Scottish	A 0-20
10	Leicester ...	H 4- 9
16	Wasps ...	H 16- 6
21	Bristol ...	H 15-15
24	Army ...	H -
28	St. Lukes Coll.	H -
31	Bridgend ...	A -
Feb. 14	Bath ...	A -
20	Swansea ...	H -
28	Aberavon ...	H -
Mar. 6	Northampton	A -
10	Cheltenham ...	A -
13	Richmond ...	H -
17	Newbridge ...	A -
20	Guys Hospital	A -
24	Abertillery ...	A -
27	Saracens ...	H -
31	Cardiff ...	A -
Apr. 7	Newport ...	A -
10	Ebbw Vale ...	H -
15	Lydney ...	A -
17	Headingley ...	H -
19	Birkenhead Park	H -
24	Torquay Ath.	A -
May 1	Sale ...	A -

The First-Aid Service on this ground is provided voluntarily by  
 The City of Gloucester Division, St. John Ambulance Brigade

**THE ARMY**  
 Red

- Full Back  
 15. Sgt. M. Cuss
- Three Quarters  
 14. Lt. D. J. Kerr  
 13. W.O.2 P. Robinson  
 12. L.Cpl. S. G. Jackson  
 11. Capt. D. B. Reynolds
- Half Backs  
 10. Cpl. J. H. Morgan  
 9. Lt. R. G. Bell
- Forwards  
 1. Capt. R. G. C. Campbell  
 2. Sgt. J. Mills  
 3. Pt. M. Mills  
 4. Capt. M. J. Bowles  
 5. Sig. S. Peacock  
 6. C.F.N. R. Spurrell  
 8. Capt. C. J. W. Gilbert (Capt.)  
 7. L.Sgt. R. Spring



**WESTGATE motorhouse**

DAIMLER \* JAGUAR \* ROVER \* TRIUMPH

Telephone: 34581





## WELCOME TO THE ARMY!

This afternoon we extend a cordial welcome to the Army, with whom fixtures, until last season, always appeared to have gremlins hovering round; for in recent years weather conditions have twice caused the matches to be cancelled, while on another occasion the quarter-final of the county championship took priority.

When the Army visited Kingsholm on Wednesday evening, January 22, of last year, Gloucester won a thoroughly enjoyable game by 19 – 13 after initial uncertainties. We trust there will be such another exciting tussle this afternoon.



## KINGSHOLM KACKLE That Incredible Match

Not readily will the thousands who saw it forget that incredible match against old rivals Bristol at Kingsholm on Wednesday evening. Even the vastly experienced referee who came under considerable criticism said he had never in his career known so many injuries in one game. That we can quite believe, for the club "Doc" was undoubtedly the busiest man of them all with three

players taken to hospital and eight others requiring treatment to wounds of varying degrees.

Unfortunately, many of those who were only able to read of the match at once assumed it was one glorious "punch-up" from the start, which is far from the truth; and the injuries were caused by the tough, even fierce, but legitimate approach of the players, who spared nothing in their efforts to beat the opposition.

We sincerely trust that all the lame and wounded will soon be back in action, though Bristol's Dave Sorrell and the Cherry and Whites' hooker, genial Fred Reed will be absent for some time. As most of our own supporters know, Fred fractured an arm in the forward fermentation.



## Anyone for South Africa?

Since the announcement of Gloucestershire's proposed tour of South Africa for three weeks in late May and early June, several supporters have shown an interest – indeed, have made enquiries – regarding the possibilities of accompanying the party.

John Hall, the former Gloucester and Northumberland lock forward who is proprietor of Gulliver's Travel, is quite prepared to organise such a tour for those enthusiasts who would like to combine rugby with a pleasant holiday, either for a fortnight or the whole of the three weeks of the County's itinerary.

He has already had a few enquiries and would like to hear from others who are contemplating such a rucker holiday in sunny climes. It is virtually impossible to quote prices at present, for these will depend on several factors, including the length of the tour and the numbers wishing to go, but the rough estimate is between £300 and £400. Anyone interested is invited to contact John at Gulliver's Travel, 135 High Street, Tewkesbury, Gos. (Telephone: Tewkesbury 293175).



### Club Programme

While bearing in mind the words of Henry V, "There's nothing so becomes a man as modest stillness and humility", it was indeed gratifying to see our old friend, Alan Gibson, lavishing praise on our Gloucester programme in his report

of last Wednesday evening's match in the *Times*. As most of us are recipients of far more brickbats than bouquets, perhaps this little "mention" may be forgiven, as it's all for the good of the club, as we say. Thank you, Alan!



### Next Match

Gloucester have another mid-week match next Wednesday, January 28, when popular St. Luke's College will be the visitors to Kingsholm, kick-off as usual at 7.00 p.m.

Arthur Russell



*FOR ALL YOUR PROPERTY REQUIREMENTS*

## **Roy Long & Partners**

House, Land and Estate Agents

22 Worcester Street, Gloucester

Telephone: 0452-35962/3

*PERSONAL SERVICE ASSURED*