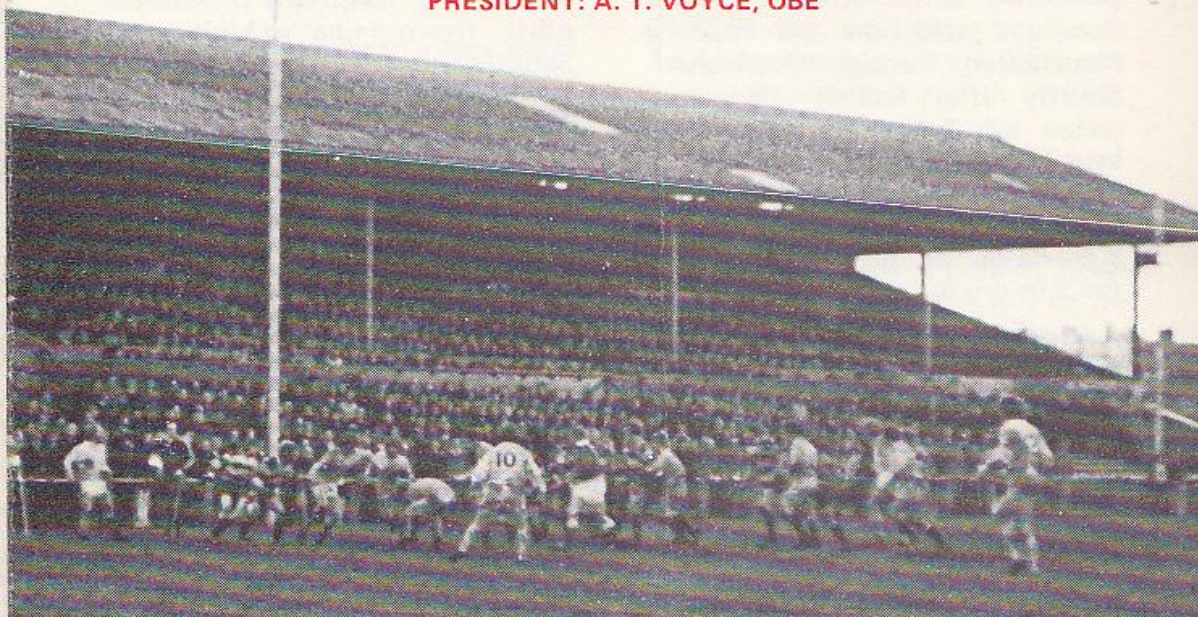




**GLOUCESTER RUGBY FOOTBALL CLUB**

Founded 1873

PRESIDENT: A. T. VOYCE, OBE



# GLOUCESTER

V

# ST. LUKE'S COLLEGE

WEDNESDAY, 28th JANUARY, 1976

at

KINGSHOLM · GLOUCESTER

Kick-off: 7.00 p.m.

*Official Programme—6p*





**NORMAN P. PARTRIDGE (INSURANCE BROKERS) LTD.**  
 1 BARTON STREET (corner of Clarence Street) GLOUCESTER  
 Telephone: 32088 and 34920

Free Advice  
 on all  
 Insurances

**GLOUCESTER**  
 Cherry and White

- Full Back  
 15. P. E. Butler \*†
- Three Quarters  
 14. R. J. Clewes \*  
 13. R. R. Mogg \*  
 12. B. J. Vine \*  
 11. R. Jardine \*
- Half Backs  
 10. D. Pointon \*  
 9. P. Kingston \*†
- Forwards  
 1. K. Richardson \*  
 2. R. L. Daldry \*  
 3. M. A. Burton (Capt.) \*†  
 4. A. Brinn \*†  
 5. J. H. Fidler \*  
 6. J. A. Watkins \*†  
 8. M. J. Potter \*  
 7. R. Smith \*

Referee: P. RICHMOND (Somerset Society)

- † International  
 ‡ Under-23 International  
 \* County

*First XV Fixtures*

1975	3	Weston-s-Mare	A	37-3
Sept.	6	Broughton Pk	A	26-18
	10	S. Wales Police	H	25-10
	13	Coventry ...	H	13-13
	20	Fylde ...	A	3-31
	24	Stroud ...	A	30-9
	27	Bristol ...	A	0-4
Oct.	1	Moseley ...	H	9-22
	4	Bedford ...	A	10-18
	8	British Police ...	H	31-6
	11	Harlequins ...	A	24-13
	15	Cheltenham ...	H	40-4
	18	Newport ...	H	17-13
	25	Clifton ...	H	41-0
	29	Pontypool ...	H	12-19
Nov.	1	Leicester ...	A	22-12
	8	Exeter ...	H	75-6
	12	Cambridge Univ.	A	12-32
	15	Plymouth Alb.	A	9-3
	22	London Irish ...	H	7-21
	27	Loughborough	H	16-22
	29	Oxford Univ.	H	22-6
Dec.	6	Moseley ...	A	26-18
	13	Bath ...	H	18-15
	20	Coventry ...	A	15-18
	26	Lydney ...	H	44-7
	27	Newbridge ...	H	29-3

*First XV Fixtures*

1976	1	Nottingham ...	H	17-3
Jan.	3	London Scottish	A	0-20
	10	Leicester ...	H	4-9
	16	Wasps ...	H	16-6
	21	Bristol ...	H	15-15
	24	Army ...	H	38-8
	28	St. Lukes Coll.	H	-
	31	Bridgend ...	A	-
Feb.	14	Bath ...	A	-
	20	Swansea ...	H	-
	28	Aberavon ...	H	-
Mar.	6	Northampton	A	-
	10	Cheltenham ...	A	-
	13	Richmond ...	H	-
	17	Newbridge ...	A	-
	20	Guys Hospital ...	A	-
	24	Abertillery ...	A	-
	27	Saracens ...	H	-
	31	Cardiff ...	A	-
Apr.	7	Newport ...	A	-
	10	Ebbw Vale ...	H	-
	15	Lydney ...	A	-
	17	Headingley ...	H	-
	19	Birkenhead Park	H	-
	24	Torquay Ath.	A	-
May	1	Sale ...	A	-

The First-Aid Service on this ground is provided voluntarily by  
 The City of Gloucester Division, St. John Ambulance Brigade

**ST. LUKES COLLEGE**  
 Blue and Black

- Full Back  
 15. G. Fuller
- Three Quarters  
 14. G. Walters  
 13. J. Cubitt  
 12. S. Donovan  
 11. T. Webb
- Half Backs  
 10. K. Burke  
 9. J. Pickin
- Forwards  
 1. I. Scott  
 2. A. Wolstenholme  
 3. B. Redko  
 4. T. Jones  
 5. K. Garnett  
 6. C. Cooper  
 8. J. Scott (Capt.)  
 7. T. Charles



**WESTGATE motorhouse**

DAIMLER \* JAGUAR \* ROVER \* TRIUMPH

Telephone: 34581





## WARM WELCOME TO THE STUDENTS!

This evening we extend a very warm welcome to those ever popular visitors, St. Luke's College, whose ideology of open and constructive rucker is virtually a guarantee of an entertaining and exciting game.

Last season the Students visited Kingsholm twice, the first occasion being on Wednesday, November 13, 1974, when, on one of their extremely rare home draws, Gloucester beat them in the first round of the Rugby Union club knock-out competition by 21 - 3.

The second appearance here of the College was exactly a year ago, though then January 28 was a Tuesday. It brought a more closely-contested tussle, with the Cherry and Whites emerging victorious by 18 - 9. But whatever the outcome of this evening's encounter we look forward to yet another enjoyable "spectacular"!



## KINGSHOLM KACKLE Confidence

No doubt mindful of the old, but often misleading, maxim that one should not disturb a winning team, the Gloucestershire selectors have named an unchanged side for

the semi-final of the county rugby championship at the Memorial Ground, Bristol, on Saturday, February 7, and we offer congratulations to those of our lads who have retained their places.

As most supporters are fully aware the County will not know their opponents until after the replay next Saturday between Lancashire and Cheshire, who meet to decide the championship of the Northern group. Should this end in a draw, there will, of course, be a few headaches as officials make hurried arrangements for a new semi-final date.

We have to assume at present, however, that the semi-final will be on February 7, and as Gloucester have no match on that day - indeed, there is no game at Kingsholm - most of our own supporters will want to make the journey to Bristol. It is hoped to run a coach, or perhaps two, from Kingsholm and those wishing to book seats should contact Jim Holder or Mervyn Elway in the Social Club as soon as possible.



## Up For T' Cup

Supporters are also reminded that special coaches will be run to Sale on Saturday, February 14, for Gloucester's second round match of the John Player Cup competition against the Cheshire club - in fact, two have already been filled! In addition a coach for club patrons is also filling rapidly and those who have not yet booked seats should contact Cecil Pope or Aleck Lankester.



There will be many more making the journey "under their own steam", as we say, and those who have never previously visited Sale's Brooklands ground may like to know the best route, obviously travelling most of the way by the M5 and M6.

Leave the motorway in Cheshire, preferably at the Knutsford junction and take the old road to Manchester through Altrincham. Shortly after leaving Altrincham watch out for a right hand turn into Marsland Road. Some 400 or 500 yards down this road turn right again into Heywood Road, which is a cul-de-sac, at the end of which is the Sale ground.

A final reminder! As a large contingent of Gloucester supporters will be making the trip a "packed house" could be expected, and those travelling by cars should try and arrive well before kick-off time to make sure of parking spaces.



## Diary Dates

Gloucester travel to South Wales on Saturday to meet Bridgend at the Brewery Field—a particularly tough assignment — but at Kingsholm the free-scoring United have an attractive fixture with Kidderminster. Last week end Jerry Herniman and his lads thrashed Yeovil by 60 — 3 and in this form will provide another free-running exhibition on Saturday.

With the semi-final and the John Player Cup matches intervening Gloucester's next home game will be against Bath on Monday evening, February 16, with the usual 7 p.m. kick-off.

For the avid rugby followers there is the Gloucestershire R.F.U. County Cup semi-final at Berry Hill next Sunday afternoon, (kick-off 2.30 p.m.), when the Forest of Dean side meet St. Mary's Old Boys, the strong Bristol Combination club. The other semi-final, between Gordon League and Matson, is at Hempsted on Sunday, February 22.

Arthur Russell

*FOR ALL YOUR PROPERTY REQUIREMENTS*

## **Roy Long & Partners**

**House, Land and Estate Agents**

22 Worcester Street, Gloucester

Telephone: 0452-35962/3

*PERSONAL SERVICE ASSURED*