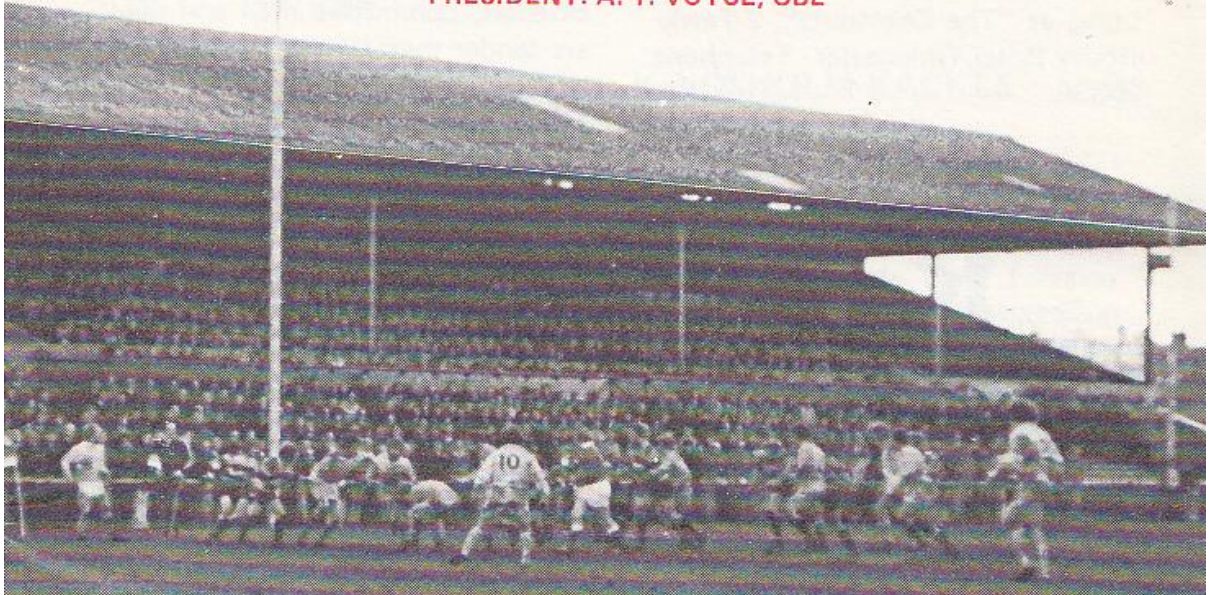




GLOUCESTER RUGBY FOOTBALL CLUB

Founded 1873

PRESIDENT: A. T. VOYCE, OBE



GLOUCESTER

V

BIRKENHEAD PARK

MONDAY, 19th APRIL, 1976

at

KINGSHOLM . GLOUCESTER

Kick-off: 3.00 p.m.

Official Programme—6p



NORMAN P. PARTRIDGE (INSURANCE BROKERS) LTD.

1 BARTON STREET (corner of Clarence Street) GLOUCESTER
Telephone: 32088 and 34920

Free Advice
on all
Insurances

GLOUCESTER

Cherry and White

- Full Back
15. **R. Etheridge** *
- Three Quarters
14. **R. C. Clewes** *
13. **R. Jardine** *
12. **B. J. Vine** *
11. **P. A. Williams**
- Half Backs
10. **D. Pointon** *
9. **W. Birchley**
- Forwards
1. **P. J. Blakeway** *§
2. **F. Reed** *
3. **M. A. Burton (Capt.)** *†
4. **A. Brinn** *†
5. **J. S. Jarrett** *
6. **E. Pinkney** *
8. **M. Potter** *
7. **J. H. Haines** *

Referee: M. Wright (Devon Society)

- † International
§ Under-23 International
* County
|| England Trial

First XV Fixtures

1975			
Sept.	3	Weston-s-Mare	A 37-3
	6	Broughton Pk	A 26-18
	10	S. Wales Police	H 25-10
	13	Coventry ...	H 13-13
	20	Fylde ...	A 3-31
	24	Stroud ...	A 30-9
	27	Bristol ...	A 0-4
Oct.	1	Moseley ...	H 9-22
	4	Bedford ...	A 10-18
	8	British Police	H 31-6
	11	Harlequins ...	A 24-13
	15	Cheltenham ...	H 40-4
	18	Newport ...	H 17-13
	25	Clifton ...	H 41-0
	29	Pontypool ...	H 12-19
Nov.	1	Leicester ...	A 22-12
	8	Exeter ...	H 76-6
	12	Cambridge Univ	A 12-32
	15	Plymouth Alb.	A 9-3
	22	London Irish ...	H 7-21
	27	Loughborough	H 16-22
	29	Oxford Univ.	H 22-6
Dec.	6	Moseley ...	A 26-18
	13	Bath ...	H 18-15
	20	Coventry ...	A 15-18
	26	Lydney ...	H 44-7
	27	Newbridge ...	H 29-3

First XV Fixtures

1976			
Jan.	1	Nottingham ...	H 17-3
	3	London Scottish	A 0-20
	10	Leicester ...	H 4-9
	16	Wasps ...	H 16-6
	21	Bristol ...	H 15-15
	24	Army ...	H 38-8
	28	St. Lukes Coll.	H 23-16
Feb.	7	Exeter ...	H 32-10
	14	Sale ...	A 15-16
	17	Bath ...	H 12-3
	20	Swansea ...	H 33-20
	28	Aberavon ...	H C
Mar.	6	Northampton	A 20-3
	10	Cheltenham ...	A 36-6
	13	Richmond ...	H 18-4
	17	Newbridge ...	A 6-15
	20	Cuvs Hospital	A 52-4
	24	Abertillery ...	A C
	27	Saracens ...	H 11-9
	31	Cardiff ...	A 4-32
Apr.	7	Newport ...	A 7-24
	10	Ebbw Vale ...	H 15-12
	15	Lydney ...	A -
	17	Headingley ...	H -
	19	Birkenhead Park	H -
	24	Torquay Ath.	A -
May	1	Sale ...	A -

The First-Aid Service on this ground is provided voluntarily by
The City of Gloucester Division, St. John Ambulance Brigade

BIRKENHEAD PARK

- Full Back
15. **A. K. Donkoe**
- Three Quarters
14. **G. Lee-Gallon**
13. **M. Jones**
12. **J. B. McKenzie**
11. **B. Elkerton**
- Half Backs
10. **J. Steel**
9. **R. Whalley**
- Forwards
1. **B. Thomas**
2. **R. Kinsley**
3. **G. Staley**
4. **A. Smith**
5. **P. Kyrke-Smith**
6. **M. Bennett**
8. **M. Ryder**
7. **R. G. Haslehurst**



WESTGATE motorhouse

DAIMLER * JAGUAR * ROVER * TRIUMPH

Telephone: 34581





WELCOME TO THE PARK AND FAREWELL TO THE SEASON

The very warm welcome we extend to our Northern friends, Birkenhead Park, on this Easter Monday afternoon must of necessity be tinged with sadness for the fervent Gloucester rucker supporter, for it heralds the last of this season's matches at Kingsholm.

The Park visit Kingsholm once every two years and their last appearance here, on Easter Monday, 15th April, 1974, ended in a resounding victory for the Cherry and Whites by 50 points to 7. Bob Clewes and John Horner each completed a hat-trick of tries, while Dick Smith, Richard Jardine and Phil Winnel all crossed the Park line. Peter Butler must have had one of his rare "off days", for he only made four conversions, though he added two penalty goals.

It is interesting to note that with this victory two years ago Gloucester passed their 1,000 points for that season, a feat they achieved again last Saturday week, when they became the first senior club to top the four-figure mark.

For this final home game we might be excused for loosely quoting Wolsey in Henry VIII: "Farewell to all our greatness" in a season that has again blossomed and borne blushing honours upon our famous club - and to our County, the Champions! With these valedictory notes we wish Birkenhead Park a happy, if brief, stay in our fair city

and look forward to another enjoyable game this afternoon to wind up the home programme.



KINGSHOLM KACKLE The Finale

Gloucester's final two matches entail visits to the seaside and to the industrial north. Next Saturday they travel to Devon to meet Torquay Athletic on the lovely Recreation Ground near the sea front, then conclude their programme with their second visit this season to Sale, against whom they will be seeking retribution for that surprise defeat in the John Player Cup match on the same ground in February.

No doubt some of our really avid supporters will be travelling with the team to Torquay - the lure of the seaside and a sunny Spring day, plus the rugby, might prove too irresistible for them! But for those who prefer shorter journeys there is Gloucester United's final match next Saturday, when they round off another highly successful season under the leadership of Jerry Herniman at the Athletic Ground against Cheltenham United.



Ex-Players' Social

A final reminder to *ALL* former Gloucester players, the old and the not so old, that their special Old Players' social evening will be held in the Social Club next Wednesday week, 28th April. The charge is the very nominal one of 50p and all applications, if not already made, should go to the club secretary, Roy Long, at "The Chestnuts", 2 Tewkesbury Road, Gloucester - Telephone 25335.



Other Announcements

Supporters will appreciate that because of the Easter holidays these notes had to be in the Printers' hands earlier than usual. Any late changes in the teams, of course, and other items of interest will be announced over the loudspeaker system by our worthy newscaster, Jim Hickey, or one of his colleagues.



Valediction

In conclusion Gloucester R.F.C. officials, committee men and players tender their sincere thanks to all of you who have given such tremendous and valued support again throughout the season. They hope you have an enjoyable summer with ideal weather and look forward to seeing you next September. We in turn thank the players who have given so much of their time, energy and skills towards providing such excellent fare yet again.

Arthur Russell



FOR ALL YOUR PROPERTY REQUIREMENTS

Roy Long & Partners

House, Land and Estate Agents

22 Worcester Street, Gloucester

Telephone: 0452-35962/3

PERSONAL SERVICE ASSURED