



OOSTELIKE PRÓVINSIE RUGBY-UNIE  
EASTERN PROVINCE RUGBY UNION

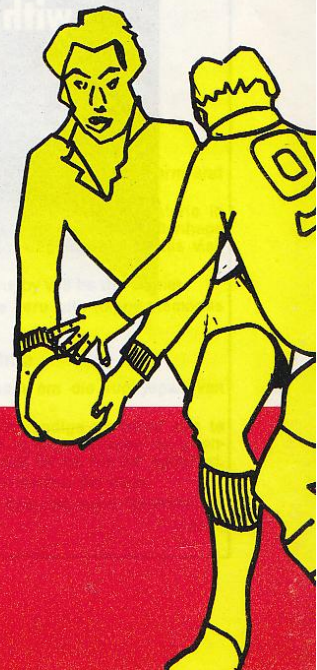
20c

President: Lawton Fourie  
Onder-President/Vice-President: Prof. J. S. Vermaak  
Sekretaris/Secretary: Mev./Mrs M. O'Connell

# Uitenhage/Despatch XV

teen/versus

# Gloucestershire XV



CENTRAL GROUND  
SENTRALE VELD **UITENHAGE**

1976-06-02

Down a Lion...  
feel satisfied!

**LION**

15h30

**UITENHAGE/DESPATCH XV**

15  
**M. Kilian**  
(Swifts)

13  
**P. Zemke**  
(Oud-Collegians)

11  
**N. Benade**  
(Swifts)

12  
**D. Mostert**  
(Oud-Collegians)

14  
**R. O'Moore**  
(Despatch)

10  
**K. Erasmus**  
(Oud-Collegians)

9  
**R. Zemke**  
(Despatch — O.-Kaptein)

1  
**S. Creighton**  
(Oud-Collegians)

2  
**S. Cloete**  
(Swifts — Kaptein)

3  
**R. Allen**  
(Swifts)

6  
**F. Rens**  
(Swifts)

4  
**B. de Lange**  
(Swifts)

5  
**L. Swanepoel**  
(Oud-Collegians)

7  
**G. van Rensburg**  
(Despatch)

8  
**J. Botha**  
(Despatch)

Skeidsregter/Refere

SPENT YOUR ENERGY  
ON THE  
SPORTSFIELD?

THEN  
**CHEC**



# LAGER

# Biermanskap... Leeuplesier!

15h30

## GLOUCESTERSHIRE XV

(WHITE)

Team to be selected from the following players/Span sal uit die volgende spelers gekies word:

1 <b>B. G. Nelmes</b> Prop	17 <b>F. C. Reed</b> Hooker	19 <b>A. Brinn</b> Lock
2 <b>J. V. Pullin</b> Hooker (Vice-Captain)	10 <b>C. G. Williams</b> Fly-half	20 <b>J. H. Haines</b> Flanker
3 <b>M. A. Burton</b> Prop	11 <b>A. J. G. Morley</b> Wing	21 <b>D. P. Sorrell</b> Fly-half and centre
4 <b>J. H. Fidler</b> Lock	12 <b>C. J. Williams</b> Centre	22 <b>R. R. Mogg</b> Centre and wing
5 <b>R. A. Powell</b> Lock	13 <b>J. A. Bayliss</b> Centre (Captain)	23 <b>B. J. Vine</b> Centre
6 <b>J. A. Watkins</b> Flanker	14 <b>R. J. Clewes</b> Wing	24 <b>R. Jardine</b> Centre and wing
7 <b>M. Rafter</b> Flanker	15 <b>P. E. Butler</b> Fullback	25 <b>R. Harding</b> Scrumhalf
8 <b>D. M. Rollitt</b> No. 8	16 <b>G. A. F. Sargeant</b> Lock	
9 <b>P. Kingston</b> Scrumhalf	18 <b>A. H. Troughton</b> Lock	

DR. J. MOOLMAN

SHOP

# CKERS

IT WILL COST YOU LESS  
TO REPLENISH  
YOUR RESOURCES

9

## HISTORY OF GLOUCESTERSHIRE R.F.U.

The following is a short history of the Gloucestershire Rugby Football Union, which undertake a tour of S.A. this year:

Founded in 1878 and entered the R.F.U.'s County Championship in 1890/91.

Beat Middlesex 24—9 a few weeks ago in the final of the English County Championship and thereby became the champions for the third successive time. Gloucestershire has played in the

5

last seven finals, which is an all-time record in England. Have won the English County Championship 13 times already, after playing in the finals 22 times and in the semi-finals 30 times.

**Players:** In its long history Gloucestershire has produced many International players for England, Scotland and Wales, as well as several members of British Lions' teams. Nine Union members were in the England team in Australia in 1975. For the S.A. tour, there are the following International players:

**British Lions (3):** J. V. Pullin, M. A. Burton and A. J. G. Morley.

**England Senior (10):** The above three, plus the following seven: P. E. Butler, C. G. Williams, P. Kingston, B. G. Nelmes, A. Brinn, J. A. Watkins, D. M. Rollitt.

**England Under 23:** R. M. Harding, M. Rafter.

## **ITINERARY FOR GLOUCESTERSHIRE R.F.U.**

Saturday, 29th May

VERSUS RHODESIA

Monday, 31st May

VERSUS NORTH EASTERN CAPE

Wednesday, 2nd June

VERSUS UITENHAGE/DESPATCH XV

Saturday, 5th June

VERSUS SOUTH WESTERN DISTRICTS

Wednesday, 9th June

VERSUS NORTHERN TRANSVAAL

Saturday, 12th June

VERSUS TRANSVAAL

Wednesday, 16th June

VERSUS SOUTH WEST AFRICA



**Message from His Worship the Mayor of Uitenhage  
Councillor A. D. Schoeman**

I would like to convey to the Gloucestershire team, the greetings and good wishes of the Town Council and of the Sportsmen of Uitenhage.

Uitenhage is seldom the venue for a game against an overseas team and we are fully appreciative of our good fortune.

A hearty welcome and a most enjoyable afternoon of rugby to our visitors as well as the combined team of Uitenhage and Despatch.

**Welwillendheidsboodskap deur Sy Edelagbare die Burgemeester van  
Uitenhage, Raadslid A. D. Schoeman**

Graag dra ek oor aan die span van Gloucestershire die groete en goeie wense van die Stadsraad en van die Sportmanne van Uitenhage.

Dit gebeur selde dat wedstryde teen 'n oorsese span op Uitenhage gespeel word, en ons is uiters dankbaar vir die groot geleentheid wat ons te beurt geval het.

Ons heet ons besoekers asook die gekombineerde span van Uitenhage en Despatch hartlik welkom, en wens u 'n aangename namiddag van rugby toe.



**Message from Lawton Fourie, President E.P. Rugby Union**

On behalf of the Eastern Province Rugby Union I am pleased to extend a warm and hearty welcome to the Gloucestershire touring team.

It is an honour and privilege for any Union to stage this historic match. Historic in this respect that it is the first occasion that an overseas side will be playing at Uitenhage and all rugby enthusiasts in the Eastern Province have been looking forward to this visit for a long time.

We are looking forward to an enjoyable game and trust that rugby will be the winner.

We hope that you will enjoy your stay with us and will leave here with happy memories of our city and its people.

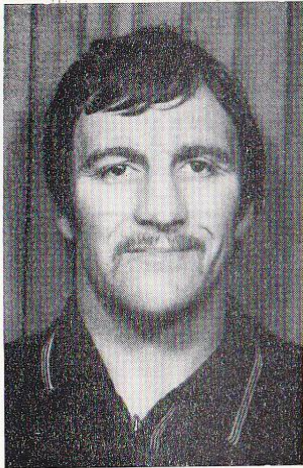
**Boodskap van Lawton Fourie, President O.P. Rugby-Unie**

Namens die O.P. Rugby-Unie is dit vir my baie aangenaam om die rugbyspan van Gloucestershire baie hartlik te verwelkom.

Dit is vir my Unie 'n besondere voorreg om hierdie geskiedkundige wedstryd aan te bied. Geskiedkundig in dié opsig dat dit die eerste keer is dat 'n oorsese span op Uitenhage sal speel en alle rugbygeesdriftiges in die O.P. sien al lankal uit na hierdie wedstryd.

Ons kyk uit na 'n genotvolle wedstryd en vertrou dat rugby die wenner sal wees.

Ons hoop dat u die verblyf hier by ons sal geniet en dat u ons met soete herinneringe van ons stad en sy mense sal verlaat.



J. A. BAYLISS  
Centre (Captain)



J. S. MARSH  
Tour Manager



D. J. WALTER  
Assistant Tour Manager

**WOULD YOU LIKE TO BECOME A REFEREE?**



If you would, phone the Secretary, E.P. Rugby Referees Society  
for advice and guidance — Tel.: Home 33-2753, Work 2-5155





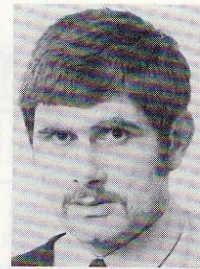
**B. G. NELMES**  
Prop



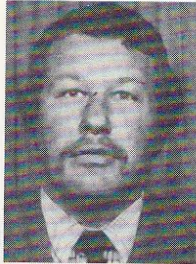
**J. V. PULLIN**  
Hooker (v/c)



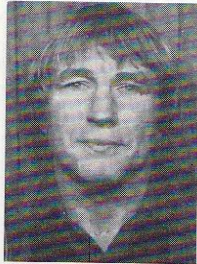
**M. A. BURTON**  
Prop



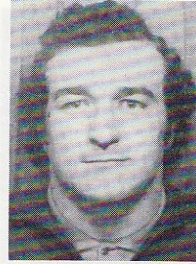
**J. H. FIDLER**  
Lock



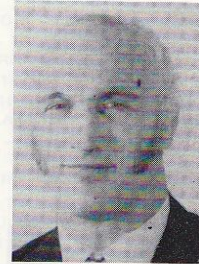
**R. A. POWELL**  
Lock



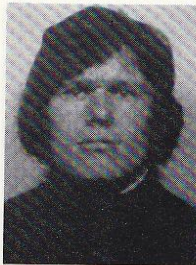
**J. A. WATKINS**  
Flanker



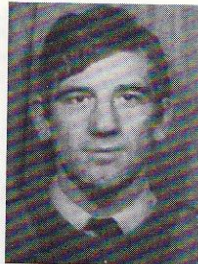
**M. RAFTER**  
Flanker



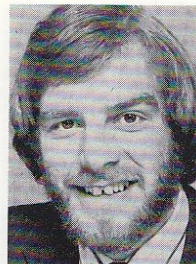
**D. M. ROLLITT**  
No. 8



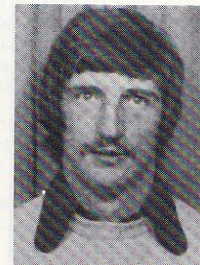
**P. KINGSTON**  
Scrumhalf



**C. G. WILLIAMS**  
Fly-half

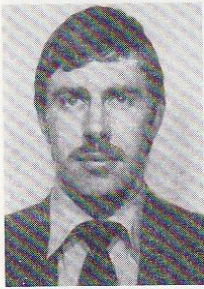


**A. J. G. MORLEY**  
Wing

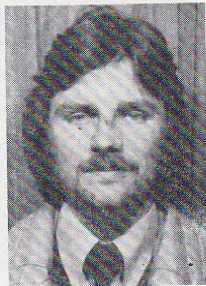


**C. J. WILLIAMS**  
Centre

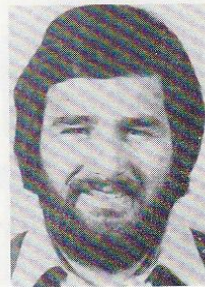




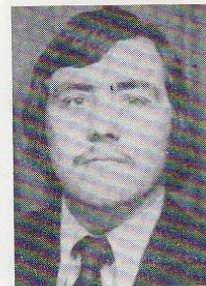
R. J. CLEWES  
Wing



P. E. BUTLER  
Fullback



G. A. F. SARGENT  
Lock



F. C. REED  
Hooker



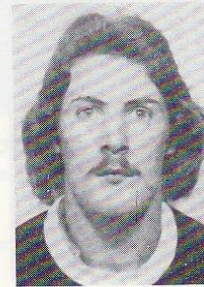
A. H. TROUGHTON  
Lock



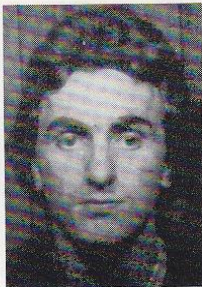
A. BRINN  
Lock



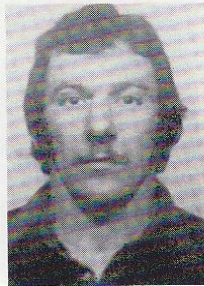
J. H. HAINES  
Flanker



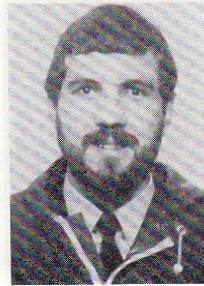
D. P. SORRELL  
Fly-half and Centre



R. R. MOGG  
Centre and Wing



B. J. VINE  
Centre



R. JARDINE  
Centre and Wing



R. HARDING  
Scrumhalf