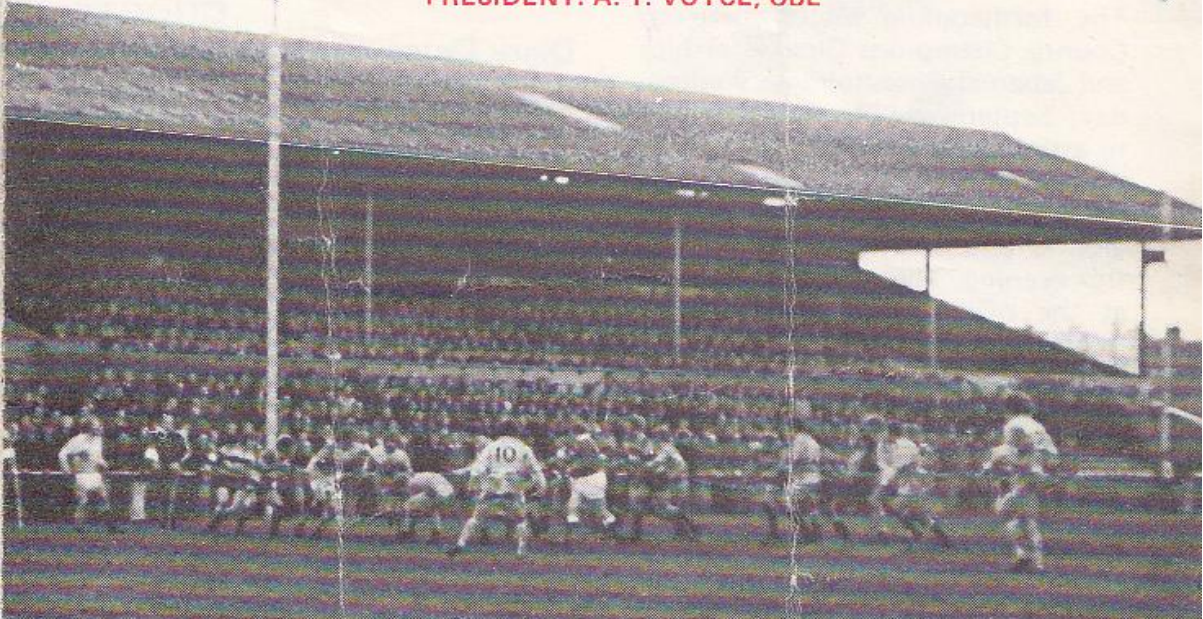




GLOUCESTER RUGBY FOOTBALL CLUB

Founded 1873

PRESIDENT: A. T. VOYCE, OBE



GLOUCESTER

V

STROUD

WEDNESDAY, 8th SEPTEMBER, 1976

at

KINGSHOLM . GLOUCESTER

Kick-off: 7.00 p.m.

Official Programme—6p

GLOUCESTER

Cherry and White

- Full Back
15. **P. Butler** *†
- Three Quarters
14. **P. Williams** *
13. **R. Mogg** *
12. **B. Vine** *
11. **R. Clewes** *
- Half Backs
10. **C. Williams** *†
9. **P. Kingston** *†
- Forwards
1. **G. Sargent** *
2. **F. Reed** *
3. **M. Burton** *†
4. **J. Fidler** *
5. **S. Boyle** *
6. **J. Watkins (Capt.)** *†
8. **J. Simonet** *
7. **E. Pinkney** *

SUBSTITUTES

J. Gribble
W. Birchley
R. Correia
S. Mills

Referee: P. MALLELIEU (Oxford Society)

† International

‡ Under-23 International

* County

|| England Trial

First XV Fixtures

1976
Sept. 4 (S) Broughton Pk. H 31- 6
8 (W) Stroud ... H -
11 (S) Coventry ... A -
15 (W) Newbridge ... H -
18 (S) Waterloo ... H -
25 (S) Bristol ... H -
29 (W) Cheltenham A -

Oct. 2 (S) Bedford ... H -
6 (W) Ebbw Vale ... A -
9 (S) Harlequins ... H -
13 (W) Pontypool ... A -
16 (S) Newport ... A -
22 (F) Clifton ... H -
27 (W)S. Wales Police H -
30 (S) Oxford Univ. A -

Nov. 3 (W) Bridgend ... H -
6 (S) Leicester ... H -
10 (W) Cambridge Univ H -
13 (S) Stroud ... A -
20 (S) Aberavon ... H -
27 (S) London Irish A -

Dec. 4 (S) Moseley ... H -
11 (S) Bath ... A -
18 (S) Coventry ... H -
26 Lydney ... H -
(Boxing Day)

First XV Fixtures

1977
Jan. 1 (S) London Scott. H -
8 (S) Leicester ... A -
15 (S) Wasps ... A -
19 (W) Army ... H -
22 (S) Moseley ... A -
26 (W) St. Lukes Coll. H -
29 (S) Loughborough H -

Feb. 4 (F) Bristol ... A -
12 (S) Bath ... H -
18 (F) Swansea ... A -
26 (S) Aberavon ... A -

Mar. 2 (W) Newport ... H -
5 (S) Northampton H -
9 (W) Cheltenham H -
12 (S) Richmond ... A -
16 (W) Abertillery ... H -
19 (S) Guys Hospital H -
26 (S) Saracens ... A -
30 (S) Newbridge ... A -

Apr. 2 (S) Cardiff ... H -
7 (T) Lydney ... A -
9 (S) New Brighton H -
(Easter Saturday)
11 (M) Fylde ... H -
(Easter Monday)
16 (S) Sale ... H -
19 (T) Nottingham A -
23 (S) Exeter ... A -
30 (S) Plymouth ... H -

STROUD

Blue and White

- Full Back
15. **R. Wicks**
- Three Quarters
14. **S. Bird**
13. **M. Tierney**
12. **A. Neild**
11. **I. Witts**
- Half Backs
10. **D. Vaughan**
9. **B. Taylor**
- Forwards
1. **R. Allen**
2. **G. Trott**
3. **M. Finch**
4. **P. Williams**
5. **J. Garrett**
6. **S. Price**
8. **J. Williams (Capt.)**
7. **C. Finch**

SUBSTITUTES

D. Owen
P. Curtiss

The First-Aid Service on this ground is provided voluntarily by
The City of Gloucester Division, St. John Ambulance Brigade



CORDIAL WELCOME TO STROUD

Amiens, in his little song from *As You Like It*, was perhaps a trifle satirical when he spoke of most friendship being feigning. This is certainly far from the truth when we speak of our very good friends and neighbours, Stroud, to whom we extend a special welcome to Kingsholm this evening.

But Charles, in the same play, referred to young men in the Forest of Arden "fleeing the time carelessly"; which may be somewhat more appropriate, for it is two years since the Cherry and Whites last met Stroud at Kingsholm, on Wednesday, September 11, 1974, when it was only after a hard tussle that they ran out winners by 17 - 9.

Last season, at Fromehall Park, on September 24, Gloucester eventually cast aside earlier inhibitions to win convincingly enough by 30 - 9 in another entertaining tussle.

Stroud began the new season with a clear-cut away win over Bridgwater and Albion by 22 - 13 after giving a splendid second half display. It was a highly encouraging start for our neighbours and we look forward to an enjoyable game this evening.



KINGSHOLM KACKLE

Excellent Start

Congratulations to the lads on their resounding victory over Broughton Park in the opening match last Saturday, and particularly to Peter Butler for his major role in the success. It was certainly an excellent start to the season for our new skipper, John Watkins.



Anyone for 'Cov'?

Next Saturday brings one of the toughest assignments of the season for the lads when they travel to meet formidable Coventry at Coundon Road. Any team needs all the encouragement it can get for such a match and it is intended to run a coach for supporters if there is sufficient demand. No doubt there will be many travelling by car, but all those wishing to book seats on the coach are asked to contact Jim Holder in the Social Club after this evening's match.



'300 Club'

It is hardly necessary to mention the immense success of what began

as the *200 Club* a few years ago, but which has now become so popular that many supporters had to be turned down last season. This competition has inevitably grown to be the *300 Club*, but already the applications have been pouring in. Those who wish to join this season should contact Alec Lankester or one of the committee as soon as possible.

The forthcoming match between County Champions Gloucestershire and Japan at Kingsholm on Wednesday, September 22, seems certain to attract a 'full house'. Early applications for tickets, therefore, should be made, and these, at least for ground and enclosure, are on sale this evening. They may be obtained at the office before or after the match, or from Roy Long, the club secretary, at 22 Worcester Street, Gloucester, during the day. It is expected that stand tickets will also be available in the next day or so.



Diary Dates

Because of the hard ground following the drought Cinderford were forced to cancel their game with Gloucester United on Monday evening. But Jim Jarrett and his lads are at Kingsholm next Saturday when they take on powerful Coventry Extra 1st (kick-off 3.00).

The senior side return to Kingsholm next Wednesday, September 15, when they meet Newbridge with the usual 7.00 p.m. kick-off.

Arthur Russell

FOR ALL YOUR PROPERTY REQUIREMENTS

Roy Long & Partners

House, Land and Estate Agents

22 Worcester Street, Gloucester

Telephone: 0452-35962/3

PERSONAL SERVICE ASSURED