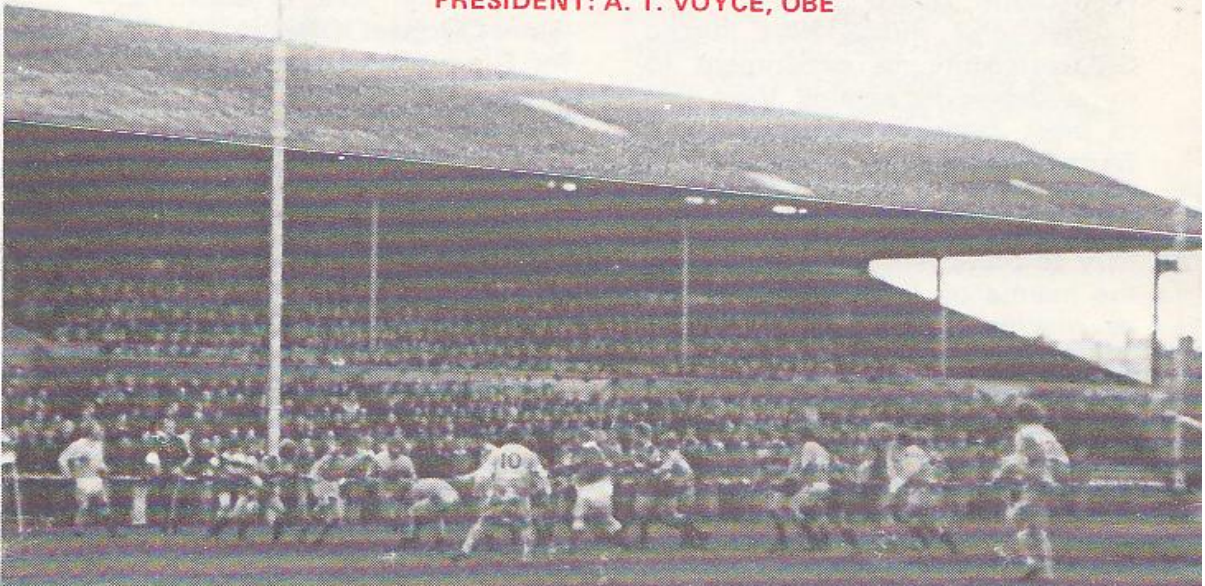




GLOUCESTER RUGBY FOOTBALL CLUB

Founded 1873

PRESIDENT: A. T. VOYCE, OBE



GLOUCESTER

V

NEWBRIDGE

WEDNESDAY, 15th SEPTEMBER, 1976

at

KINGSHOLM . GLOUCESTER

Kick-off: 7.00 p.m.

Official Programme—6p



NORMAN P. PARTRIDGE (INSURANCE BROKERS) LTD.
 1 BARTON STREET (corner of Clarence Street) GLOUCESTER
 Telephone: 32088 and 34920

Free Advice
 on all
 Insurances

GLOUCESTER
 Cherry and White

- Full Back
 15. **P. E. Butler** *†
- Three Quarters
 14. **R. J. Clewes** *
 13. **S. P. Clewes** *
 12. **B. J. Vine** *
 11. **R. R. Mogg** *
- Half Backs
 10. **C. G. Williams (Capt.)** *†
 9. **P. Kingston** *†
- Forwards
 1. **K. Richardson** *
 2. **S. G. F. Mills** *
 3. **M. A. Burton** *†
 4. **S. B. Boyle** *
 5. **J. H. Fidler** *
 6. **J. Gribble** *
 8. **J. Simonet** *
 7. **E. A. Pinkney** *
- REPLACEMENTS
 R. Corriea *
 F. C. Reed *
 G. A. F. Sargent *
 R. Jardine *

Referee: **K. BABER (Bristol Society)**

- † International
 § Under-23 International
 * County
 || England Trial

First XV Fixtures

1976

| | | |
|-------------------------------|---|-------|
| Sept. 4 (S) Broughton Pk. ... | H | 31-6 |
| 8 (W) Stroud ... | H | 23-3 |
| 11 (S) Coventry ... | A | 12-11 |
| 15 (W) Newbridge ... | H | - |
| 18 (S) Waterloo ... | H | - |
| 25 (S) Bristol ... | H | - |
| 29 (W) Cheltenham ... | A | - |
| Oct. 2 (S) Bedford ... | H | - |
| 6 (W) Ebbw Vale ... | A | - |
| 9 (S) Harlequins ... | H | - |
| 13 (W) Pontypool ... | A | - |
| 16 (S) Newport ... | A | - |
| 22 (F) Clifton ... | H | - |
| 27 (W) S. Wales Police ... | H | - |
| 30 (S) Oxford Univ. ... | A | - |
| Nov. 3 (W) Bridgend ... | H | - |
| 6 (S) Leicester ... | H | - |
| 10 (W) Cambridge Univ ... | H | - |
| 13 (S) Stroud ... | A | - |
| 20 (S) Aberavon ... | H | - |
| 27 (S) London Irish ... | A | - |
| Dec. 4 (S) Moseley ... | H | - |
| 11 (S) Bath ... | A | - |
| 18 (S) Coventry ... | H | - |
| 26 (S) Lydney ... | H | - |

(Boxing Day)

First XV Fixtures

1977

| | | |
|-----------------------------|---|---|
| Jan. 1 (S) London Scott ... | H | - |
| 8 (S) Leicester ... | A | - |
| 15 (S) Wasps ... | A | - |
| 19 (W) Army ... | H | - |
| 22 (S) Moseley ... | A | - |
| 26 (W) St. Lukes Coll. ... | H | - |
| 29 (S) Loughborough ... | H | - |
| Feb. 4 (F) Bristol ... | A | - |
| 12 (S) Bath ... | H | - |
| 18 (F) Swansea ... | A | - |
| 26 (S) Aberavon ... | A | - |
| Mar. 2 (W) Newport ... | H | - |
| 5 (S) Northampton ... | H | - |
| 9 (W) Cheltenham ... | H | - |
| 12 (S) Richmond ... | A | - |
| 16 (W) Abertillery ... | H | - |
| 19 (S) Guys Hospital ... | H | - |
| 26 (S) Saracens ... | A | - |
| 30 (S) Newbridge ... | A | - |
| Apr. 2 (S) Cardiff ... | H | - |
| 7 (T) Lydney ... | A | - |
| 9 (S) New Brighton ... | H | - |
| (Easter Saturday) | | |
| 11 (M) Fylde ... | H | - |
| (Easter Monday) | | |
| 16 (S) Sale ... | H | - |
| 19 (T) Nottingham ... | A | - |
| 23 (S) Exeter ... | A | - |
| 30 (S) Plymouth ... | H | - |

The First-Aid Service on this ground is provided voluntarily by
 The City of Gloucester Division, St. John Ambulance Brigade

NEWBRIDGE
 Blue and Black

- Full Back
 15. **B. Hawkins**
- Three Quarters
 14. **A. Browning**
 13. **R. Edwards**
 12. **J. Young**
 11. **F. Hardacre**
- Half Backs
 10. **H. Evans (Capt.)**
 9. **C. Jousse**
- Forwards
 1. **T. Bates**
 2. **J. Stokes**
 3. **J. McCreedy**
 4. **D. Hughes**
 5. **C. Williams**
 6. **R. Hill**
 8. **J. McGuire**
 7. **P. Jones**
- REPLACEMENTS
 B. Falkener
 P. Edwards



WESTGATE motorhouse

DAIMLER * JAGUAR * ROVER * TRIUMPH

Telephone: 34581





CORDIAL WELCOME TO THE "BRIDGE"

This evening we extend a particularly cordial welcome to Newbridge, our old friends and rivals from Gwent, who are the first visitors to Kingsholm this season from 'over the bridge'.

Although they have lost two of their first three matches Newbridge have started the new campaign in free-scoring style, having already notched 49 points. Last Saturday they travelled to the Brewery Field where Bridgend were made to pull out all the proverbial stops to win through by 16-10.

Last season, on December 27, 1975, the Cherry and Whites gained a convincing victory over the 'Bridge' at Kingsholm, but in the return mid-week game at Newbridge, lost by 15-6.

We look forward to another entertaining game with our Gwent friends this evening and trust they will enjoy their brief visit.



KINGSHOLM KACKLE

Great Win

Despite some of those newspaper reporters who appear to think that a huge chip on each shoulder makes them balanced, and almost weep in their beer when Gloucester beat their favourites, the win over Coventry last weekend was a magnificent achievement. Few clubs, English or Welsh, visit Coundon Road and leave victorious, and to complete a praiseworthy club double let us not forget the equally fine performance of Jim Jarrett and the United lads in accounting for a formidable Coventry Extra 1st XV at Kingsholm!



Injured on the Mend

It was a bitter blow to lose our skipper and brilliant flanker, John Watkins, so early in the season with damaged ribs sustained in the local 'derby' with Stroud last Wednesday. But his injuries, fortunately, were not as serious as was at first thought and John will be tearing into the opposition again shortly.

There is better news, too, of our other flanker, John Haines, who was not expected to be in action until next month. But the damaged ligaments in his knee have responded well to treatment and he is hoping to start training again this week. Similarly, Phil Winnel, who has been suffering from ankle injuries, also expects to be fit sooner than he originally thought.



Well Done, Steve

Injuries and illness have forced Gloucestershire to experiment to some degree in naming their side to meet Japan at Kingsholm next Wednesday evening. Congratulations to the ten Gloucester lads who have been honoured by selection, particularly to Steve Mills, who takes over the mantle of John Pullin and will be making his County debut. We wish him and all his colleagues every success against the Tourists.



Quiz Winners

The three winners in the Rugby quiz competitions in the *Citizen* were (1) J. C. Hopcroft, of 22 Lea Crescent, Longlevens; (2) C. Hartland, of 61 Granville Street; (3) N. T. Coote, of 7 Lea Crescent Longlevens. It seems there are some very keen and knowledgeable rugby followers in Lea Crescent. Each winner receives a free season ticket for Gloucester's home matches.

Congratulations!



Diary Date

Next Saturday the visitors to Kingsholm will be Waterloo, the strong North Country club, with the usual kick-off at 3.00 p.m.

Arthur Russell

FOR ALL YOUR PROPERTY REQUIREMENTS

Roy Long & Partners

House, Land and Estate Agents

22 Worcester Street, Gloucester

Telephone: 0452-35962/3

PERSONAL SERVICE ASSURED