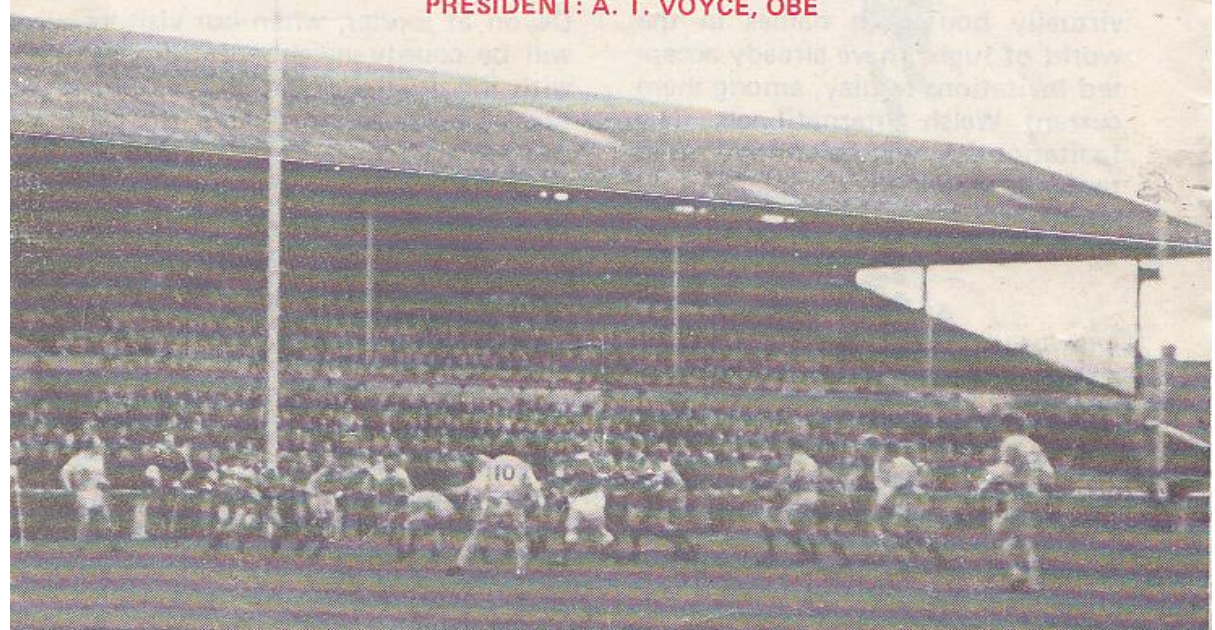


236



GLOUCESTER RUGBY FOOTBALL CLUB
Founded 1873
PRESIDENT: A. T. VOYCE, OBE



GLOUCESTER

V

HARLEQUINS

SATURDAY, 9th OCTOBER, 1976

at

KINGSHOLM . GLOUCESTER

Kick-off: 3.00 p.m.

Official Programme—6p



NORMAN P. PARTRIDGE (INSURANCE BROKERS) LTD.
 1 BARTON STREET (corner of Clarence Street) GLOUCESTER
 Telephone: 32088 and 34920

Free Advice
 on all
 Insurances

GLOUCESTER

Cherry and White

- Full Back
 15. **R. Correia**
- Three Quarters
 14. **R. Clewes** *
 13. **S. Clewes**
 12. **R. Moody**
 11. **P. Williams**
- Half Backs
 10. **D. Poignton**
 9. **W. Birchley**
- Forwards
 1. **K. Richardson (Capt.)** *||
 2. **F. Reed** *
 3. **P. Blakeway** M. CURRAN *S
 4. **J. Orwin**
 5. **P. Winnell**
 6. **E. Pinkney** *
 8. **J. Simonet**
 7. **M. Hayes**

REPLACEMENTS

P. Hiam D. SMITH
 J. Cooke

Referee: O. E. DOYLE (Irish Society)

- † International
 § Under-23 International
 * County
 || England Trial

First XV Fixtures

1976			
Sept.	4 (S) Broughton Pk.	H	31- 6
	8 (W) Stroud	...	H 23- 3
	11 (S) Coventry	...	A 12-11
	15 (W) Newbridge	...	H 18-13
	18 (S) Waterloo	...	H 14-10
	25 (S) Bristol	...	H 6- 9
	29 (W) Cheltenham	A	62- 7
Oct.			
	2 (S) Bedford	...	H 35-14
	6 (W) Ebbw Vale	A	4-22
	9 (S) Harlequins	...	H -
	13 (W) Pontypool	...	A -
	16 (S) Newport	...	A -
	22 (F) Clifton	...	H -
	27 (W)S. Wales Police	H	-
	30 (S) Oxford Univ.	A	-
Nov.			
	3 (W) Bridgend	...	H -
	6 (S) Leicester	...	H -
	10 (W) Cambridge Univ	H	-
	13 (S) Stroud	...	A -
	20 (S) Aberavon	...	H -
	27 (S) London Irish	A	-
Dec.			
	4 (S) Moseley	...	H -
	11 (S) Bath	...	A -
	18 (S) Coventry	...	H -
	26 Lydney	...	H -
	(Boxing Day)		

First XV Fixtures

1977			
Jan.	1 (S) London Scott.	H	-
	8 (S) Leicester	...	A -
	15 (S) Wasps	...	A -
	19 (W) Army	...	H -
	22 (S) Moseley	...	A -
	26 (W) St. Lukes Coll.	H	-
	29 (S) Loughborough	H	-
Feb.			
	4 (F) Bristol	...	A -
	12 (S) Bath	...	H -
	18 (F) Swansea	...	A -
	26 (S) Aberavon	...	H -
Mar.			
	2 (W) Newport	...	H -
	5 (S) Northampton	H	-
	9 (W) Cheltenham	H	-
	12 (S) Richmond	...	A -
	16 (W) Abertillery	...	H -
	19 (S) Guys Hospital	H	-
	26 (S) Saracens	...	A -
	30 (S) Newbridge	...	A -
Apr.			
	2 (S) Cardiff	...	H -
	7 (T) Lydney	...	A -
	9 (S) New Brighton	H	-
	(Easter Saturday)		
	11 (M) Fyde	...	H -
	(Easter Monday)		
	16 (S) Sale	...	H -
	19 (T) Nottingham	A	-
	23 (S) Exeter	...	A -
	30 (S) Plymouth	...	H -

HARLEQUINS

Light Blue, Magenta, Chocolate, French
 Grey, Light Green and Black

- Full Back
 15. **K. Bushell** M. NICHOLS
- Three Quarters
 14. **C. Lambert**
 13. **D. Cooke** †
 12. **D. Grant** R. DENT
 11. **K. Jenkins**
- Half Backs
 10. **A. Wordsworth** †
 9. **P. Rawle**
- Forwards
 1. **J. Whipp**
 2. **T. Venebles**
 3. **M. Claxton**
 4. **N. Martin (Capt.)** †
 5. **C. Barrett**
 6. **N. Davis**
 8. **A. Alexander**
 7. **N. French**

REPLACEMENTS

H. Burtow

The First-Aid Service on this ground is provided voluntarily by
 The City of Gloucester Division, St. John Ambulance Brigade



WESTGATE motorhouse

DAIMLER * JAGUAR * ROVER * TRIUMPH

Telephone: 34581





WELCOME TO THE 'QUINS

We glean from our dictionaries that in English pantomime Harlequins are mute characters supposedly invisible to clowns and pantaloons. They are also a small breed of spotted dog and a northern species of duck as lesser-known meanings.

But we in the world of rugby know only too well that there is nothing burlesque, ludicrous, canine nor duck-like about the famous Harlequins, whom we cordially welcome to Kingsholm this afternoon, though they might, with their spectacular style of open play, almost appear invisible on occasions.

The 'Quins, unfortunately, normally meet Gloucester only once each season on an alternate home and away basis, though this year there will be a double confrontation, for they have been drawn together in the first round of the John Player Cup, at Twickenham on Saturday, December 4.

Last season, on October 11, the Cherry and Whites produced one of their finest performances to win at Twickenham by 24-13, while on the last visit of 'Quins to Kingsholm there was another splendid win for Gloucester on October 12 by 30-10. Harlequins, then, may well be bearing in mind the thoughts of Hamlet about all occasions . . . spurring his dull revenge.

Our friends have already gained several outstanding victories this season and we look forward to another entertaining and exciting game with them this afternoon!



KINGSHOLM KACKLE

County Clash

Down the motorway there is another important clash this afternoon as Gloucestershire start the defence of their country championship title against those tough, rugged opponents, Cornwall. Injuries, illness and unavailability have left several familiar figures missing from the County ranks, but we all wish them well in the formidable task facing them at the Memorial Ground, particularly the ten Gloucester lads who will be on duty there. We hope to get news of the County's progress throughout the afternoon.



Special Diary Date

Official announcements have not yet been made, but a "big match special" has been arranged at Kingsholm on Sunday, November 14,

when a Gloucester XV take on an all-star side comprised almost entirely of internationals. The match is in aid of funds for Gloucester's tour to Colorado early next summer and not only will our thousands of supporters be able to contribute to the funds, they will have the opportunity to see famous stars in action.

Many players, whose names are virtually household names in the world of rugby, have already accepted invitations to play, among them current Welsh internationals. The Invitation XV will be announced as soon as the full complement is known.



International Tickets

Supporters are reminded that this is their last chance to apply for international tickets. Applications should be made as soon as possible to the Gloucester R.F.C. secretary, Roy Long.

Diary Dates

Gloucester's next two matches bring journey's "over the bridge". Next Wednesday they travel to meet Pontypool, with an evening kick-off then next Saturday face powerful Newport at Rodney Parade.

The next home match is on *Friday* evening, October 22, the day prior to Gloucestershire's match with Devon at Exeter, when our visitors will be county neighbours Clifton, with the usual kick-off at 7.00 p.m.

Arthur Russell



FOR ALL YOUR PROPERTY REQUIREMENTS

Roy Long & Partners

House, Land and Estate Agents

22 Worcester Street, Gloucester

Telephone: 0452-35962/3

PERSONAL SERVICE ASSURED